

Test Valley Borough Council Public Open Space Audit

Annex 1

Impact of Parish Boundary Change on
Public Open Space Provision

May 2019

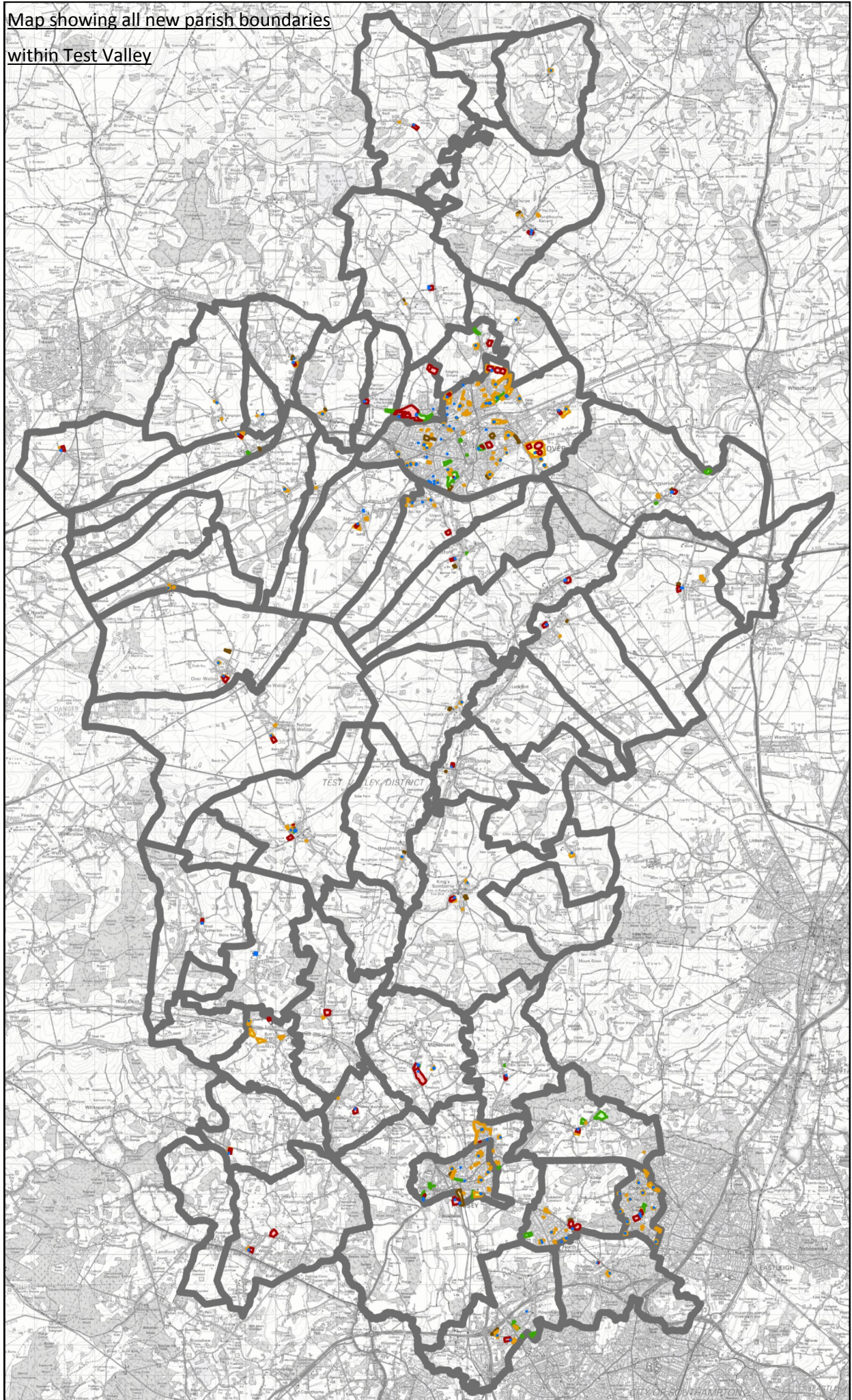
Parish Boundary Changes

The Community Governance Review (CGR) was carried out after the Local Government Boundary Commission for England (LGBCE) published its final recommendations for Test Valley Borough Council's new electoral arrangements in October 2017. The changes to the ward boundaries made by the LGBCE resulted in a number of anomalies between borough ward boundaries and parish boundaries. As a result, a community governance review was carried out in order to reduce any anomalies and sought to ensure that community governance across the Borough reflects the identities and interests of the community in that area and that governance is effective and convenient. Two rounds of consultation were carried out and the final recommendations were considered by full Council in September 2018 and adopted, with the changes taking effect on 1 April 2019.

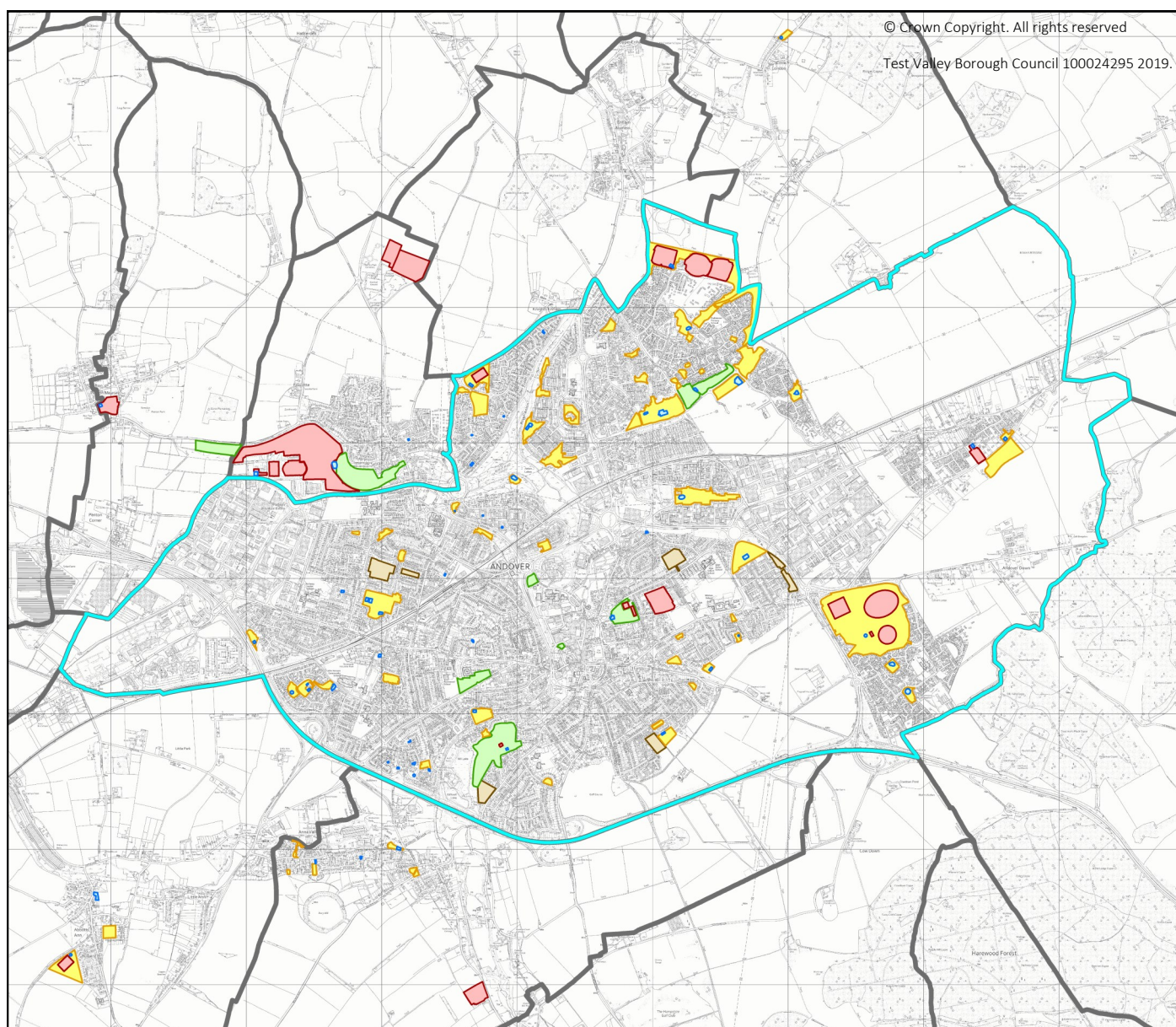
Impact on the Test Valley Public Open Space Audit 2018

This Annex will show where the Parish Boundary Changes have altered the finding of the 2018 Public Open Space Audit; not all of the boundary changes affected public open space provision within the Borough; therefore provision within the 2018 document remains unchanged for all remaining Parishes.

Map showing all new parish boundaries
within Test Valley



Andover

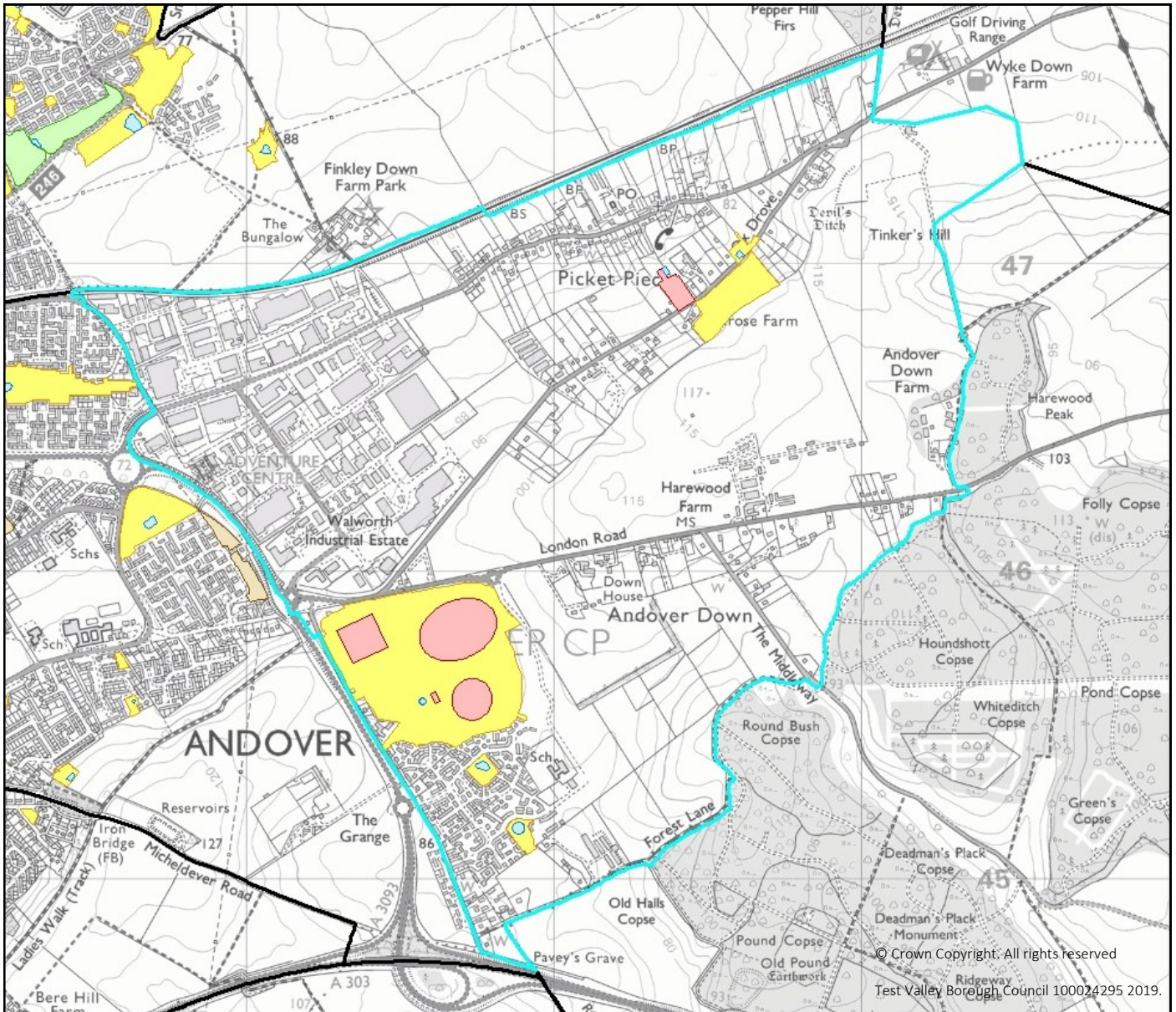


Public Open Space provision after Parish boundary changes

Public Open Space	Provision (Ha)	Requirement (Ha)	Balance (+/-)
Outdoor Sports Facilities	46.57*	49.95	-3.38
Parks and Gardens	22.83	19.98	2.85
Informal Recreation Areas	67.34	39.96	27.38
Provision for Children and Teenagers	2.49	29.97	-27.48
Allotments	7.71	9.99	-2.28
Total	146.94	149.85	-2.91

*Note: this figure includes 5.34Ha Foxcotte and 19.79 Ha Charlton Sport and Leisure Centre Sports Ground provisions as they serve the larger Andover area.

Andover: Downlands



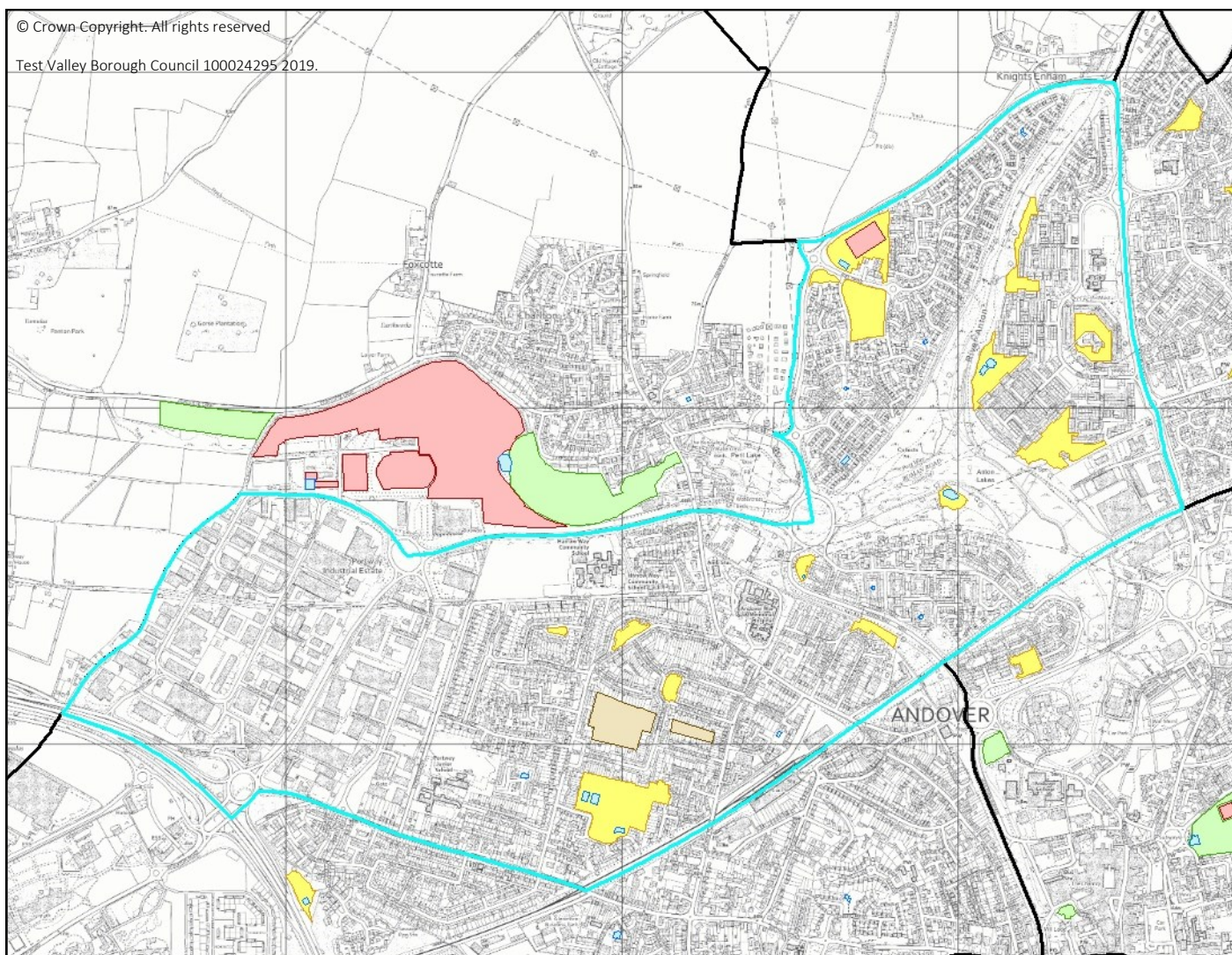
Public Open Space provision after Parish boundary changes

Public Open Space	Provision (Ha)	Requirement (Ha)	Balance (+/-)
Outdoor Sports Facilities	0.78*	5.70	-4.92
Parks and Gardens	0.00	2.28	-2.28
Informal Recreation Areas	23.74	4.56	19.18
Provision for Children and Teenagers	0.32	3.42	-3.10
Allotments	0.00	1.14	-1.14
Total	24.84	17.09	7.75

*This figure does not include the 9.64Ha Picket Twenty Outdoor Sports Facility as it serves the wider Andover area

Andover: Harroway

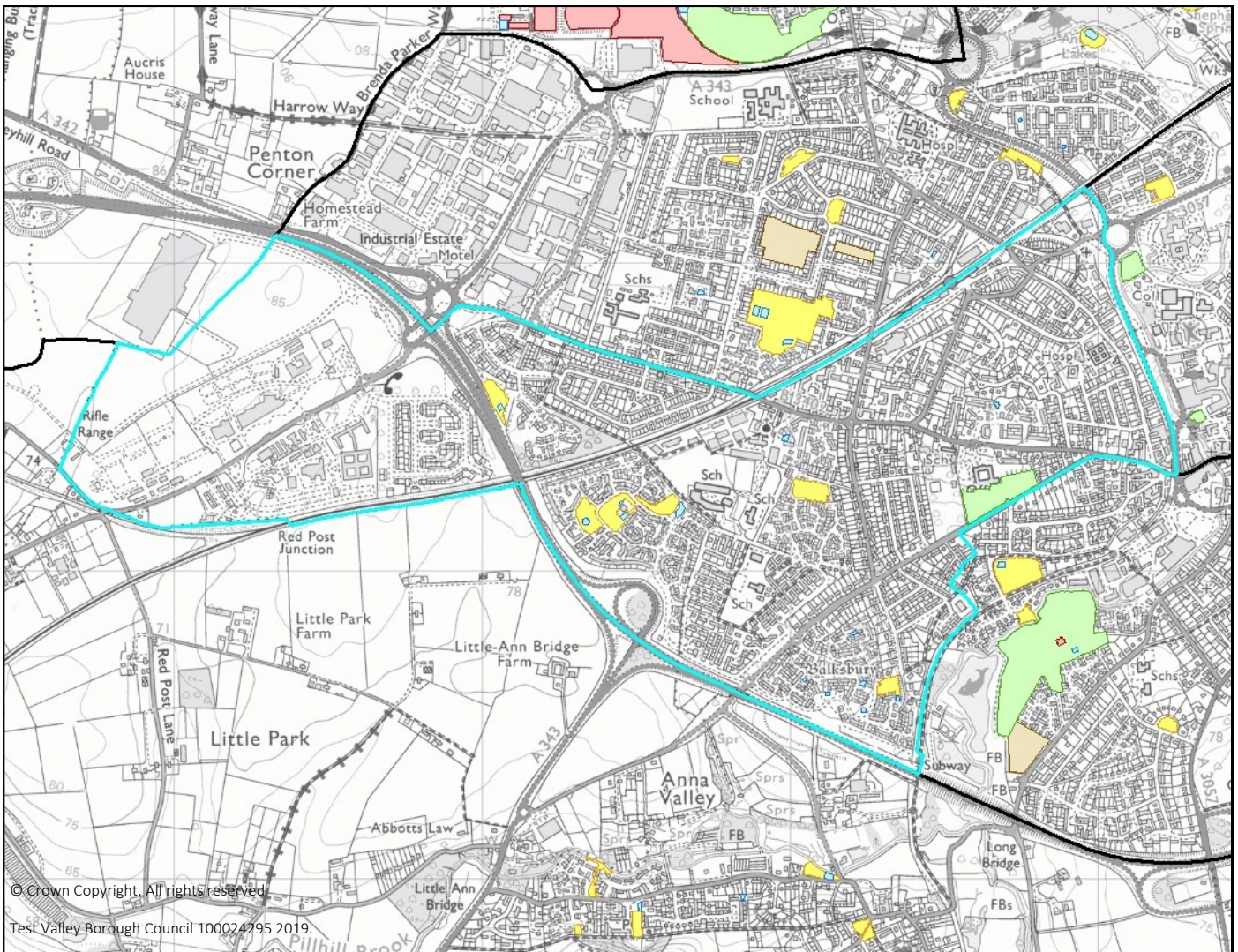
© Crown Copyright- All rights reserved
 Test Valley Borough Council 100024295 2019.



Public Open Space provision after Parish boundary changes

Public Open Space	Provision (Ha)	Requirement (Ha)	Balance (+/-)
Outdoor Sports Facilities	0.75	10.49	-9.83
Parks and Gardens	0.00	4.20	-4.20
Informal Recreation Areas	13.87	8.39	5.48
Provision for Children and Teenagers	0.51	6.29	-5.78
Allotments	2.58	2.10	0.48
Total	17.62	31.47	-13.85

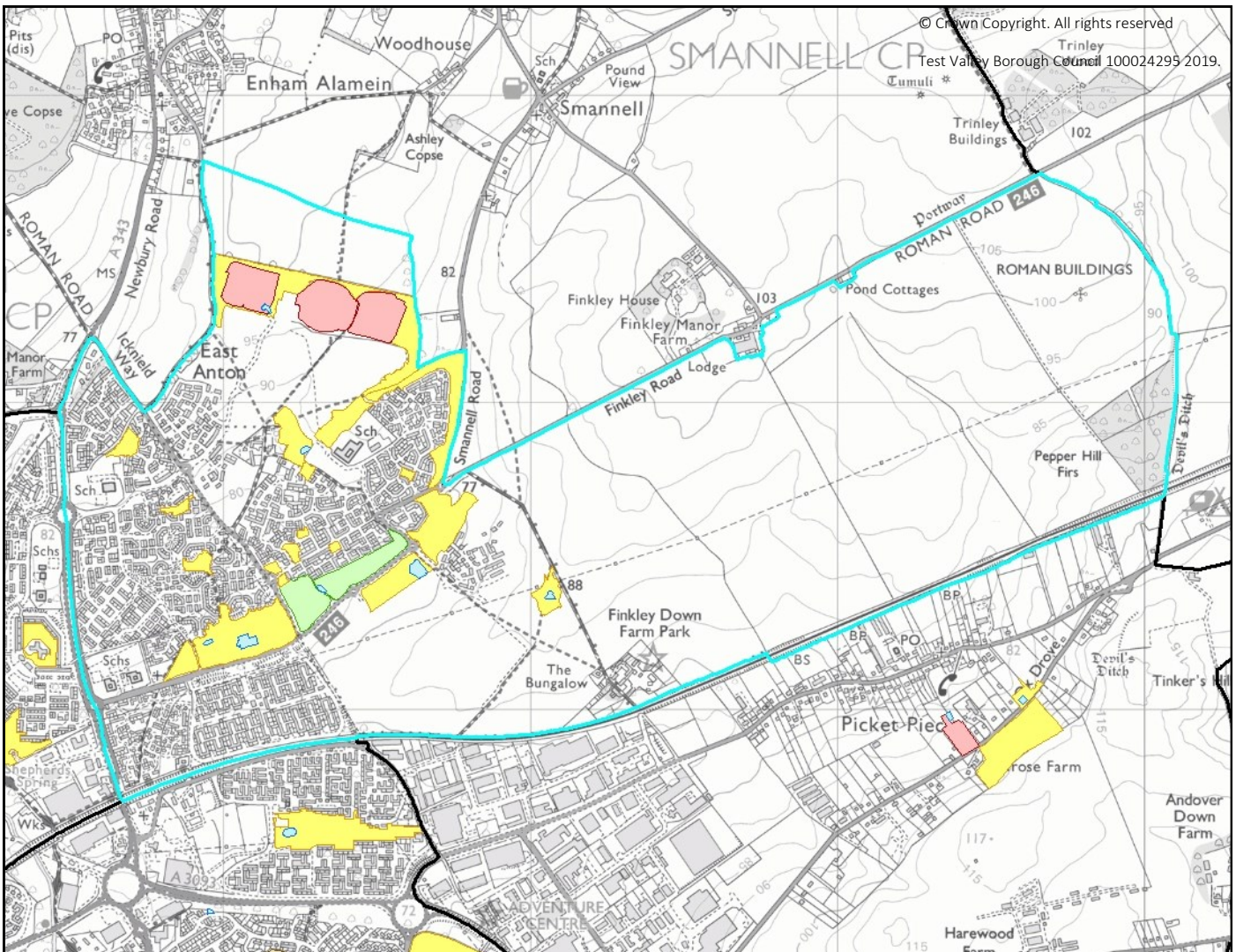
Andover: Millway



Public Open Space provision after Parish boundary changes

Public Open Space	Provision (Ha)	Requirement (Ha)	Balance (+/-)
Outdoor Sports Facilities	0.00	9.05	-9.05
Parks and Gardens	1.86	3.62	-1.76
Informal Recreation Areas	3.20	7.24	-4.04
Provision for Children and Teenagers	0.36	5.43	-5.07
Allotments	0.00	1.81	-1.81
Total	5.42	27.14	-21.72

Andover: Romans

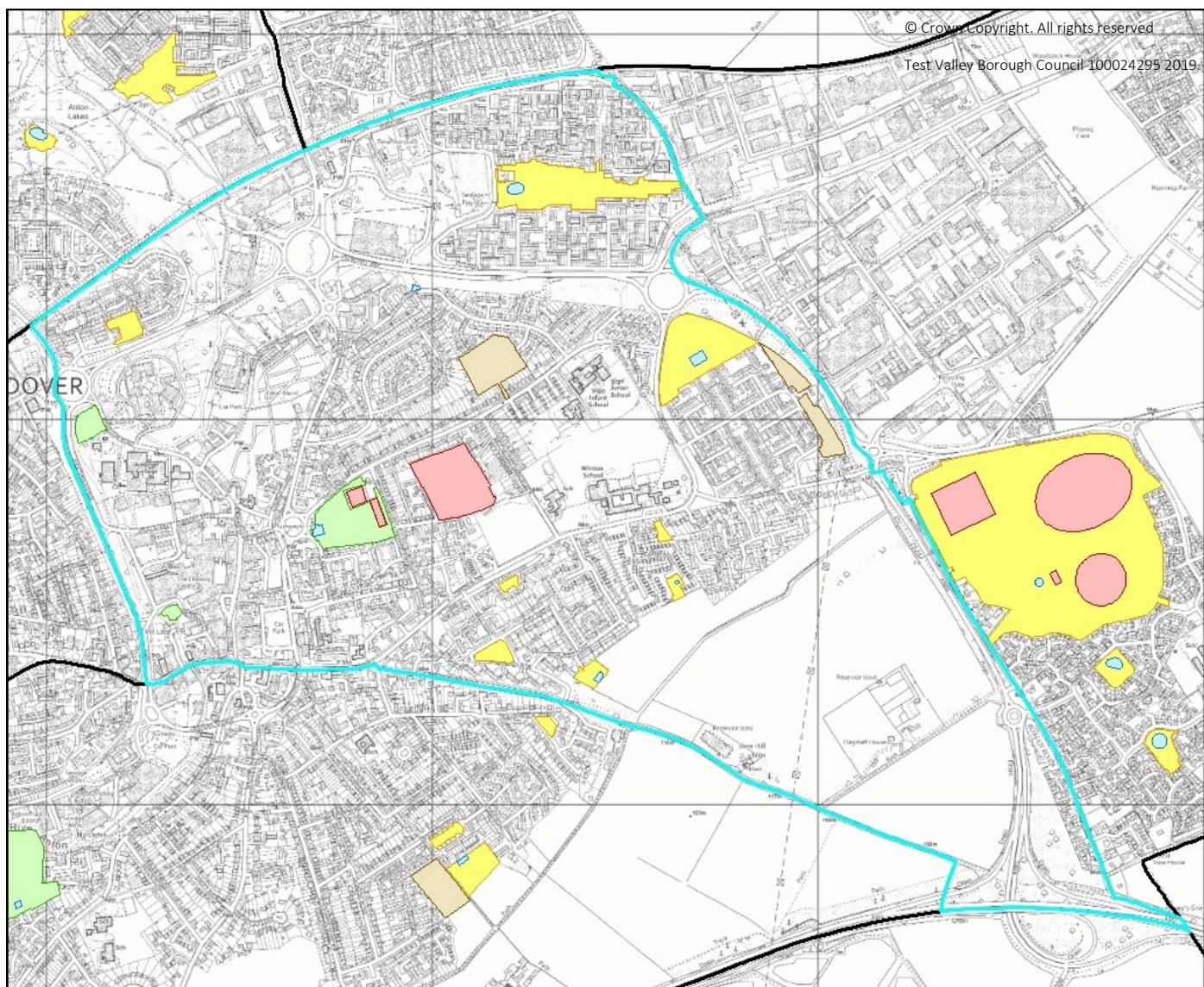


Public Open Space provision after Parish boundary changes

Public Open Space	Provision (Ha)	Requirement (Ha)	Balance (+/-)
Outdoor Sports Facilities	0.00*	8.87	-8.87
Parks and Gardens	3.77	3.55	0.22
Informal Recreation Areas	23.25	7.10	16.15
Provision for Children and Teenagers	0.69	5.32	-4.63
Allotments	0.00	1.77	-1.77
Total	27.71	26.62	1.09

*This figure does not include the 6.87Ha East Anton Outdoor Sports Facility as it serves the wider Andover area

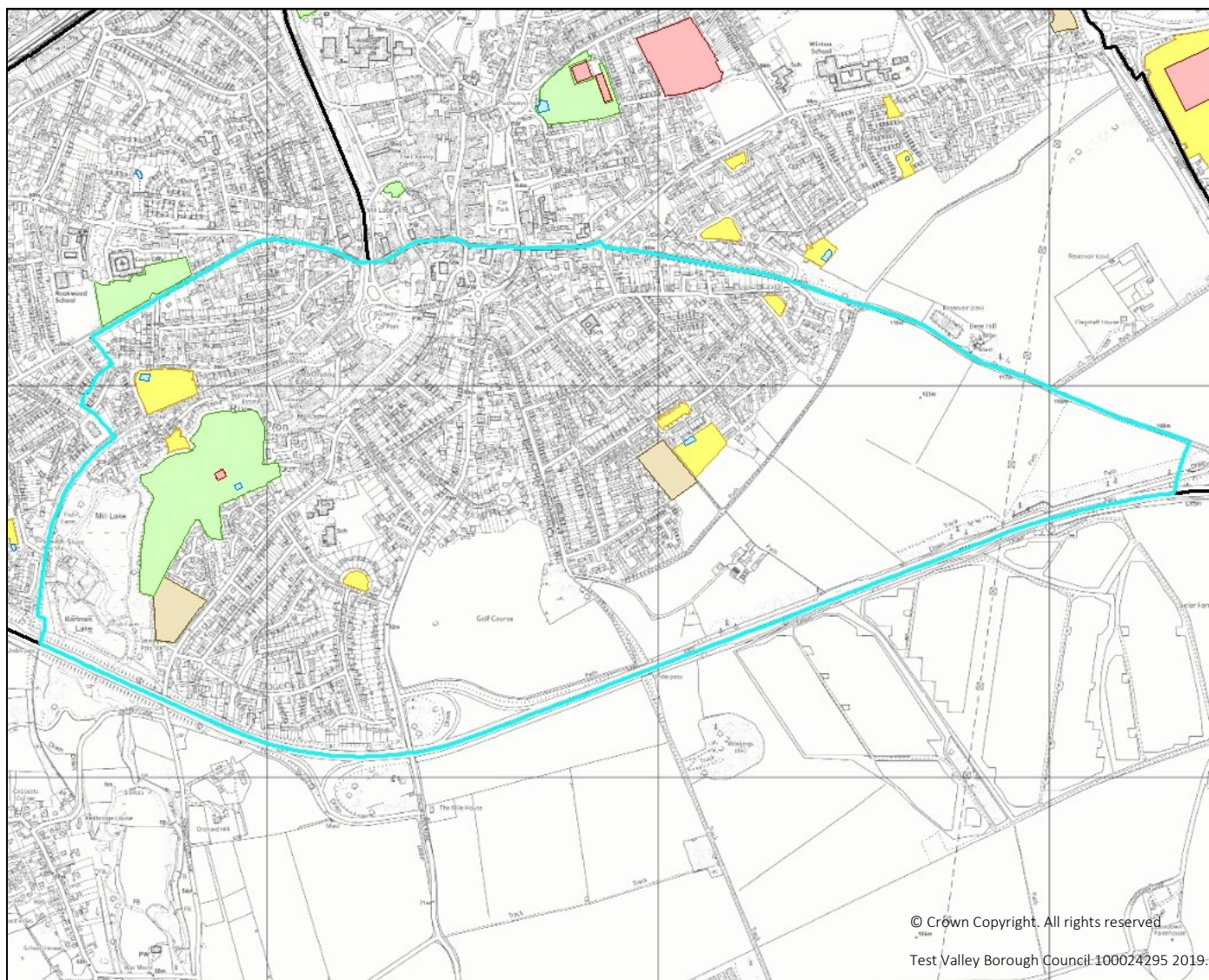
Andover: St Mary's



Public Open Space provision after Parish boundary changes

Public Open Space	Provision (Ha)	Requirement (Ha)	Balance (+/-)
Outdoor Sports Facilities	3.14	8.82	-5.85
Parks and Gardens	2.68	3.53	-0.85
Informal Recreation Areas	8.10	7.06	1.04
Provision for Children and Teenagers	0.34	5.29	-4.95
Allotments	2.79	1.76	1.03
Total	16.88	26.47	-9.59

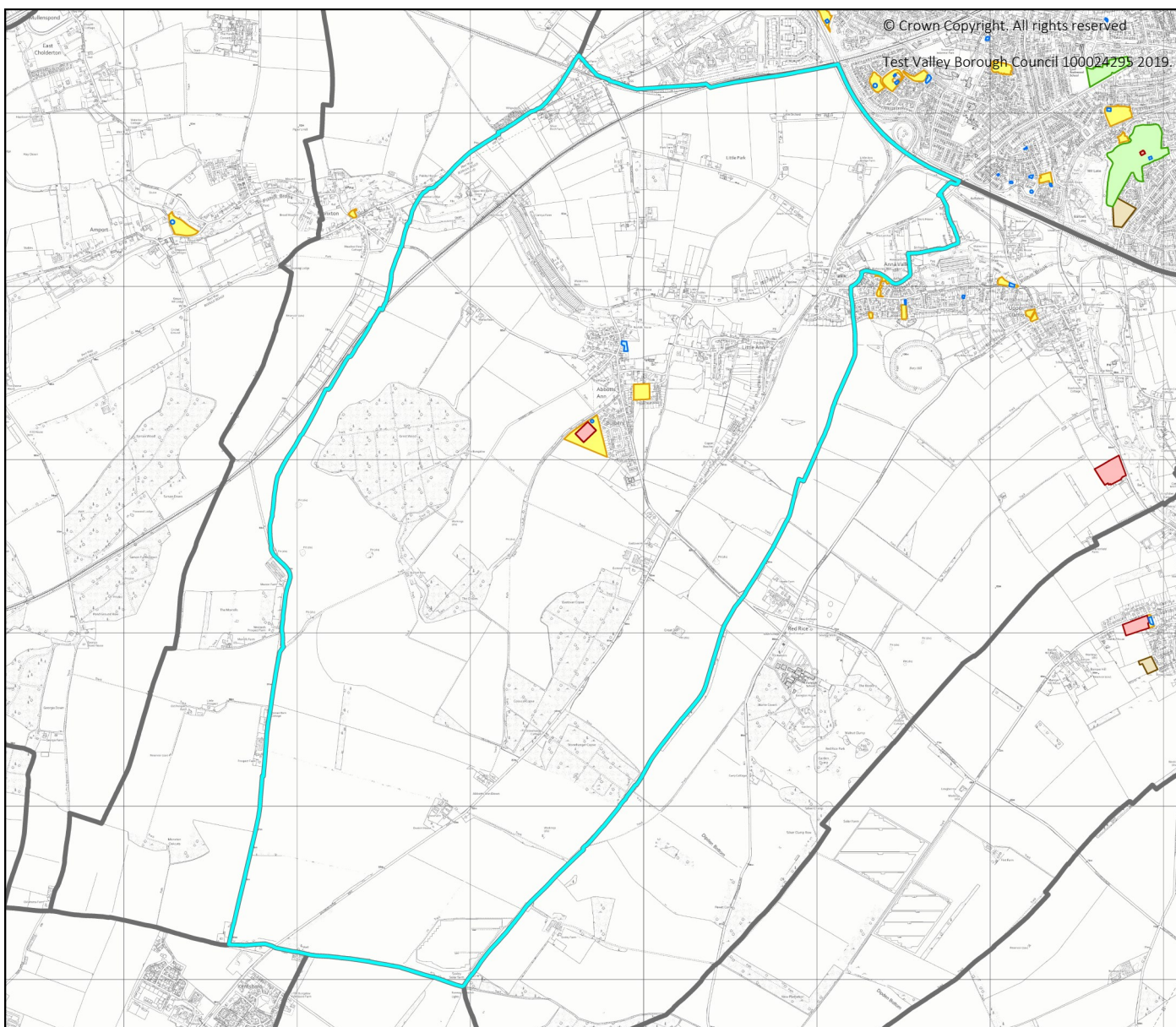
Andover: Winton



Public Open Space provision after Parish boundary changes

Public Open Space	Provision (Ha)	Requirement (Ha)	Balance (+/-)
Outdoor Sports Facilities	0.12	6.31	-6.26
Parks and Gardens	7.89	2.52	5.37
Informal Recreation Areas	2.95	5.05	-2.10
Provision for Children and Teenagers	0.09	3.79	-3.70
Allotments	2.48	1.26	1.22
Total	13.46	18.93	-5.47

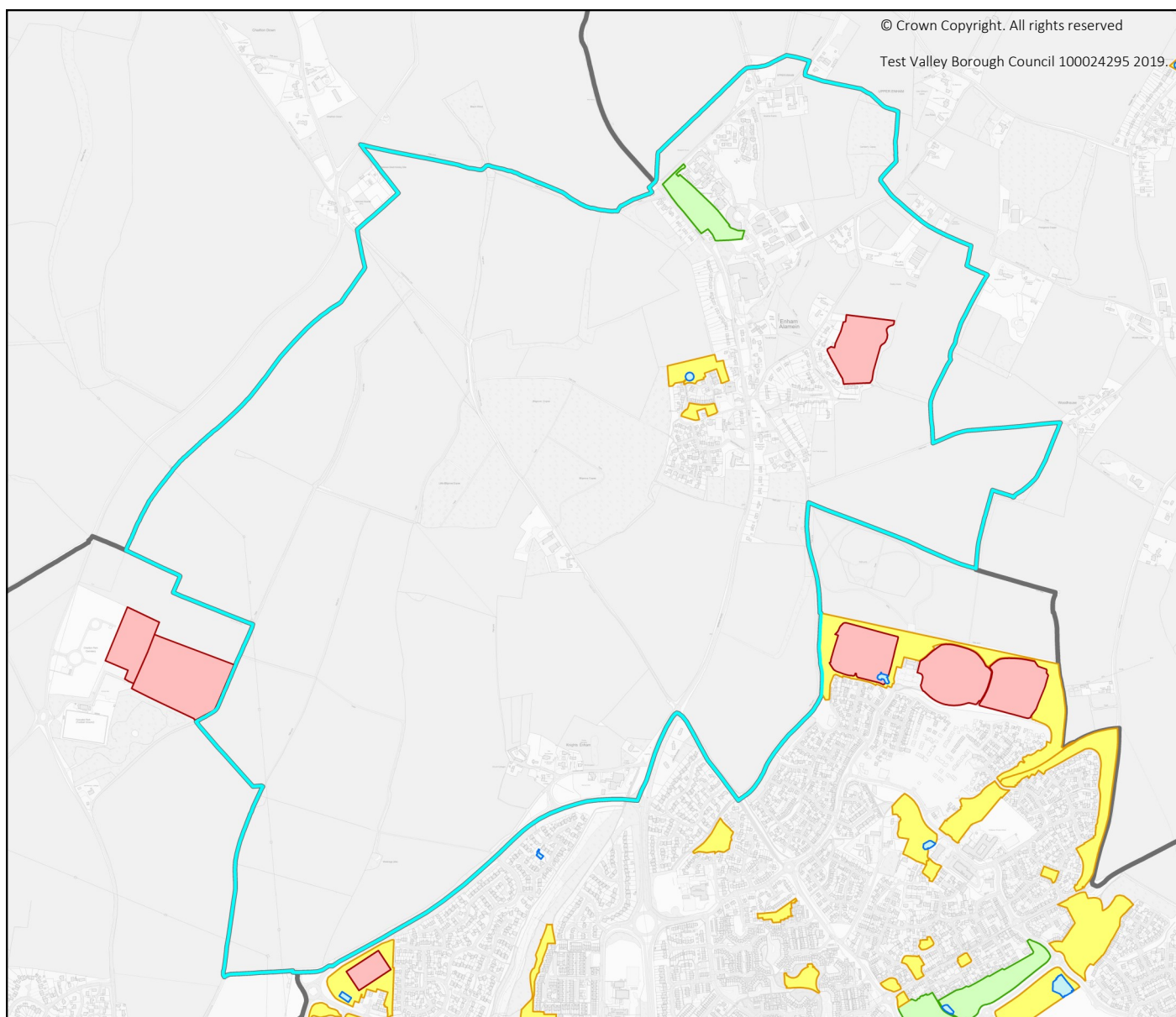
Abbots Ann



Public Open Space provision after Parish boundary changes

Public Open Space	Provision (Ha)	Requirement (Ha)	Balance (+/-)
Outdoor Sports Facilities	0.67	2.42	-1.75
Parks and Gardens	0.00	0.97	-0.97
Informal Recreation Areas	2.79	1.93	0.86
Provision for Children and Teenagers	0.15	1.45	-1.30
Allotments	0.00	0.48	-0.48
Total	3.61	7.25	-3.64
Total excluding Parkland	3.61	6.29	-2.68

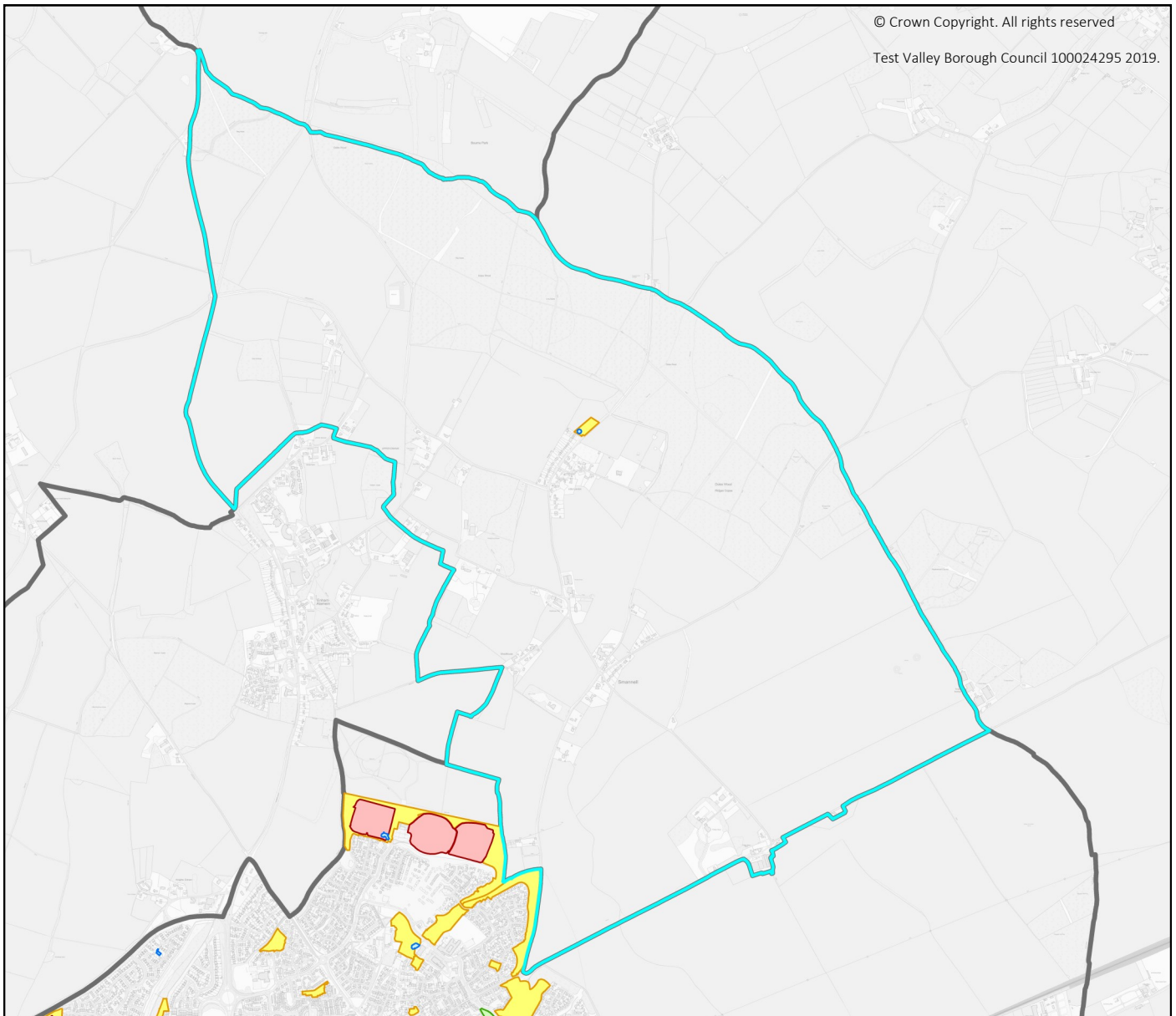
Enham Alamein



Public Open Space provision after Parish boundary changes

Public Open Space	Provision (Ha)	Requirement (Ha)	Balance (+/-)
Outdoor Sports Facilities	2.39	1.31	1.08
Parks and Gardens	1.50	0.52	0.98
Informal Recreation Areas	0.88	1.04	-0.16
Provision for Children and Teenagers	0.05	0.78	-0.73
Allotments	0.00	0.26	-0.26
Total	4.82	3.92	0.90
Total excluding Parkland	3.32	3.40	-0.08

Smannell



Public Open Space provision after Parish boundary changes

Public Open Space	Provision (Ha)	Requirement (Ha)	Balance (+/-)
Outdoor Sports Facilities	0.00	3.79	-3.79
Parks and Gardens	0.00	1.51	-1.51
Informal Recreation Areas	0.21	3.03	-2.82
Provision for Children and Teenagers	0.06	2.27	-2.21
Allotments	0.00	0.76	-0.76
Total	0.27	11.36	-11.09
Total excluding Parkland	0.27	9.85	-9.58