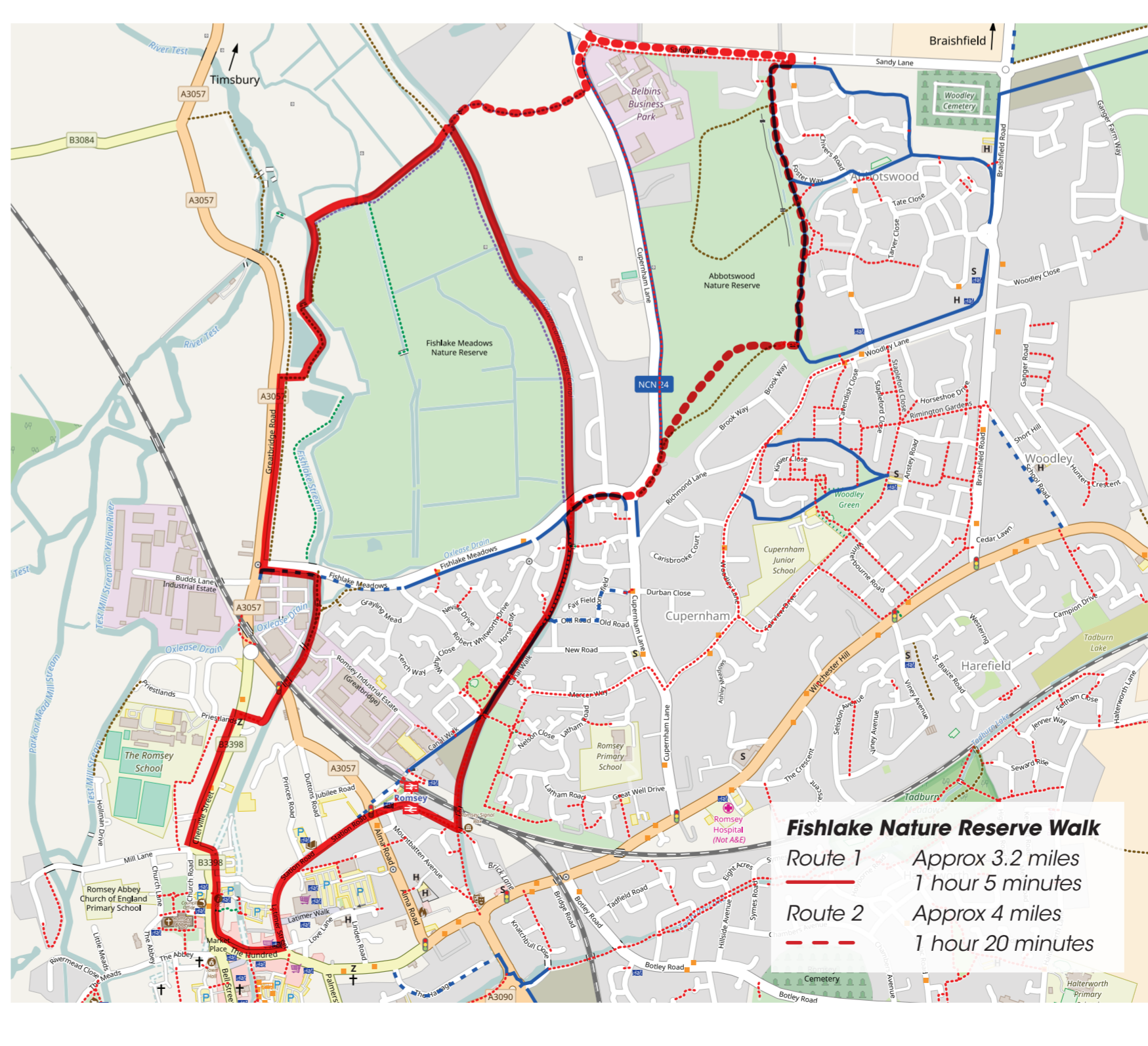
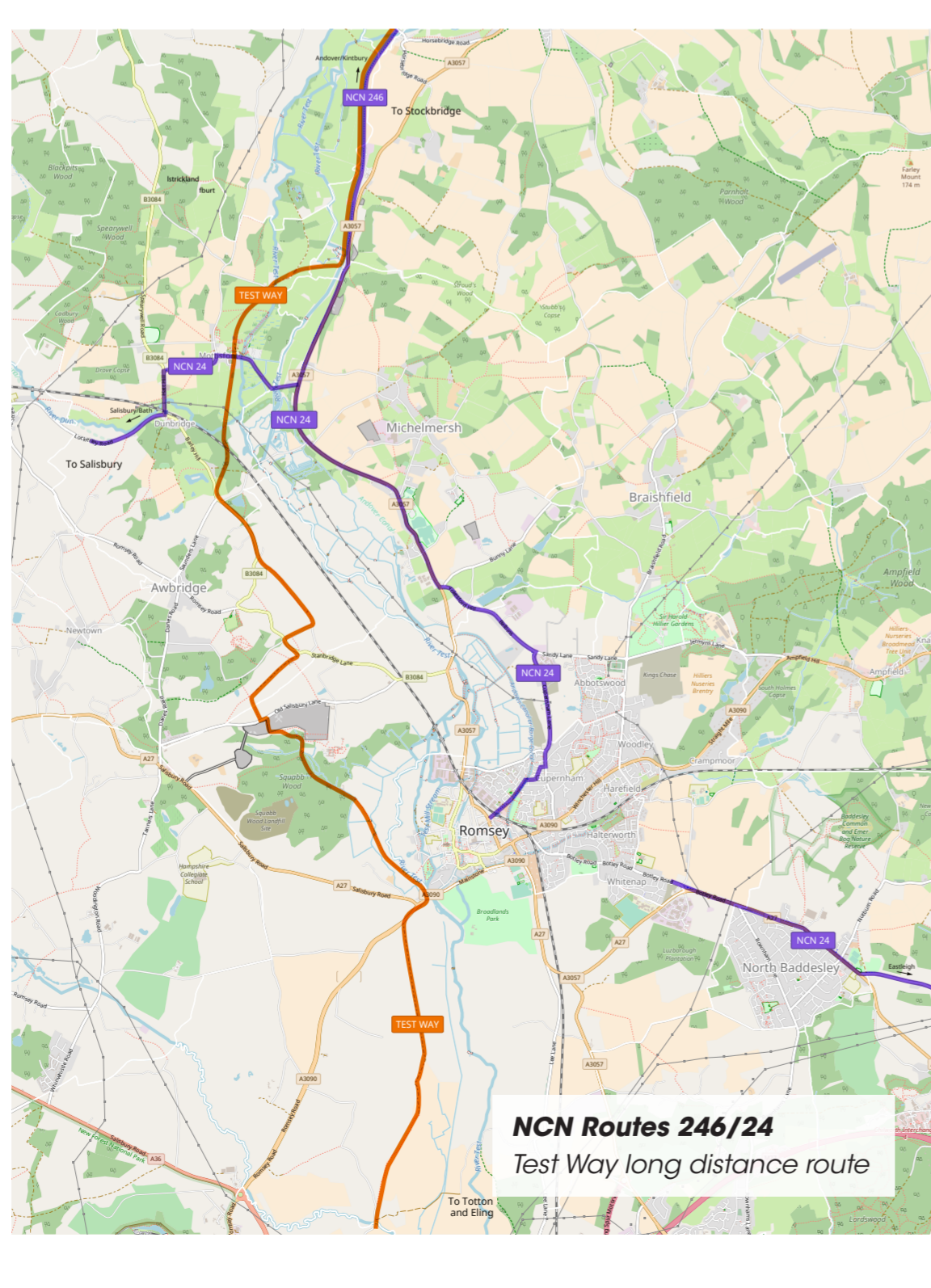


For more information about walking and cycling in Romsey and rest of Test Valley please visit:

www.testvalley.gov.uk
www.hants.gov.uk
www.sustrans.org.uk
www.romseycyclehub.weebly.com
www.myjourneyhampshire.com

Unsurfaced footpath	Shops
Gravel footpath	Cycle parking
Footpath	Bus stop
Footpath (limited or permissive opening)	Train station
Off road shared pedestrian/cycle route	Church
On road cycle route	Visitor Information Centre
Pedestrian crossing	Plaza theatre
Hospital	Council Offices
Romsey Signal Box	Library
Bus station	Zebra crossing
Car Park	Shopping area
Town Hall	Allotments
Community halls	Industrial Area
	Links to be provided in future



A beautiful historic market town

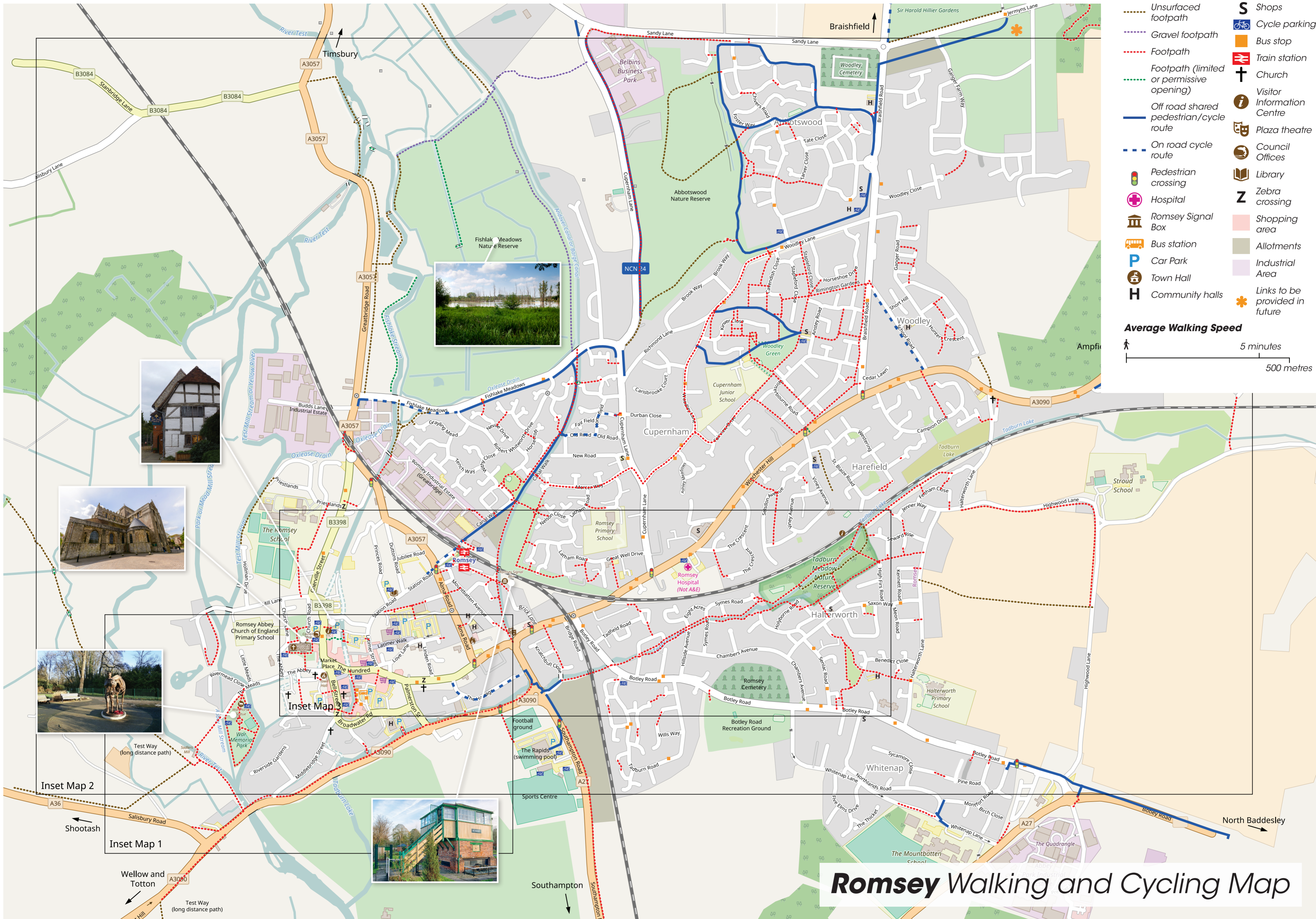
Romsey

Walking and Cycling Map

February 2020

Test Valley Borough Council

Romsey Future



- Unsurfaced footpath
- Gravel footpath
- Footpath
- Footpath (limited or permissive opening)
- Off road shared pedestrian/cycle route
- On road cycle route
- Pedestrian crossing
- Hospital
- Romsey Signal Box
- Bus station
- Car Park
- Town Hall
- Community halls
- Shops
- Cycle parking
- Bus stop
- Train station
- Church
- Visitor Information Centre
- Plaza theatre
- Council Offices
- Library
- Zebra crossing
- Shopping area
- Allotments
- Industrial Area
- Links to be provided in future

Average Walking Speed
 5 minutes
 500 metres

Inset Map

Inset Map 2

Inset Map 1

Romsey Walking and Cycling Map