

DATED 27th November 1959

HAMPSHIRE COUNTY COUNCIL

TOWN AND COUNTRY PLANNING ACT, 1947

TOWN AND COUNTRY PLANNING GENERAL
DEVELOPMENT ORDER, 1950

DIRECTION UNDER ARTICLE 4, NO.9

Land within the Borough of Eastleigh and
Rural District of Romsey and
Stockbridge

Entered 24.11.51

TOWN AND COUNTRY PLANNING ACT, 1947

*L.A. W. Bentley
Clerk to the County Council*

TOWN AND COUNTRY PLANNING GENERAL DEVELOPMENT ORDER, 1950

DIRECTION UNDER ARTICLE 4, NO. 9

WHEREAS:

(1) Article 3 of the Town and Country Planning General Development Order 1950 (hereinafter called "the Order") permits development by

(i) the use of land (other than a building or the curtilage of a building or the site or curtilage of a building which has been demolished in consequence of war damage) for any purpose on not more than 28 days in total in any calendar year and the erection or placing of moveable structures on the land for the purposes of that use

(ii) the carrying out on agricultural land having an area of more than one acre and comprised in an agricultural unit of building or engineering operations requisite for the use of that land for the purposes of agriculture other than the placing on land of structures not designed for those purposes or the provision and alteration of dwellings

being respectively Classes IV(2) and VI(1) of the First Schedule to the Order

(2) The operations and the uses of land specified in the First Schedule hereto are respectively development within Classes IV(2) and VI(1) of the Order

(3) The Hampshire County Council (hereinafter called "the Council") are the Local Planning Authority for the land specified in the Second Schedule hereto

(4) The Council deem it expedient that the development specified in the First Schedule hereto should not be carried out on the land specified in the Second Schedule hereto unless permission therefor is granted on application made under the Order

NOW THEREFORE the Council in pursuance of the powers conferred upon them by Article 4 of the Town and Country Planning General Development Order 1950 HEREBY DIRECT that the permission granted by Article 3 of the Order shall not apply to the development specified in the First Schedule hereto in respect of the land specified in the Second Schedule hereto

FIRST SCHEDULE

- (1) The use of land for any purpose and the erection or placing of moveable structures on the land for the purposes of that use
- (2) The carrying out on agricultural land of building or engineering operations requisite for the use of that land for the purposes of agriculture.

SECOND SCHEDULE

The land situate within the Borough of Eastleigh and the Rural District of Romsey and Stockbridge shown within a green line on the plan annexed hereto, being the Parcels numbered as follows on the Ordnance Survey Map for Hampshire:

| <u>Parish</u> | <u>Ordnance Sheet Editions</u> | <u>Plot Numbers</u> | | |
|----------------|--------------------------------|---------------------|----------|------|
| North Stoneham | 1909 | Part 82 | 84 | |
| | | Part 83 | Part 85 | |
| | 1933 | Part 50 | 143b | 219 |
| | | Part 54 | 144 | 220 |
| | | 55 | 145 | 221 |
| | | Part 56 | 147 | 222 |
| | | 57 | 148 | 223 |
| | | 58 | 149 | 224 |
| | | Part 59 | 153 | 225 |
| | | Part 60 | 154 | 226 |
| | | 63 | 155 | 227 |
| | | 74 | 156 | 228 |
| | | 75 | 157 | 229 |
| | | Part 76 | 153 | 230 |
| | | 77 | 159 | 231 |
| | | 78 | 159a | 256 |
| | | 79 | Part 176 | 264 |
| | | 80 | 177 | 276 |
| | | 81 | 177a | 276a |
| | | Part 82 | 177b | 276b |
| | | Part 83 | 177c | 276c |
| | | 84 | 177d | 276d |
| | | Part 102 | 177e | 276e |
| | | Part 102a | 177f | 280 |
| | | 105 | 173 | 281 |
| | | Part 106 | 179 | 281a |
| | | 107 | 180 | 282 |
| | | 108 | 181 | 283 |
| | 109 | 183 | 284 | |
| | 110 | 184 | 285 | |
| | 135 | 185 | 283 | |
| 136 | 186 | 283a | | |
| 143 | Part 218 | 311 | | |
| 143a | 218a | 312 | | |
| | | 316 | | |
| Chilworth | 1909 | Part 7 | 20 | |
| | | 8 | 21 | |
| | | 15 | 24 | |
| | | 17 | 26 | |
| | | 18 | Part 27 | |
| | | 19 | 23 | |
| | | 39 | 54 | |
| | | 40 | 55 | |
| | | 41 | 56 | |
| | | | Part 78 | |

| <u>Parish</u> | <u>Ordnance Sheet Editions</u> | <u>Plot Numbers</u> | | | |
|----------------|--------------------------------|---------------------|------|----------|----------|
| Chilworth | 1909 | | 42 | 58 | 81 |
| | | | 43 | Part 61 | 82 |
| | | | 45 | 62 | 82a |
| | | | 46 | 62a | 83 |
| | | | 47 | Part 66 | 84 |
| | | Part | 48 | 67 | 85 |
| | | Part | 50 | 68 | 86 |
| | | | 51 | 70a | Part 101 |
| | | | 52 | Part 72 | Part 106 |
| | | | 53 | 77 | 175 |
| | | North Baddesley | 1909 | Part | 145 |
| Part | 146 | | | Part 149 | 154 |
| Part | 147 | | | 152 | |
| 1933 | Part | | 145 | Part 147 | Part 149 |
| | Part | | 146 | Part 148 | |
| | | | | | |
| Chandlers Ford | 1909 | Part | 361 | 363 | 364 |
| | | | 362 | | |
| | 1933 | | 318 | 360 | Part 361 |
| | | Part | 320 | | |
| Eastleigh | 1933 | | 84 | 131 | 139 |
| | | | 85 | 132 | 139a |
| | | | 86 | Part 133 | 139b |
| | | Part | 87 | 134 | 139c |
| | | Part | 88 | 136 | 140 |
| | | Part | 127 | 136a | 141 |
| | | | 128 | 137 | 148 |
| | | Part | 129 | 137a | 187 |
| | | | 130 | Part 138 | |
| | | | | | |

GIVEN under the Common Seal of the Council this 27th day of November 1959.

THE COMMON SEAL of the HAMPSHIRE)
COUNTY COUNCIL was hereunto affixed)
in the presence of:)

A. Lubbock

Richard Calthorpe

SEAL 4761

Two Members of the County Council

G. A. Wheatley

Clerk of the County Council

P8732

The Minister of Housing and Local Government hereby approves the foregoing direction

Given under the official seal of the
Minister of Housing and Local Government
this eighteenth day of July
nineteen hundred and sixty one.

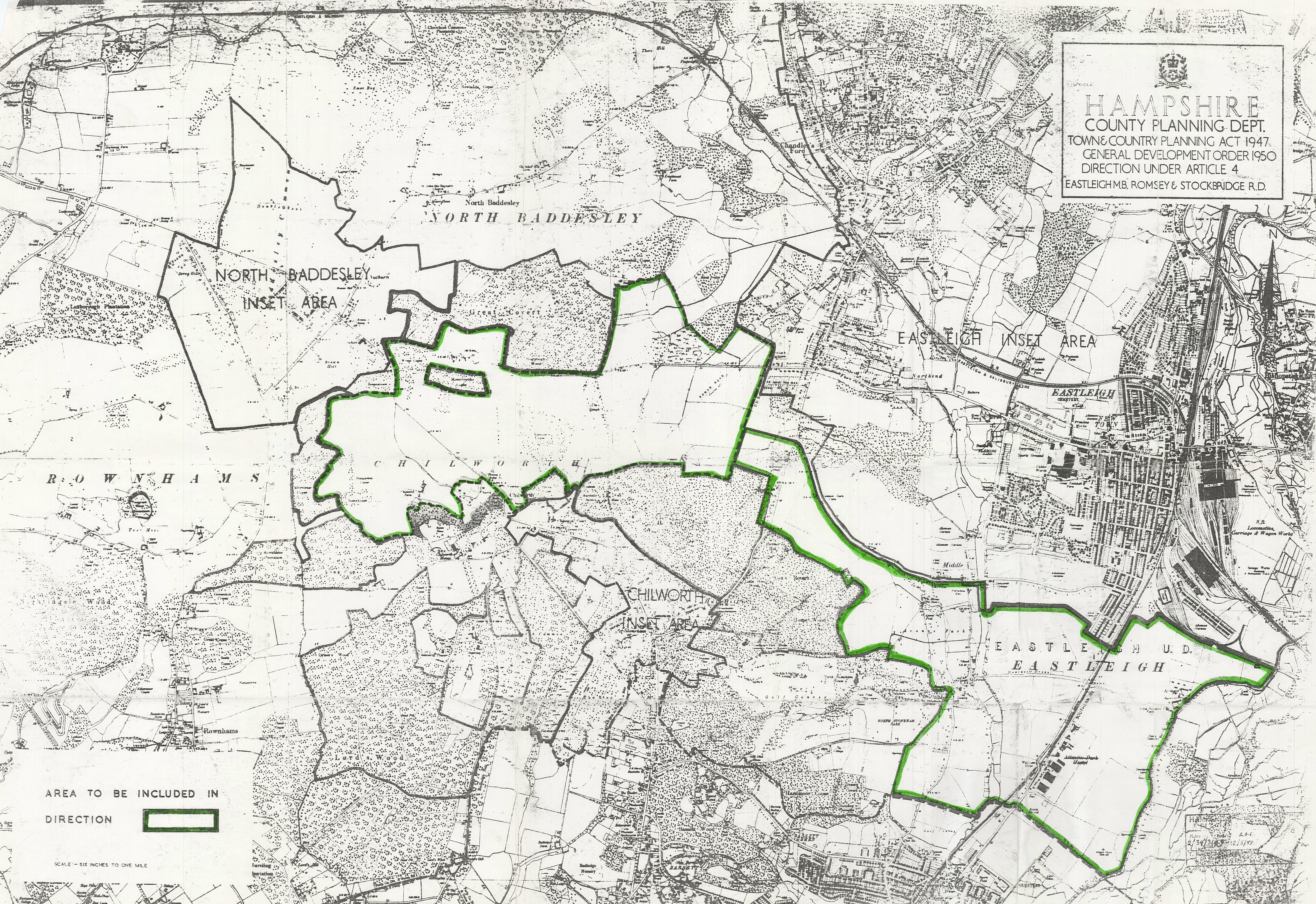
H.H. Browne.

Assistant Secretary,
Ministry of Housing and Local Government.

SEAL.



HAMPSHIRE
COUNTY PLANNING DEPT.
TOWN & COUNTRY PLANNING ACT 1947.
GENERAL DEVELOPMENT ORDER 1950
DIRECTION UNDER ARTICLE 4
EASTLEIGH M.B. ROMSEY & STOCKBRIDGE R.D.



North Baddesley
NORTH BADDESLEY

NORTH BADDESLEY
INSET AREA


EASTLEIGH
INSET AREA

ROWNHAMS

CHILWORTH

CHILWORTH
INSET AREA

EASTLEIGH U.D.
EASTLEIGH

AREA TO BE INCLUDED IN
DIRECTION 

SCALE - SIX INCHES TO ONE MILE

HAMPSHIRE COUNTY PLANNING DEPT.
PLAN 2/34/20/10/12/5/50