

Authority's Monitoring Report (AMR)



2018 - 2019

Contents

| | |
|---|-----------|
| Glossary of Terms | 6 |
| Executive Summary..... | 11 |
| Introduction..... | 15 |
| 1 Introduction & Background | 15 |
| 2 Format of the Report | 17 |
| 3 Test Valley Profile..... | 18 |
| <i>Map 1: Area of Test Valley</i> | <i>19</i> |
| <i>Table 1: Average house prices in Test Valley.....</i> | <i>20</i> |
| <i>Figure 1: Comparison of unemployment levels between Test Valley, the South East and Great Britain (2008 – 2019).....</i> | <i>21</i> |
| Part One: Local Development Scheme and Community Infrastructure Levy Monitoring | 22 |
| 4 Monitoring of the Local Development Scheme (LDS) | 22 |
| 5 Community Infrastructure Levy (CIL) | 23 |
| <i>Table 2: CIL financial details for the year 2018/19.....</i> | <i>24</i> |
| 6 Duty to Co-operate | 25 |
| 7 New Forest National Park Authority | 25 |
| Part Two: Monitoring the Revised Local Plan (RLP)..... | 27 |
| 8 Revised Test Valley Borough Local Plan 2011 - 2029 | 27 |
| 9 Delivering Sustainable Development..... | 27 |
| 10 Local Communities | 28 |
| Housing Delivery | 28 |
| <i>Table 3: Housing completions against Revised Local Plan requirements (2011-2019).....</i> | <i>29</i> |
| Housing Land Supply | 29 |
| Housing Completions and Losses..... | 30 |
| <i>Table 4: Summary of main housing gains and losses (10 or more units in reporting year)</i> | <i>30</i> |
| <i>Table 5: Cumulative completions on strategic sites as at March 2019</i> | <i>31</i> |
| Outstanding Housing Permissions | 31 |
| <i>Table 6: Outstanding Housing Permissions (as at 1 April 2019).....</i> | <i>31</i> |
| Affordable Housing..... | 32 |

| | |
|--|-----------|
| <i>Figure 2: Affordable Housing Completions (2011-2019)</i> | 32 |
| Empty Properties..... | 33 |
| <i>Figure 3: Number of empty properties brought back into use in Test Valley (2011-2019)</i> | 33 |
| New Homes Bonus | 33 |
| <i>Table 7: New Homes Bonus (2012-2020)</i> | 34 |
| Self-Build & Custom Housebuilding | 34 |
| Dwellings on Previously Developed Land | 35 |
| <i>Figure 4: C(H3) Percentage of new and converted dwellings on Previously Developed Land (2011-2019)</i> | 35 |
| New dwellings by Density | 36 |
| <i>Figure 5: L9 Percentage of new dwellings by density (2 or more dwellings) (2011-2019)</i> | 36 |
| Sites for Gypsies, Travellers and Travelling Showpeople | 36 |
| Design Quality..... | 37 |
| 11 Local Economy | 38 |
| Employment Land | 38 |
| <i>Figure 6: C(BD1) Amount of floor space developed for employment by type (2011-2019)</i> | 39 |
| <i>Figure 7: C(BD2) Percentage of BD1, by type, which is on Previously Developed Land (2011-2019)</i> | 40 |
| <i>Figure 8: Available Employment Land (2011-2019)</i> | 41 |
| <i>Figure 9: C(BD3) Amount of employment land available according to type (April 2018 – March 2019)</i> | 41 |
| <i>Figure 10: L7 Loss of employment land in Test Valley (2011-2019)</i> | 42 |
| Local Services..... | 43 |
| <i>Figure 11: Completed retail, office and leisure development in Test Valley (2011-2019)</i> | 43 |
| <i>Figure 12: C(BD4) Completed retail, office and leisure development in town centres in Test Valley (2011-2019)</i> | 44 |
| Ground Floor Uses within the Primary Shopping Areas of Andover and Romsey | 44 |
| <i>Figure 13: L4 Local Plan Shop Frontage Percentage Targets (Andover) (2016-2019)</i> | 45 |
| Vacant Units in Andover..... | 46 |
| <i>Figure 14: Vacant units in Andover town centre (2016-2019)</i> | 46 |
| <i>Figure 15: L5 Local Plan Shop Frontage Percentage Targets (Romsey) (2016-2019)</i> | 47 |
| Vacant Units in Romsey | 47 |
| <i>Figure 16: Vacant units in Romsey town centre (2016-2019)</i> | 47 |

| | |
|---|-----------|
| Stockbridge Local Centre | 48 |
| <i>Figure 17: Vacant Units in Stockbridge Local Centre (2016-2019)</i> | 48 |
| 12 Environment | 49 |
| Waste and Recycling | 49 |
| <i>Figure 18: L6 Percentage of waste recycled in Test Valley (2011-2019)</i> | 50 |
| Air Quality | 50 |
| <i>Figure 19: L1 Number of planning applications where air quality was assessed as a material consideration (2011-2019)</i> | 51 |
| Renewable Energy..... | 51 |
| <i>Table 9: C(E3) Renewable Energy Generation</i> | 51 |
| Flood Risk and Water Quality..... | 52 |
| <i>Table 10: C(E1) List of applications objected to by the Environment Agency</i> 52 | |
| Biodiversity..... | 53 |
| <i>Figure 20: C(E2) Change in areas of Biodiversity Importance (2011-2019)</i> .. | 54 |
| <i>Table 11: Extent of Biodiversity Action Plan Priority habitats in Test Valley and Hampshire (in hectares) (2011-2019)</i> | 55 |
| <i>Table 12: Status of Sites of Special Scientific Interest (SSSI) Designations within Test Valley (2011-2019)</i> | 57 |
| Local Biodiversity Action Plan (LBAP)..... | 58 |
| 13 Leisure, Health and Wellbeing | 60 |
| Public Open Space | 60 |
| <i>Figure 21: Public open space contributions (2011-2019)</i> | 61 |
| <i>Figure 22: L13 Percentage of eligible open spaces managed to Green Flag Award standard (2011-2019)</i> | 62 |
| 14 Transport | 63 |
| Mode of transport used for commuting..... | 63 |
| <i>Figure 23: Mode of transport used for commuting in Test Valley Borough</i> | 63 |
| <i>Figure 24: L3 Number of Travel Plans for new developments likely to have a significant traffic generating impact (2011-2019)</i> | 64 |
| 15 Community Safety | 66 |
| <i>Figure 25: Crime statistics for Test Valley (2017-2019)</i> | 66 |
| 16 Education and Learning | 67 |
| <i>Figure 26: Percentage of population achieving qualification level in Test Valley, South East England and Great Britain (2018/19)</i> | 67 |
| 17 Conclusion | 69 |
| Appendices | 71 |
| Appendix 1: Reference list of Core Output Indicators and Local Output Indicators | 71 |

| | |
|--|-----------|
| Appendix 2: Comparison of unemployment levels between Test Valley, the South East and Great Britain (2008 – 2019) | 73 |
| Appendix 3: Area of the New Forest National Park that lies within Test Valley Borough | 74 |
| Appendix 4: Comparison of policies of the Borough Local Plan (BLP, 2006) and Revised Local Plan (RLP, 2016)..... | 75 |
| Appendix 5: Housing Trajectory Guidance Note Summary | 80 |
| Appendix 6: Housing Trajectory 2011/12-2028/29 for Northern Test Valley (as at April 2019) | 81 |
| Appendix 7: Housing Trajectory 2011/12-2028/29 for Southern Test Valley (as at April 2019) | 83 |
| Appendix 8: Map illustrating extent of Northern Test Valley and Southern Test Valley | 85 |
| Appendix 9: Percentage of new and converted dwellings on Previously Developed Land (2011/12-2018/19) | 86 |
| Appendix 10: L7 Loss of employment land in Test Valley (2011-2019)..... | 87 |
| Appendix 11: Distribution of Hampshire BAP Species (N=50) For Annual Reporting from 2008 to 2018 | 89 |
| Appendix 12: Percentage of population achieving qualification level in Test Valley (2011-2018) | 91 |

Glossary of Terms

Authority's Monitoring Report: Section 113 of the Localism Act (2011) requires that a monitoring report must be published assessing the implementation of policy and progress of the Local Development Scheme. This must be done at least annually.

Community Infrastructure Levy (CIL): A levy that local authorities can choose to charge on new development. The charges are related to the size and type of the new development. The money collected can be spent on funding infrastructure which the Council has identified as being required.

Community Plan: Local Authorities are required by the Government Act 2000 to prepare these, with the aim of improving the social, environmental and economic wellbeing of their areas. Using the Community Plan, authorities are expected to co-ordinate the action of public, private, voluntary and community sectors (through the Local Strategic Partnership). The Test Valley Partnership has produced 'Your Test Valley', the Community Plan for the Borough.

Conservation: The process of maintaining and managing change to a heritage asset in a way that sustains and, where appropriate, enhances its significance.

Custom-build: Refers to when an individual or an association of individuals commissions a specialist developer to deliver a new home.

Development Management Policies: These are a suite of criteria-based policies which are required to ensure that all development within the area meets the spatial vision and spatial objectives set out in the Local Plan.

Development Plan: The Development Plan comprises the Development Plan Documents contained within the Local Development Framework, and the Minerals and Waste Plans produced jointly by Hampshire County Council, Portsmouth and Southampton City Councils and the New Forest and South Downs National Park Authorities.

Development Plan Documents (DPDs): Spatial planning documents that are subject to independent examination and will form the development plan for a local authority area for the purposes of the Planning and Compulsory Purchase Act 2004. In Test Valley this will include a Local Plan and a Gypsy & Traveller document. Others may be produced if necessary. Individual Development Plan Documents or parts of a document can be reviewed independently of other Development Plan Documents. Each authority must set out the programme for preparing its Development Plan Document in the Local Development Scheme (LDS).

Duty to Cooperate: The duty to cooperate was created in the Localism Act (2011). It places a legal duty on local planning authorities, county councils and public bodies to engage constructively, actively and on an ongoing basis on strategic cross boundary matters.

Evidence Base: The evidence and information used to inform Development Plan Documents.

Green Infrastructure (GI): A network of multi-functional green space, urban and rural, which is capable of delivering a wide range environmental and quality of life benefits for local communities.

Habitats Regulations Assessment (HRA): This is based on a legal requirement (through the Conservation of Habitats and Species Regulations 2017). It included assessing the potential effects of land use plans on the conservation objectives of Natura 2000 sites, which are designated for their nature conservation importance. This includes Special Areas of Conservation (SACs) and Special Protection Areas (SPAs). Guidance also recommends considering the effects on Ramsar Sites.

Infrastructure Delivery Plan (IDP): The IDP forms part of the evidence base for the Local Plan. It assesses the capability and deficits in infrastructure which are needed to deliver the requirements of the Local Plan.

Local Development Scheme (LDS): This sets out the programme for preparing planning guidance. The Council's LDS was approved in June 2017 and can be found on the Planning pages of the Council's website.

Local Plan: This sets out the long-term spatial vision for the local planning authority area and the spatial objectives and strategic policies to deliver that vision through development management policies and strategic site allocations.

Local Planning Authority (LPA): The public authority whose duty it is to carry out specific planning functions for a particular area.

Local Enterprise Partnership (LEP): LEPs are partnerships between local authorities and businesses and play a key role in establishing local economic priorities to create jobs and support local businesses. As of April 2019, Test Valley Borough Council was no longer included in the Solent LEP, but is solely within the Enterprise M3 LEP.

Local Strategic Partnership (LSP): This is a partnership of stakeholders who develop ways of involving local people in shaping the future of their area in terms of how services are provided. They are often single, non-statutory, multi-agency bodies which aim to bring together locally the private, public, community and voluntary sectors. The Test Valley Partnership is the LSP for the Borough.

Neighbourhood Development Plan (NDP): Through the Localism Act, Parish Councils can influence planning decisions in their area and can propose land for development provided that they are in line with the development plan.

National Planning Policy Framework (NPPF): The NPPF sets out the national planning policy for plan making and decision taking.

National Planning Practice Guidance (NPPG): An online resource which provides guidance on how to apply the policies and guidance in the NPPF.

Northern Test Valley (NTV): This relates to the area of the Borough excluding Southern Test Valley and the New Forest National Park.

Open Space: All open spaces covered in the Revised Local Plan DPD (2011-2029).

Partnership for South Hampshire (PfSH): This is an organisation comprising East Hampshire, Eastleigh, Fareham, Gosport, Hampshire County, Havant, New Forest, Portsmouth, Southampton, Test Valley and Winchester Councils, and New Forest National Park. They have come together to improve the economic performance of South Hampshire and enhance it as a place to live and work.

Previously Developed Land (PDL): Land which is or was occupied by a permanent structure, including the curtilage of the developed land and any associated fixed surface infrastructure (a full definition can be found in the NPPF).

Primary Shopping Area: Defined area where retail development is concentrated (generally comprising the primary and secondary frontages which are adjoining and closely related to the primary frontage).

Priority Habitats and Species: Species and Habitats of Principle Importance included in the Biodiversity List published by the Secretary of State under section 41 of the Natural Environment and Rural Communities Act 2006.

Proposals Map: The proposals map identifies areas of protection, allocated sites for development and set out areas to which specific policies apply.

Ramsar Sites: Wetlands of international importance, designated under the 1971 Ramsar Convention.

Self-build: Refers to when an individual or an association of individuals directly organises the design and construction of a new home.

Sites of Special Scientific Interest (SSSI): Sites designated by Natural England under the Wildlife and Countryside Act 1981.

Site Specific Allocations: These include sites for specific or mixed use development contained in Development Plan Documents. Policies will identify specific requirements for individual proposals.

Southern Test Valley (STV): This comprises the seven parishes of Ampfield, Chilworth, North Baddesley, Nursling and Rownhams, Romsey Extra, Romsey Town and Valley Park – it is the part of the Borough covered by PfSH.

Special Areas of Conservation (SAC): Areas given special protection under the European Union's Habitat Directive, which is transposed into UK Law by the Habitats and Conservation of Species Regulation 2017, based on the habitats and species they support.

Special Protection Areas (SPA): Areas which have been identified as being of international importance for the breeding, feeding, wintering or the migration of rare and vulnerable species of birds found within the European Union countries.

Statement of Community Involvement (SCI): This sets out the standards which authorities will achieve with regard to involving local communities in the preparation of planning documents and development management decisions. The Statement of Community Involvement is not a Development Plan Document. The Test Valley SCI can be viewed on the Planning pages of the Council's website.

Strategic Environmental Assessment (SEA): This is a term used to describe environmental assessment as applied to policies, plans and programmes. The European 'SEA Directive' (2001/42/EC) requires a formal environmental assessment of certain plans and programmes, including those in the fields of housing and land use.

Strategic Housing and Economic Land Availability Assessment (SHELAA): The SHELAA provides information on potential housing and/or employment sites promoted by landowners/developers with details on whether they are available, suitable and achievable.

Strategic Housing Market Assessment (SHMA): The SHMA forms part of the evidence base by setting out information on the level of need and demand for housing in housing market areas. In the case of Test Valley it is the South Hampshire SHMA and the Test Valley SHMA.

Strategic Sites: These are sites which are considered central to achieving the needs of the Borough. The Test Valley Local Plan includes a number of strategic sites at Andover and in Southern Test Valley.

Supplementary Planning Documents (SPD): These provided supplementary information in respect of the policies in Development Plan Documents. They do not form part of the Development Plan and are not subject to independent examination. The Council has produced a number of SPDs; they can be found on the Planning pages of the Council's website.

Sustainability Appraisal (SA): This is a tool for appraising policies to ensure they reflect sustainable development objectives (i.e. social, environmental and economic considerations). There is a requirement in the Planning and Compulsory Purchase Act that sustainability appraisals are undertaken for all Development Plan Documents.

The Regulations: This relates to the Town and Country Planning (Local Planning) (England) Regulations 2012.

Travel Plan: A long-term management strategy for an organisation or site that seeks to deliver sustainable transport objectives through action and is articulated in a document that is regularly reviewed.

Windfall: Windfall sites are those sources of housing supply that have not been specifically identified but are likely to be brought forward in the Local Plan period.

Executive Summary

1 Introduction

- 1.1 This report is the fifteenth monitoring report for the Borough. It is the seventh Authority's Monitoring Report (AMR) to be produced by Test Valley Borough Council, following 9 previous Annual Monitoring Reports. It covers the reporting period from 1st April 2018 to 31st March 2019.

2 Background

- 2.1 The Authority's Monitoring Report has been prepared in line with section 113 of the Localism Act (2011). Local Authorities are no longer required to submit their monitoring reports to the Secretary of State. However, the Council has a duty to continue monitoring and collecting data. The Council will continue to produce monitoring reports for the public information on an annual basis (in December). These reports will be made publically available.
- 2.2 AMRs are designed to monitor the progress in meeting the milestones set out in the Council's Local Development Scheme (LDS) and the performance of the planning policies that apply in the Borough. These are discussed in the following sections.
- 2.4 The document covers the period 1st April 2018 to 31st March 2019.

3 Monitoring of the Local Development Scheme (LDS)

- 3.1 The LDS was updated in June 2018 to set out the timetable for the production of the Gypsy and Traveller DPD and to commence work on the Next Local Plan DPD. This has altered the timing for the preparation of both documents.
- 3.2 An issues & options consultation was undertaken for the Next Local Plan between July and September 2018. The Goodworth Clatford Neighbourhood Development plan was made in March 2019. A Supplementary Planning Document on Residential Areas of Special Character was adopted in January 2019.
- 3.3 The Council's Corporate Plan 'Investing in Test Valley' 2019-2023 and beyond set an objective of investing in communities. This is being actioned through supporting Parishes to undertake neighbourhood planning and other forms of community planning, and to provide opportunities for communities to work more closely with the Council in the review of the Local Plan. The Council's new Corporate Plan can be found here:
<https://testvalley.gov.uk/aboutyourcouncil/corporatedirection/corporate-plan-for-2019-to-2023>.

4 Monitoring of the Local Plan

- 4.1 The Localism Act (2011) enables Local Authorities to choose the targets and indicators to include in their monitoring report whilst ensuring that they are prepared in accordance with relevant UK and EU legislation. Part Two of the AMR is structured to follow the Local Plan chapters for ease of reference. Within these there are a number of performance indicators which are reported. These are comprised of Core Indicators (specified by the Department for Communities and Local Government (DCLG)) and Local Indicators (identified by the Council). These are continued in the current AMR for consistency. The general themes which emerge from the indicators are set out below. Please see Appendix 1 for the list of all core indicators and the latest performance position.

Core Indicators

Housing

- 4.2 The core indicators relating to housing are the number of housing completions, the percentage of completions on previously developed land (PDL), net additional pitches (Gypsy and Traveller) and affordable housing completions.
- 4.3 In 2018/19, 809 dwellings were completed in Test Valley, 560 in Northern Test Valley (NTV) and 249 in Southern Test Valley (STV). Overall housing completions have increased this year compared to 2017/18. There were 793 dwellings completed in Test Valley in 2018/19 with 599 (a decrease) in NTV and 194 (an increase) in STV. The 2018/19 figures are above the annual average housing requirement as set out in the Local Plan.

Business Development

- 4.4 The core indicators regarding business development assess the amount of land developed for employment uses, the amount which is on previously developed land, and the amount of land available (i.e. that with permission).
- 4.5 During the reporting period, 5,235m² of employment floor space was completed, which was lower than the previous reporting period. Of this development, 39.9% was on previously developed land; this figure is higher than last year's total of 39.7%.
- 4.6 There are 70.89 net hectares of available employment land in the Borough, an increase from 63.38 hectares in the last AMR.

Environmental Quality

- 4.7 The Indicators used to assess environmental quality consist of flooding, water quality, biodiversity and renewable energy.

- 4.8 There were 11 objections by the EA recorded during this reporting period due to flooding or water quality grounds, compared to 9 in 2017/18.
- 4.9 Hampshire Biodiversity Information Centre (HBIC) provides information on biodiversity change in Hampshire. Change is difficult to measure on an annual basis as variables and effects are often only identified in long term trends. The proportion of Sites of Special Scientific Interest (SSSI) considered 'favourable' or 'unfavourable (recovering)' has decreased slightly to 88.85% in 2018/19 compared to 88.86% in 2017/18. Sites categorised as 'unfavourable (declining)' remained at 0.94% as the previous reporting year.
- 4.10 Building Control records show 1 installation of solar panels and solar thermal systems in the Borough within the reporting period, this is 2 fewer than the number of installations in 2017/18.

Local Indicators

Public Open Space

- 4.11 The Council has received £58,841 in financial contribution towards future provision of public open space, a decrease from £823,508 received in 2017/18, reflecting a change in the way contributions are secured and the development coming forward.
- 4.12 This year £102,638.42 was paid out to Parish Councils for the provision of public open space projects, compared to £161,303.18 in the previous reporting year.

Waste

- 4.13 The percentage of household recycling in the Borough has decreased from 35% to 34.5%.

Primary Shopping Areas

- 4.14 The AMR monitors the use of units within the Primary Shopping Areas of Andover and Romsey Town Centres.
- 4.15 In the Andover Primary Shopping Area, the number of vacant units has increased from 20 in October 2018 to 25 in October 2019. The monitoring takes place annually in May and October. This data is therefore taken outside of the reporting period, however it is included as it offers the most up to date data.
- 4.16 The shop frontage monitoring reveals that the percentage of non-A1 uses (including A2: Financial & Professional Services, A3: Restaurants & Cafés, A4: Drinking Establishments and A5: Hot Food Takeaways) in the Andover Primary Shopping Area exceeded the Local Plan target.

- 4.17 In the Romsey Primary Shopping Area, the number of vacant units increased from 7 in October 2018 to 8 in October 2019.
- 4.18 Shop frontage monitoring reveals that the percentage of non-A1 uses remains above the Local Plan target.

Stockbridge Local Centre

- 4.19 Although Stockbridge Local Centre is not defined as a primary shopping area, it has been included in the AMR since 2016, reflecting a specific policy (LE15) in the Adopted Local Plan (2016). Stockbridge was included reflecting its position in the middle of the Borough, its tourist role as well as serving a local population.
- 4.20 There were two vacant units in Stockbridge in October 2019.
- 4.21 It is considered that the Council has performed well in terms of the number of retail units in the town centres.

5 Final Note

- 5.1 The Borough is continuing to perform well in a number of areas. Housing completions for 2018/19 have increased compared to 2017/18 and are continuing to surpass the Local Plan requirements. There has been a decrease in the amount of Public Open Space funding that was received by Parish Councils. The available employment land in the Borough has increased, relative to the previous AMR, although the employment floorspace completed was lower.

Introduction

1 Introduction & Background

- 1.1 The Test Valley AMR has been prepared in line with section 113 of the Localism Act (2011). Local Authorities are no longer required to submit their monitoring report to the Secretary of State. However, the Council has a duty to continue monitoring and collecting data. The Council will continue to produce monitoring reports for public information on an annual basis; these reports will be publically available. Part 8 of the Town and Country Planning Regulations 2012 sets out what must be covered within the AMR.
- 1.2 Local Authorities are able to choose what targets and indicators to include in their monitoring whilst ensuring that they are prepared in accordance with relevant UK and EU legislation. This report is the fifteenth monitoring report for the Borough and covers the period 1 April 2018 to 31 March 2019.
- 1.3 The Directive 2001/42/EC on the Assessment of the Effects of Certain Plans and Programmes on the Environment (known as the Strategic Environmental Assessment (SEA) Directive) states that "*Member states shall monitor the significant environmental of the implementation of plans and programmes in order, inter alia, to identify at an early stage unforeseen adverse effects, and to be able to undertake appropriate remedial action*" (Article 10.1). The Authority Monitoring Report provides an important mechanism of providing this information in accordance with the SEA Directive.
- 1.4 The key role of the AMR is to assess the performance of the Council's planning policies and the implementation of its Local Development Scheme (a timetable setting out the milestones involved in producing the Local Development Framework). The Council's LDS is available online: <http://www.testvalley.gov.uk/planning-and-building/planningpolicy/lfs>
- 1.5 The AMR provides a monitoring framework and a single source of key information which will help inform the development of new policies to be included in the Local Plan. It is intended to inform discussions to be held with key organisations and the public with respect to the scope and nature of future policies. Section 12 of the Revised Local Plan sets out the approach for monitoring.
- 1.6 The AMR includes three types of indicator:
- Contextual Indicators which help describe the general context of the local authority area e.g. resident population.
 - Core Indicators were identified by the Department of Communities and Local Government (DCLG) to be reported on by all local authorities to give a consistent assessment of the impact of planning policy implementation. Whilst no longer required to report against these indications, they continue to be used to enable comparison with previous AMRs.

- Local Indicators which are identified by the Council as they are specific to the local authority to help monitor aspects of local planning policy not covered by the core output indicators.
- 1.7 Although the requirement to produce AMRs has changed, the Council has retained the indicators used in previous AMRs in order to identify long term trends.

2 Format of the Report

- 2.1 As set out in Section 1, the AMR provided information on the delivery of the Local Development Scheme and the performance of the Council's policies (Section 4). In considering the councils policies, the AMR is formatted using the chapter headings of the Revised Local Plan.
- 2.2 A Glossary of Terms used in the AMR is provided at the start of this report.
- 2.3 The Core Output Indicators are highlighted in bold and italics and they are set out within the section of the report that relates to the most relevant Local Plan chapter. The Core Indicators are labelled 'C(number)' and the Local Output Indicators are also presented in bold and italicised text and are labelled 'L(number)'.
- 2.4 The AMR reports the position as at 31st March each year; however, the document is usually published in December to allow for collation of the results and production of the report. During this 9 month period a number of significant developments may have occurred such as in terms of LDF development and/or progression of major sites. Any updates that have occurred in the period from 31 March to October will be presented in a text box beneath the text for the current reporting period. The contents presented in this AMR are accurate at the time of completing this report as at December 2019.
- 2.5 In preparing this monitoring report, the Council has referred to information provided by a number of other agencies. The source of this information has been given wherever it is quoted in the report (otherwise the information comes from the Council's Planning Policy Team).

How to find out more

- 2.6 The Council continues to welcome any comments on the format and content of this report which could assist in future versions.
- 2.7 Should you have any queries or wish to make any comments please contact the Planning Policy Team:

Planning Policy
Test Valley Borough Council
Beech Hurst
Andover
Hampshire
SP10 3AJ

Tel: 01264 368000

Email: planningpolicy@testvalley.gov.uk

Website: <http://www.testvalley.gov.uk/planning-and-building/planningpolicy>

3 Test Valley Profile

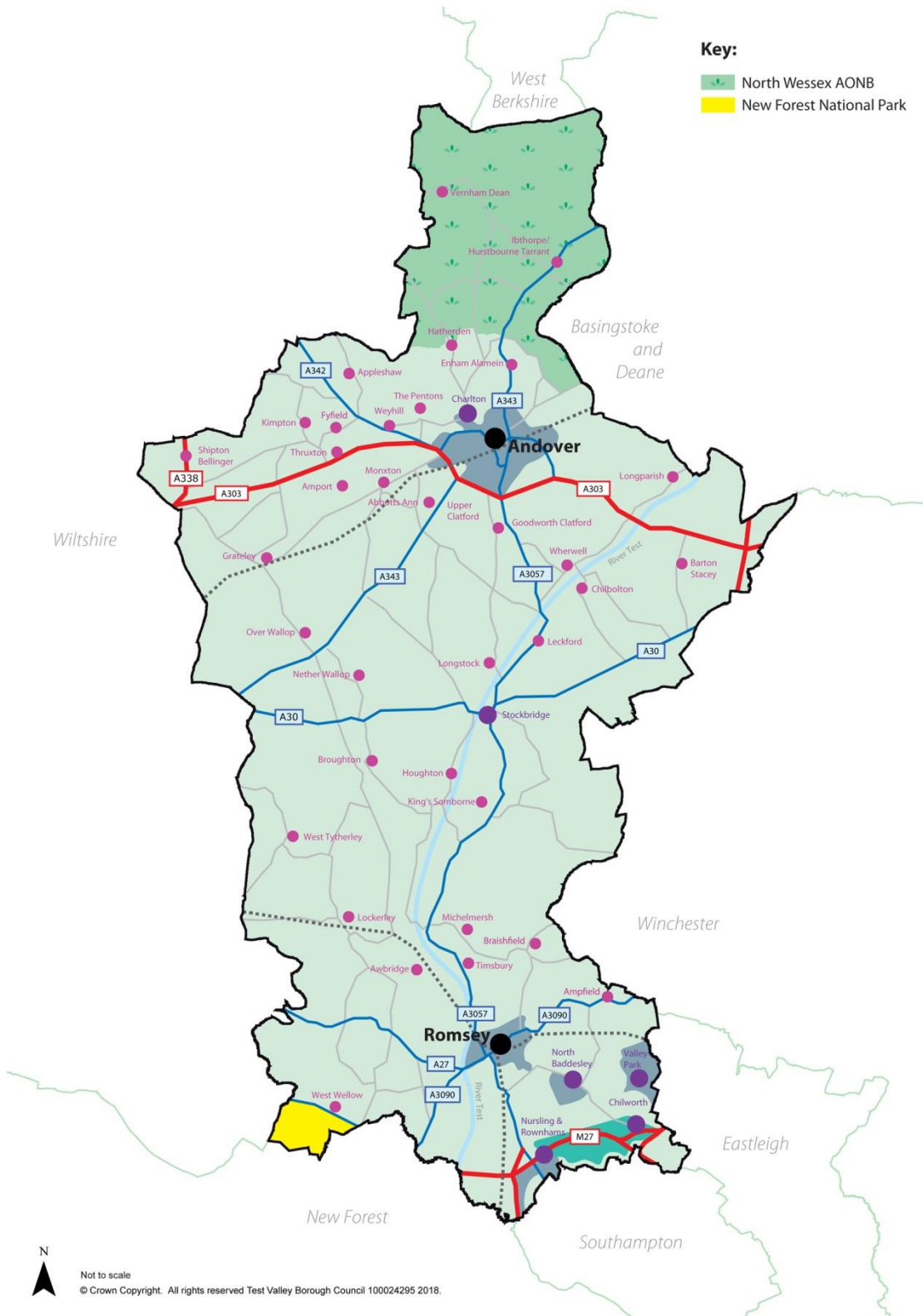
- 3.1 Test Valley Borough is located in north-west Hampshire covering 62,758 hectares (628km²) with a population of approximately 130,467¹. It is predominantly rural in character, with around 4% described as urban.
- 3.2 According to 2017 SAPF data, the population is forecast to increase by 9.6% between 2017 and 2024. Most growth is forecast in the population group aged 65 and over.
- 3.3 The population of the Borough is concentrated in the towns of Andover and Romsey, with populations of 49,952 and 15,313 respectively. The smaller settlements of North Baddesley, Valley Park, Chilworth and Nursling and Rownhams have a combined population of approximately 21,228. These are located on the edge of Southampton and Eastleigh (see Map 1). In total these settlements account for 66% of the Borough's population. The remaining population is spread across a large number of small villages in the rural part of the Borough. Stockbridge acts as a centre for a number of rural communities.
- 3.4 Much of the landscape is of a high landscape quality; the North Wessex Downs Area of Outstanding Natural Beauty (AONB) covers much of the Borough north of Andover. The New Forest National Park (formally designated in March 2005) extends into the south-west of the Borough. Through the centre of the Borough runs the River Test, one of the country's most important chalk water courses. Over 9,500 hectares of the Borough are covered by local, national or international ecological or landscape designations. The extent of these designations within the Borough is shown in Map 1.
- 3.5 The built environment is also of high quality. There are 37 designated Conservation Areas, approximately 2,362 listed buildings and 171 scheduled ancient monuments².
- 3.6 The Council also regularly produces an updated Borough Profile, drawing upon a range of data sources including the latest national census statistics. This data source has been used within this AMR. The most recent profile is available online at:

<http://www.testvalley.gov.uk/aboutyourcouncil/corporatedirection/about-test-valley-the-facts-and-figures/boroughprofile>

¹ *Small Area Population Forecast (SAPF)* (HCC, 2019)

² *The Hampshire Archaeology & Historic Buildings Record* (Hampshire County Council)

Map 1: Area of Test Valley



- 3.6 Farming is a significant part of the Borough's environment and economy. There are regular and popular farming markets throughout the year in the town centres of Romsey and Andover.
- 3.7 The overall average sale price of a house in Test Valley as of March 2019³ was £324,125 which was above the regional average of £317,830 and considerably above the England figure of £227,281. Table 1 shows the breakdown of average property prices for the different dwelling types available throughout the Borough.

Table 1: Average house prices in Test Valley

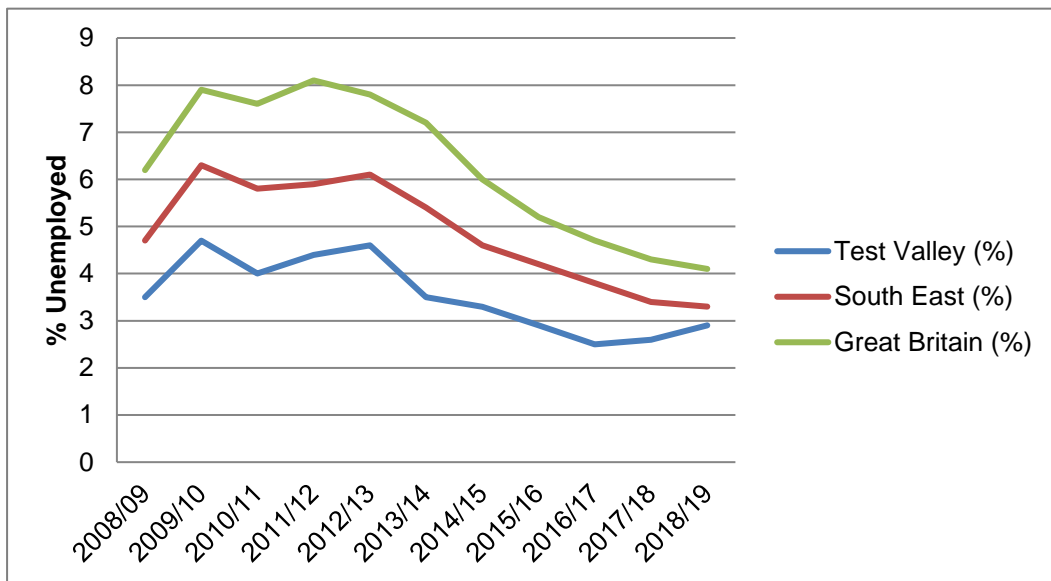
| Test Valley average property prices | |
|-------------------------------------|----------|
| All dwelling types | £324,125 |
| Detached | £509,774 |
| Semi-detached | £305,251 |
| Terrace | £248,137 |
| Flat | £175,225 |

- 3.8 The health of people in Test Valley is generally better than the England average. Estimated rates of adult physical activity are higher than the England average, with rates of early deaths from cardio-vascular diseases are also lower than the England average. While deprivation is lower than the England average there are approximately 2,000 children living in poverty. The average life expectancy is 84 for women years and 81 for men; both these figures are above the national average⁴.

³ Land Registry House Price Index, 2019 (<http://landregistry.data.gov.uk/app/ukhpi/explore>)

⁴ Public Health England, Health Profiles 2018: Test Valley (Public Health England) <https://fingertips.phe.org.uk/profile/health-profiles/data#page/1/gid/1938132696/pat/6/par/E12000008/ati/201/are/E07000093>

Figure 1: Comparison of unemployment levels between Test Valley, the South East and Great Britain (2008 – 2019)



3.9 The Borough has relatively low levels of unemployment and economic inactivity compared to the south-east region and national rates. The percentage of unemployment in Test Valley has slightly increased this reporting year⁵. Following the role out of Universal Credit this has increased the number of people counted as eligible to be looking for work than was previously recorded as Job Seekers Allowance (JSA) claimants, and therefore may have influenced this increase. More information is provided in Appendix 2, displaying unemployment levels in Test Valley (2008-2019).

⁵ Annual Population Survey (<https://www.nomisweb.co.uk/reports/lmp/la/1946157309/printable.aspx>)

Part One: Local Development Scheme and Community Infrastructure Levy Monitoring

4 Monitoring of the Local Development Scheme (LDS)

- 4.1 One of the functions of the AMR is to monitor the progress of the Council's Local Development Scheme (LDS). The LDS is a public statement of the Council's programme for the production of Development Plan Documents (DPDs). The LDS sets out the time lines for the production of documents including gathering data, consultation, examination and its adoption.
- 4.2 The Test Valley LDS applies to the Borough outside of the National Park. The New Forest National Park is responsible for the planning of the part of the Borough which lies within the Park (see Appendix 3) and will have its own LDS. Under the Planning Act 2008 there is no need for Supplementary Planning Documents (SPDs) to be included within the LDS however the Council will continue to produce SPDs when appropriate.
- 4.3 The Local Development Scheme (LDS) was approved in June 2017, with an update to the timetable for preparing planning policy documents approved in June 2018.
- 4.4 Preparation of the Next Local Plan DPD has commenced with, as the first stage, an issues and options consultation undertaken between 6 July and 14 September 2018. The LDS indicated that the next consultation stage would be a preferred options document (Regulation 18 stage) in quarter 3 of 2019. However, the preferred options consultation on the Next Local Plan was not undertaken in line with the timescales envisaged within the approved LDS. Whilst progress is being made, a number of factors have arisen which have affected the timetable, including updated advice from Natural England on the impact of nutrients from new development on the international nature conservation designation in and around the Solent.
- 4.5 An updated Sustainability Appraisal Scoping Report for the Gypsy and Traveller DPD was approved in December 2018, following consultation during October and November 2018. The evidence base for the gypsy, traveller and travelling showpeople community is being reviewed and considered in light of case law. Depending upon the outcome of this review, a decision will be made in due course as to whether to prepare a separate Gypsy and Traveller DPD, or to include provision for this community, within the next local plan.
- 4.6 There are currently 15 designated neighbourhood areas in the Borough, with 13 neighbourhood plans underway. The Goodworth Clatford Neighbourhood Plan was 'made' following the resolution of the Council on 23 January 2019 and the positive referendum on 12 March 2019.
- 4.7 Consultation was undertaken on two draft supplementary planning documents (SPD): on Affordable Housing (8 August - 11 October 2019); and a Village Design Statement for Ampfield (23 November – 21 December 2018). Both these were to replace existing SPD/SPG documents.

- 4.8 A Supplementary Planning Document on Residential Areas of Special Character was adopted in January 2019.
- 4.9 The Council has published its Corporate Plan 'Investing in Test Valley' 2019-2023 and beyond⁶. This document has highlighted that our priorities are growing the potential of: Town centres, Communities, People and The Local Environment. Within this document the Council stated that "*We will renew our key housing strategies to focus on new ways of working that will support people to build upon their strengths, to help resolve their housing issues.*" This is being actioned by working with communities and partners to help identify and deliver the supply of homes which reflects current and future housing needs.

Summary Update: April 2019 – October 2019

The preferred options consultation on the Next Local Plan was not undertaken in line with the timescales envisaged within the approved LDS. The Council is currently reviewing its future timescale for the preparation of the next Local Plan and will approve a new LDS in due course. We are continuing to update the evidence base, including working with neighbouring authorities and through the Partnership for South Hampshire (PfSH). Work is also progressing through the Andover Vision and Romsey Future initiatives, including masterplanning for Andover town centre and south of town centre, Romsey.

5 Community Infrastructure Levy (CIL)

- 5.1 The Community Infrastructure Levy (CIL) is a mechanism that allows local planning authorities to levy a charge on new development in order to contribute to the cost of infrastructure projects that are, or will be, needed to support new development.
- 5.2 Test Valley Borough Council implemented the adopted CIL Charging Schedule on 1st August 2016. The CIL Charging Schedule sets out the charge per square metre for each category of development that is liable for CIL. There are four residential charging zones across the Borough ranging from £70 to £175 per square metre of floorspace. Large Scale Retail floorspace is also charged at £180 per square metre across the Borough.
- 5.3 Section 106 remains as a way of mitigating the impact of development and co-exists with CIL but on a much smaller scale. Section 106 agreements may still be used to secure mitigation for specific impacts of a development to make development acceptable in planning terms provided that any infrastructure sought is in line with Regulation 122 of the CIL Regulations 2010 (as amended) and has not been listed on the Regulation 123 List.

⁶ <https://www.testvalley.gov.uk/aboutyourcouncil/corporatedirection/corporate-plan-for-2019-to-2023>

- 5.4 The CIL Regulations 2010 (as amended) requires that a 'meaningful proportion' of CIL receipts be passed to the local parish or town council for the area in which development took place. The proportion to be passed to the local council is 15% of the relevant CIL receipts with a maximum cap of £100 per Council Tax dwelling within the parish in each financial year. Where a Neighbourhood Development Plan (NDP) is in place the 'meaningful proportion' will rise to 25% with no maximum cap specified. Parish Councils will receive their 'meaningful proportion' of CIL in April and October each year.
- 5.5 A Charging Authority is required under Regulation 62 of the CIL Regulations 2010 (as amended) to prepare a report for any financial year in which it collects CIL. The table below sets out financial details as required by the Regulations.
- 5.6 The CIL Spending Protocol is the authority's approach to allocating CIL funds for infrastructure projects. Bids made for CIL funds for an infrastructure project undergo a technical, criteria-based assessment by officers and will be recommended to Cabinet each year. Bids for projects will be based on the CIL Regulation 123 List, although bids can be made for other projects subject to evidence of need being provided.
- 5.7 The Council accepted bids for CIL funds on 1 April 2018. In total 6 out of 8 schemes were recommended for approval, with the Council releasing £475,840.60 towards 6 schemes approved at Council on the 23rd January 2019.

Table 2: CIL financial details for the year 2018/19

| Details | £ |
|--|--------------|
| Total CIL Receipts for 2018/19 | 1,086,537.87 |
| Expenditure on infrastructure | 50,841,00 |
| Amount of CIL applied for to repay money borrowed and items of infrastructure funded | 0.00 |
| Amount of CIL applied to Administrative Expenditure | 59,944.80 |
| Amount of CIL passed to a Town/Parish Council | 158,095.60 |
| Total CIL Expenditure 2018/19 | 268,288.85 |
| Amount of CIL Receipts Retained at 31/03/2019 | 1,354,862.72 |

Summary Update: April 2019 – November 2019

CIL Spending Protocol

The Council will pass 15% of the total CIL receipts to Parish Councils for development that has occurred in their parish in April and October each year. The Council accepted bids for CIL funds between 1st April and 30th June 2019. A total of 9 bids were received and 8 were recommended for approval, the release of £607,495 towards these 8 schemes was approved at Council on the 20th November 2019.

6 Duty to Co-operate

- 6.1 The Regulations with regard to Duty to Co-operate came into force on 6 April 2012. In recognition of Part 8, Regulation 34 (6) the Council has jointly worked with the Partnership for South Hampshire (PfSH), neighbouring authorities and authorities across Hampshire on evidence based studies in support of Development Plan Documents and Supplementary Planning Documents. During 2018/19 these included: an Integrated Water Management Study (IWMS) and an Air Quality Impact Assessment. PfSH has commended the preparation of an updated evidence base to inform a new statement of Common Ground (SOCG) to supersede its Spatial Position Statement. The Council is also working with neighbouring authorities on strategic priorities.
- 6.2 PfSH also considers and makes formal comments on individual authorities' Development Plan Documents. A PfSH protocol is now in place; representations are prepared by the PfSH Planning Officers Group, are seen by Members of the Housing and Planning Delivery Panel, before being signed-off by the Joint Committee Chairman (following consideration by the Joint Committee if necessary). Joint working through PfSH is undertaken in the context of the PfSH Spatial Position Statement (PfSH SPS) prepared to inform future Local Plans.
- 6.3 As part of the Hampshire and Isle of Wight Local Government Association (HIOW) there is an established structure of meetings at a chief planning officer level (Hampshire and Isle of Wight Planning Officers group – HIPOG). There are also three main sub groups that support HIPOG:
- Development Control Practitioners Group
 - Planning Research Liaison Group (PRLG)
 - Development Plan Group (DP Group)
- 6.4 The Council is a member of these groups and attends meetings during the year.
- 6.5 The Council is also working with a group of neighbouring local authorities and other organisations to update evidence on recreational disturbance on the New Forest international nature conservation designations.

7 New Forest National Park Authority

- 7.1 The New Forest National Park was established on 1 March 2005. The National Park Authority (NPA) assumed full responsibility for planning matters within the National Park boundary on 1 April 2006 and the AMR reflects this status. A map identifying the small area of the Borough that, for planning matters, is part of the National Park can be found in Appendix 3 (also see Map 1 for wider context). The NPA is responsible for annual reporting for all areas within the National Park boundary.

- 7.2 Housing completions within the Test Valley area of the National Park will continue to be reported within this AMR, although separately to those for the rest of the Borough outside of the National Park.
- 7.3 The Council is represented by one member of the NPA, whom meets regularly. Officers liaise with officers of the NPA, particularly planning officers on planning strategy/policy matters. The NPA has prepared and adopted a number of Local Development Framework (LDF) documents and a statutory Management Plan for the National Park. The Council has a duty to take account of the purposes of the National Park designation in its decision making. The Council is represented on the management plan group.

Part Two: Monitoring the Revised Local Plan (RLP)

8 Revised Test Valley Borough Local Plan 2011 - 2029

- 8.1 The Revised Local Plan for Test Valley forms the main part of the Development Plan for the Borough. The document sets out a vision and broad objectives for the future development of the Borough. It includes the core objectives which underpin the policies and proposals which form the spatial strategy. The Local Plan will guide future development within the Borough of Test Valley over the plan period 2011-2029.
- 8.2 The Local Plan draws upon other strategies of the Council, especially the Corporate Plan, and other organisations that have implications for the development and use of land. It identifies the strategic locations for housing and employment based on a settlement hierarchy. The document contains policies which are used in determining planning applications. The document sets out the boundaries for the settlement hierarchy and town centre boundaries and identifies those areas that prevent coalescence between settlements and areas of local distinctiveness. This document was subject to a sustainability appraisal to ensure that sustainable development has been promoted. Please refer to the Appendix 4 for a table identifying the saved policies from the adopted Test Valley Borough Local Plan (BLP) (2006) which were entirely replaced by the policies in the Test Valley Borough Revised Local Plan (RLP) DPD.

9 Delivering Sustainable Development

| RLP Policies (Chapter 4) | |
|---------------------------------|--|
| Policy SD1 | Presumption in Favour of Sustainable Development |

- 9.1 Delivering Sustainable Development relates to Chapter 4 of the RLP. At the centre of the Council's Spatial Strategy is the principle of sustainable development. Sustainable development is at the core of planning and in making the right decisions for current and future generations. The three elements of sustainable development are; social, economic and environmental and need to be considered jointly, not in isolation.
- 9.2 The Local Plan has been written to provide the starting point for guiding growth and creating and delivering sustainable development. This echoes the approach of Government guidance set out in the NPPF (2019) within paragraph 11. This Plan, following advice from Government includes a policy which sets out the presumption in favour of sustainable development.
- 9.3 A review of appeal decisions, involving issues surrounding the delivery of sustainable development has been undertaken.

10 Local Communities

| RLP Policies (Chapter 5) | |
|---------------------------------|--|
| Policy COM1 | Housing Provision 2011-2029 |
| Policy COM2 | Settlement Hierarchy |
| Policy COM3 | New Neighbourhood at Whitenap, Romsey |
| Policy COM4 | New Neighbourhood at Hoe Lane, North Baddesley |
| Policy COM5 | Residential Development at Park Farm, Stoneham |
| Policy COM6 | New Neighbourhood at Picket Piece, Andover |
| Policy COM6A | New Neighbourhood at Picket Twenty, Andover |
| Policy COM7 | Affordable Housing |
| Policy COM8 | Rural Exception Affordable Housing |
| Policy COM9 | Community Led Development |
| Policy COM10 | Occupational Accommodation for Rural Workers in the Countryside |
| Policy COM11 | Existing Dwellings and Ancillary Domestic Buildings in the Countryside |
| Policy COM12 | Replacement Dwellings in the Countryside |
| Policy COM13 | Gypsies, Travellers and Travelling Showpeople |
| Policy COM14 | Community Services and Facilities |
| Policy COM15 | Infrastructure |

- 10.1 The Borough is comprised of a number of settlements each with their own community identity ranging from the large towns of Andover and Romsey to small rural villages. These settlements are set in attractive countryside of a high landscape quality. The issues they both face and what helps create and sustain them are very similar one key issue being the availability of housing.
- 10.2 Through the Revised Local Plan, the Council aims to deliver new development in a sustainable way. This section assesses how the policies in chapter five of the plan are performing in making provision for new housing through the allocation of land and facilitating development within existing settlements and the countryside.

Housing Delivery

C(H1) Plan Period and Housing Targets

C(H2) Net additional dwellings

- 10.3 The data presented in the Test Valley housing trajectories, in Appendix 6 and 7 of this report for the Borough, and includes:
- Net additional dwellings in previous years
 - Net additional dwellings for the reporting year
 - Net additional dwellings in future years (projected)
 - Managed delivery target
- 10.4 Local Authorities are required to set their own housing targets. The housing trajectories include figures from 2011/12 to 2028/29 which covers the period

of the Revised Local Plan. Housing Trajectories are provided for separate housing requirements: Northern Test Valley (NTV), and Southern Test Valley (STV). Please refer to the Appendix 8 to view a map illustrating Northern Test Valley and Southern Test Valley.

Table 3: Housing completions against Revised Local Plan requirements (2011-2019)

| | STV | % of RLP requirement | NTV | % of RLP requirement | TVBC Total |
|----------------|--------------|----------------------|--------------|----------------------|--------------|
| 2011/12 | 86 | 43 | 437 | 110 | 523 |
| 2012/13 | 203 | 104 | 467 | 118 | 670 |
| 2013/14 | 183 | 94 | 359 | 91 | 542 |
| 2014/15 | 212 | 109 | 668 | 170 | 880 |
| 2015/16 | 338 | 174 | 666 | 169 | 1,004 |
| 2016/17 | 240 | 123 | 651 | 165 | 891 |
| 2017/18 | 194 | 100 | 599 | 152 | 793 |
| 2018/19 | 249 | 128 | 560 | 142 | 809 |
| Total | 1,705 | - | 4,407 | - | 6,112 |

- 10.5 In 2018/19, 809 dwellings were completed in Test Valley: 560 in NTV and 294 in STV. Overall the housing completions have increased this year compared to 2017/18. Housing completions in STV have increased by 55, however NTV have decreased by 39.
- 10.6 The annualised average for the number of dwellings to be built for the period were 394 in NTV and 194 for STV; this is a Borough wide figure of 588. When the delivery and requirement figures are compared for the reporting year, this reveals a surplus of 166 dwellings for NTV, and a surplus of 55 for STV.

Housing Land Supply

- 10.7 Paragraph 73 of the National Planning Policy Framework (NPPF) states that on an annual basis, Local Planning Authorities should identify and update the supply of specific and deliverable sites, sufficient to provide a minimum of five years' worth of housing against their housing requirements; with an additional buffer of 5%. If there has been significant under delivery of housing over the past three years, then a buffer of 20% should be applied to provide a realistic prospect of achieving the planned supply.
- 10.8 The Council undertakes frequent updates of Housing Land Supply to provide an accurate picture of the supply situation. The Council has prepared a Housing Implementation Strategy, which incorporates the latest 5 Year Housing Land Supply position as at 1st April 2019⁷, please see Appendix 5 for the housing trajectory.

⁷ <https://www.testvalley.gov.uk/planning-and-building/guidance/housing-land-supply>

Five Year Housing Land Supply: Northern Test Valley

10.9 The Housing Land Supply figure for Northern Test Valley (NTV) was 7.24 years as at 1st April 2019.

Five Year Housing Land Supply: Southern Test Valley

10.10 The Housing Land Supply figure for Southern Test Valley (STV) was 6.68 years as at 1st April 2019.

Housing Completions and Losses

Table 4: Summary of main housing gains and losses (10 or more units in reporting year)

| Address | Application Ref | Private/ Affordable | Gain | Loss |
|--|------------------------|--------------------------------|-------------|-------------|
| Land at Goch Way, Andover | 16/00872/RESN | Private | 21 | 0 |
| Land at Redbridge Lane, Nursling | 15/01763/FULLS | Mixed | 54 | 0 |
| Oxlease Farm, Cupernham Lane, Romsey | 15/03036/RESS | Private | 29 | 0 |
| Ganger Farm, Ganger Farm Lane, Romsey | 14/01090/FULLS | Mixed | 73 | 0 |
| Stanbridge Earls, Stanbridge Lane, Awbridge | 16/02967/FULLS | Private | 0 | -15 |
| Land at Picket Twenty, Andover | 16/01051/VARN | Private | 12 | 0 |
| Picket Twenty Extension site, London Road, Andover | 16/03120/FULLN | Mixed | 37 | 0 |
| Land at Picket Piece, Phase 3 East Ox Drove, Andover | 15/01377/RESN | Affordable | 16 | 0 |
| Land at Picket Piece, Phase 2 East Picket Piece, Andover | 14/01382/RESN | Mixed | 34 | 0 |
| Land at East Anton, Parcel P Smannell Road, Andover | 16/00919/RESN | Mixed | 26 | 0 |

| | | | | |
|--|---------------|-------|-----|---|
| Land at East Anton, Parcels C, D and E, Smannell Road, Andover | 16/01816/RESN | Mixed | 129 | 0 |
|--|---------------|-------|-----|---|

10.11 The table above shows that, of the large sites, there was a mixture of completions for private/open market and affordable homes by Registered Providers. In 2018/19 there was a net gain of 416ha, a decrease from 2017/18 which had 624ha. This year, there was also a decrease of 7 sites compared to 2017/18.

Table 5: Cumulative completions on strategic sites as at March 2019

| | | | | | |
|------------|------------|------------------------|-------------------------|----------------|-------------|
| Abbotswood | East Anton | Picket Piece | Picket Twenty | Redbridge Lane | Ganger Farm |
| 753 | 1,820 | 524 | 1,202 | 139 | 85 |
| | | Picket Piece Extension | Picket Twenty Extension | | |
| | | 81 | 45 | | |

10.12 There has been an increase in cumulative completions from 3,995 in 2017/18 to 4,649 in 2018/19. Every strategic site has increased in cumulative completions from last year.

Outstanding Housing Permissions

Table 6: Outstanding Housing Permissions (as at 1 April 2019)

| | Large sites (10 or more) | | | Small sites (less than 10) | | | Total |
|----------------|--------------------------|----------|--------------|----------------------------|-----------|------------|--------------|
| | Gains | Losses | Net Gains | Gains | Losses | Net Gains | Net Gains |
| NTV | 1,807 | 0 | 1,807 | 409 | 56 | 353 | 2,160 |
| STV | 1,215 | 2 | 1,213 | 104 | 13 | 91 | 1,304 |
| TV NFNP | 0 | 0 | 0 | 2 | 1 | 1 | 1 |
| Total | 3,022 | 2 | 3,020 | 515 | 70 | 445 | 3,465 |

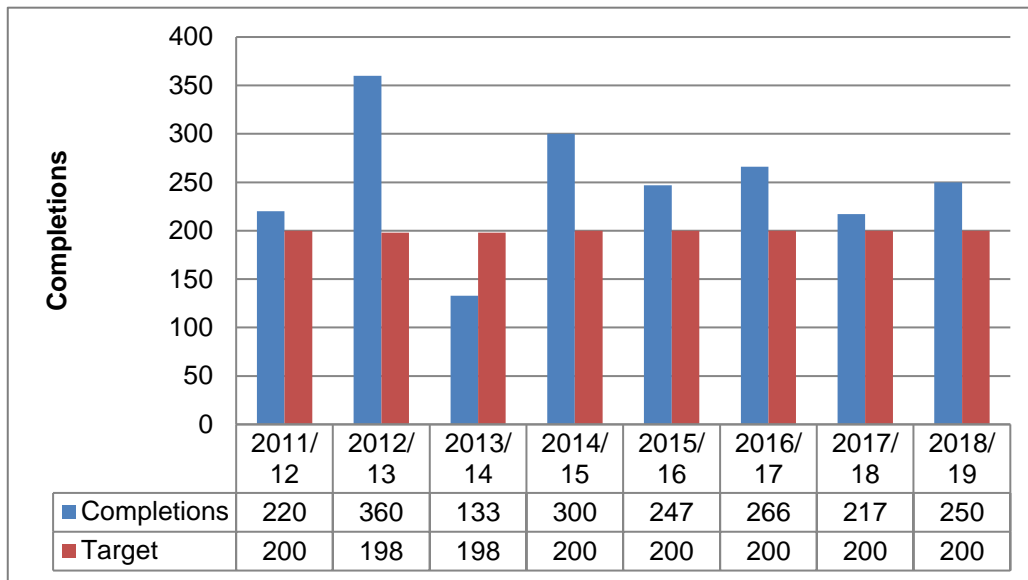
10.13 At 1st April 2019, planning permission was outstanding for 3,465 net additional dwellings (823 less than the previous reporting period). 2,160 of these permissions were within NTV (down 658 from 2017/18) and 1,304 in STV (down 166 from 2017/18).

Affordable Housing

C(H5) Gross Affordable Housing Completions L2 Deliver 200 affordable dwellings per year

10.14 A significant proportion of affordable housing provision has been provided as part of the Borough's New Neighbourhoods developments at East Anton, Picket Piece and Picket Twenty in Andover, as well as Abbotswood, Romsey. The Council has secured a significant level of affordable housing as part of these schemes.

Figure 2: Affordable Housing Completions (2011-2019)

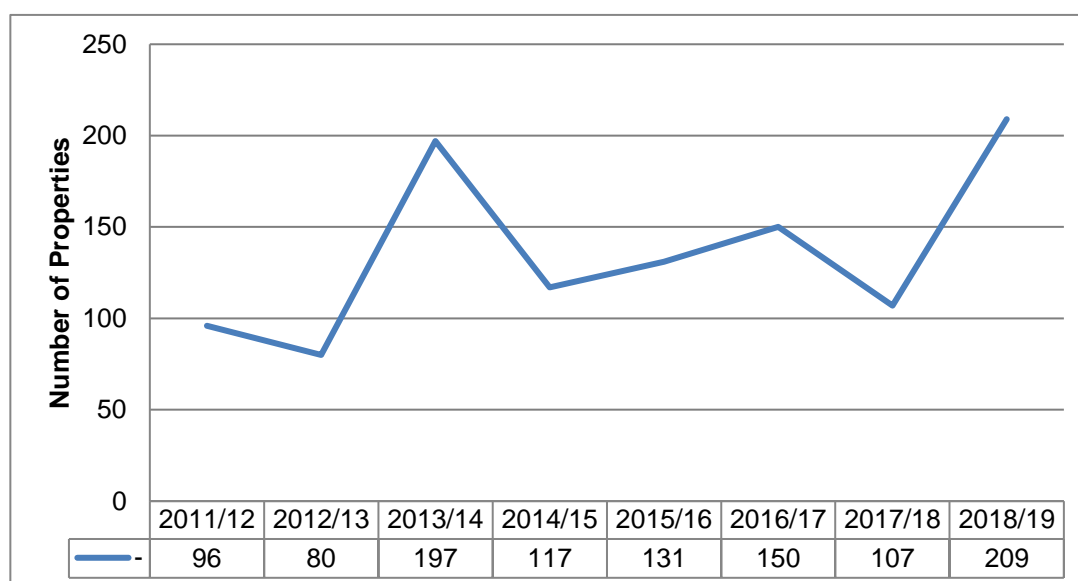


10.15 For the period 2018/19, a total of 250 affordable homes were delivered in the Borough as recorded by the Council's Housing and Environmental Health Service. This is an increase from the 217 that were delivered in the last reporting year, but is once again higher than the annual target of 200 affordable homes.

10.16 Affordable housing figures vary from those provided by Hampshire County Council, whom monitor the completions of new build affordable homes only.

Empty Properties

Figure 3: Number of empty properties brought back into use in Test Valley (2011-2019)



10.17 The Council has an Empty Property Strategy (part of the Housing Strategy available from Housing and Environmental Health Service) which sets out the Council's plans for bringing empty properties back into use to help address housing need. During the reporting year, as shown in the table above, 209 empty properties have been brought back into use. This is an increase from the 107 properties which were brought back into use in the previous year 2017/18.

10.18 Previously the AMR assessed empty properties that had been empty for six months or less. These properties are known as transactional empty properties and tend to be the result of a change in tenant or ownership. The vast majority of all empty properties are empty for less than six months and therefore considered transactional empty properties. A property does not have to be used all the time to be classed as occupied e.g. a second home, holiday home or property with pending planning permission. The empty property strategy is in the process of being updated and the council's policy will become primarily concerned with long term empty properties (properties that have been empty for longer than two years). Following the new definition of empty properties, there have been 50 empty properties in Test Valley for 2 years or more.

New Homes Bonus

10.19 The New Home Bonus began in April 2011 and is a financial allocation from Government to Local Authorities based on the increases in council tax. These increases are based on new developments, conversions and long term empty properties brought back into use. The bonus will match fund the additional council tax raised for new homes and empty properties brought back into use, with an additional amount for affordable homes, for the following six years.

10.20 The 2019/20 grant income (using changes in the tax base/delivery of homes between October 2017 and October 2018), was based on 745, homes of which 726 were new properties and 19 were empty properties brought back into use; and 211 affordable units.

Table 7: New Homes Bonus (2012-2020)

| | Affordable Homes Premium | Main Grant | Other Grants | Total Grant |
|--|---------------------------------|-------------------|---------------------|--------------------|
| 2019/20 | £59,080 | £741,484 | £2,987,617 | £3,788,181 |
| 2018/19 | £33,040 | £741,349 | £3,062,222 | £3,836,661 |
| 2017/18 | £46,200 | £946,314 | £3,923,564 | £4,916,078 |
| 2016/17 | £90,160 | £1,180,554 | £3,522,237 | £4,792,951 |
| 2015/16 | £41,720 | £807,324 | £2,723,193 | £3,572,237 |
| 2014/15 | £1,065,158 | £907,518 | £1,658,035 | £2,723,193 |
| 2013/14 | £61,320 | £727,328 | £17,633 | £806,281 |
| 2012/13 | * | * | * | £869,400 |
| Cumulative Total | | | | £25,714,782 |
| *prior to 2013/14, data was not broken down into the affordable homes premium and main grant | | | | |

10.21 The total grant receivable for 2019/20 is £800,564. This comprises of £59,080 Affordable Homes Premium (211 properties x £350 x 80%) and £741,484 as the main grant. Taking into account the previous years' grant awards, Test Valley Borough Council will receive a total of £3,788,181 in New Homes Bonus in 2019/20.

Self-Build & Custom Housebuilding

10.23 Under the Self-build and Custom Housebuilding Act, the Council has a duty to keep a register of individuals and associations of individuals who are seeking to acquire serviced plots of land in the Borough, in order to build houses for the individuals to occupy as homes.

10.24 Self-build and custom housebuilding registers provide information on the demand for self-build and custom housebuilding in the Borough, which can support development opportunities for this type of housebuilding by increasing awareness of the demand amongst landowners, builders and developers.

10.25 Between 1st April 2018 and 31st March 2019 there were 29 valid requests by individuals and associations of individuals to be added to the Test Valley Self-Build Register.

10.26 The preferences of those on the register are as follows:

- Generally plots of 0.25+ acres are being sought;
- Plots are sought for individual, predominantly detached dwellings
- Plots are generally sought within semi-rural or rural areas, within relatively close proximity to Romsey or Andover, or other villages within the Borough.

Dwellings on Previously Developed Land

10.27 The Revised Local Plan does not include a specific target with regard to the percentage of dwellings to be provided on Previously Developed Land (PDL). The strategic housing requirement for the Borough involves significant development taking place on greenfield sites.

C(H3) Percentage of new and converted dwellings on Previously Developed Land

Figure 4: C(H3) Percentage of new and converted dwellings on Previously Developed Land (2011-2019)

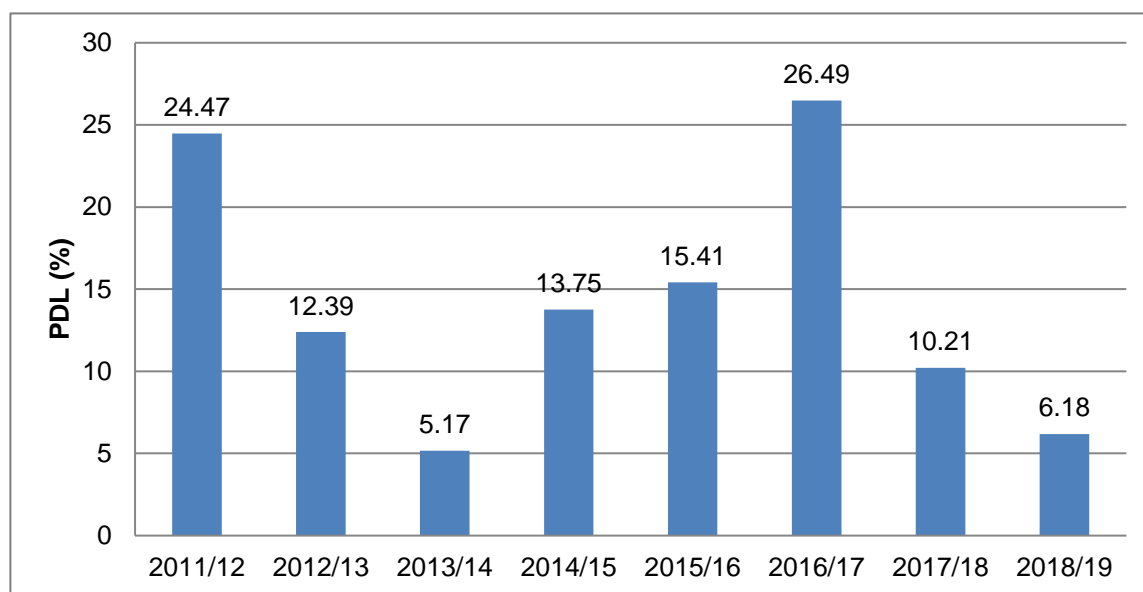


Table 8: Number of new and converted dwellings on Previously Developed Land

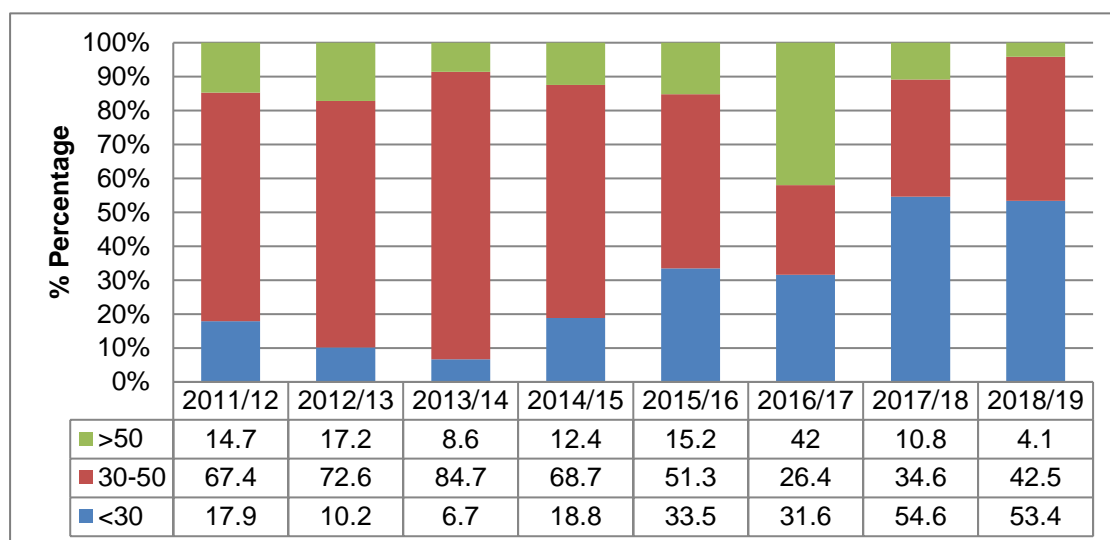
| Year | 2011/12 | 2012/13 | 2013/14 | 2014/15 | 2015/16 | 2016/17 | 2017/18 | 2018/19 |
|-----------------------|---------|---------|---------|---------|---------|---------|---------|---------|
| Net Gain (PDL) | 128 | 83 | 28 | 121 | 152 | 236 | 81 | 50 |
| Net Gain (ALL) | 523 | 670 | 542 | 880 | 1004 | 891 | 793 | 809 |

10.28 The figures above display that since 2011/12 the number of dwellings on PDL has fluctuated. The total number of dwellings and percentage of previously developed land was at its lowest in 2013/14, since then the figures have started to increase again. However the figures for the 2018/19 period have decreased compared to previous years and is the second lowest percentage.

New dwellings by Density

L9 Percentage of new dwellings by Density

Figure 5: L9 Percentage of new dwellings by density (2 or more dwellings) (2011-2019)



10.27 Figure 5 provides the details for housing density. The data is split into 3 bands: less than 30, between 30 and 50, and more than 50 dwellings per hectare (dph). In the raw data, provided by Hampshire County Council for all of the individual sites, the density figures are a mix of net and gross. Most of the densities below 30ha in the raw data were for single dwellings and the remaining data was amended to reflect this. The percentage of dwellings at a density of 50+dph is the lowest it's been in ten years. Please refer to the Appendix 9 to view a table illustrating the Percentage of new dwellings by density (2 or more dwellings) (2011-2019).

Sites for Gypsies, Travellers and Travelling Showpeople

10.28 The Gypsy, Traveller and Travelling Showpeople groups should have access to appropriate accommodation to meet their needs, therefore sufficient sites are identified. These sites can be either in the defined settlement boundary or within the countryside provided that they are in locations where facilities and services, such as schools and local shops, are accessible.

10.29 Following government guidance emphasising the need for local authorities to co-operate, the Council joined with ten other authorities in Hampshire to commission a Gypsy & Traveller Accommodation Assessment (GTAA, 2017), in order to quantify the level of need for traveller sites in the area.

C(H4) Net Additional Pitches (Gypsy and Traveller)

- 10.30 There were no permissions granted for Gypsy and Traveller sites between 1st April 2018 and 31st March 2019.
- 10.31 The following sites received planning permission for Travelling Showpeople sites during the reporting period:
- Two Showman's plots, Land to the South West of Halls Wood, Gardeners Lane, East Wellow (17/02086/FULLS) permanent permission granted 26.04.2018
 - Site for travelling showpeople, extension of the adjacent existing site, Land Adjacent Forest Edge Park, Gardeners Lane, East Wellow (18/0799/FULLS) permanent permission granted 14/06/2018
- 10.32 There weren't any sites that were refused planning permission between 1st April 2018 and 31st March 2019 for both Gypsy and Traveller and Travelling Showpeople sites.

Design Quality***C(H6) Housing Quality Building for Life Assessments***

- 10.33 Building for Life 12 Criteria is an indicator which measures design quality of new housing developments. Building for Life is led by the Design Council, Design for Homes and the Home Builders' Federation.
- 10.34 None of the supporting documents for any of the major applications received by the Council included detailed assessments in relation to the Building for Life criteria. In the absence of this, the Council do not currently wish to make that assessment for each site without the acceptance or confirmation of the applicant.
- 10.35 For further information on Building for Life, please see the Design Council website:
https://www.designcouncil.org.uk/sites/default/files/asset/document/Building%20for%20Life%2012_0.pdf

11 Local Economy

| RLP Policies (Chapter 6) | |
|---------------------------------|---|
| Policy LE1 | University of Southampton Science Park |
| Policy LE2 | South Benham Campus, University of Southampton Science Park |
| Policy LE3 | Land at Whitenap, Romsey |
| Policy LE4 | Land South of Brownhill Way, Nursling |
| Policy LE5 | Land at Bargain Farm, Nursling |
| Policy LE6 | Land at Adanac Park, Nursling |
| Policy LE7 | Nursling Estate |
| Policy LE8 | Extension to Walworth Business Park |
| Policy LE9 | Andover Airfield Business Park |
| Policy LE10 | Retention of Employment Land and Strategic Employment Sites |
| Policy LE11 | Main Town Centre Uses |
| Policy LE12 | Ground Floor Uses in Romsey |
| Policy LE13 | Ground Floor Uses in Andover |
| Policy LE14 | Mixed Development at George Yard/Black Swan Yard |
| Policy LE15 | Stockbridge Local Centre |
| Policy LE16 | Re-Use of Buildings in the Countryside |
| Policy LE17 | Employment Sites in the Countryside |
| Policy LE18 | Tourism |

- 11.1 Test Valley is a prosperous and attractive place which is seen as a 'pull factor' to establish a workforce and attract those to work in a quality environment.
- 11.2 The existing employment sites make a major contribution towards the growth, strength and diversity of the local economy and provide a significant proportion of job opportunities. It is important to retain and promote a successful local economy in both the towns and rural areas of the Borough as well as providing local job opportunities.
- 11.3 The Council wants to maintain and grow a successful and healthy local economy that provides a range of employment opportunities for its residents. Its approach to addressing the economic issues of the Borough is to increase the opportunities to work and live within the Borough, to make best use of existing employment sites and to improve the range of skills available within the Borough.

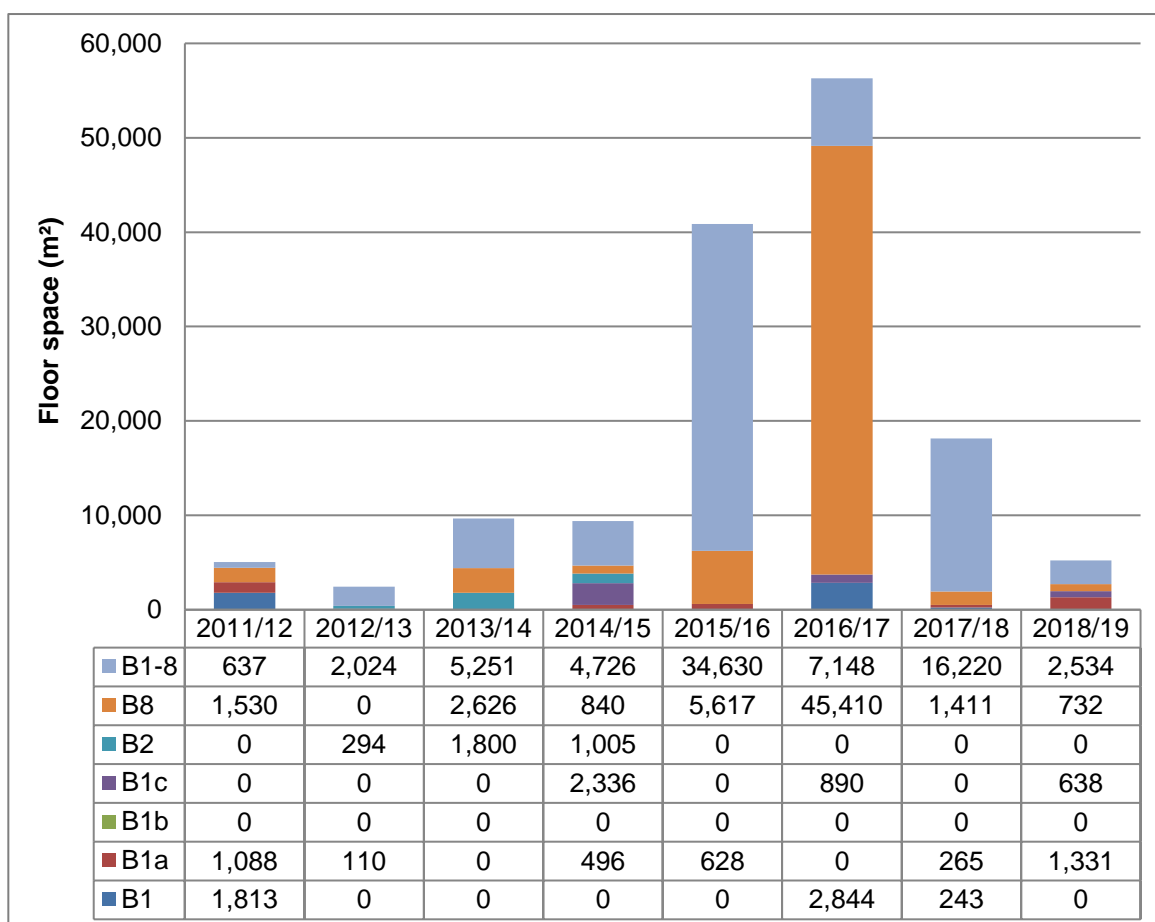
Employment Land

- 11.4 The Council's overall approach is to retain existing employment sites and encourage new employment development within settlements. New allocations are set out in the Revised Local Plan to support the economic success of the Borough.

C(BD1) Amount of floorspace developed for employment by type
C(BD2) Percentage of BD1, by type, which is on Previously Developed Land

11.5 Employment floorspace is categorised into three separate Use Classes as identified by the Use Classes Order. Class B1 is classified as Business and can include offices, research and development and light industry floorspace⁸. B2 is classified as General Industrial Floorspace and B8 as Storage and Distribution Space.

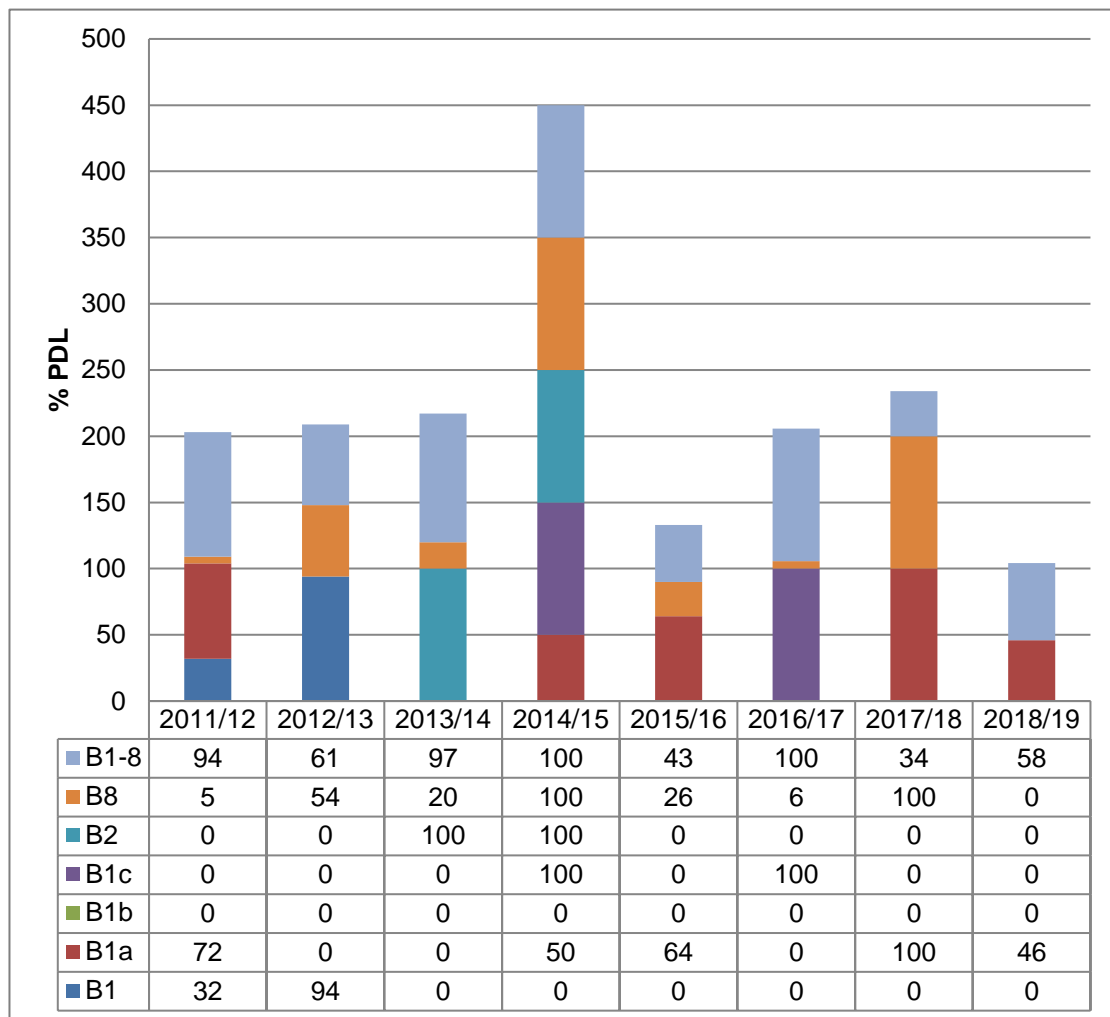
Figure 6: C(BD1) Amount of floor space developed for employment by type (2011-2019)



11.6 Figure 6 sets out the amount of floorspace completed by employment type. It does not include sites that have been developed with floorspace that measures less than 200m². As shown above, the net gains in employment floorspace within the Borough fluctuates significantly each year. This is because the Council has permitted a number of large sites that, when developed, significantly influence the annual return. As displayed above, the amount of floorspace developed for employment has lowered by 12,904m² from 18,139 m² in 2017/18 to 5,235 m² in 2018/19.

⁸ For additional information: B1a – Office other than a use within Class A2; B1b – Research and development of products or processes; B1c – For any industrial process (which can be carried out in any residential area without causing detriment to the amenity area)

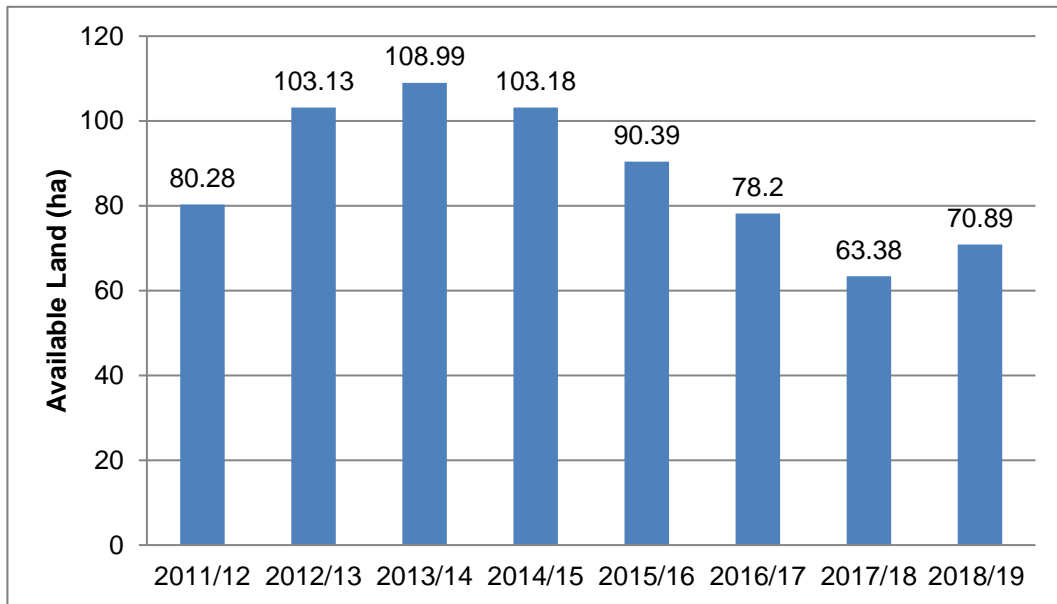
Figure 7: C(BD2) Percentage of BD1, by type, which is on Previously Developed Land (2011-2019)



11.7 As shown in Figure 7, the percentage of BD1 on previously developed land, is at its lowest compared to the last eight years, consisting of only B1-8 and B1a uses. The overall percentage on PDL was 39.9% in 2018/19, compared to 39.6% in 2017/18.

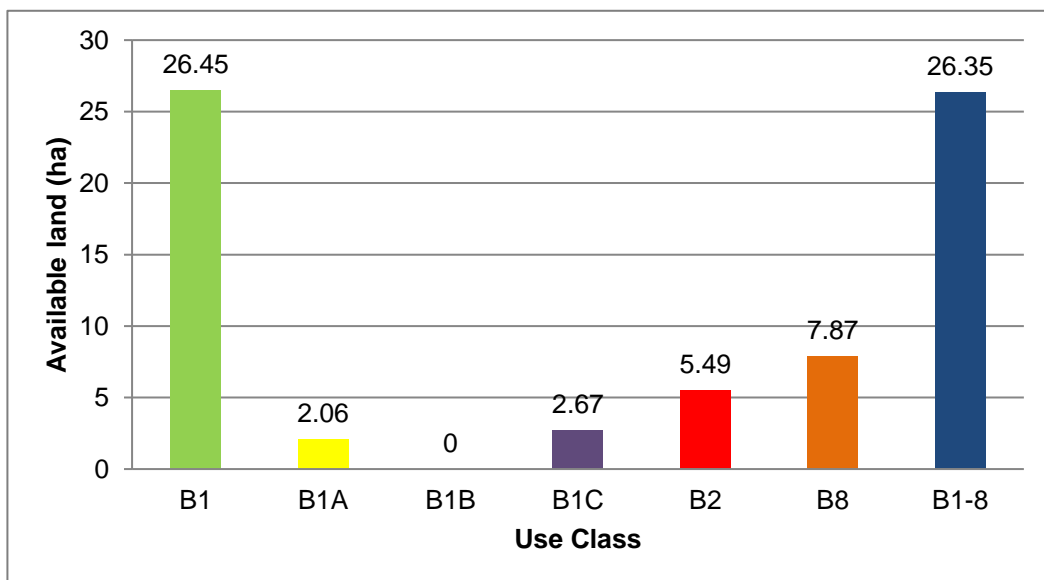
C(BD3) Employment Land Supply by Type

Figure 8: Available Employment Land (2011-2019)



11.8 As shown in figure 8, there was 70.89 net hectares of available employment land, an increase of 7.51ha.

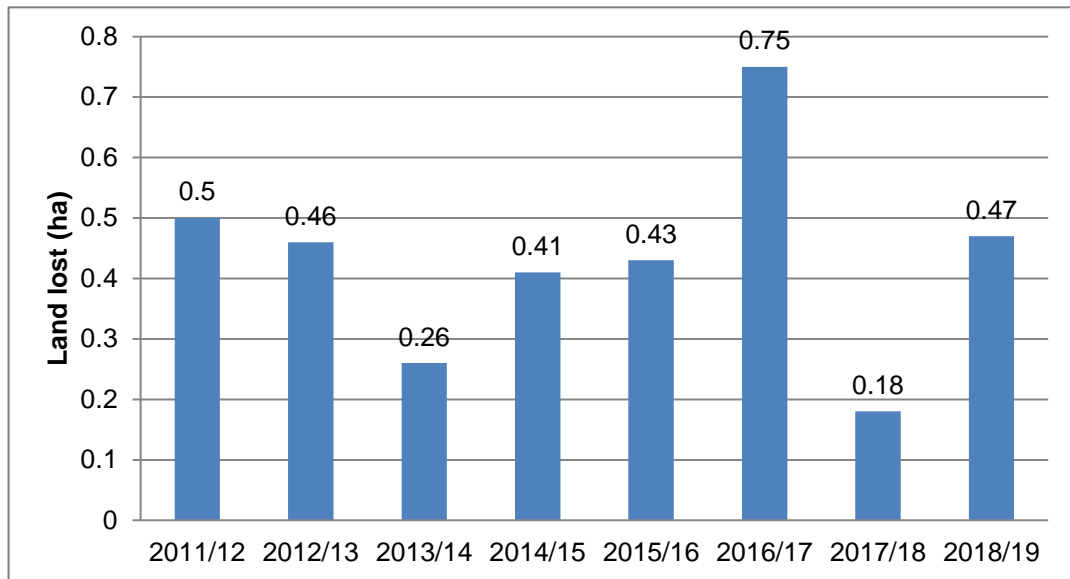
Figure 9: C(BD3) Amount of employment land available according to type (April 2018 – March 2019)



11.9 As Demonstrated in Figure 9, the largest amount of employment land available for 2018/19 is B1 Use Class. The Use Class that had the largest increase in the amount of available employment land was B1-8 which increased from 10.1ha in 2017/18 to 26.35ha in 2018/19.

L7 Losses of Employment Land

Figure 10: L7 Loss of employment land in Test Valley (2011-2019)



11.10 Figure 12 shows employment land that was lost to non-employment development from 2011/12 to 2018/19. For 2018/19, 0.47ha of employment land was lost, this related to 13 planning applications. Please see Appendix 10 for a breakdown of the applications resulting in the loss of employment land in 2018/19.

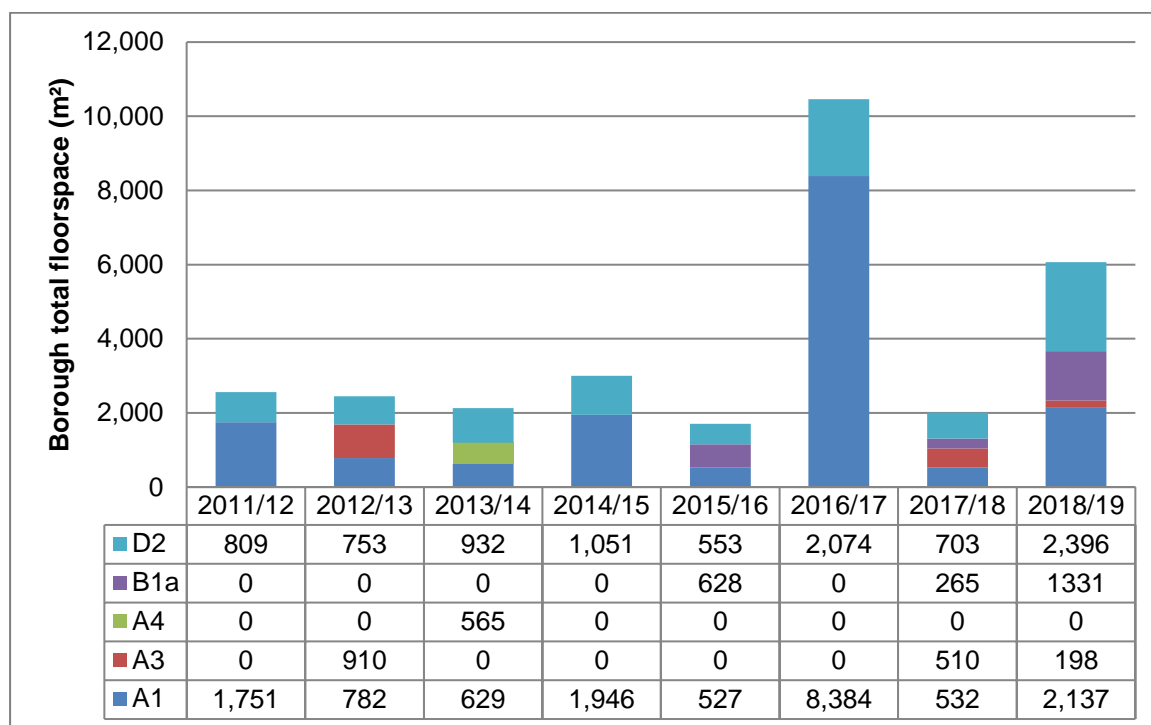
L8 Amount of employment land lost to residential development

11.12 Of the 0.47 hectares of employment land lost during this period, 0.29 hectares (62%) of it was redeveloped into residential use. This is smaller than the amount redeveloped land during the last reporting period.

Local Services

L12 Completed retail, office and leisure development in Test Valley

Figure 11: Completed retail, office and leisure development in Test Valley (2011-2019)⁹

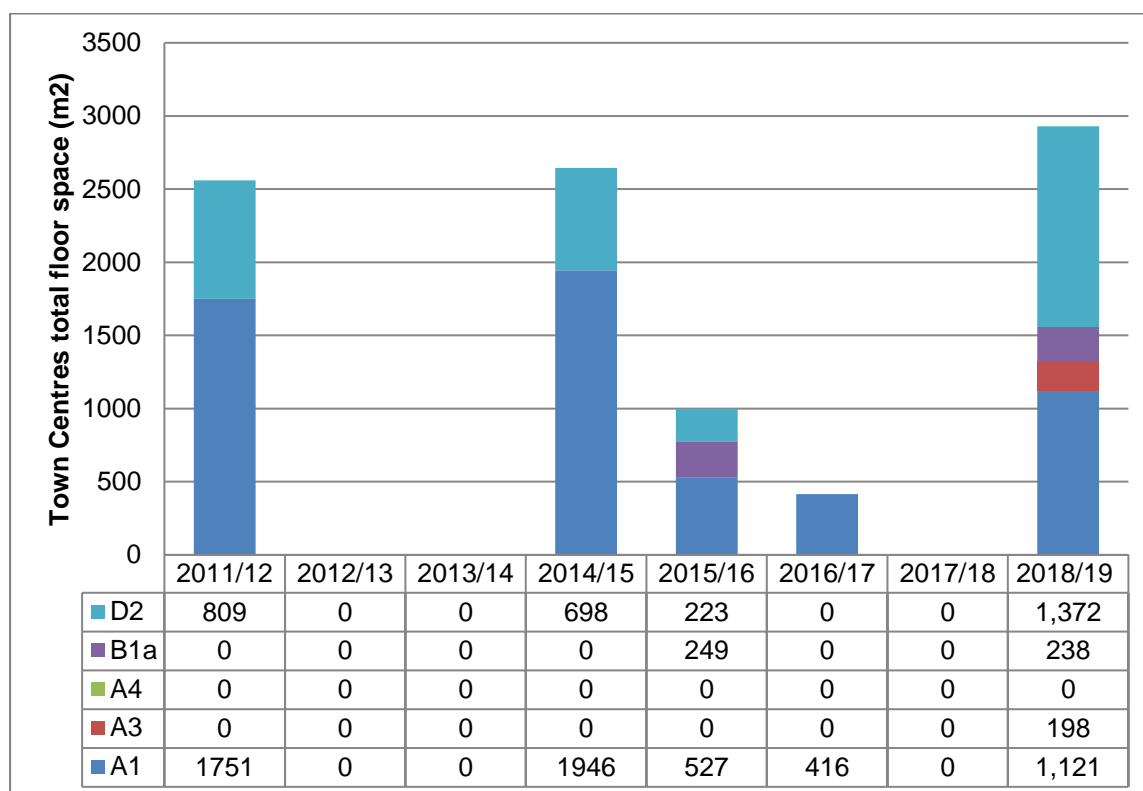


11.13 As shown in Figure 10, there has been an increase in the amount of completed retail, office and leisure development compared to the last reporting year. The total completed retail, office and leisure development for 2018/19 is 6,062 m². The biggest increases in total floor space are within shops, leisure and offices, with a decrease in restaurants and cafes.

⁹ For additional information: A1 Shops (Shops, retail warehouses, post offices, ticket and travel agencies, sale of cold food for consumption off premises, hairdressers, funeral directors, hire shops, dry cleaners, internet cafes; A3 Food and drink (Restaurants and cafes); A4 Drinking establishments (Public houses, wine bars or other drinking establishments); D2 – Assembly and leisure (Cinemas, concert halls, bingo halls, dance halls, swimming baths, skating rinks, gymnasiums, other areas for indoor and outdoor sports or recreations not involving motorised vehicles or firearms).

C(BD4) Completed retail, office and leisure development respectively in Town Centres (Romsey and Andover)

Figure 12: C(BD4) Completed retail, office and leisure development in town centres in Test Valley (2011-2019)



11.14 There has been a sharp increase in total floor space completed in town centres within Test Valley, increasing from 0m² in 2017/18 to 2,929 m² in 2018/19. The biggest increases are in leisure and retail.

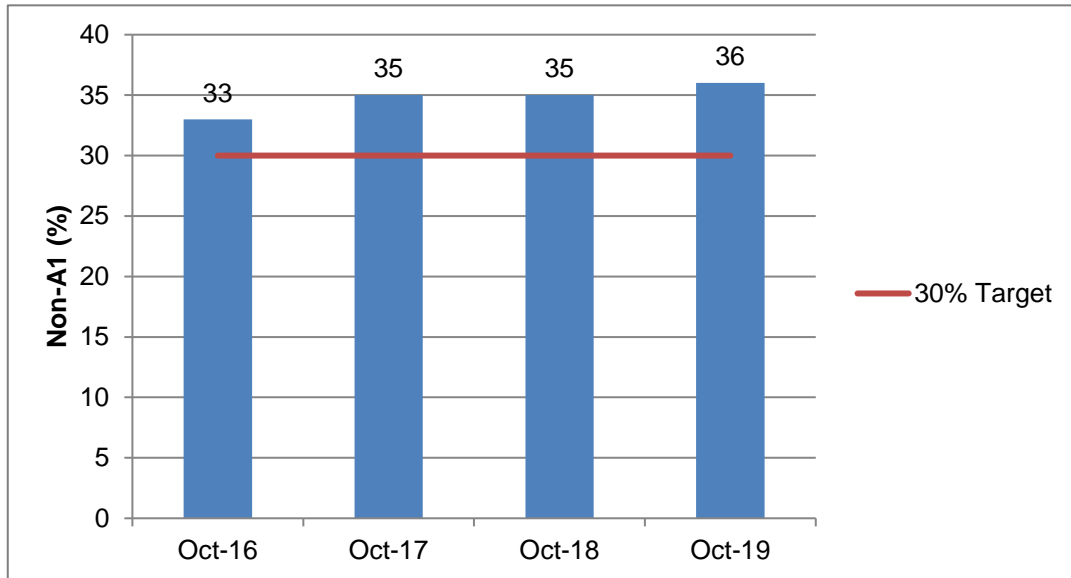
Ground Floor Uses within the Primary Shopping Areas of Andover and Romsey

11.15 Following the adoption of the Local Plan (2016), the Council no longer assesses the primary frontage area in zones, and instead evaluates the whole area. Although the figures below are showing data from outside of reporting period (April 2018-March 2019), October 2019 has been included as the latest available data.

11.16 Andover town centre serves not only the town itself but a large and mainly rural catchment area. The population of the area is approximately 70,000. In relation to convenience shopping, Andover achieves a high level of expenditure reflecting the long distances to other major centres. For comparison goods, however, the town is less successful with competition from neighbouring centres such as Basingstoke, Winchester, Salisbury and Southampton, as well as out of centre retail parks.

L4 Local Plan Shop Frontage Percentage Targets (Andover)

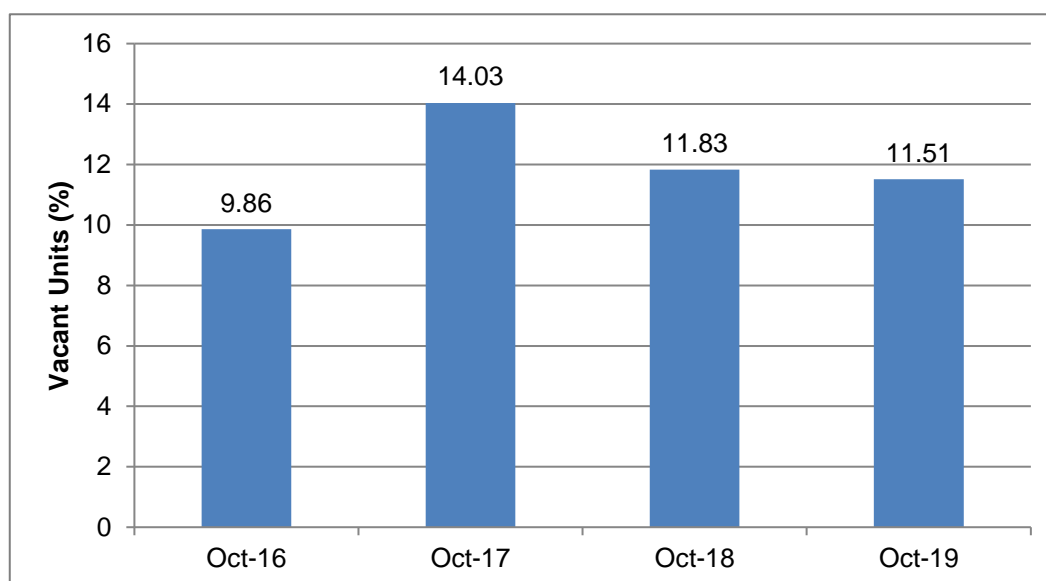
Figure 13: L4 Local Plan Shop Frontage Percentage Targets (Andover) (2016-2019)



11.17 The Council surveys shop frontages approximately every 6 months. Figure 13 compares targets for the maximum percentage of non-A1 (retail shops) in ground floor use within Andover town centre, against the actual percentage. In the primary shopping area, it is desirable to maintain a high proportion of retail (class A1 use) and restrict other uses. An over concentration of non-A1 uses may lead to less active frontages and make areas less attractive to shoppers, thus causing an impact on the existing retail units. As displayed above, the shop frontages within Andover have exceeded the target of 30%, for the last three years. For 2018/19 the primary frontage area total has increased by 1% from 35% in 2017/18 to 36% in 2018/19.

Vacant Units in Andover

Figure 14: Vacant units in Andover town centre (2016-2019)

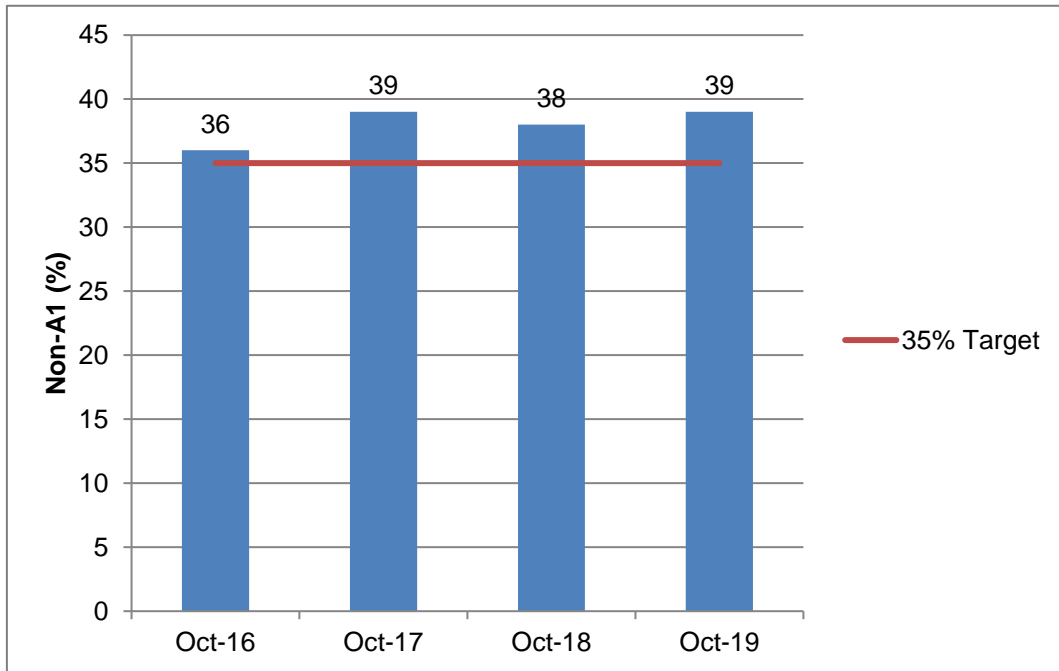


11.18 The Council regularly monitors the number of vacant units in Andover town centre, usually twice per annum. This aids in assessing the vitality of the town. The number of separate units in the town does not necessarily remain constant; some units might be sub-divided into two or more units or new units developed. This data gives a general picture of the prosperity of the shopping centre. The percentage of vacant units has decreased slightly from 2018 to 2019.

L5 Local Plan Shop Frontage Percentage Targets (Romsey)

11.19 Romsey town centre serves not only the town itself, but also the wider predominantly rural, area to the north, east and west. The population of the area is approximately 47,600. The town centre provides for a range of convenience and comparison goods although the proximity to Southampton means that there is a significant outflow of expenditure.

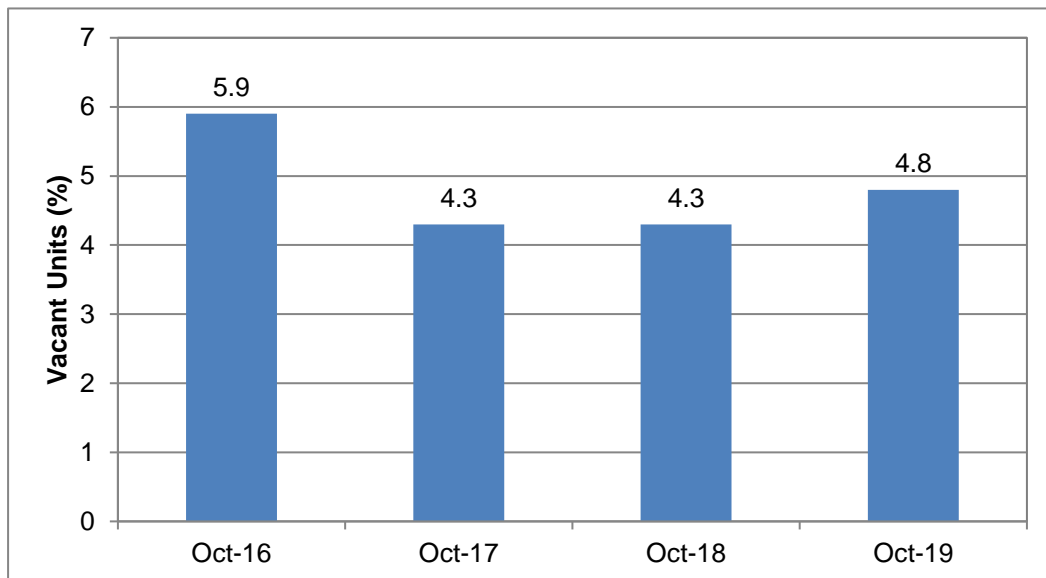
Figure 15: L5 Local Plan Shop Frontage Percentage Targets (Romsey) (2016-2019)



11.20 The percentages of shop frontages in Romsey have superseded the 35% target for the past four years. Non-A1 uses have increased by 1% in Romsey from 38% in 2018 to 39% in 2019.

Vacant Units in Romsey

Figure 16: Vacant units in Romsey town centre (2016-2019)

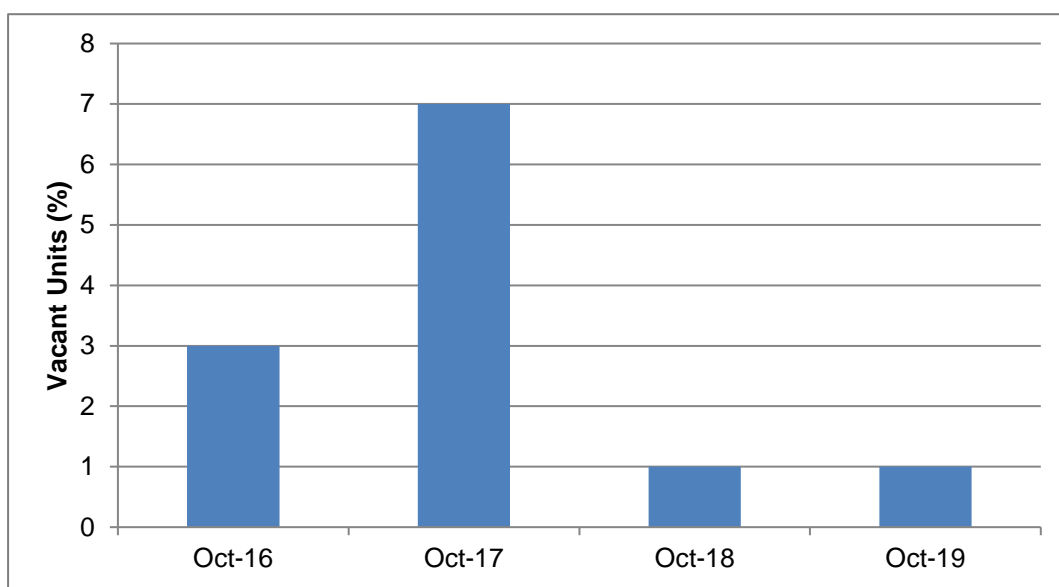


11.21 The Council regularly monitors the number of vacant units in Romsey town centre, usually twice per annum. This helps to assess the vitality of the town's

shopping centre. The number of separate units in the town does not necessarily remain constant; some units might be split into two or more units or new units developed. This data gives a general picture of the prosperity of the shopping centre. The percentage of vacant units has increased by 0.5% in Romsey, from 4.3% in 2018 to 4.8% in 2019.

Stockbridge Local Centre

Figure 17: Vacant Units in Stockbridge Local Centre (2016-2019)



11.22 Since 2016, the Council has included the monitoring of shop frontages in the Stockbridge local centre reflecting a specific policy about the Centre in the Adopted Local Plan. As of October 2019, there is 1 vacant unit, there has been no change since October 2018. There are 69% of Non-A1 shop fronts in Stockbridge.

12 Environment

| RLP Policies (Chapter 7) | |
|---------------------------------|---|
| Policy E1 | High Quality Development in the Borough |
| Policy E2 | Protect Conserve and Enhance the Landscape Character of the Borough |
| Policy E3 | Local Gaps |
| Policy E4 | Residential Areas of Special Character |
| Policy E5 | Biodiversity |
| Policy E6 | Green Infrastructure |
| Policy E7 | Water Management |
| Policy E8 | Pollution |
| Policy E9 | Heritage |

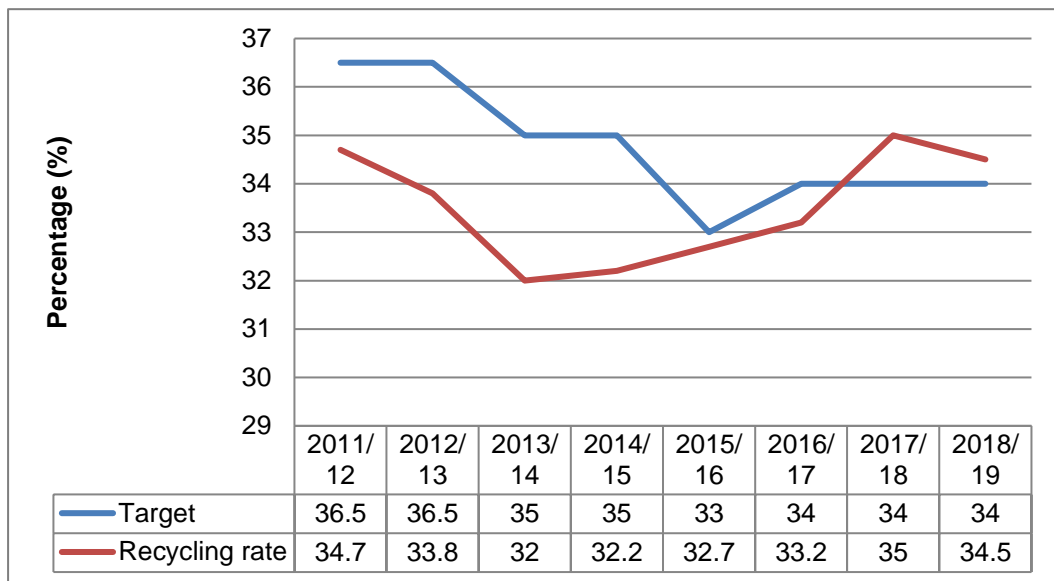
- 12.1 The protection and enhancement of the Borough's environment and its resources under the wider objective of delivering sustainable development are key issues for the Local Plan. How the natural and built environment is managed has a significant impact on the character of the Borough.
- 12.2 Approximately 92% of the Borough is classified as rural. Its high quality landscape provides an attractive setting for the settlements within the Borough and combined with good access, makes for a very desirable location. These circumstances generate significant pressure on the countryside to meet a range of demands. The Local Plan seeks to manage the cumulative impact of development on the character of the countryside over time.
- 12.3 It is not just the countryside that makes Test Valley attractive. The built environment reflects the Borough's heritage and makes a significant contribution as a place to live and work. Its heritage is a valuable asset and the conservation and enhancement of the historic environment is essential to retain the distinctiveness of the Borough's settlements.

Waste and Recycling

L6 Percentage of Waste Recycled in Test Valley

- 12.4 Hampshire County Council is the waste authority; therefore there are no specific waste policies on waste issues in the Local Plan. However, as part of the environmental context of the Borough, the AMR records recycling performance.

Figure 18: L6 Percentage of waste recycled in Test Valley (2011-2019)



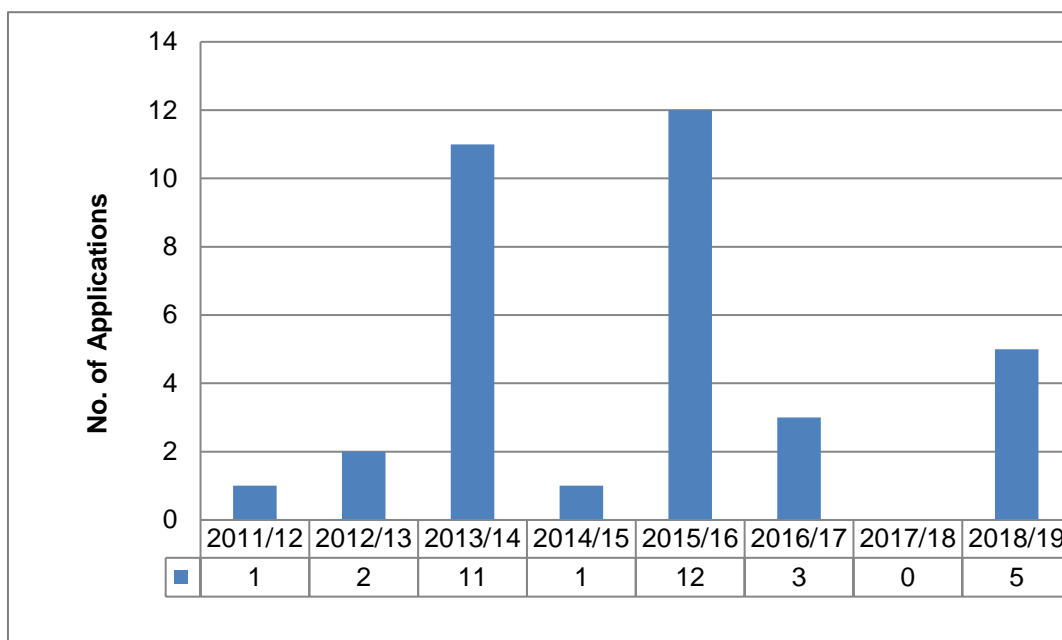
- 12.5 The recycling rate for the 2018/19 recording period within the Borough is now at 34.5% which has gone down from the previous rate of 35% for 2017/18. The recycling target for the Borough for 2018/19 was 34%, meaning the target has been surpassed for the recording period.
- 12.6 The Council's Recycling Stars campaign is continuing to grow and develop and it is hoped that this, combined with an improving economic situation and an improved garden waste collection service, will continue to increase the recycling rate in 2018/19.

Air Quality

- 12.7 Air Quality is monitored within the Borough by the Council's Housing and Environmental Health Service. To date, Test Valley Borough Council has not identified any Air Quality Management Areas (AQMAs).

L1 Number of planning applications where air quality was assessed as a material consideration

Figure 19: L1 Number of planning applications where air quality was assessed as a material consideration (2011-2019)



12.8 During the reporting period 5 planning applications were assessed where air quality was included as a material consideration.

Renewable Energy

C(E3) Renewable Energy Generation

Table 9: C(E3) Renewable Energy Generation

| Test Valley Building Control Reference | Site | Description of Works |
|--|---|--|
| CP18/03818/NAPIT | Willow Tree Farm Scallows Lane West Wellow Romsey Hampshire SO51 6DX | Install a solar thermal system Install an unvented hot water storage vessel |

12.9 Building Control records show that there was 1 application for solar panel and solar thermal system installations in the Borough within the reporting period. This is a small decrease in the number of solar panel installations, with 3 applications being submitted in 2017/18.

Flood Risk and Water Quality

C(E1) Number of planning permissions granted contrary to the advice of the Environment Agency on either flood defence grounds or water quality

Table 10: C(E1) List of applications objected to by the Environment Agency

| EA Reference | Response Date | Test Valley Reference | Development Type/ Description | Objection Reason |
|-----------------|---------------|-----------------------|--------------------------------|---|
| HA/2018/1 20330 | 11/04/2018 | 18/00873/FULLS | Residential - Major | Request for FRA/FCA |
| HA/2018/1 20332 | 02/07/2018 | 18/00922/FULLS | Offices/Light Industry - Major | Unsatisfactory FRA/FCA Submitted |
| HA/2018/1 20550 | 17/08/2018 | 18/01670/FULLN | Residential - Minor | Request for FRA/FCA |
| HA/2018/1 20623 | 19/09/2018 | 18/01999/FULLN | Residential - Minor | Request for FRA/FCA |
| HA/2018/1 20723 | 09/10/2018 | 18/02456/FULLN | Residential - Minor | Unsatisfactory FRA/FCA Submitted |
| HA/2018/1 20793 | 13/12/2018 | 18/01831/FULLN | Residential - Minor | Unsatisfactory FRA/FCA Submitted |
| HA/2018/1 20837 | 29/11/2018 | 18/02590/FULLN | Residential - Minor | Request for FRA/FCA |
| HA/2018/1 20948 | 12/12/2018 | 18/02752/FULLN | Residential - Minor | Request for FRA/FCA |
| HA/2018/1 20987 | 12/02/2019 | 18/03262/FULLN | Residential - Minor | Unsatisfactory FRA/FCA Submitted |
| HA/2019/1 21044 | 12/02/2019 | 18/03345/PDON | Residential - Minor | Request for FRA/FCA |
| HA/2019/1 21122 | 04/03/2019 | 19/00296/OUTN | Residential - Minor | Mains drainage - unacceptable risk to water quality |

12.10 During this reporting period the Environment Agency (EA) objected to eleven planning applications. This figure has three more objections received than in the previous reporting period. Work with the EA has continued with respect to developments proposed where flood risk is an issue.

- 12.11 Of these eleven objections, four were withdrawn, three were refused, one is still under consideration and the remaining three were granted planning permission after the EA were able to review additional submitted evidence, such as renewed Flood Risk Assessments.
- 12.12 The Environment Agency (EA) monitors the water quality of the rivers in the Borough. The most recent information from the EA states: "*The River Test is regarded as one of the finest chalk streams in the world with crystal clear waters supporting a rich diversity of mammal, bird, fish, invertebrate and plant communities*". The river is classified as a Site of Special Scientific Interest (SSSI) throughout its entire course. The geology of the catchment is dominated in the north by chalk, which provides the groundwater upon which the river is dependent. The major urban locations in this part of the catchment are Andover and Romsey. In contrast, the geology of the southern part of the catchment is dominated by clay, and demonstrates very different stream characteristics. Major urban areas here are concentrated along the coast, such as Southampton and Totton. It is a highly managed and modified system, with many sections divided into main river and carriers, which historically served a network of mills and water meadow systems¹⁰.

Biodiversity

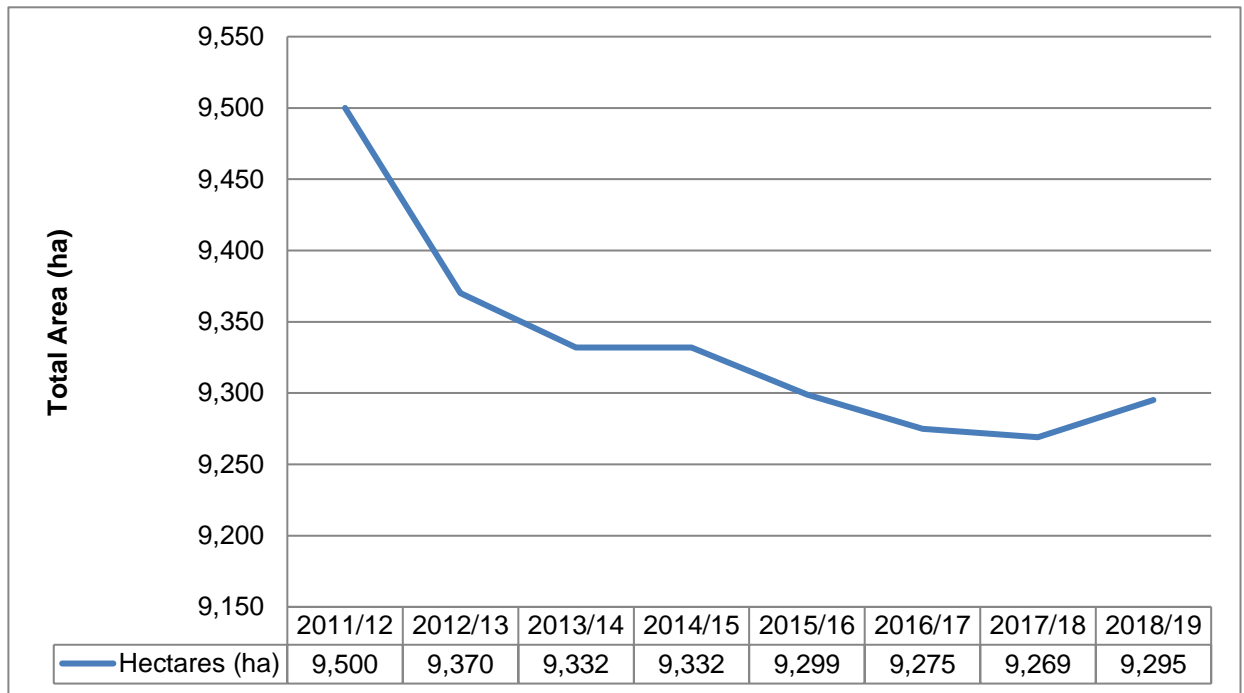
C(E2) Change in Areas of Biodiversity Importance

L14 Change in areas and populations of biodiversity importance

- 12.13 The purpose of core indicator E2 is to show losses or additions to a biodiversity habitat. Please note that some definitions have changed from former reporting periods and are therefore unable to be directly compared to previous AMR figures.
- 12.14 At the present time it is extremely difficult to report on definitive changes to habitats or species. Hampshire Biodiversity Information Centre (HBIC) is assessing its monitoring requirements to produce an annual report to help assist local authorities: *Monitoring Change in Priority Habitats, Priority Species and Designated Areas: For Local Plan Annual Monitoring Reports* (HBIC, December 2019).

¹⁰ [Catchment Data Explorer](#) Environment Agency, August 2019

Figure 20: C(E2) Change in areas of Biodiversity Importance (2011-2019)



12.15 Figure 20 demonstrates that the amount of SINC's has gone down by 205 hectares over 8 years. The graph illustrates that the amount of SINC's has been steadily decreasing over the years, showing losses to habitats.

Table 11: Extent of Biodiversity Action Plan Priority habitats in Test Valley and Hampshire (in hectares) (2011-2019)

| Priority Habitat | Comment on Status | Hants 2017/18 Total | TVBC 2011/12 | TVBC 2012/13 | TVBC 2013/14 | TVBC 2014/15 | TVBC 2015/16 | TVBC 2016/17 | TVBC 2017/18 | TVBC 2018/19 |
|--|--|---------------------|--------------|--------------|--------------|--------------|--------------|--------------|--------------|--------------|
| Grasslands | | | | | | | | | | |
| Lowland Calcareous Grassland | Comprehensive | 2,060 | 759 | 767 | 768 | 768 | 763 | 764 | 762 | 757 |
| Lowland Dry Acid Grassland | Comprehensive. Some overlap with Lowland Heath | 3,678 | 62 | 68 | 64 | 64 | 64 | 64 | 64 | 65 |
| Lowland Meadows | Comprehensive. Some overlap with Costal and Floodplain Grazing Marsh and with Woodland-Pasture and Parkland | 1,398 | 194 | 166 | 167 | 167 | 152 | 127 | 127 | 127 |
| Purple Moor Grass and Rush Pasture | Comprehensive. Some overlap with Costal and Floodplain Grazing Marsh. | 1,487 | 107 | 131 | 132 | 132 | 134 | 134 | 134 | 136 |
| Woodland, wood-pasture and parkland | | | | | | | | | | |
| Lowland Mixed Deciduous Woodland | Ongoing work as all ancient/non ancient woodland has been included yet not all has been surveyed for qualifying NVC types. | 36,257 | 6,042 | 5,879 | 5,870 | 5,870 | 5,854 | 5,853 | 5,846 | 5,852 |
| Wet Woodland | Fairly comprehensive. Areas will exist in LMDW that are qualifying types. | 2,050 | 190 | 221 | 182 | 182 | 176 | 177 | 179 | 184 |
| Wood-Pasture and Parkland | Not comprehensive. Further work needed to classify this habitat with historic parkland. | 5,545 | 105 | 105 | 105 | 105 | 105 | 105 | 105 | 105 |
| Arable, orchards and hedgerows | | | | | | | | | | |
| Arable Field Margins | Incomplete. Figures only show SINC's on arable land designated for | [81.2] | [21.5] | [26] | [23.54] | [23.54] | [22.74] | [23.5] | [23.5] | [23.5] |

| Priority Habitat | Comment on Status | Hants 2017/18 Total | TVBC 2011/12 | TVBC 2012/13 | TVBC 2013/14 | TVBC 2014/15 | TVBC 2015/16 | TVBC 2016/17 | TVBC 2017/18 | TVBC 2018/19 |
|--|--|---------------------|--------------|--------------|--------------|--------------|--------------|--------------|--------------|--------------|
| | rare arable plants. | | | | | | | | | |
| Hedgerows | No comprehensive information for Priority Hedgerows. All hedgerows mapped as linear features (km). | [16,448] | - | - | - | - | [2741] | [2741] | [2,741] | [2,741] |
| Traditional Orchards | Work to be undertaken to verify areas identified by PTES under contract to NE. | 1.0 | - | 0.36 | - | - | - | - | 0.4 | 0.4 |
| Open waters | | | | | | | | | | |
| | | | | | | | | | | |
| Eutrophic Standing Waters | No comprehensive data yet available | 45 | - | 8 | 8.3 | 8.3 | 8 | 8.3 | 8.7 | 8.7 |
| Rivers | Incomplete data. Approx. figures for Chalk Rivers only calculated from EA's River GIS layer (km) | [634] | [182] | [182] | [182] | [182] | [182] | [182] | [182] | [182] |
| Wetlands | | | | | | | | | | |
| Costal Floodplain Grazing Marsh | Further work is needed to identify all qualifying grazing marsh. Some overlap with Lowland Meadows and with Purple Moor Grass and Rush Pastures. | 9,431 | 1984 | 1928 | 1928 | 1928 | 1925 | 1925 | 1,925 | 1,941 |
| Lowland Fens | Comprehensive | 1,899 | 3 | 3 | 3 | 3 | 3 | 3 | 3 | 3 |
| Reedbeds | Not Comprehensive | 252 | 45 | 45 | 45 | 45 | 45 | 45.2 | 45.2 | 45.5 |
| Coastal | | | | | | | | | | |
| Coastal Saltmarsh | EA data partly verified | 896 | 2 | 2 | 2 | 2 | 2 | 2 | 2 | 2 |
| Coastal Sand Dunes | EA data partly verified | 47 | - | - | - | - | - | - | - | - |
| Coastal Vegetated Shingle | Comprehensive | 219 | - | - | - | - | - | - | - | - |

| Priority Habitat | Comment on Status | Hants 2017/18 Total | TVBC 2011/12 | TVBC 2012/13 | TVBC 2013/14 | TVBC 2014/15 | TVBC 2015/16 | TVBC 2016/17 | TVBC 2017/18 | TVBC 2018/19 |
|----------------------------------|---|---------------------|--------------|--------------|--------------|--------------|--------------|--------------|--------------|--------------|
| Intertidal Mudflats | EA data partly verified | 4,418 | - | - | - | - | - | - | - | - |
| Maritime Cliff and Slopes | Comprehensive | 43 | - | - | - | - | - | - | - | - |
| Saline Lagoons | Comprehensive | 54 | - | - | - | - | - | - | - | - |
| Marine | | | | | | | | | | |
| Seagrass Beds | Not comprehensive. Separate HWT data available. | 49 | - | - | - | - | - | - | - | - |

12.16 The Hampshire Biodiversity Action Plan (BAP) identifies 50 representative priority species. A total of 39 have been identified in Test Valley and are listed in Appendix 11.

Table 12: Status of Sites of Special Scientific Interest (SSSI) Designations within Test Valley (2011-2019)

| | | | 11/12 | 12/13 | 13/14 | 14/15 | 15/16 | 16/17 | 17/18 | 18/19 |
|---------------|--------------------------------|-----------|---------|---------|-------|-------|-------|-------|-------|-------|
| Status | Favourable | Area (Ha) | 450.48 | 459.5 | 448 | 447 | 453 | 452 | 452 | 452 |
| | | Area % | 24.1 | 24.6 | 23.97 | 23.9 | 24.24 | 24.2 | 24.2 | 24.2 |
| | Unfavourable Recovering | Area (Ha) | 1203.72 | 1227.98 | 1240 | 1214 | 1208 | 1208 | 1208 | 1208 |
| | | Area % | 64.4 | 65.7 | 66.35 | 64.98 | 64.64 | 64.65 | 64.65 | 64.65 |
| | Unfavourable No Change | Area (Ha) | 87.26 | 54.21 | 163 | 190 | 190 | 191 | 191 | 191 |
| | | Area % | 4.7 | 2.9 | 8.74 | 10.18 | 10.18 | 10.21 | 10.21 | 10.21 |
| | Unfavourable Declining | Area (Ha) | 127.08 | 126.86 | 18 | 18 | 18 | 18 | 18 | 18 |
| | | Area % | 6.8 | 6.8 | 0.94 | 0.94 | 0.94 | 0.94 | 0.94 | 0.94 |
| | Part Destroyed | Area (Ha) | 0 | 0 | 0 | 0 | 0 | 0 | 0 | 0 |
| | | Area % | 0 | 0 | 0 | 0 | 0 | 0 | 0 | 0 |
| | Destroyed | Area (Ha) | 0 | 0 | 0 | 0 | 0 | 0 | 0 | 0 |
| | | Area % | 0 | 0 | 0 | 0 | 0 | 0 | 0 | 0 |
| | Total | Area (Ha) | 1868.54 | 1868.54 | 1869 | 1869 | 1869 | 1868 | 1869 | 1869 |

12.17 The latest available data on the condition of the Borough's SSSIs in the Borough is shown in Table 14. As at March 2019, 88.85% of SSSIs in Test

Valley were within the top two categories. This is a slight decrease from the 88.86% as was reported during the previous period.

Local Biodiversity Action Plan (LBAP)

12.18 Initiatives delivering in 2018/19 that met the LBAP requirements are:

Test Valley Dormouse Project

12.19 Working in partnership with Hampshire Dormouse Group (HDG), the Woodland Trust and People's Trust for Endangered Species (PTES) to map the distribution of this species across the north of Test Valley.

12.20 The aim of the project is to continue the partnership with landowners to adopt dormouse friendly management techniques and to improve linkages through hedgerow planting and restoration. Greater connectivity and a well-managed wooded habitat within Northern Test Valley, will allow a healthy population of dormice to thrive.

12.21 The project area has approximately 2,235 ha of woodland, much of which is small and fragmented. Through the creation of natural pathways, the project, with the support the local landowners, hopes to create a stronger habitat network which will support existing and future populations. To date:

- 25.5km of hedgerow and 24 woodlands have been assessed to identify potential for restoration of dormice;
- Landscape features were digitised to identify connectivity between suitable linear features and woodland areas; and
- An event was hosted to encourage private landowners to engage with the project, 16 landowners in the project area attended.

12.23 The work is now in its fifth year of mapping the location of dormouse and working with private landowners to create woodland corridors and hedgerows to connect suitable habitat. Over the past 12 months two new National Dormouse Monitoring Project sites (NDMP) have been established. 100 footprint tunnels have been positioned over a number of other local sites. A further landowner engagement day has been held and we are hoping to engage with a number of farm clusters to look for opportunities to establish planting projects

Fishlake Meadows Nature Reserve

12.26 Fishlake Meadows is a 60 hectare wildlife rich wetland site situated to the north of Romsey, in the valley of the River Test SSSI. The site was pump drained to facilitate mixed agricultural use but this ceased in the 1990s leaving the site to effectively re-wild. Today the site is a mosaic of open water, reed bed, flood grazing marsh, fen and flower rich grassland. In 2016, Fishlake Meadows was secured in perpetuity by the Council through a legal agreement, along with £1.4 million pound for long term management. Following a tender exercise, the Hampshire and Isle of Wight Wildlife Trust

were awarded a 15 year contract to manage the site. Significant emphasis has been placed in encouraging sustainable access to the site with new paths constructed and viewing screens erected. Cattle were introduced onto the site in 2018 with extensive grazing across the drier areas. Over the last twelve months the Trust have undertaken significant habitat management works including extensive scrub management and reed bed works. Volunteer engagement has been extremely positive with well over 2000 hours recorded.

Positive management of Borough SINCs

- 12.27 The Council is responsible for 15 Sites of Importance for Nature Conservation (SINCs). The Council seeks to promote biodiversity and the positive management of Sites of Importance for Nature Conservation (SINCs).

Suitable Alternative Natural Green Space

- 12.28 The Council purchased 12.8 hectares of land in southern Test Valley to manage as Suitable Natural Green Space (SANG). This land whilst being accessible for people to exercise fogs off a lead will be managed proactively to increase the sites ecological value. A steering group including representation from Natural England will be set up in 2020.
- 12.29 Negotiations to secure additional land to fulfil the Council's SANG obligation are currently underway.

Abbotswood Nature Reserve

- 12.30 A new nature reserve was taken on in 2019. Secured through a S106 agreement, the Abbotswood site in Romsey is home to a large population of Great Crested Newts. The site was transferred to the Council with a commuted sum to fund its ongoing management. The funding has provided the resources to employ a full time officer to manage the habitat management, ecological survey as well as community education and engagement.

Access to the Countryside

- 12.31 The Council is working with Persimmon Homes to deliver improvement to countryside access around Andover. The project will see land secured for access as well as ecology, creating a series of linked spaces and corridors into the countryside. A sum of just under £2 million has been received to secure land and cover habitat and access management over a twenty year period.

13 Leisure, Health and Wellbeing

| RLP Policies (Chapter 8) | |
|---------------------------------|---------------------|
| Policy LHW1 | Public Open Space |
| Policy LHW2 | Ganger Farm, Romsey |
| Policy LHW3 | Forest Park |
| Policy LHW4 | Amenity |

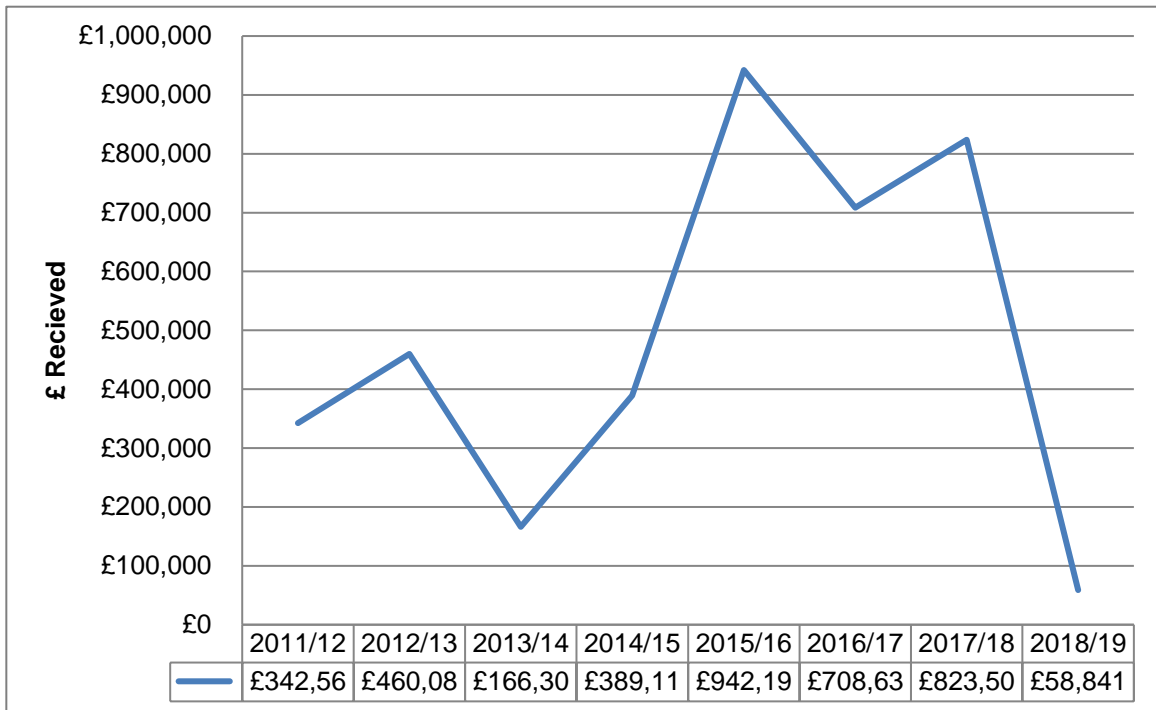
- 13.1 The residents of the Borough are active in terms of exercise when compared with the rest of the country. Test Valley is ranked 8th out of 354¹¹ authorities in terms of the percentage of its population exercising three times a week.
- 13.2 However there are a number of areas of concern, especially obesity, within the Borough. The Local Plan aims to support the promotion of a healthy lifestyle through access and provision to a range of high quality leisure facilities, including formal and informal recreation facilities and the promotion of walking and cycling by enhancing the existing network of routes. A new Places for Leisure sports facility opened in Andover on 1st April this year after a two-year build. The centre, along with other facilities are being managed in association with the Council, to improve sporting facilities across the borough.

Public Open Space

- 13.3 Policy LHW1 sets out the standards required where new housing development will result in a net increase in the population. It requires a provision of at least 3 hectares per 1000 population comprising:
- Outdoor sports facilities 1.0 hectares
 - Parks and public gardens 0.4 hectares
 - Informal recreation areas 0.8 hectares
 - Provision for children and teenagers 0.6 hectares
 - Allotments 0.2 hectares
- 13.4 Since 20011/12, £3,891,254 in Public Open Space contributions have been collected, as shown in the graph below. Following the introduction of the Community Infrastructure Levy this figure is likely to continue to decline.

¹¹ Sports England Active People Survey <https://activelives.sportengland.org/>

Figure 21: Public open space contributions (2011-2019)



13.5 This year a total of £161,303 was paid out to Parish Councils, down slightly from the 2016/17 payment of £164,104. The funding available relates to development sites meeting their triggers for payments received through a specific legal agreement, rather than Community Infrastructure Levy.

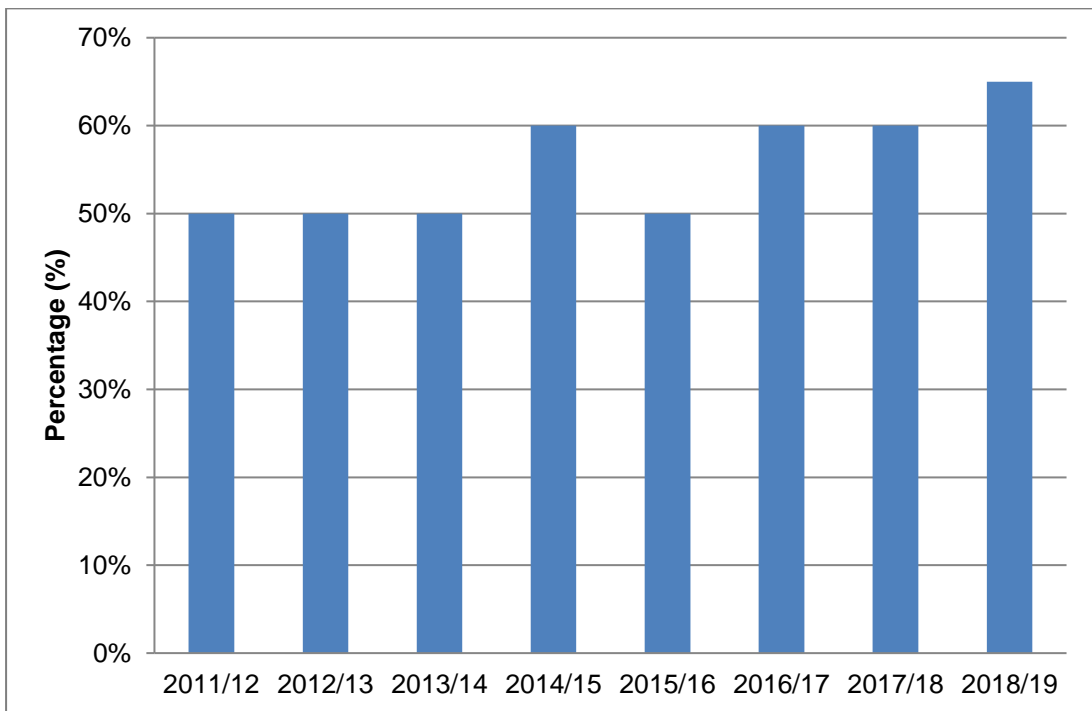
L13 Percentage of eligible open spaces managed to Green Flag Award standard

13.6 In 2018/19 the following open spaces retained their Green Flag status;

- War Memorial Park, Romsey
- Rooksbury Mill, Andover
- Valley Park Woodlands, Valley Park

13.7 The Borough's Green Space Strategy is currently being reviewed with the expectation that the number of Green Flag applications will be increased to 4 each year.

Figure 22: L13 Percentage of eligible open spaces managed to Green Flag Award standard (2011-2019)



13.8 In 2018/19 the percentage of eligible open spaces managed to Green Flag Standards is at its highest in nine years with 65%.

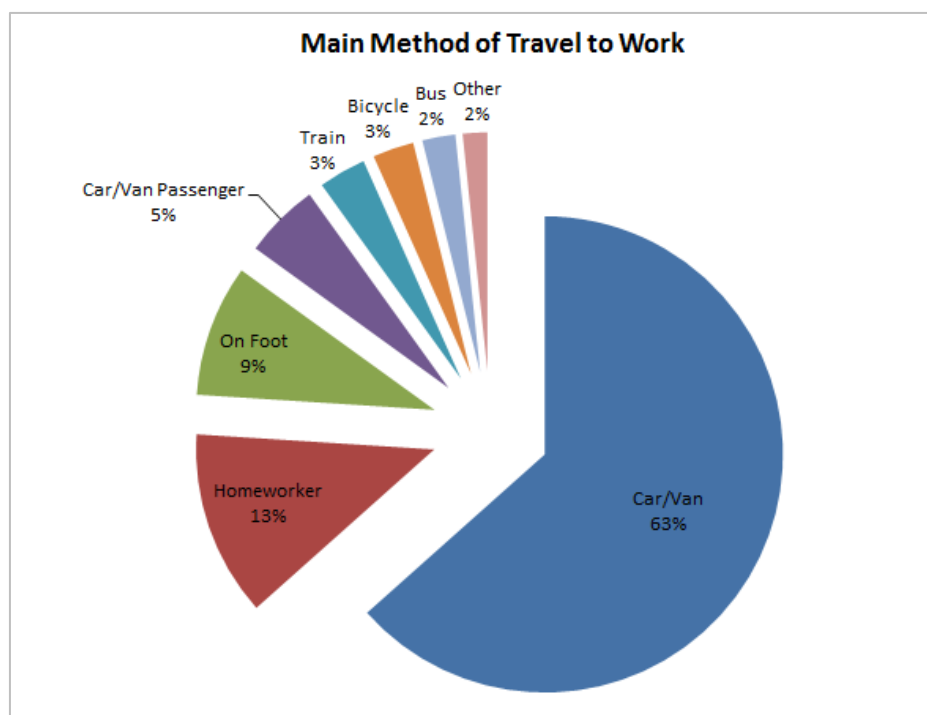
14 Transport

| RLP Policies (Chapter 9) | |
|--------------------------|---------------------------------------|
| Policy T1 | Managing Movement |
| Policy T2 | Parking Standards |
| Policy T3 | Park & Ride at Bargain Farm, Nursling |

- 14.1 The majority of residents located in the Borough have good access via the transport network to destinations both within and outside of the Borough. The M3 and M27 motorways, A303(T), A34(T), A36(T) and the main rail links provide access to London, the south coast, West Country and Midlands respectively. The good network to destinations outside of the Borough is reflected in the level of out-commuting, particularly from rural Test Valley. Access to facilities within the urban areas of the Borough is generally good. Andover has a high level of self-containment and Southern Test Valley, despite its location (close to other large urban centres), has a significant number of people living and working in the area.
- 14.2 The Borough is a relatively affluent area where car ownership and use is higher than the national average. In rural parts of the Borough, where the availability of frequent public transport services is limited, reliance on the private car is high.

Mode of transport used for commuting

Figure 23: Mode of transport used for commuting in Test Valley Borough¹²



¹² Mode of transport used for commuting in Test Valley Borough (Census, 2011)
<http://documents.hants.gov.uk/Economy/TestValleyCommuterFlows.pdf>

14.3 Figure 23 illustrates that the majority of the Borough's population (63%) commute to work by using their own private vehicle whether it be car or van. The second most common method was walking (9%), but this is considerably lower. Homeworking is on the increase in Test Valley, with 4% more people working at home than walking to work. Public transport use in the Borough is limited; the number of journeys by train has increased, however the number of bus journeys has fallen.

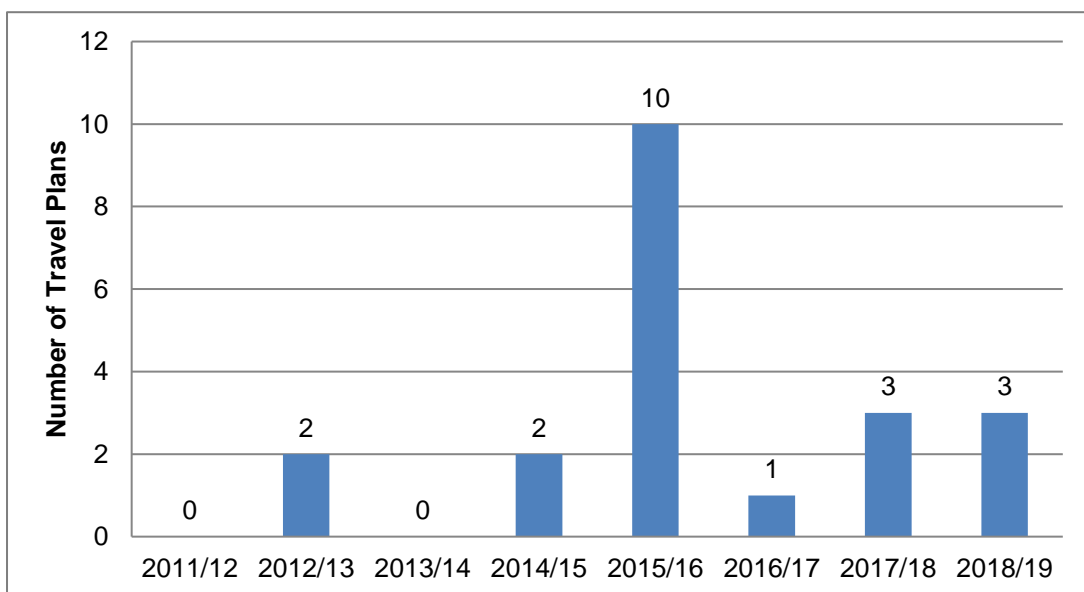
L10 Percentage of completed non-residential development complying with car parking standards

L11 Percentage of new residential development within 30 minutes of public transport time of local services

14.6 Hampshire County Council has now got responsibility for seeking and monitoring travel plans. The council is reviewing how best to monitor this indicator in the future. However, Policy Objective 12 of the *Hampshire Local Transport Plan – Part A: Long-Term Strategy (2011-2031)* calls for investment in sustainable transport measures, including walking and cycling infrastructure. This is principally for urban areas, to provide a healthy alternative to the car for local short journeys to work, local services or schools.

L3 Number of Travel Plans for new developments likely to have a significant traffic generating impact

Figure 24: L3 Number of Travel Plans for new developments likely to have a significant traffic generating impact (2011-2019)



14.7 Three travel plans were completed and approved within the reporting period:

- Harewood farm (Residential Development)
- Adanac Park “North” (Large commercial Development).
- Hoe Lane (Residential Development).

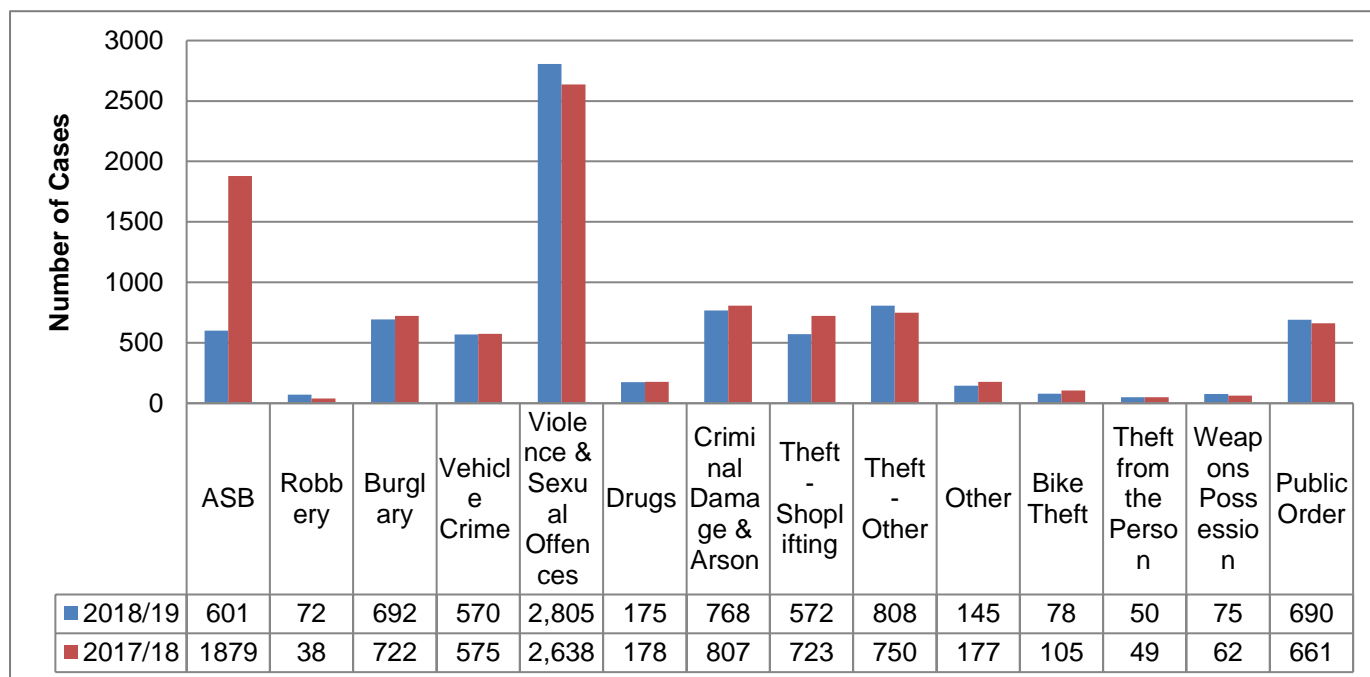
- 14.8 Several other travel plans have been submitted, but they have not yet been approved and therefore cannot be included within this document.

15 Community Safety

| | |
|--------------------------------|------------------|
| RLP Policy (Chapter 10) | |
| Policy CS1 | Community Safety |

15.1 Crime, fear of crime and anti-social behaviour can all have negative impacts upon community wellbeing and the quality of life. The Local Plan includes an objective of 'creating high quality, low crime environments and spaces'.

Figure 25: Crime statistics for Test Valley (2017-2019)



15.2 Test Valley experiences relatively low levels of crime and antisocial behaviour (ASB) when compared to national statistics¹³. Figure 26 shows the breakdown in crime statistics for the Borough, with violence and sexual offences coming out as the highest reported issue within Test Valley for the 2018/19 reporting period. Antisocial Behaviour (ASB) has decreased by more than two thirds. The number of cases of crime have increased from 528,180 in 2017/18 to 542,147 in 2018/19, however overall the frequency of cases for the many of types of crime has decreased.

¹³ UK Crime Stats: Test Valley (<http://www.ukcrimestats.com/Subdivisions/DIS/2332/>)

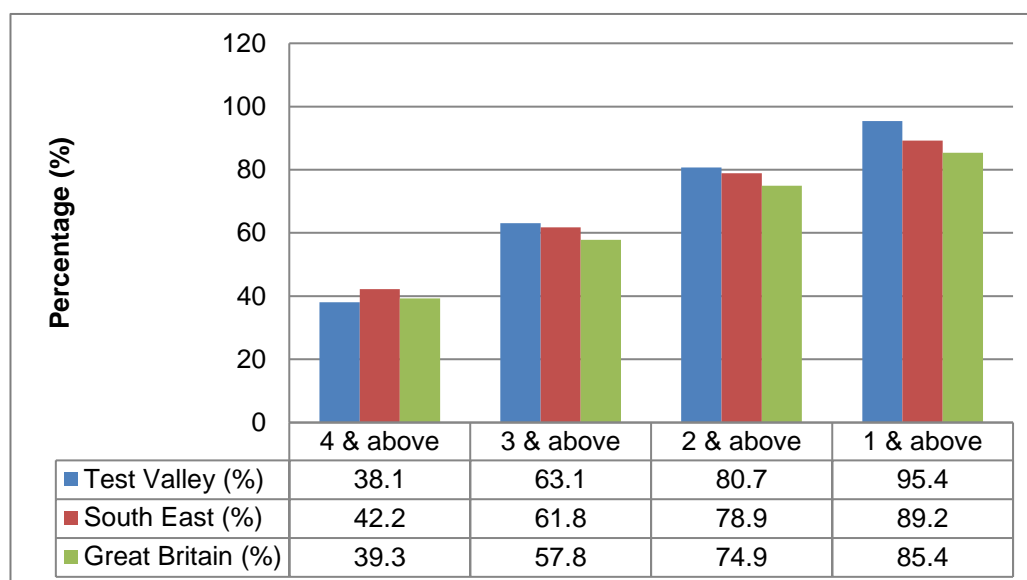
16 Education and Learning

RLP Policy (Chapter 11)

| | |
|-------------------|---------------------|
| Policy ST1 | Skills and Training |
|-------------------|---------------------|

- 16.1 Where a development has a significant impact on the labour market, contributions towards the enhancement of skills training and the provision of apprenticeships within the local community will be required. There have been 10 economic skill plans secured up to this point.
- 16.2 The Long Term Economic Strategy (LTES) identified people and their skills as one of the three key elements of the Borough's economy, the other two being enterprise and places. The Community Plan recognises that educational attainment and skills of the Borough compare well with the County and national averages with regard to qualifications.

Figure 26: Percentage of population achieving qualification level in Test Valley, South East England and Great Britain (2018/19)¹⁴



- 16.3 Test Valley Borough has a greater percentage of its population possessing qualifications at NVQ level 4 – compared to other years?

Test Valley Borough has a low percentage of level 4 and above compared to the South East and Great Britain. For levels 1, 2 and 3 the Borough is ahead of all other comparable areas, however there is a significant variation across the Borough¹⁵. Please refer to the Appendix 12 for the full table Percentage of population achieving qualification level in Test Valley (2011-2018)

¹⁴ *NOMIS Official Labour Market Statistics*, ONS (available: <https://www.nomisweb.co.uk/>)

¹⁵ NVQ 1 = e.g. fewer than 5 GCSEs at grades A-C, foundation GNVQ, NVQ 1, intermediate 1 national qualification (Scotland) or equivalent; NVQ 2 = e.g. 5 or more GCSEs at grades A-C, intermediate GNVQ, NVQ 2, intermediate 2 national qualification (Scotland) or equivalent; NVQ 3 = e.g. 2 or more A levels, advanced GNVQ, NVQ 3, 2 or more higher or advanced higher national qualifications (Scotland) or equivalent; NVQ 4+ = e.g. HND, Degree and Higher Degree level qualifications or equivalent.

- 16.4 The knowledge economy is likely to continue to account for an increasing proportion of the economy, although not all jobs will be high value and knowledge intensive. In raising educational attainment and upskilling, it will be imperative to maximise the population's potential and to attract and expand this type of economy in Test Valley. The review of the Long Term Economic Strategy (LTES) concluded the economic downturn made it even more important to invest in knowledge and skills in the Borough.
- 16.5 The provision of new educational facilities, such as schools and further education establishments is necessary to allow children to develop their skills. The Council will work closely with the Education Authority and other providers to ensure the Borough has appropriate infrastructure. It will also support programmes in partnerships such as training initiatives to develop the skills of the population.

17 Conclusion

- 17.1 This report is the seventh AMR produced by Test Valley Borough Council. The Council has again worked closely with other organisations to provide the monitoring information and will continue to do so.
- 17.2 This latest AMR has provided contextual information and has also retained the core output indicators to enable comparison with reporting in previous years. The Council will continue to identify useful opportunities to add more local output indicators to help improve the monitoring of policy implementation in future AMRs.
- 17.3 The AMR may be expanded in the coming years to meet the monitoring requirements of the DPDs and SPDs prepared for the Council's Development Plan.

Core indicators

- 17.4 *Housing:* While the Borough has seen a slight decrease in the number of affordable housing completed during the reporting year, this figure also remains above target. Housing completions have exceeded the Revised Local Plan requirements and the previous reporting year.
- 17.5 *Business Development:* The availability of Borough-wide employment land has continued to fall and the amount of employment land being lost to residential development has continued to increase. The amount of completed retail, office and leisure development in Test Valley has increased by 4,052 m² since 2017/18.
- 17.6 *Environmental Quality:*

Local indicators

- 17.7 *Public Space Contributions:* The amount of Public Space Contributions received has decreased compared to the previous reporting year, although the amount paid to Parish Councils has increased.
- 17.8 *Waste:* The recycling rate has decreased by 0.5%, however it is still exceeding the recycling target.
- 17.9 *Primary Shopping Areas:* The Non-A1 % target has been exceeded in both Andover and Romsey.

Final note

- 17.10 Overall Test Valley are performing well in context to Output Indicators, as shown in appendix 1. The Borough are performing well in terms of employment land and development as well as affordable housing completions, however improvements need to be made in reference to the

Local plan shop frontage targets. It is proposed that this will be actioned through both Andover and Romsey Masterplans.

Appendices

Appendix 1: Reference list of Core Output Indicators and Local Output Indicators

| | | | |
|------------|-------------|-----------|-----------------------------|
| Off Target | Fluctuating | On Target | No Available Data/No Change |
| | | | |

| Core Output Indicators | | Result | Trend |
|--|---|---------------------|------------------|
| Business Development | | | |
| BD1 | Amount of land developed for employment by type | 5,235m ² | Decreasing |
| BD2 | Percentage of BD1, by type, which is on Previously Developed Land | 39.9% | Increasing |
| BD3 | Employment Land Available by type | 70.89ha | Increasing |
| BD4 | Completed retail, office and leisure development in town centres in Test Valley | 2,929m ² | Increasing |
| Housing | | | |
| H1 | Plan period and housing targets | See Appendix 6&7 | |
| H2 | Housing Trajectory showing: Net additional dwellings – previous year; Net additional dwellings – reporting year; Net additional dwellings – future years; and Managed delivery target | | |
| H3 | Percentage of new and converted dwellings on Previously Developed Land | 6.18% | Decreasing |
| H4 | Net additional pitches (Gypsy and Traveller) | 0 | No change |
| H5 | Affordable housing completions | 250 | Increasing |
| H6 | Housing Quality – Building for Life Assessments | No Data | - |
| Environmental Quality | | | |
| E1 | Number of planning permissions granted contrary to advice from the Environment Agency on flooding and water quality grounds | 3 | No change |
| E2 | Change in areas of Biodiversity Importance | 9,295ha | Increasing |
| E3 | Renewable Energy Generation | 1 | Decreasing |
| Minerals | | | |
| Not Applicable (Hampshire County Council) | | No Data | - |
| Waste | | | |
| Not Applicable (Hampshire County Council) | | No Data | - |
| | | | |
| Local Output Indicators | | Result | Trend |
| Local Development Scheme Milestones | | | |
| L1 | Number of planning applications where air quality was assessed as a material consideration | 5 | Increasing |
| L2 | Deliver 200 affordable dwellings per year | 250 | Exceeding Target |
| L3 | Number of Travel Plans for new developments likely to have significant traffic generating impact | No data | - |
| L4 | Local Plan Shop Frontage Percentage Targets (Andover) | 35% | No changed |

| | | | |
|-----|---|---------------------|-------------|
| L5 | Local Plan Shop Frontage Percentage Targets (Romsey) | 38% | Decreased |
| L6 | Percentage of waste recycled in Test Valley | 34.5% | Decreasing |
| L7 | Losses of employment land in (i) development/regeneration areas and (ii) local authority area | (i) 0. | No Change |
| | | (ii) 0.47 | Increasing |
| L8 | Amount of employment land lost to residential development | 0.29ha | Decreasing |
| L9 | Percentage of new dwellings completed at: | | |
| | Less than 30 dwellings per hectare | 53.4% | Decreasing |
| | Between 30 and 50 dwellings per hectare | 42.5% | Increasing |
| | Above 50 dwellings per hectare | 4.1% | Decreasing |
| L10 | Percentage of completed non-residential development complying with car park standards set out in the Local Development Framework | No Data | - |
| L11 | Percentage of new residential development within 30 minutes of public transport time of a GP, primary and secondary school, employment and a major health centre | No Data | - |
| L12 | Amount of completed retail, office and leisure development | 6,062m ² | Increasing |
| L13 | Percentage of eligible open spaces managed to green flag award standard | 65% | Increasing |
| L14 | Change in areas and populations of Biodiversity Importance, including: (i) Change in priority habitats and species (by type); and (ii) Change in areas designated for their intrinsic environmental value including sites of international, national, regional, sub-regional or local significance. | See Tables | Fluctuating |

Appendix 2: Comparison of unemployment levels between Test Valley, the South East and Great Britain (2008 – 2019)

| Unemployment in Test Valley age 16 and over | | | | |
|---|-----------------------|--------------------|-------------------|----------------------|
| | Test Valley Figure | Test Valley (%) | South East (%) | Great Britain (%) |
| 2008/09 | 2300 | 3.5 | 4.7 | 6.2 |
| 2009/10 | 2800 | 4.7 | 6.3 | 7.9 |
| 2010/11 | 2500 | 4.0 | 5.8 | 7.6 |
| 2011/12 | 2500 | 4.4 | 5.9 | 8.1 |
| 2012/13 | 2600 | 4.6 | 6.1 | 7.8 |
| 2013/14 | 2200 | 3.5 | 5.4 | 7.2 |
| 2014/15 | 2100 | 3.3 | 4.6 | 6.0 |
| 2015/16 | 1800 | 2.9 | 4.2 | 5.2 |
| 2016/17 | 1600 | 2.5 | 3.8 | 4.7 |
| 2017/18 | 1700 | 2.6 | 3.4 | 4.3 |
| 2018/19 | 1,800 | 2.9 | 3.3 | 4.1 |

Appendix 3: Area of the New Forest National Park that lies within Test Valley Borough



Appendix 4: Comparison of policies of the Borough Local Plan (BLP, 2006) and Revised Local Plan (RLP, 2016)

| BLP (2006) | RLP (2006) |
|---|---|
| SET 01 Housing within Settlements | Policy COM2: Settlement Hierarchy |
| SET 02 Residential Area of Special Character | Policy E4: Residential Areas of Special Character |
| SET 03 Development in the Countryside | Policy COM2: Settlement Hierarchy |
| SET 04 Strategic Gaps | Policy E3: Local Gaps |
| SET 05 Local Gaps | Policy E3: Local Gaps |
| SET 06 Frontage Infill Policy Areas in the Countryside | Deleted |
| SET 07 Existing Employment Sites in the Countryside | Policy LE17: Employment Sites in the Countryside |
| SET 08 Farm Diversification | Deleted |
| SET 09 The Reuse of Buildings in the Countryside | Policy LE16: Re-Use of Buildings in the Countryside |
| SET 10 Expansion of Existing Employments Sites in the Countryside | Policy LE17: Employment Sites in the Countryside |
| SET 11 Replacement Dwellings in the Countryside | Policy COM12: Replacement Dwellings in the Countryside |
| SET 12 The Alteration or Extension of Existing Dwellings in the Countryside | Policy COM 11: Existing Dwellings in the Countryside |
| SET 13 Buildings in Domestic Curtilages in the Countryside | Policy COM 11: Existing Dwellings in the Countryside |
| ENV 01 Biodiversity and Geological Conservation | Policy E5: Biodiversity |
| ENV 03 Sites of Special Scientific Interest | Policy E5: Biodiversity |
| ENV 04 Sites of Importance for Nature Conservation | Policy E5: Biodiversity |
| ENV 05 Protected Species | Policy E5: Biodiversity |
| ENV 07 North Wessex Downs Area of Outstanding Natural Beauty | Policy E2: Protect, Conserve and Enhance the Landscape Character of the Borough |
| ENV 09 Water Resources | Policy E7: Water Management |
| ENV 10 Groundwater Source Protection Zones | Policy E7: Water Management |
| ENV 11 Archaeology and Cultural Heritage | Policy E9: Heritage |
| ENV 12 Demolition of Listed Buildings | Policy E9: Heritage |
| ENV 13 Alteration and Change of Use of Listed Buildings | Policy E9: Heritage |

| BLP (2006) | RLP (2006) |
|---|---|
| ENV 14 Demolition in Conservation Areas | Policy E9: Heritage |
| ENV 15 Development in Conservation Areas | Policy E9: Heritage |
| ENV 16 Registered Historic Parks and Gardens | Policy E9: Heritage |
| ENV 17 Settings of Conservation Areas, Listed Buildings, Archaeology Sites and Historic Parks and Gardens | Policy E9: Heritage |
| HAZ 02 Flooding | Policy E7: Water Management |
| HAZ 03 Pollution | Policy E8: Pollution |
| HAZ 04 Land Contamination | Policy E8: Pollution |
| HAZ 05 Hazardous Installations | Deleted |
| HAZ 06 Safeguarded Aerodromes and Technical Sites | Deleted |
| ESN 01 Retention of Existing Housing Stock | Deleted |
| ESN 02 Conversion to Residential Use | Deleted |
| ESN 03 Housing Types, Density and Mix | Policy COM1: Housing Provision 2011-2029 |
| ESN 04 Affordable Housing in Settlements | Policy COM7: Affordable Housing |
| ESN 05 Rural Exception Affordable Housing | Policy COM8: Rural Exception Affordable Housing |
| ESN 06 Rural Development | Policy COM9: Community Led Development |
| ESN 07 Agricultural Worker's Dwellings | Policy COM10: Occupational Accommodation for Rural Workers in the Countryside |
| ESN 08 Removal of Agricultural Occupancy Conditions | Policy COM10: Occupational Accommodation for Rural Workers in the Countryside |
| ESN 09 Housing for Key Workers in the Countryside | Policy COM10: Occupational Accommodation for Rural Workers in the Countryside |
| ESN 12 Change of Use or Redevelopment of Nursing or Residential Care Homes | Deleted |
| ESN 13 Sites for Gypsies and Travellers | Policy COM13: Gypsy, Travellers and Travelling Showpeople |
| ESN 14 Sites for Travelling Showpeople | Policy COM13: Gypsy, Travellers and Travelling Showpeople |
| ESN 15 Retention of Employment Land | Policy LE10: Retention of Employment Land and Strategic Employment Sites |

| BLP (2006) | RLP (2006) |
|--|--|
| ESN 16 Employment Development within Settlements | Policy COM2: Settlement Hierarchy |
| ESN 17 Major Retail Development and Other Key Town Centre Uses | Policy LE11: Main Town Centre Uses |
| ESN 18 Retention of Existing Local Shops and Public Houses | Policy COM14: Community Services & Facilities |
| ESN 19 Retention of Local Community Facilities | Policy COM14: Community Services & Facilities |
| ESN 20 New Local Shops and Community Facilities | Policy COM2: Settlement Hierarchy Policy LE16: Re-Use of Buildings in the Countryside |
| ESN 21 Retention of Recreational Areas and Facilities | Policy LHW1: Public Open Space |
| ESN 22 Public Recreational Open Space Provision | Policy LHW1: Public Open Space |
| ESN 23 Formal Recreation Facilities in the Countryside | Deleted |
| ESN 24 Noisy Sports | Policy E8: Pollution |
| ESN 25 The Keeping of Horses | Deleted |
| ESN 26 Tourism Development within Settlements | Policy LE18: Tourism |
| ESN 27 Tourism Facilities in the Countryside | Policy LE18: Tourism |
| ESN 28 Tourist Accommodation in the Countryside | Policy LE18: Tourism |
| ESN 29 Touring, Camping and Caravan Sites | Policy LE18: Tourism |
| ESN 30 Infrastructure Provision within New Development | Policy COM15: Infrastructure |
| ESN 31 Telecommunications | Deleted |
| ESN 32 Renewable Energy Developments | Deleted |
| TRA 01 Travel Generation Development | Policy T1: Managing Movement |
| TRA 02 Parking Standards | Policy T2: Parking Standard |
| TRA 03 Public Transport Infrastructure | Policy T1: Managing Movement |
| TRA 04 Financial Contributions to Transport Infrastructure | Policy T1: Managing Movement |
| TRA 05 Safe Access | Policy T1: Managing Movement |
| TRA 06 Safe Layouts | Policy T1: Managing Movement |
| TRA 07 Access for Disabled People | Policy T1: Managing Movement |
| TRA 08 Public Rights of Way | Policy T1: Managing Movement |
| TRA 09 Impact on the Highway Network | Policy T1: Managing Movement |

| BLP (2006) | RLP (2006) |
|---|---|
| DES 01 Landscape Character | Policy E2: Protect, Conserve and Enhance the Landscape Character of the Borough |
| DES 02 Settlement Character | Policy E1: High Quality Development in the Borough |
| DES 03 Transport Corridors | Policy T1: Managing Movement |
| DES 04 Route Networks | Policy T1: Managing Movement |
| DES 05 Layout and Siting | Policy E1: High Quality Development in the Borough |
| DES 06 Scale Height and Massing | Policy E1: High Quality Development in the Borough |
| DES 07 Appearance, Details and Materials | Policy E1: High Quality Development in the Borough |
| DES 08 Trees and Hedgerows | Policy E2: Protect, Conserve and Enhance the Landscape Character of the Borough |
| DES 09 Wildlife and Amenity Features | Policy E5: Biodiversity |
| DES 10 New Landscaping | Deleted |
| DES 11 Shop Fronts | Deleted |
| DES 12 Signs | Deleted |
| DES 13 Shutters | Deleted |
| AME 01 Privacy and Private Open Space | Policy LHW4: Amenity |
| AME 02 Daylight and Sunlight | Policy LHW4: Amenity |
| AME 03 Artificial Light Intrusion | Policy E8: Pollution |
| AME 04 Noise and Vibration | Policy E8: Pollution |
| AME 05 Unpleasant emissions | Policy E8: Pollution |
| AND 01 East of Icknield Way | Deleted |
| AND 02 Picket Twenty | Deleted |
| AND 03 Walworth Industrial Estate | Policy LE8: Extension to Walworth Business Park |
| AND 04 Andover Business Park | Policy LE9: Andover Airfield Business Park |
| AND 05 London Road | Deleted |
| AND 06 Ladies Walk | Deleted |
| AND 07 Andover Town Centre | Policy LE13: Ground Floor Uses in Andover |
| STV 01 University of Southampton Science Park | Policy LE1: University of Southampton Science Park |
| STV 03 Adanac Park | Policy LE6: Land at Adanac Park, Nursling |
| STV 04 Park & Ride, Nursling | Policy T3: Park & Ride, Nursling |
| STV 05 Nursling Estate | Policy LE17: Nursling Estate |
| STV 06 Romsey Brewery | Deleted |
| STV 07 Abbotswood | Deleted |

| BLP (2006) | RLP (2006) |
|---------------------------|--|
| STV 08 Romsey Town Centre | Policy LE12: Ground Floor uses in Romsey |
| STV 09 Ganger Farm | Policy LHW2: Ganger Farm, Romsey |

Appendix 5: Housing Trajectory Guidance Note Summary

| HOUSING TRAJECTORY | |
|--------------------|---|
| Row A | Total completions for past years, from allocated sites |
| Row B | Total completions for past years, from unallocated sites |
| Row C | Total completions for past years, (sum of allocated sites plus unallocated sites) |
| Row D | Total projected completions for current and future years |
| Row E | Cumulative completions for each year (sum of completions for current and past years) |
| Row F | PLAN figure – annual strategic requirement (set out by the Local Plan) |
| Row G | MONITOR figure – number of cumulative completions above or below the PLAN figure (F) ¹⁶ |
| Row H | MANAGE figure – number of future completions required to meet the outstanding strategic requirement ¹⁷ |

CALCULATION

1. $C = A + B$
2. $E \text{ (from previous year)} + C = E \text{ (for current year)}$
3. $E \text{ (for current year)} - (F \times \text{number of years into the plan period}) = G$
4.
 - a. For the first year, the MANAGE figure (H) is identical to the PLAN figure (F)
 - b. For the second year onwards, $H = F - (G \text{ divided by the number of years remaining})$

CHART

Comprises 2 graphs:

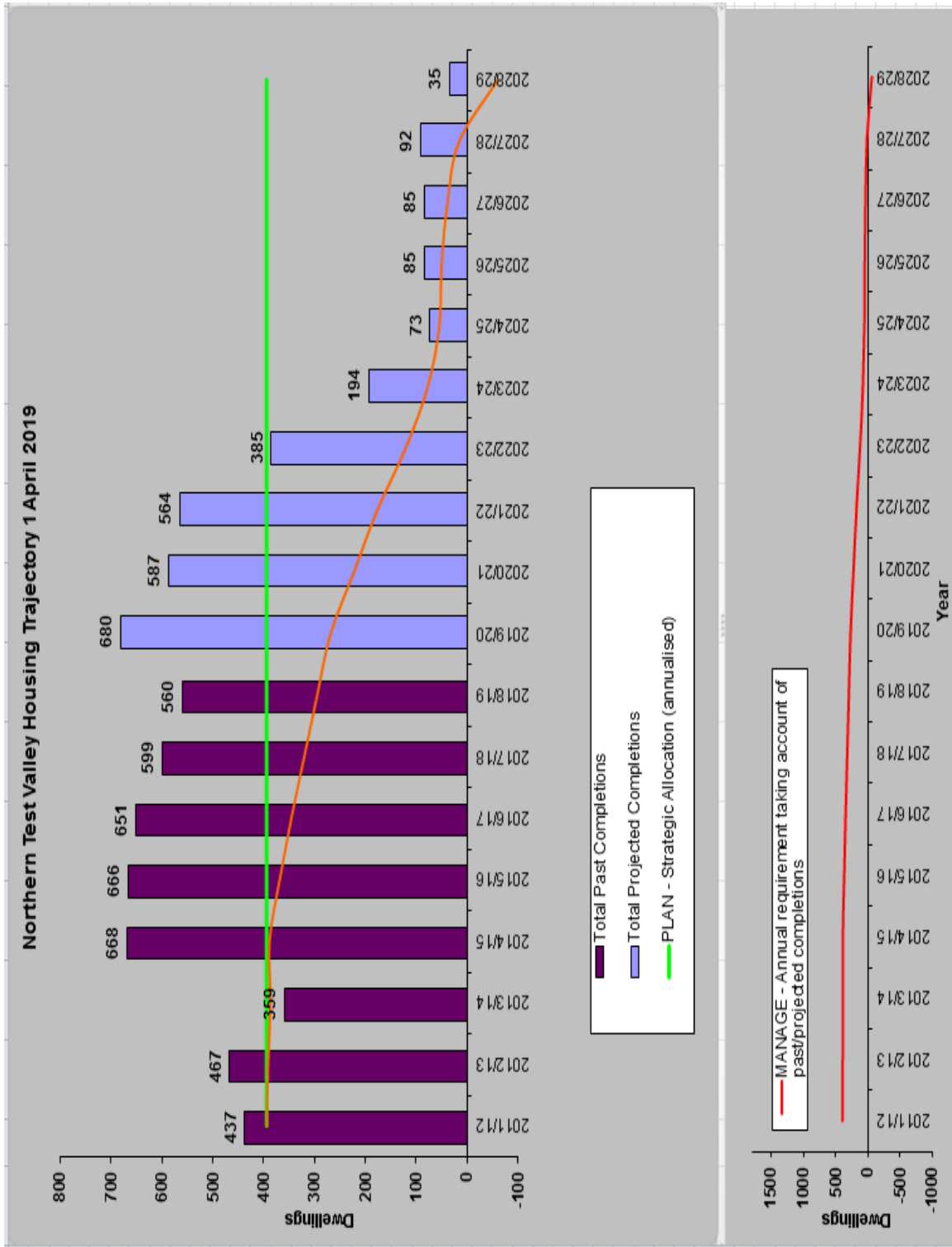
1. Total past completions and total projected future completions. This graph shows the PLAN figure (F) and the MANAGE figure (H) as line graphs, overlaid on the bar chart.
2. MONITOR figure (G) shown as a line graph

¹⁶ Where cumulative completions are above the total annual requirement to date, the figure is positive and there is a surplus (i.e. the strategy is ahead of its delivery); where the cumulative completions are below the annual requirement to date, the figure is negative and there is a shortfall (i.e. the strategy is under-delivering).

¹⁷ This is the remaining annual requirement as reflected over the remaining years of the plan period, taking account of shortfalls or surplus from previous years.

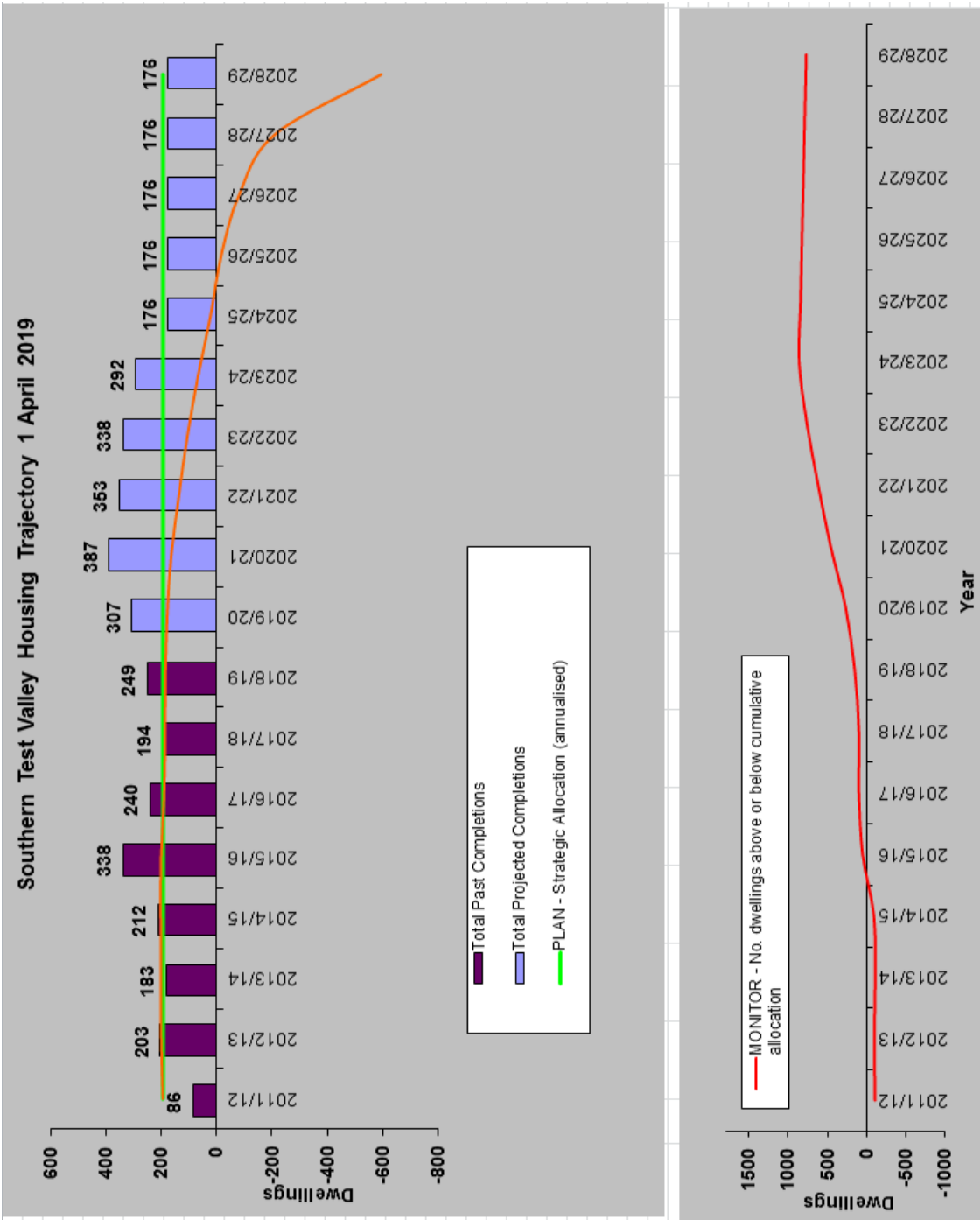
Appendix 6: Housing Trajectory 2011/12-2028/29 for Northern Test Valley (as at April 2019)

| Northern Test Valley Housing Trajectory 1 April 2019 | | | | | | | | | | | | TOTAL | | | | | | | |
|---|------------|------------|------------|------------|------------|------------|-------------|-------------|-------------|-------------|-------------|-------------|-------------|-------------|-------------|------------|------------|------------|-------------|
| | 2011/12 | 2012/13 | 2013/14 | 2014/15 | 2015/16 | 2016/17 | 2017/18 | 2018/19 | 2019/20 | 2020/21 | 2021/22 | 2022/23 | 2023/24 | 2024/25 | 2025/26 | 2026/27 | 2027/28 | 2028/29 | |
| BLP (2006) Allocations | | | | | | | | | | | | | | | | | | | |
| East Anton, Andover | 103 | 181 | 135 | 229 | 146 | 184 | 162 | 239 | 250 | 207 | 152 | 55 | | | | | | | 2043 |
| Picket Twenty, Andover | 147 | 178 | 180 | 176 | 164 | 145 | 175 | 37 | | | | | | | | | | | 1202 |
| RLP (2016) Allocations | | | | | | | | | | | | | | | | | | | |
| Picket Twenty Extension | | | | | | | | 45 | 141 | 128 | 107 | 99 | | | | | | | 520 |
| Picket Piece Extension | | | | 2 | 2 | 14 | 33 | 30 | 117 | 50 | 52 | 21 | 2 | 20 | 20 | 20 | 17 | | 400 |
| George Yard/Black Swan Yard | | | | | | | | | | | | | | | 30 | 30 | 40 | | 100 |
| Projections - Allocated Sites | | | | | | | | | 508 | 385 | 311 | 175 | 2 | 20 | 50 | 50 | 57 | | |
| Completions - Allocated Sites | 250 | 359 | 315 | 407 | 312 | 343 | 370 | 351 | | | | | | | | | | | 2707 |
| Completions - Unallocated Sites | 187 | 108 | 44 | 261 | 354 | 308 | 229 | 209 | | | | | | | | | | | 1700 |
| Existing Commitments | | | | | | | | | 172 | 162 | 160 | 105 | 87 | | | | | | 686 |
| Identified Capacity - SHELAA sites (5+ units) | | | | | | | | | | 5 | 58 | 70 | 70 | 18 | | | | | 221 |
| Unplanned sites (windfall) | | | | | | | | | | 35 | 35 | 35 | 35 | 35 | 35 | 35 | 35 | 35 | 315 |
| Total Past Completions | 437 | 467 | 359 | 668 | 666 | 651 | 599 | 560 | | | | | | | | | | | |
| Total Projected Completions | | | | | | | | | 680 | 587 | 564 | 385 | 194 | 73 | 85 | 85 | 92 | 35 | 7187 |
| Cumulative Completions | 437 | 904 | 1263 | 1931 | 2597 | 3248 | 3847 | 4407 | 5087 | 5674 | 6238 | 6623 | 6817 | 6890 | 6975 | 7060 | 7152 | 7187 | |
| PLAN - Strategic Allocation (annualised) | 394 | 394 | 394 | 394 | 394 | 394 | 394 | 394 | 394 | 394 | 394 | 394 | 394 | 394 | 394 | 394 | 394 | 394 | 7092 |
| MONITOR - No dwellings above or below cumulative allocation | 43 | 116 | 81 | 355 | 627 | 884 | 1089 | 1255 | 1541 | 1734 | 1904 | 1895 | 1695 | 1374 | 1065 | 756 | 454 | 95 | |
| MANAGE - Annual requirement taking account of past/projected completions | 394 | 391 | 387 | 389 | 369 | 346 | 320 | 295 | 269 | 223 | 177 | 122 | 78 | 55 | 51 | 39 | 16 | -60 | |
| Years Remaining | 18 | 17 | 16 | 15 | 14 | 13 | 12 | 11 | 10 | 9 | 8 | 7 | 6 | 5 | 4 | 3 | 2 | 1 | |

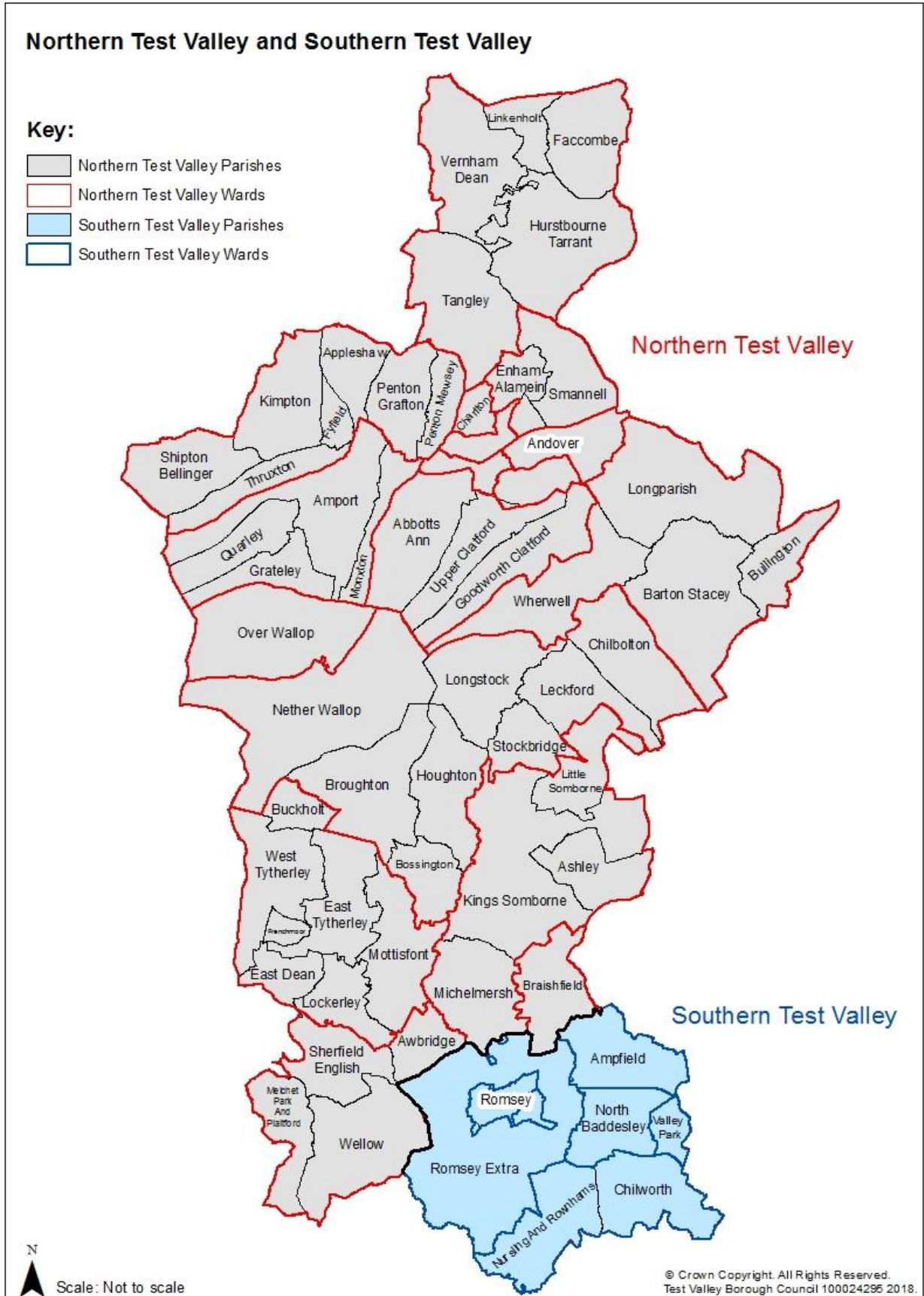


Appendix 7: Housing Trajectory 2011/12-2028/29 for Southern Test Valley (as at April 2019)

| | 2011/12 | 2012/13 | 2013/14 | 2014/15 | 2015/16 | 2016/17 | 2017/18 | 2018/19 | 2019/20 | 2020/21 | 2021/22 | 2022/23 | 2023/24 | 2024/25 | 2025/26 | 2026/27 | 2027/28 | 2028/29 | TOTAL |
|---|---------|---------|---------|---------|---------|---------|---------|---------|---------|---------|---------|---------|---------|---------|---------|---------|---------|---------|-------|
| Southern Test Valley Housing Trajectory 1 April 2019 | | | | | | | | | | | | | | | | | | | |
| BLP (2006) Allocations | | | | | | | | | | | | | | | | | | | |
| Romsey Brewery | | 8 | 5 | | | | | | | | | | | 10 | 10 | 10 | 10 | 10 | 63 |
| Abbotswood, Romsey | 30 | 190 | 157 | 114 | 152 | 90 | 20 | | 9 | 27 | | | | | | | | | 789 |
| RLP (2016) Allocations | | | | | | | | | | | | | | | | | | | |
| Whitenap, Romsey | | | | | | | | | | | | 50 | 150 | 150 | 150 | 150 | 150 | 150 | 950 |
| Hoe Lane, North Baddesley | | | | | | | | | | | 75 | 150 | 75 | | | | | | 300 |
| Park Farm, North Stoneham | | | | | | | | | | | 30 | 20 | | | | | | | 50 |
| Projections - Allocated Sites | | | | | | | | 9 | 27 | 105 | 220 | 225 | 160 | 160 | 160 | 160 | 160 | 160 | 1386 |
| Completions - Allocated Sites | 30 | 198 | 162 | 114 | 152 | 90 | 20 | | | | | | | | | | | | 656 |
| Completions - Unallocated sites | 56 | 5 | 21 | 98 | 186 | 150 | 174 | 249 | | | | | | | | | | | 939 |
| Existing Commitments | | | | | | | | | 298 | 344 | 232 | 102 | 51 | | | | | | 1027 |
| Identified Capacity - SHELAA sites (5+ units) | | | | | | | | | | | | | | | | | | | 0 |
| Unplanned sites (windfall) | | | | | | | | | | 16 | 16 | 16 | 16 | 16 | 16 | 16 | 16 | 16 | 144 |
| Total Past Completions | 86 | 203 | 183 | 212 | 338 | 240 | 194 | 249 | | 16 | 16 | 16 | 16 | 16 | 16 | 16 | 16 | 16 | 144 |
| Total Projected Completions | | | | | | | | | 307 | 387 | 353 | 338 | 292 | 176 | 176 | 176 | 176 | 176 | 4262 |
| Cumulative Completions | 86 | 289 | 472 | 684 | 1022 | 1262 | 1456 | 1705 | 2012 | 2399 | 2752 | 3090 | 3382 | 3558 | 3734 | 3910 | 4086 | 4262 | 4262 |
| PLAN - Strategic Allocation (annualised) | 194 | 194 | 194 | 194 | 194 | 194 | 194 | 194 | 194 | 194 | 194 | 194 | 194 | 194 | 194 | 194 | 194 | 194 | 3492 |
| MONITOR - No. dwellings above or below cumulative allocation | -108 | -99 | -110 | -92 | 52 | 98 | 98 | 153 | 266 | 459 | 618 | 762 | 860 | 842 | 824 | 806 | 788 | 770 | 770 |
| MANAGE - Annual requirement taking account of past/projected completions | 194 | 200 | 200 | 201 | 201 | 190 | 186 | 185 | 179 | 164 | 137 | 106 | 67 | 22 | -17 | -81 | -209 | -594 | -594 |
| Years Remaining | 18 | 17 | 16 | 15 | 14 | 13 | 12 | 11 | 10 | 9 | 8 | 7 | 6 | 5 | 4 | 3 | 2 | 1 | 1 |



Appendix 8: Map illustrating extent of Northern Test Valley and Southern Test Valley



Appendix 9: Percentage of new and converted dwellings on Previously Developed Land (2011/12-2018/19)

| Density (Dwellings / ha) | 2011/12 | | 2012/13 | | 2013/14 | | 2014/15 | | 2015/16 | | 2016/17 | |
|--------------------------------|---------|------|---------|------|---------|------|---------|------|---------|------|---------|------|
| | # | % | # | % | # | % | # | % | # | % | # | % |
| <30 | 89 | 17.9 | 65 | 10.2 | 37 | 6.7 | 162 | 18.8 | 325 | 33.5 | 271 | 31.6 |
| 30-50 | 335 | 67.4 | 464 | 72.6 | 465 | 84.7 | 591 | 68.7 | 498 | 51.3 | 226 | 26.4 |
| >50 | 73 | 14.7 | 110 | 17.2 | 47 | 8.6 | 107 | 12.4 | 148 | 15.2 | 360 | 42.0 |
| Total | 497 | | 639 | | 549 | | 860 | | 971 | | 857 | |

| Density (Dwellings / ha) | 2017/18 | | 2018/19 | |
|--------------------------------|---------|------|---------|------|
| | # | % | # | % |
| <30 | 416 | 54.6 | 455 | 53.4 |
| 30-50 | 264 | 34.6 | 362 | 42.5 |
| >50 | 82 | 10.8 | 35 | 4.1 |
| Total | 762 | | 852 | |

Appendix 10: L7 Loss of employment land in Test Valley (2011-2019)

| Application Reference | Location | Proposal | Existing Land Use | Net Loss (m ²) |
|-----------------------|---|--|-------------------|----------------------------|
| 16/00180/PDON | Lancol House 63, Charlton Road, Andover | Prior notification - convert B1a offices into residential | B1(a) | 285 |
| 18/01622/PDON | Sheridan House 23 - 25, London Street, Andover | Prior notification - convert offices into 4 flats | B1(a) | 202 |
| 18/00319/FULLN | 36-38 East Street, Andover | Alterations to create 2 dwellings and part change use of offices to D1 chiropractor clinic | B1(a) | 498 |
| 18/02158/FULLS | Adj Home Farm, Embley Lane, East Wellow | Demolition of industrial buildings and the erection of 8 dwellings | B1-8 | 600 |
| 17/01078/FULLS | 76a The Hundred, Romsey | Convert Workshop into a dwelling | B1 | 207 |
| 14/02003/FULLN | 27a High Street, Andover | Extend and convert 1st and 2nd floor offices into 6 flats | B1(a) | 274 |
| 16/03064/FULLS | Home Farm, Embley Lane, East Lane | Demolish agricultural/ industrial buildings and erect 5 dwellings | B2 | 276 |
| 17/01943/FULLS | Poplar Farm, Dean Road, West Tytherley | Erection of 2 barn style dwellings | B1-8 | 229 |
| 16/03020/PDON | 3 Eastgate House, 5-7 Eastgate Street, Andover | Prior notification-convert offices into 6 dwellings | B1(a) | 444 |
| 16/02296/FULLN | Unit 3F Walworth Enterprise Centre, Duke Close, Andover | C/use from B1/B2/B8 use to boxing gym | B1-8 | 223 |

| Application Reference | Location | Proposal | Existing Land Use | Net Loss (m ²) |
|-----------------------|--|---|-------------------|----------------------------|
| 16/03015/FULLN | 6 OYO Business Units, The Fairground, Weyhill | C/use from industry to a dog day care crèche and other dog uses | B8 | 251 |
| 17/01615/OUTS | Former North Hill, Sawmill Yard, Baddesley Road, North Baddesley | Outline - care village comprising 149 extra care units (flats, cottages & bungalows) and up to 280sqm of D1 buildings | B1-8 | 710 |
| 18/01429/FULLS | Unit 30 Romsey Industrial Estate, Greatbridge Road, Romsey | Change of use from B1 light industrial to D2 gym | B1(c) | 481 |
| | | | Total | 4,680 |

Appendix 11: Distribution of Hampshire BAP Species (N=50) For Annual Reporting from 2008 to 2018

| Scientific name | Common name | Group | Test Valley |
|---------------------------------|-----------------------------|-------------|-------------|
| <i>Triturus cristatus</i> | grey crested newt | Amphib | ✓ |
| <i>Bombus humilus</i> | brown-band. carder bee | Bees | |
| <i>Lucanus cerus</i> | stag beetle | Beetles | ✓ |
| <i>Alauda arvensis</i> | skylark | Birds | ✓ |
| <i>Branta bernicla bernicla</i> | dark-bellied Brent goose | Birds | ✓ |
| <i>Caprimulgus europ.</i> | nightjar | Birds | ✓ |
| <i>Lallula arborea</i> | woodlark | Birds | ✓ |
| <i>Luscinia megarhynchos</i> | nightingale | Birds | ✓ |
| <i>Emberizac alandra</i> | corn bunting | Birds | ✓ |
| <i>Perdix perdix</i> | grey partridge | Birds | ✓ |
| <i>Pyrrhula pyrrhula</i> | bullfinch | Birds | ✓ |
| <i>Streptopelia turtur</i> | turtle dove | Birds | ✓ |
| <i>Sylvia undata</i> | Dartford warbler | Birds | ✓ |
| <i>Tringa totanus</i> | redshank | Birds | ✓ |
| <i>Vanellus vanellus</i> | lapwing | Birds | ✓ |
| <i>Argynnis paphia</i> | silver-washed fritillary | Butterflies | ✓ |
| <i>Cupido minimus</i> | small blue | Butterflies | ✓ |
| <i>Hamearis lucina</i> | Duke of Burgundy | Butterflies | ✓ |
| <i>Hesperia comma</i> | silver-spotted skipper | Butterflies | ✓ |
| <i>Lysandra coridon</i> | chalkhill blue | Butterflies | ✓ |
| <i>Plebejus argus</i> | silver-studded blue | Butterflies | |
| <i>Gammarus insensibilis</i> | lagoon sand shrimp | Crustacea | |
| <i>Coenagrion mercuriale</i> | southern damselfly | Dragonfly | ✓ |
| <i>Asilus crabroniformis</i> | hornet robberfly | Flies | ✓ |
| <i>Carex divisa</i> | divided sedge | Flw Plants | |
| <i>Chamaemelum nobile</i> | chamomile | Flw Plants | ✓ |
| <i>Epipactis phyllanthes</i> | Green-flowered. helleborine | Flw Plants | ✓ |
| <i>Gentiana pneumon.</i> | marsh gentian | Flw Plants | ✓ |
| <i>Juniperus communis</i> | juniper | Flw Plants | ✓ |
| <i>Lithospermum arvense</i> | field gromwell | Flw Plants | ✓ |
| <i>Oenanthe fluviatilis</i> | river water-dropwort | Flw Plants | ✓ |
| <i>Orchis morio</i> | green-winged orchid | Flw Plants | ✓ |
| <i>Pulicaria vulgaris</i> | small fleabane | Flw Plants | |
| <i>Pulmonaria longifolia</i> | marrow leaved lungwort | Flw Plants | |
| <i>Thesium humifuum</i> | bastard toadflax | Flw Plants | ✓ |
| <i>Zostera marina/noltii</i> | eelgrass | Flw Plants | |

| Scientific name | Common name | Group | Test Valley |
|---------------------------------|-------------------------|-------------|-------------|
| <i>Poronia punctate</i> | nail fungus | Fungi | |
| <i>Gomphocerippus rufus</i> | rufous grasshopper | Grasshopper | |
| <i>Arvicola terrestris</i> | water vole | Mammals | ✓ |
| <i>Eptesicus serotinus</i> | Serotine bat | Mammals | ✓ |
| <i>Lepus europaeus</i> | brown hare | Mammals | ✓ |
| <i>Muscardinus avellan.</i> | dormouse | Mammals | ✓ |
| <i>Vertigo moulinsiana</i> | Desmoulin's whorl snail | Molluscs | |
| <i>Apoda limacodes</i> | festoon | Moths | ✓ |
| <i>Catocala promissa</i> | light crimson underwing | Moths | ✓ |
| <i>Hemaris fuciformis</i> | broad-bord. Bee hawk | Moths | ✓ |
| <i>Hypena rostrialis</i> | buttoned snout | Moths | ✓ |
| <i>Minoa murinata</i> | drab looper | Moths | ✓ |
| <i>Shargacucullia lychnitis</i> | striped lychnis | Moths | ✓ |
| <i>Coronella austriaca</i> | smooth snake | Reptiles | |
| | | Total | 39 |

Appendix 12: Percentage of population achieving qualification level in Test Valley (2011-2018)

| Qualification level | | | | | |
|---------------------|-------------------------|----------------------|-----------------|----------------|-------------------|
| | NVQ Level ¹⁸ | Test Valley (number) | Test Valley (%) | South East (%) | Great Britain (%) |
| 2018 | 4 & above | 27,900 | 38.1 | 42.2 | 39.3 |
| | 3 & above | 46,200 | 63.1 | 61.8 | 57.8 |
| | 2 & above | 59,100 | 80.7 | 78.9 | 74.9 |
| | 1 & above | 69,800 | 95.4 | 89.2 | 85.4 |
| 2017 | 4 & above | 27,700 | 38.5 | 41.4 | 38.6 |
| | 3 & above | 52,400 | 72.8 | 61.1 | 57.2 |
| | 2 & above | 62,800 | 87.2 | 78.6 | 74.7 |
| | 1 & above | 67,300 | 93.4 | 89.5 | 85.4 |
| 2016 | 4 & above | 31,700 | 44.5 | 41.4 | 38.2 |
| | 3 & above | 46,600 | 65.4 | 60.2 | 56.9 |
| | 2 & above | 56,400 | 79.2 | 77.5 | 74.3 |
| | 1 & above | 66,500 | 93.4 | 88.8 | 85.3 |
| 2015 | 4 & above | 31,100 | 43.2 | 39.7 | 37.1 |
| | 3 & above | 42,000 | 58.3 | 58.8 | 55.8 |
| | 2 & above | 57,300 | 79.6 | 76.8 | 73.6 |
| | 1 & above | 67,700 | 94.1 | 88.5 | 84.9 |
| 2014 | 4 & above | 31,900 | 44.2 | 39.1 | 36.0 |
| | 3 & above | 45,300 | 62.9 | 58.8 | 55.0 |
| | 2 & above | 58,500 | 81.1 | 77.1 | 73.3 |
| | 1 & above | 66,600 | 92.4 | 89.2 | 85.0 |
| 2013 | 4 & above | 34,100 | 46.2 | 38.2 | 35.1 |
| | 3 & above | 49,000 | 66.2 | 57.7 | 53.9 |
| | 2 & above | 62,900 | 85.0 | 76.5 | 72.4 |
| | 1 & above | 70,300 | 95.0 | 88.4 | 84.3 |
| 2012 | 4 & above | 29,600 | 41.5 | 36.8 | 34.2 |
| | 3 & above | 45,800 | 64.2 | 56.6 | 53.1 |
| | 2 & above | 56,800 | 79.7 | 75.4 | 71.8 |
| | 1 & above | 63,100 | 88.5 | 87.7 | 83.9 |
| 2011 | 4 & above | 29,300 | 41.1 | 36.1 | 32.8 |
| | 3 & above | 43,600 | 61.2 | 55.1 | 50.8 |
| | 2 & above | 52,800 | 74.0 | 73.3 | 69.5 |
| | 1 & above | 64,200 | 90.0 | 86.6 | 82.5 |

Source: NOMIS Official Labour Market Statistics, ONS (available: <https://www.nomisweb.co.uk/>)

¹⁸ NVQ level 1 (similar to GCSE grades D–G), NVQ level 2 (similar to GCSE grades A*–C), NVQ level 3 (similar to an A Level), NVQ level 4 (similar to a Higher National Certificate (HNC)/Undergraduate)