

N

Key	Description	Surfacing
1	UniMini Rendir Safari Themed Toddler Multi-Unit	301m2 of 40mm EcoMulch, Membrane and 70mm MOT Type 1 baseworks.
2	Ely 2-seater Springer	
3	Pirouette Spinner	
4	UniPlay Aureli Safari Themed Junior Multi-Unit	
5	Vippy Seesaw	
6	Roty Inclusive Roundabout	
7	Turo Swing with Bravo Group Seat, 2no Flat Seats, Multi-Generational 2-user Tango Seat + Cradle Seat	
8	Balance Beam	grass
9	Rope Walk	grass
10	Inclined Balance Beam	grass
11	Tile Slide Snake Play Panel	grass
12	Animal Spelling Play Panel	grass
13	Essentials Inclusive Picnic Table	grass
14	Ekeby Seat	EcoMulch
15	Ellipse Litter Bin	EcoMulch

GENERAL NOTES

If not indicated on this plan, north point must be confirmed prior to installation to ensure that slides do not face due south.

No allowance has been made for soft landscaping (trees, mounds, planting, turf or general reinstatement). These should be carried out by others.

Exact positions & orientation of new items may be subject to a final site survey and setting out plan.

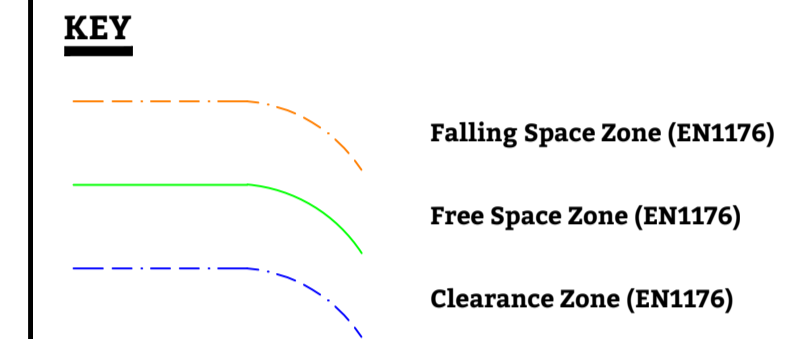
Any inconsistencies on site should be verified with HAGS before commencement of work.

HAGS recommend that existing trees are risk-assessed by the client to ensure the integrity of accessible branches, that overhanging limbs do not conflict with new play equipment or vehicle access and that the canopy will not produce excessive leaf drop which could cause a hazard within the play area.

This design layout conforms to the relevant EN Safety Standard.

RUBBER MULCH SURFACING

HAGS recommend the use of a stone base when installing rubber mulch. If installed without the finished surface will be a reflection of the ground beneath it, following any undulations, & will not be a completely flat surface. Rubber mulch will not cure any existing drainage problems & will require foundations and/or some kind of drainage system prior to installation.



henicus
s Blue"
us cneorum
s non-scripta
o. Phlomis italica
ri "Coral Beauty"
s non-scripta

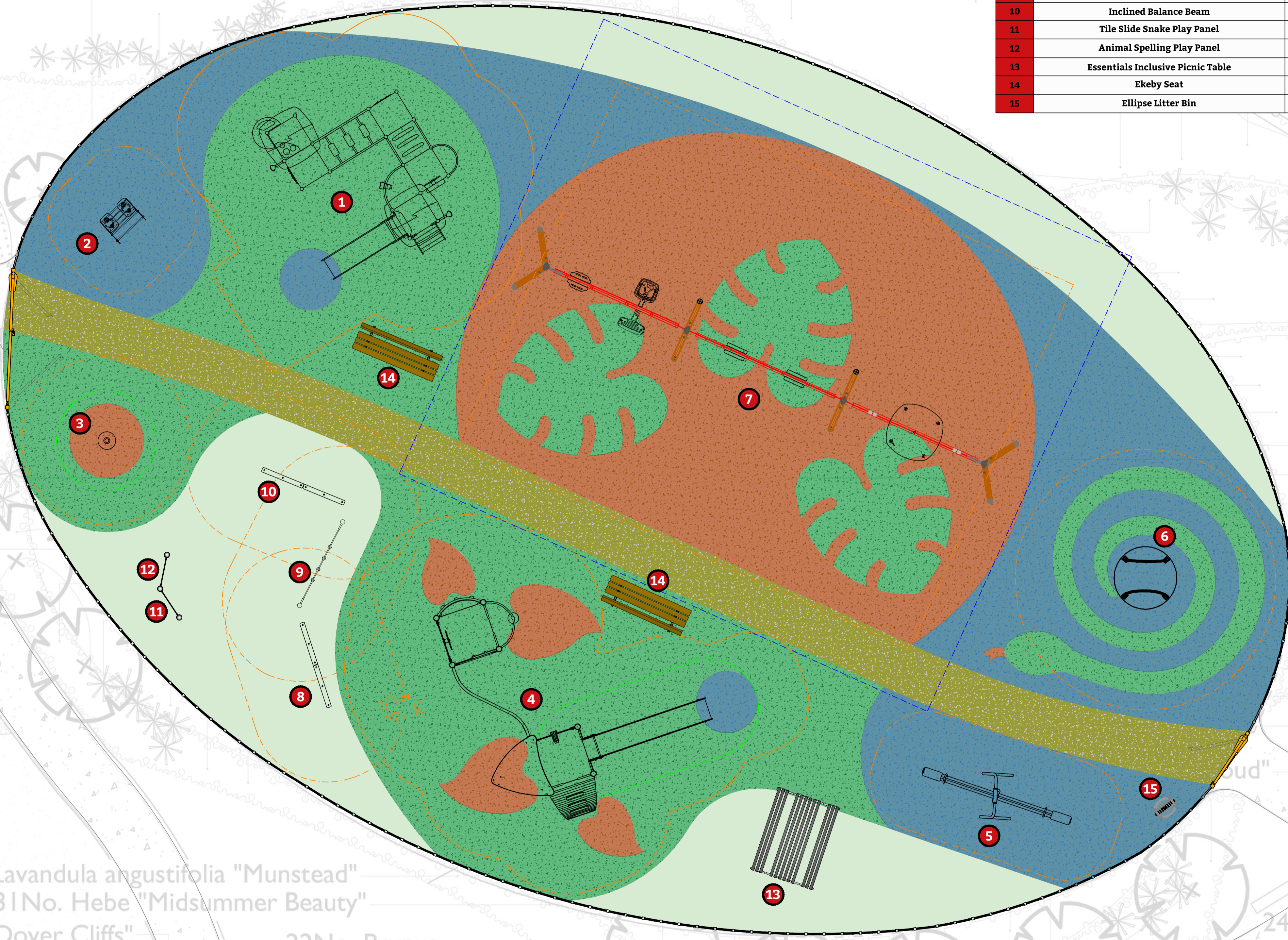
ticleer"

66No. Lavandula angustifolia "Munstead"
31No. Hebe "Midsummer Beauty"
87No. Narcissus "Dover Cliffs"
3No. Magnolia soulangiana

22No. Prunus laurocerasus "Otto Luyken"
6No. Fatsia japonica
21No. Dryopteris felix-mas

3No. Hydrangea macrophylla

24No. Lavandula angustifolia "Munstead"
27No. Pittosporum "Nanum"
22No. Potentilla fruticosa
6No. Kniphofia "Bees'Sunset"
74No. Convolvulus cneorum
19No. Echinacea purpurea "White S"
22No. Spiraea japonica "Candlelight"
63No. Hypericum "Hidcote"



REVISIONS

Revision	Date	Description	Checked by
Revision 0	30/10/19	Original	J.K.L
Revision 1	28/11/19	Amendment by J.K.L	A.G
Revision 2	09/04/20	Amendment by A.S.	A.G
Revision 3	07/07/21	Amendments by G.H.	S.T.

CUSTOMER
Test Valley B.C.

PROJECT
Picket Twenty - Area 4

TITLE
Saddle Way Play Area

HAGS

T: 0845 260 1655 E: sales@hags.co.uk W: www.hags.co.uk

DATE: 07/07/21 SCALE: 1:50 @ A1
DRAWN BY: G.H. CHECKED BY: S.T.

DRAWING NUMBER: Q-24083-Z9L0-C REVISION 3

SHEET 1 OF 1

© HAGS 2021