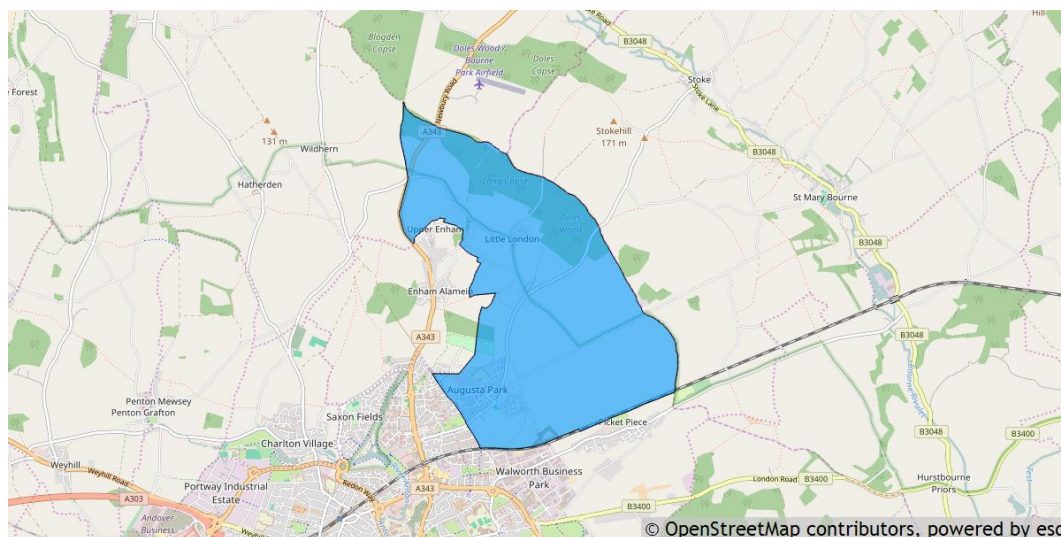


Smannell parish profile

This profile provides a summary of the latest available information on the demographic make-up of the Smannell parish within Test Valley. It looks at information on topics such as the population structure, economic, housing, health and educational information for the parish.

Smannell is one of the 59 parishes in Test Valley. It has an area of 922 hectares which represents 1.5% of the total area of Test Valley.



Elected representatives

<p>Hampshire County Councillor</p> <p>Cllr Timothy Rolt Home: 01264 358365 Mobile: 07795 204233 Email: timothy.rolt@hants.gov.uk</p>	<p>Test Valley Borough Councillors</p> <p>Cllr Alexander Brook Home: 01264 321353 Mobile: 07801 936474 Email: cllrabrook@testvalley.gov.uk</p> <p>Cllr Phil North Mobile: 07732 423023 Email: cllrpnorth@testvalley.gov.uk</p> <p>Cllr Tracey Preston Mobile: 07775 927161 Email: cllrtpreston@testvalley.gov.uk</p>
<p>Smannell Parish Council Chairman</p> <p>Cllr Rod Bowker Daytime: 01264 357201 Email: rod_bowker@hotmail.com</p>	<p>Smannell Parish Council Clerk</p> <p>Alannah Carrott Tel: 07887520214 Email: smannellpc@gmail.com</p>

Residents

The estimated 2016 population of Smannell parish is 3,065. This is expected to rise to 4,256 by 2021 (an increase of 38.9%).

Smannell's resident population is 51.0% female and 49.0% male.

Young people (0-19) currently make up 33.4% of Smannell's population; this is expected to remain the same up to 2022.

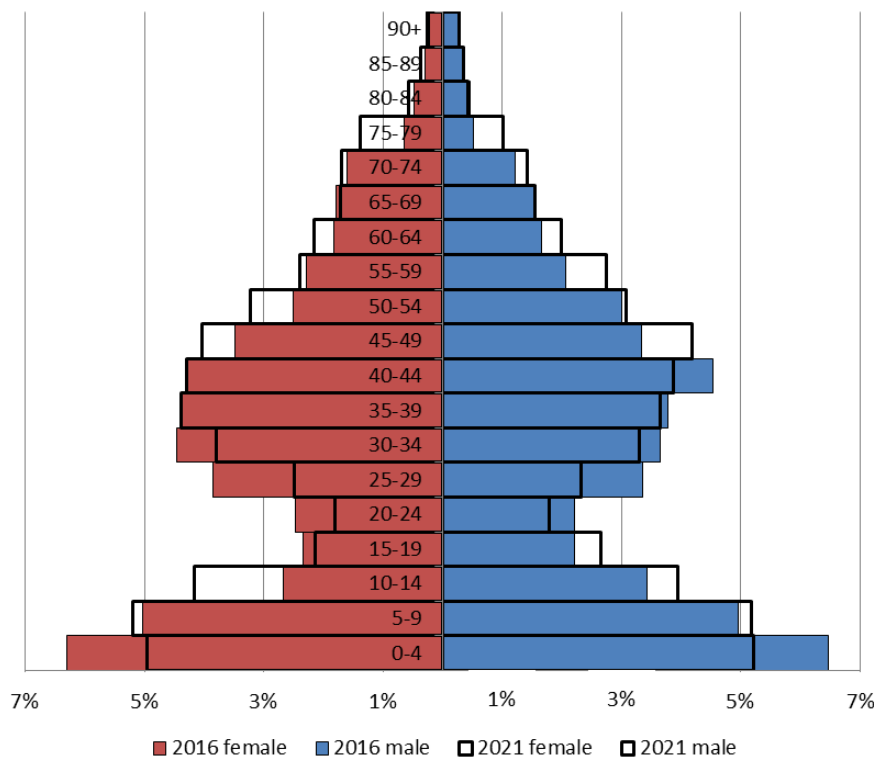
Young adults (20-39) currently make up 28.2% of the parish's population; this is expected to fall to 23.5% by 2021.

Middle aged residents (40-64) currently account for 29.0% of Smannell's population; this is expected to increase 32.0% by 2021.

Those **aged 65 and over** make up 9.4% of the parish's population; this is expected to rise to 11.0% by 2021.

Those **aged 85 and over** currently represent 1.1% of the population; this is expected to increase slightly to 1.3% by 2021.

Age of parish population



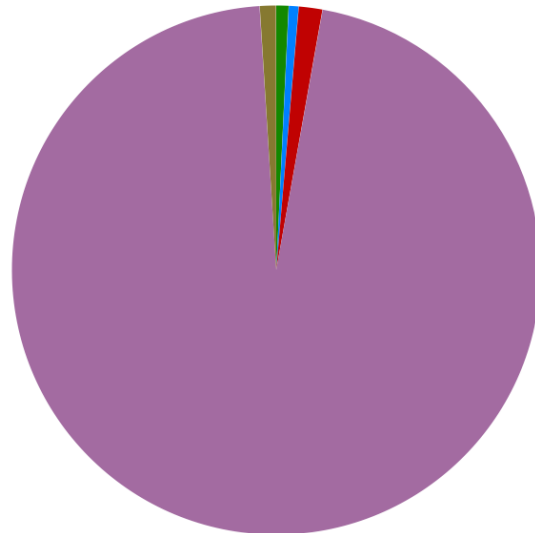
Ethnicity

The largest ethnic group in Smannell is “White” at 96.2% of the parish's population. That compares with a figure of 95.9% for Test Valley as a whole and 95.0% for Hampshire.

The second largest ethnic group (1.4%) is “Mixed/multiple”. That compares with 1.3% for Test Valley as a whole and 1.4% for Hampshire

Residents by ethnicity (count)

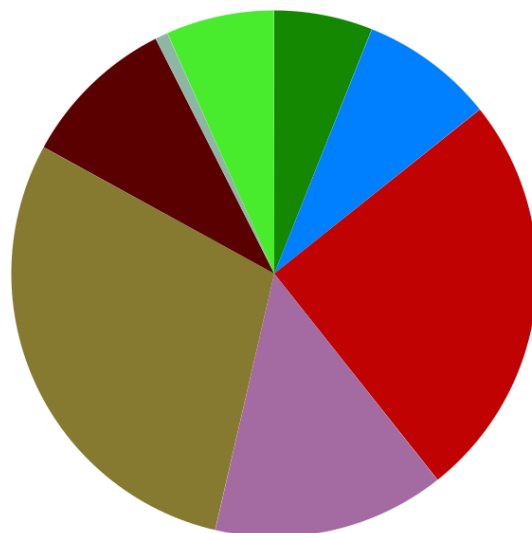
Residents who are Asian/Asian British	10
Residents who are Black/African/Caribbean/Black British	8
Residents who are Mixed/multiple ethnic groups	19
Residents who are White	1,268
Residents who are Other ethnic group	13



Powered by esd

Households

Smannell parish has **511 households**, which represent 1.1% of Test Valley's 47,626 households. The household split by tenure is shown below (tenure refers to the financial arrangements under which a home is occupied).

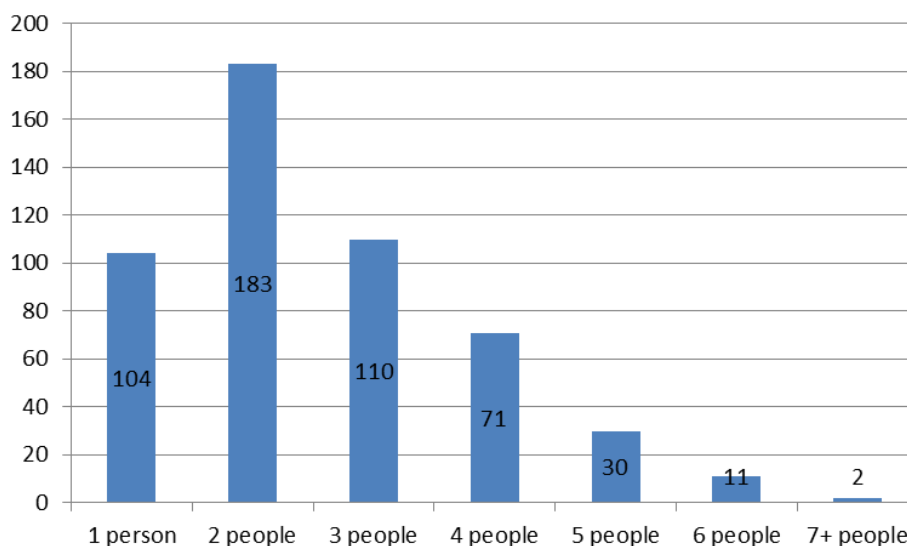


Powered by esd

The largest proportion of properties (43.6%) are **owned by those who live in them**. This is lower than the Test Valley average of 70.4%.

17.8% of Smannell households are **privately rented**, and 31.1% are **socially rented**. This compares to 12.9% and 14.4% respectively across Test Valley.

Households by number of residents



35.8% of Smannell's households are occupied by two people, and 20.4% by one person. 43.8% of the parish's households are occupied by more than two people.

Smannell has 127 households with **dependent children aged 0 to 4**. That represents 24.9% of the parish's households.

221 households in the parish have **dependent children of all ages**. That represents 43.3% of the parish's households.

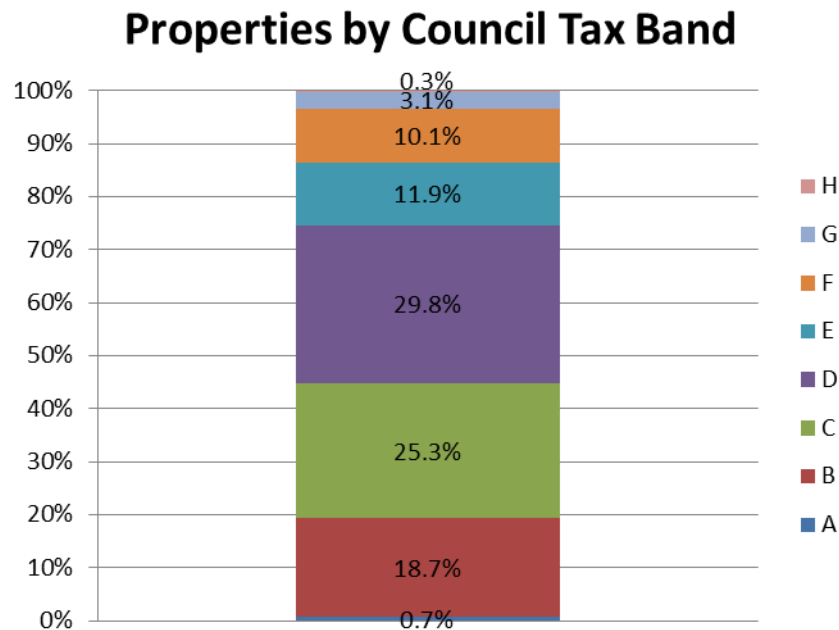
House prices

According to Zoopla, the average house prices (as of September 2016) in the villages of Smannell parish are:

- In **Smannell** the average house price is **£766,106**. This has increased by 23.7% in the last five years.
- In **Little London** the average house price is **£500,028**. This has increased by 23.1% in the last five years.

It is estimated that **40.4% of households in the Andover area of Test Valley cannot afford to buy a private property**. The Andover area includes the wards of Alamein, Charlton, Harroway, Millway, St Mary's and Winton.

Council Tax Bands



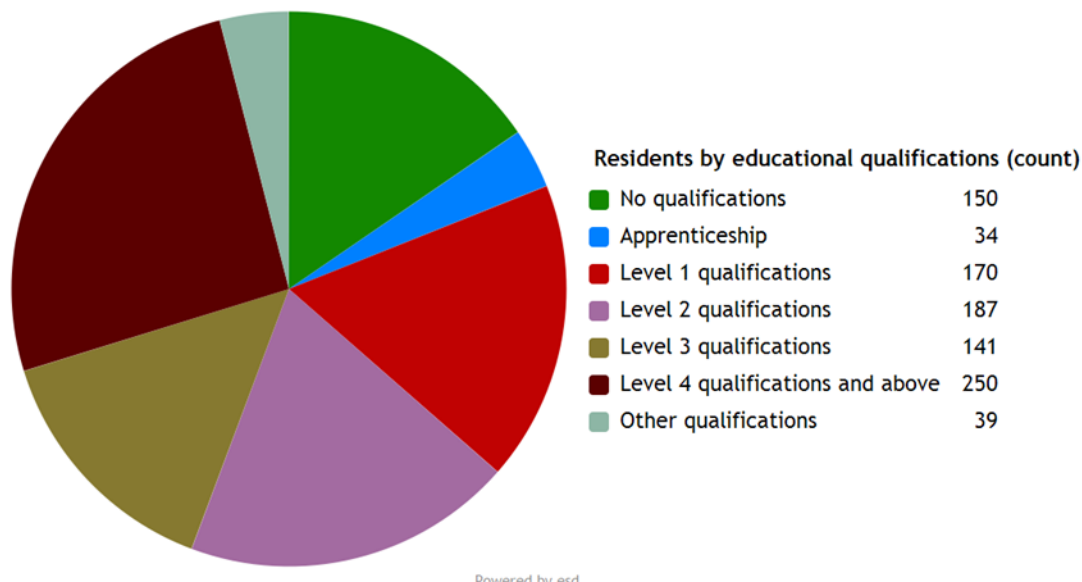
19.4% of Smannell properties are at the **lower** end of the property market (Bands A and B). This compares to 22.2% for Test Valley as a whole.

67.0% of the parish's properties are in the **middle** range of the property market (Bands C to E). This compares to 60.8% across the whole borough.

13.5% of Smannell's properties are at the **higher** end of the property market (Bands F to H). This compares to 17.1% of all Test Valley properties.

Education

25.8% of Smannell's residents have achieved **level 4 qualifications** and above compared to 30.5% in Test Valley as a whole. 15.5% of Smannell's residents have **no qualifications** compared to 18.4% in Test Valley.



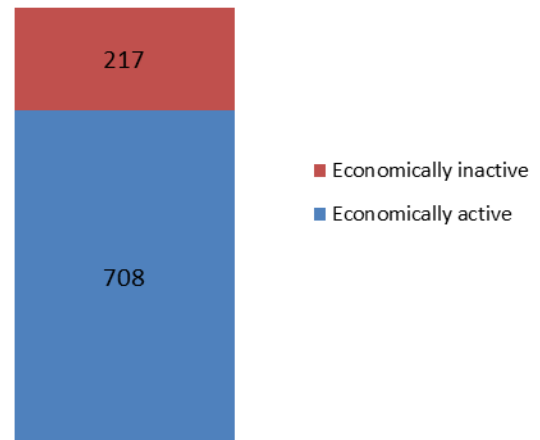
No qualifications	No academic or professional qualifications.
Level 1	1+O level passes, 1+CSE/GCSE any grades, NVQ level 1, Basic/Essential skills, NVQ Level 1.
Level 2	5+O level passes, 5+GCSEs (grades A*-C), 1 A level, 2-3 AS levels, City and Guilds Craft, NVQ level 2.
Level 3	2+A levels, Higher School Certificate, NVQ level 3, City and Guilds Advanced Craft, BTEC National.
Level 4/5	Degree (e.g. BA, BSc) higher degree (e.g. MA, PhD, PGCE), NVQ levels 4 and 5, qualified teacher, nurse or accountant status, BTEC Higher.
Other qualification	Level unknown, vocational/work-related qualifications, foreign qualifications.

Employment

75.5% of Smannell residents aged 16-74 are **economically active**, compared to 73.4% of Test Valley residents. This includes people in full, part and self-employment, those who are actively seeking a job, and full-time students.

The remaining 24.5% of residents aged 16-74 are **economically inactive**, compared to 26.6% of Test Valley residents. This includes people who are retired, long-term sick or disabled, or who look after the home and family.

Economic activity (count)

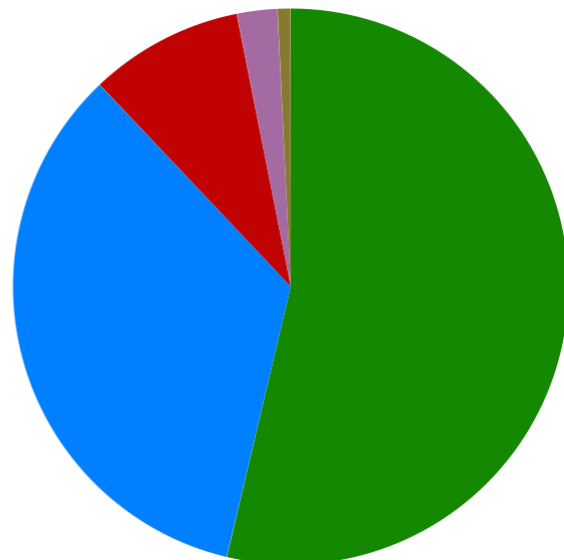


Health

Smannell has 31 (2.4%) residents that report being in **bad health** and 10 (0.8%) residents that report being in **very bad health**.

Residents by level of health (count)

Very good health	708
Good health	451
Fair health	118
Bad health	31
Very bad health	10



Powered by esd

Community plans

Details of any community planning exercises your parish is undertaking can be added here. Please get in touch with the Policy Team at the email address below and we will be more than happy to add information at your request.

Local facilities

Food stores	None
Other shops	None
Primary schools	Smannell and Enham Church of England Primary School Endeavour Primary School
Secondary schools	None
Health facilities	None
Leisure facilities	Finkley Down Farm
Public houses	The Oak
Community facilities	Augusta Park Community Centre
Churches	Christ Church
Local recycling centres	Augusta Park Community Centre

Public and community transport

Cango service C3

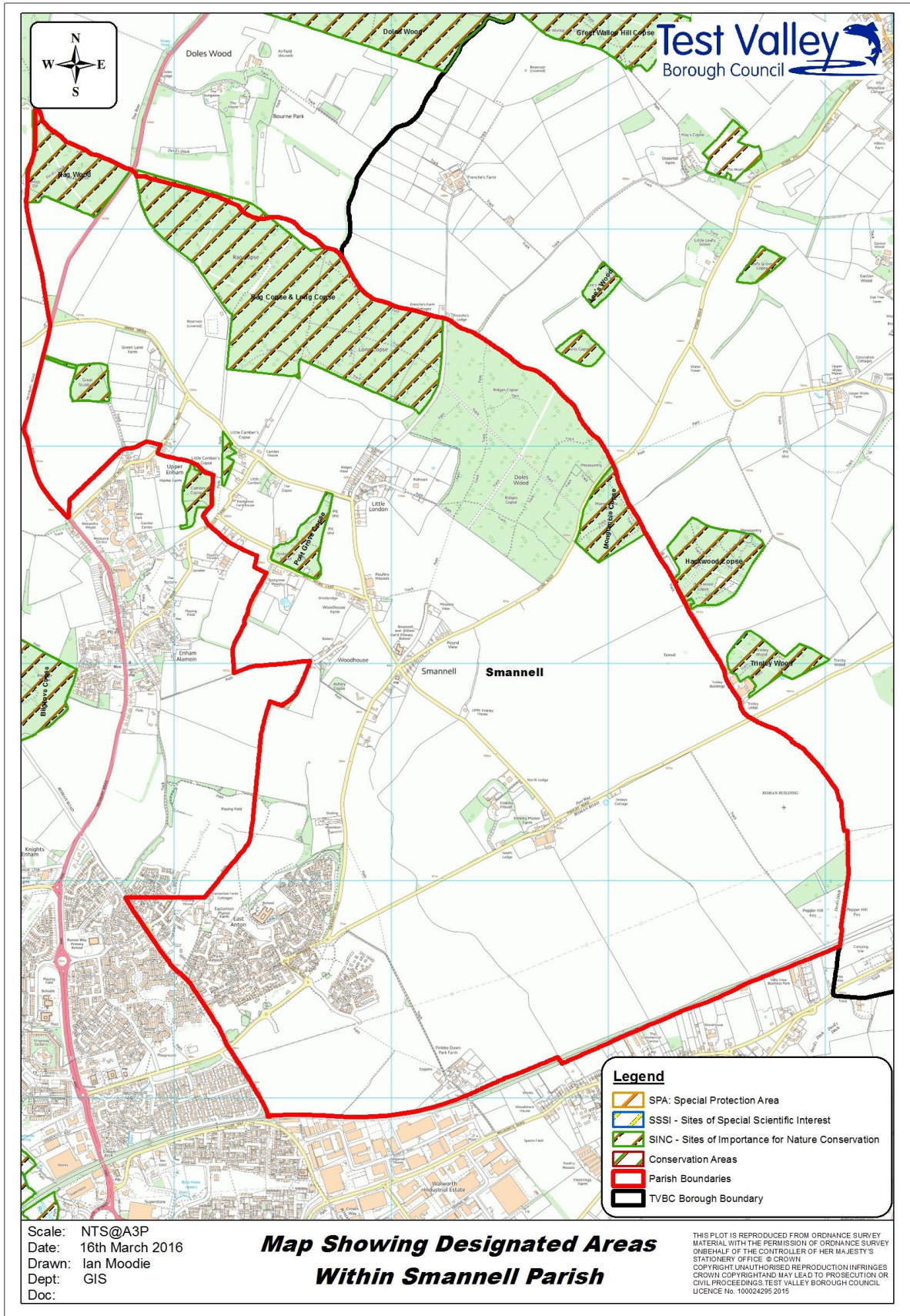
This bus service runs between Andover bus station and Enham Alamein via several Test Valley villages, including Smannell.

More information about the route and the timetable can be found online at:

<http://bit.ly/2epJfMV>

Further community transport information for Test Valley can be found on Hampshire County Council's website:

<http://bit.ly/2ecJuLK>



Additional information

The information in this profile has been prepared by Test Valley Borough Council's Policy Team in partnership with the Local Government Association. If you would like further information, please contact the Policy Team on 01264 368000 or policyteam@testvalley.gov.uk, and we will be happy to work with you to provide a more detailed profile.

This profile contains key information for you to use to contribute to the development of a Neighbourhood Plan or other community project. If you know of any additional information about the parish that may be of use (for example, information on local facilities) please get in touch and we will endeavor to work with you to add to or change the profile.

Please note that most of the data featured in this profile is taken from the 2011 Census, whilst the population data is taken from Hampshire County Council's 2016 Small Area Population Forecast. Therefore, there is some discrepancy in population figures.