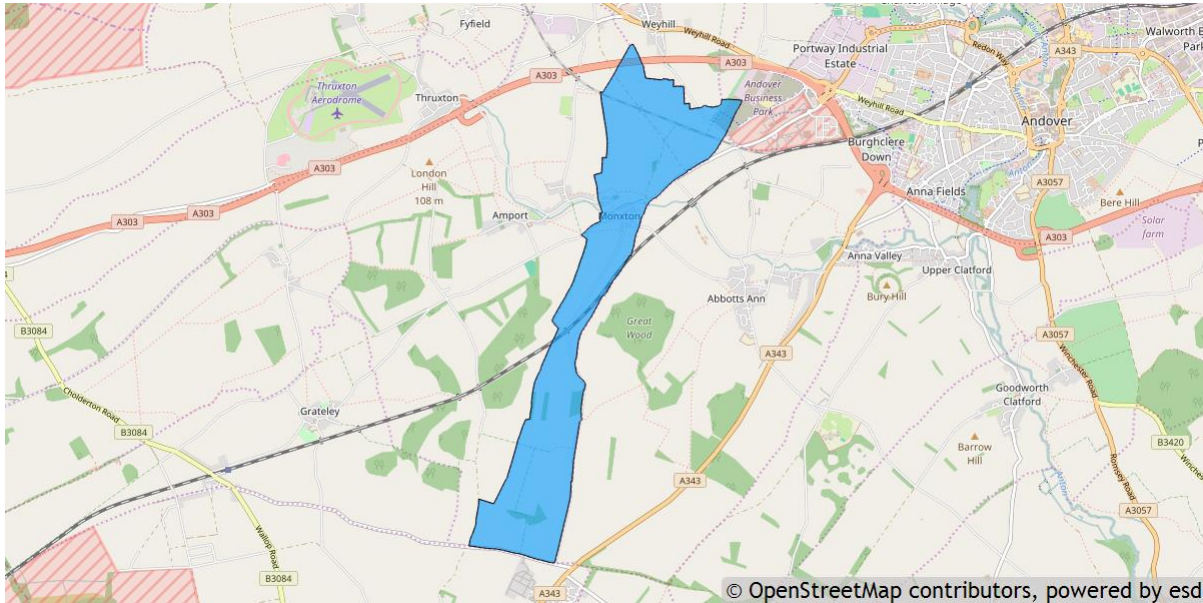


## Monxton parish profile

This profile provides a summary of the latest available information on the demographic make-up of the Monxton parish within Test Valley. It looks at information on topics such as the population structure, economic, housing, health and educational information for the parish.

Monxton is one of the 59 parishes in Test Valley. It has an area of 449 hectares which represents 0.7% of the total area of Test Valley.



### Elected representatives

<p><b>Hampshire County Councillor</b></p> <p><b>Cllr Zilliah Brooks</b> Home: 01264 335388 Email: <a href="mailto:zilliah.brooks@hants.gov.uk">zilliah.brooks @hants.gov.uk</a></p>	<p><b>Test Valley Borough Councillor</b></p> <p><b>Cllr Ben Few-Brown</b> Home: 01980 629569 Mobile: 07889 806707 Email: <a href="mailto:cllrbfewbrown@testvalley.gov.uk">cllrbfewbrown@testvalley.gov.uk</a></p>
<p><b>Monxton Parish Council Chairman</b></p> <p><b>Cllr Mike Cleugh</b> Home: 01264 710276 Email: <a href="mailto:mikecleugh@hotmail.com">mikecleugh@hotmail.com</a></p>	<p><b>Monxton Parish Council Clerk</b></p> <p><b>Mr Richard Waterman</b> Home: 01264 772460 Mobile: 07777 678485 Email: <a href="mailto:richard.waterman150@btinternet.com">richard.waterman150@btinternet.com</a></p>

## Residents

The estimated 2016 population of Monxton parish is 270. This is expected to fall slightly to 269 by 2021 (a decrease of 0.4%).

Monxton 's resident population is 51.9% female and 48.1% male.

**Young people (0-19)** currently make up 21.5% of Monxton's population; this is expected to rise to 23.8% by 2021.

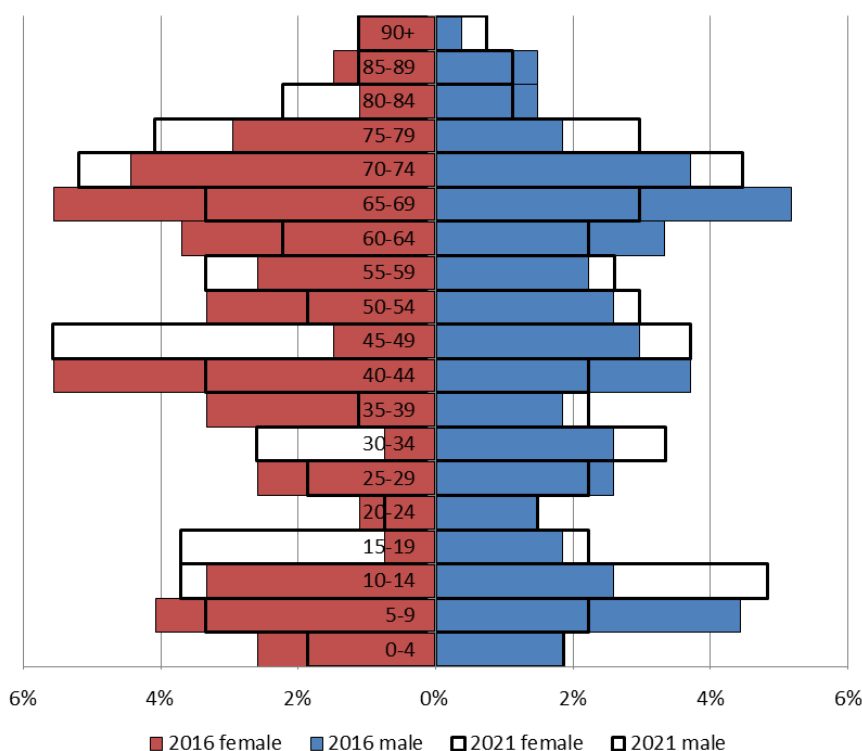
**Young adults (20-39)** currently make up 16.3% of the parish's population; this is expected to decrease slightly to 15.6% by 2021.

**Middle aged residents (40-64)** currently account for 31.5% of Monxton's population; this is expected to drop to 30.1% by 2021.

Those **aged 65 and over** make up 30.7% of the parish's population; this is expected to fall slightly to 30.5% by 2021.

Those **aged 85 and over** currently represent 4.4% of the population; this is expected to fall slightly to 4.1% by 2021.

### Age of parish population

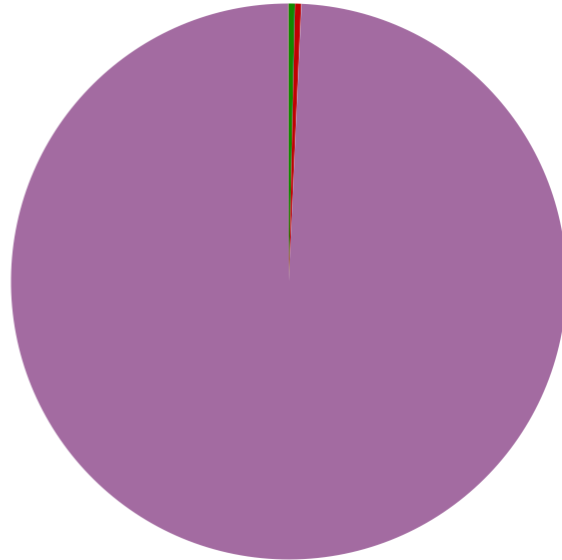


## Ethnicity

The largest ethnic group in Monxton is “White” at 99.3% of the parish's population. That compares with a figure of 95.9% for Test Valley as a whole and 95.0% for Hampshire.

### Residents by ethnicity (count)

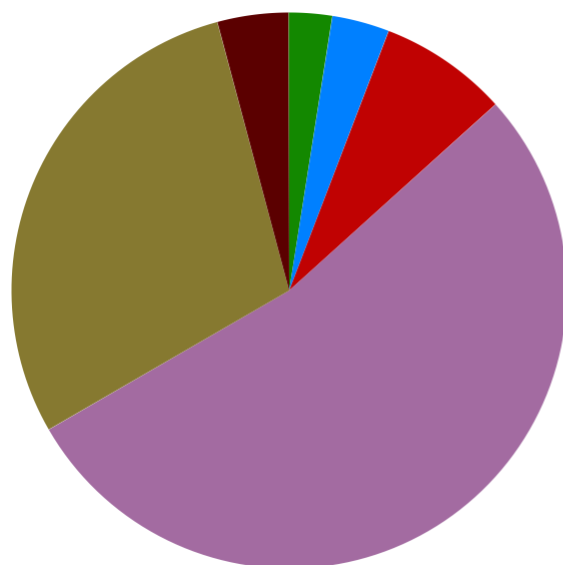
Residents who are Asian/Asian British	1
Residents who are Black/African/Caribbean/Black British	0
Residents who are Mixed/multiple ethnic groups	1
Residents who are White	275
Residents who are Other ethnic group	0



Powered by esd

## Households

Monxton parish has **120 households**, which represent 0.3% of Test Valley's 47,626 households. The household split by tenure is shown below (tenure refers to the financial arrangements under which a home is occupied).

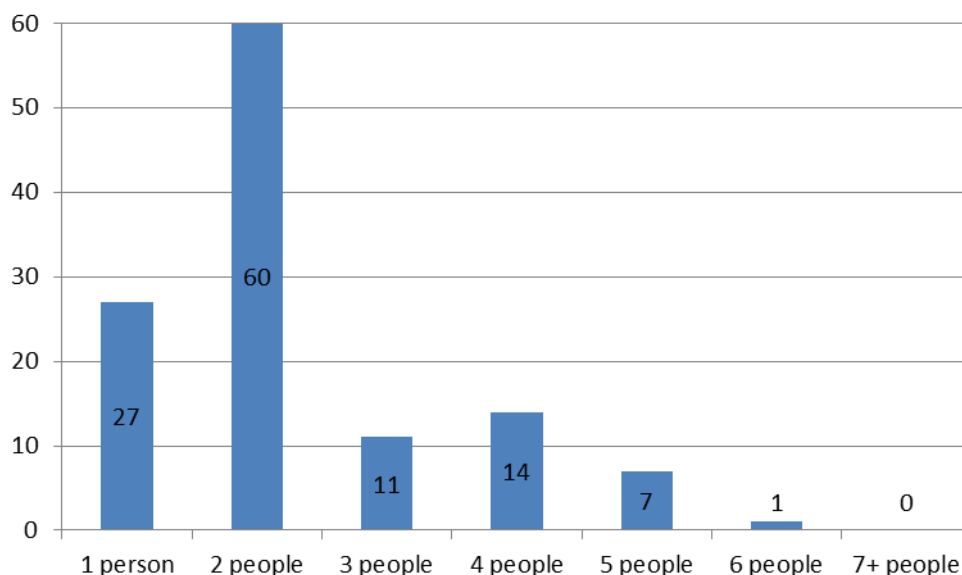


Powered by esd

The majority of properties (82.5%) are **owned by those who live in them**. This is higher than the Test Valley average of 70.4%.

7.5% of Monxton households are **privately rented**, and 9.2% are **socially rented**. This compares to 12.9% and 14.4% respectively across Test Valley.

### Households by number of residents



50.0% of Monxton's households are occupied by two people, and 22.5% by one person. 27.5% of the parish's households are occupied by more than two people.

Monxton has 15 households with **dependent children aged 0 to 4**. That represents 12.5% of the parish's households.

25 households in the parish have **dependent children of all ages**. That represents 20.8% of the parish's households.

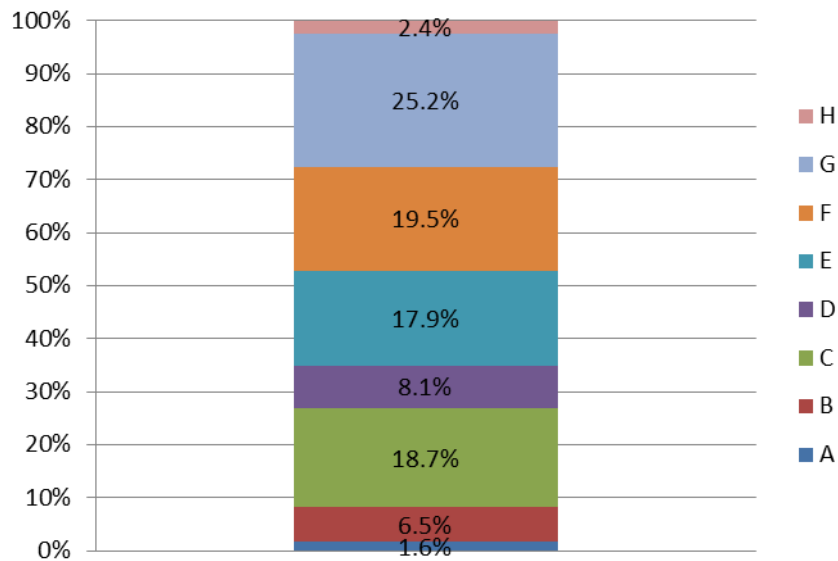
### House prices

According to Zoopla, the average house price in Monxton (as of September 2016) is **£777,374**. This has increased by 23.1% in the last five years.

It is estimated that **38.2% of households in north rural Test Valley cannot afford to buy a private property**. The central rural area includes the wards of Amport, Anna, Bourne Valley, Harewood, Over Wallop, and Penton Bellinger.

## Council Tax Bands

### Properties by Council Tax Band



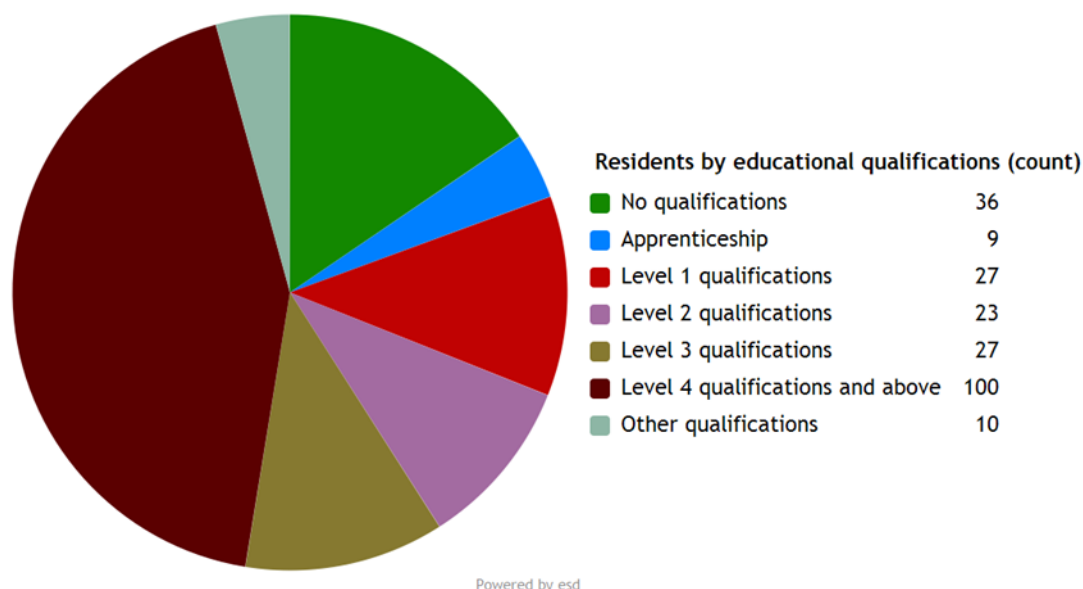
8.1% of Monxton properties are at the **lower** end of the property market (Bands A and B). This compares to 22.2% for Test Valley as a whole.

44.7% of the parish's properties are in the **middle** range of the property market (Bands C to E). This compares to 60.8% across the whole borough.

47.1% of Monxton's properties are at the **higher** end of the property market (Bands F to H). This compares to 17.1% of all Test Valley properties.

## Education

43.1% of Monxton's residents have achieved **level 4 qualifications** and above compared to 30.5% in Test Valley as a whole. 15.5% of Monxton's residents have **no qualifications** compared to 18.4% in Test Valley.



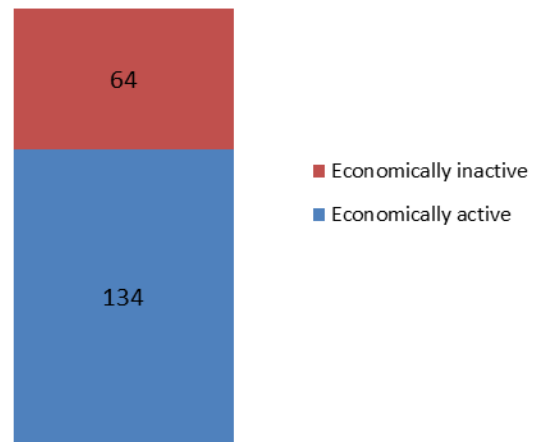
No qualifications	No academic or professional qualifications.
Level 1	1+O level passes, 1+CSE/GCSE any grades, NVQ level 1, Basic/Essential skills, NVQ Level 1.
Level 2	5+O level passes, 5+GCSEs (grades A*-C), 1 A level, 2-3 AS levels, City and Guilds Craft, NVQ level 2.
Level 3	2+A levels, Higher School certificate, NVQ level 3, City and Guilds Advanced Craft, BTEC National.
Level 4/5	Degree (e.g. BA, BSc) higher degree (e.g. MA, PhD, PGCE), NVQ levels 4 and 5, qualified teacher, nurse or accountant status, BTEC Higher.
Other qualification	Level unknown, vocational/work-related qualifications, foreign qualifications.

## Employment

67.7% of Monxton residents aged 16-74 are **economically active**, compared to 73.4% of Test Valley residents. This includes people in full, part and self-employment, those who are actively seeking a job, and full-time students.

The remaining 32.3% of residents aged 16-74 are **economically inactive**, compared to 26.6% of Test Valley residents. This includes people who are retired, long-term sick or disabled, or who look after the home and family.

## Economic activity (count)

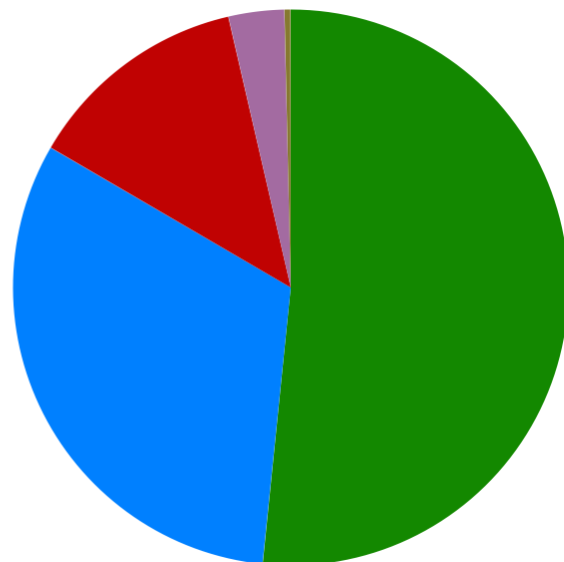


## Health

Monxton has 9 (3.3%) residents that report being in **bad health** and 1 (0.4%) residents that report being in **very bad health**.

### Residents by level of health (count)

Very good health	143
Good health	88
Fair health	36
Bad health	9
Very bad health	1



Powered by esd

## Community plans

Monxton has a **Village Design Statement** which was adopted by Test Valley Borough Council in April 2000 as Supplementary Planning Guidance. The design statement provides a description of the natural and man-made features of the village of Monxton that are regarded by the members of the community as particularly distinctive. The document provides a guide to ensure that future development and change is managed to respect and preserve the character and distinctiveness of the village. It should thus contribute positively to protecting and enhancing the special nature and qualities of the community that is Monxton today.

This document is available on the Council's website at the following page:

<http://bit.ly/2dG3jun>

Details of any community planning exercises your parish is undertaking can be added here. Please get in touch with the Policy Team at the email address below and we will be more than happy to add information at your request.

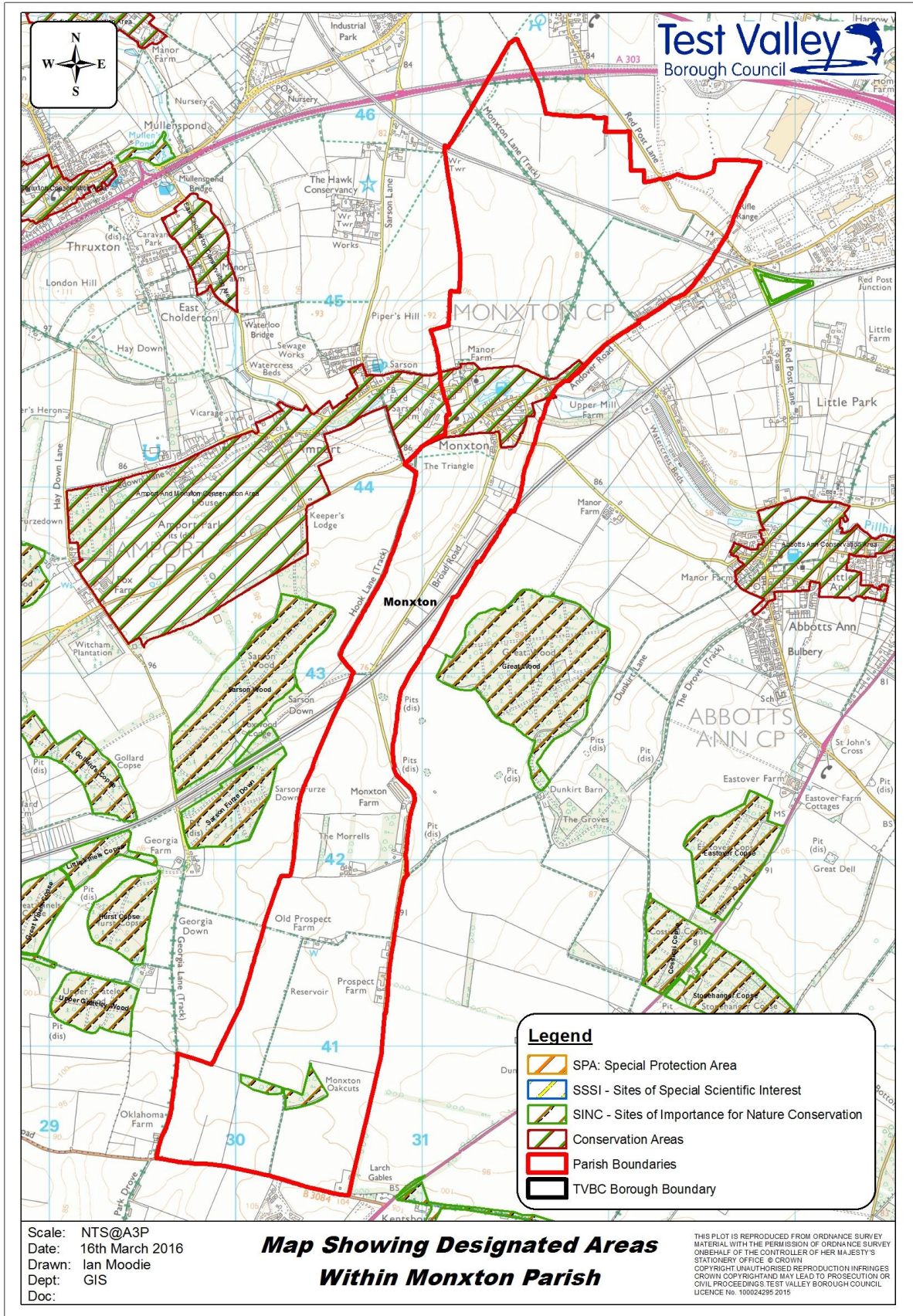
## Local facilities

<b>Food stores</b>	None
<b>Other shops</b>	None
<b>Primary schools</b>	None
<b>Secondary schools</b>	None
<b>Health facilities</b>	None
<b>Leisure facilities</b>	None
<b>Public houses</b>	The Black Swan
<b>Community facilities</b>	Monxton Village Hall
<b>Churches</b>	St Mary's Church
<b>Local recycling centres</b>	None



## Public and community transport

<p><b>Stagecoach number 5</b></p> <p>This bus service operates from Andover bus station and stops at various villages in Northwest Test Valley, including Monxton.</p> <p>For more information please visit:</p> <p><a href="http://bit.ly/2enF7hw">http://bit.ly/2enF7hw</a></p>	<p><b>Amport, Monxton, Grateley, Quarley Neighbourcare Group</b></p> <p>A voluntary car scheme which offers to take residents to medical appointments, shopping and leisure visits.</p> <p>For more information please visit:</p> <p><a href="http://bit.ly/2eeVL4G">http://bit.ly/2eeVL4G</a></p>
<p>Further community transport information for Test Valley can be found on Hampshire County Council's website:</p> <p><a href="http://bit.ly/2ecJuLK">http://bit.ly/2ecJuLK</a></p>	



## **Additional information**

The information in this profile has been prepared by Test Valley Borough Council's Policy Team in partnership with the Local Government Association. If you would like further information, please contact the Policy Team on 01264 368000 or [policyteam@testvalley.gov.uk](mailto:policyteam@testvalley.gov.uk), and we will be happy to work with you to provide a more detailed profile.

This profile contains key information for you to use to contribute to the development of a Neighbourhood Plan or other community project. If you know of any additional information about the parish that may be of use (for example, information on local facilities) please get in touch and we will endeavor to work with you to add to or change the profile.

Please note that most of the data featured in this profile is taken from the 2011 Census, whilst the population data is taken from Hampshire County Council's 2016 Small Area Population Forecast. Therefore, there is some discrepancy in population figures.