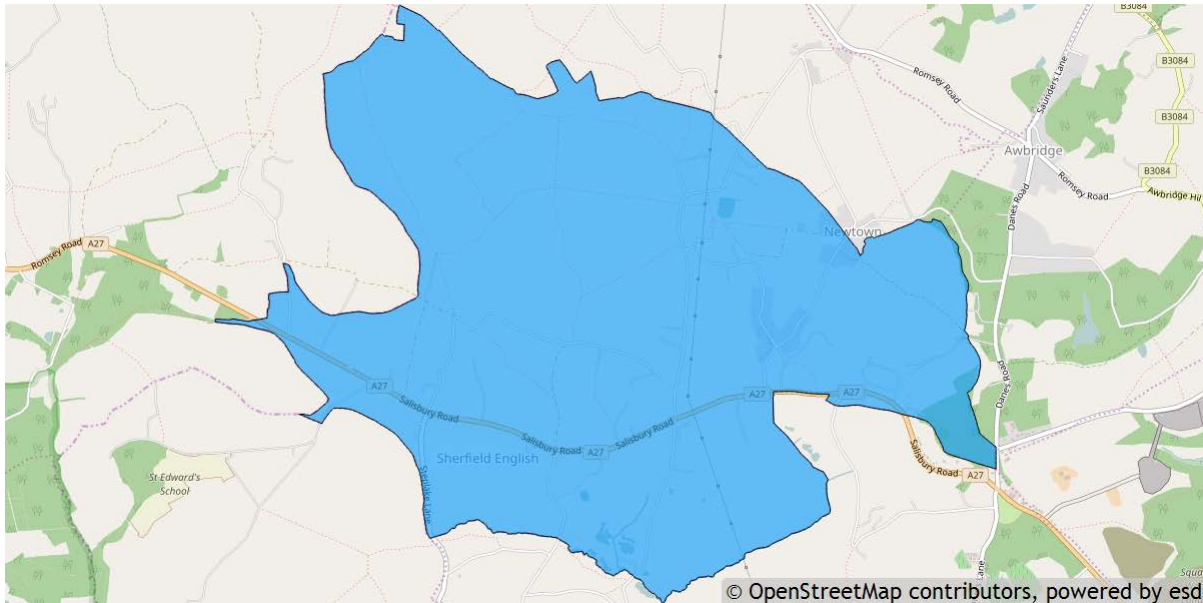


Sherfield English parish profile

This profile provides a summary of the latest available information on the demographic make-up of the Sherfield English parish within Test Valley. It looks at information on topics such as the population structure, economic, housing, health and educational information for the parish.

Sherfield English is one of the 59 parishes in Test Valley. It has an area of 853 hectares which represents 1.4% of the total area of Test Valley.



Elected representatives

<p>Hampshire County Councillor</p> <p>Cllr Roy Perry Home: 01794 322472 Office: 01962 847750 Email: roy.perry@hants.gov.uk</p>	<p>Test Valley Borough Councillors</p> <p>Cllr Gordon Bailey Home: 01794 323557 Mobile: 07802 424731 Email: cllrqbailey@testvalley.gov.uk</p> <p>Cllr Nick Adams-King Home: 01794 516341 Mobile: 07771 727402 Email: cllrnadams-king@testvalley.gov.uk</p>
<p>Sherfield English Parish Council Chairman</p> <p>Cllr Graham Leigh Daytime: 01794 323325 Email: g.leigh595@btinternet.com</p>	<p>Sherfield English Parish Council Clerk</p> <p>Mrs Sue Holder Daytime: 01794 340130 Email: sherfieldenglish.clerk@yahoo.co.uk</p>

Residents

The estimated 2016 population of Sheffield English parish is 692. This is expected to fall slightly to 689 by 2021 (a decrease of 0.4%).

Sheffield English's resident population is 52.3% female and 47.7% male.

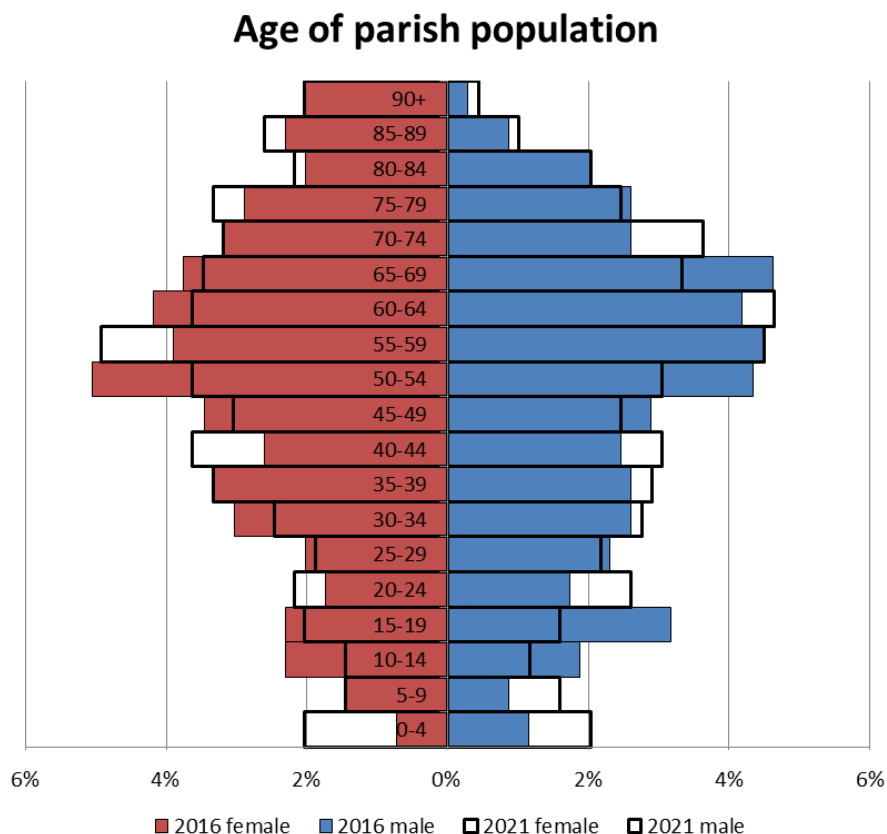
Young people (0-19) currently make up 13.9% of Sheffield English's population; this is expected to fall to 13.4% by 2021.

Young adults (20-39) currently make up 19.4% of the parish's population; this is expected to increase to 20.3% by 2021.

Middle aged residents (40-64) currently account for 37.6% of Sheffield English's population; this is expected to fall to 36.6% by 2021.

Those **aged 65 and over** make up 29.2% of the parish's population; this is expected to rise to 29.8% by 2021.

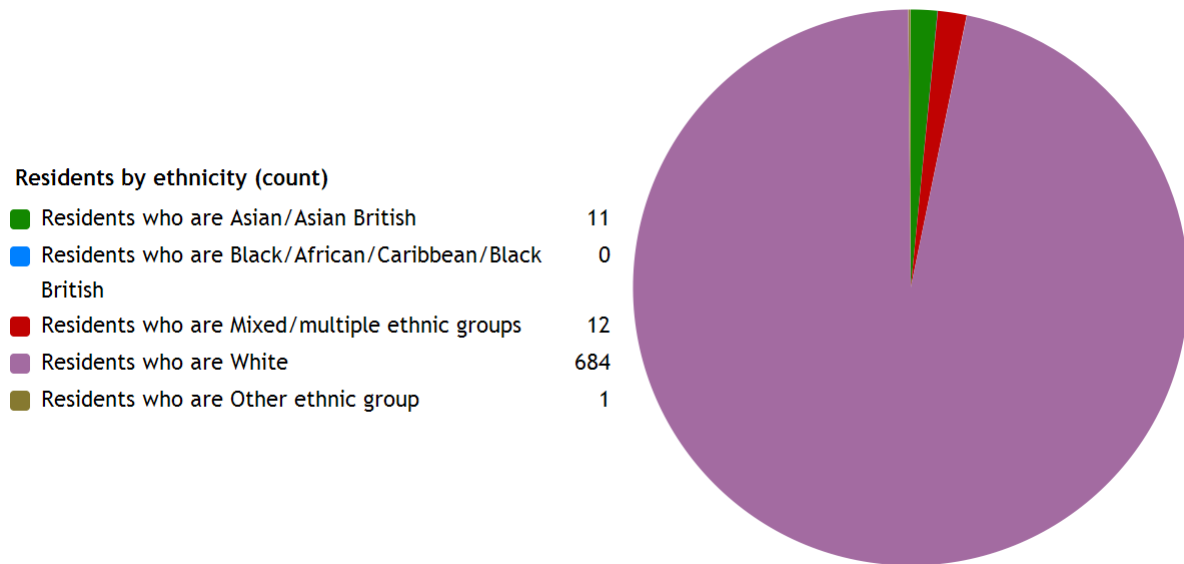
Those **aged 85 and over** currently represent 5.5% of the population; this is expected to increase to 6.1% by 2021.



Ethnicity

The largest ethnic group in Sherfield English is “White” at 96.6% of the parish's population. That compares with a figure of 95.9% for Test Valley as a whole and 95.0% for Hampshire.

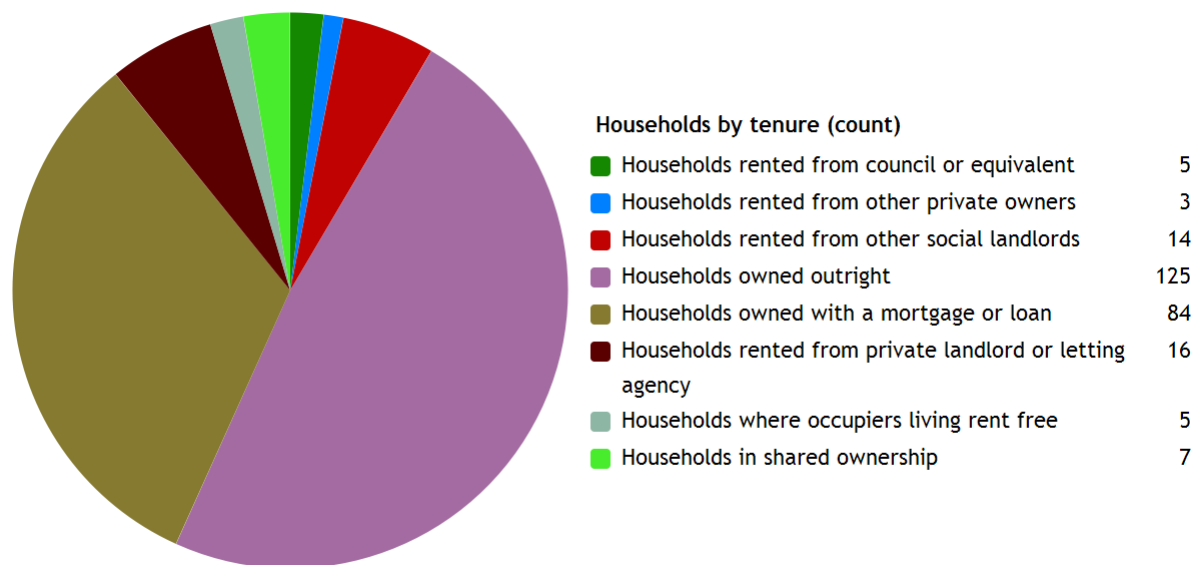
The second largest ethnic group (1.7%) is “Mixed/multiple”. That compares with 1.3% for Test Valley as a whole and 1.4% for Hampshire.



Powered by esd

Households

Sherfield English parish has **259 households**, which represent 0.5% of Test Valley's 47,626 households. The household split by tenure is shown below (tenure refers to the financial arrangements under which a home is occupied).

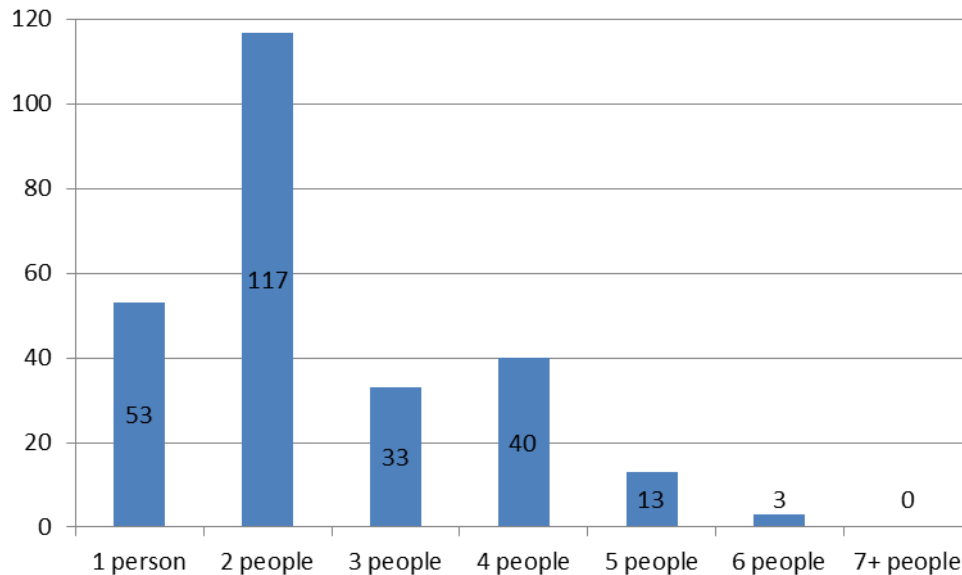


Powered by esd

The majority of properties (80.7%) are **owned by those who live in them**. This is higher than the Test Valley average of 70.4%.

7.3% of Sherfield English households are **privately rented**, and 7.3% are **socially rented**. This compares to 12.9% and 14.4% respectively across Test Valley.

Households by number of residents



45.2% of Sherfield English's households are occupied by two people, and 20.5% by one person. 34.4% of the parish's households are occupied by more than two people.

Sherfield English has 15 households with **dependent children aged 0 to 4**. That represents 5.8% of the parish's households.

60 households in the parish have **dependent children of all ages**. That represents 23.2% of the parish's households.

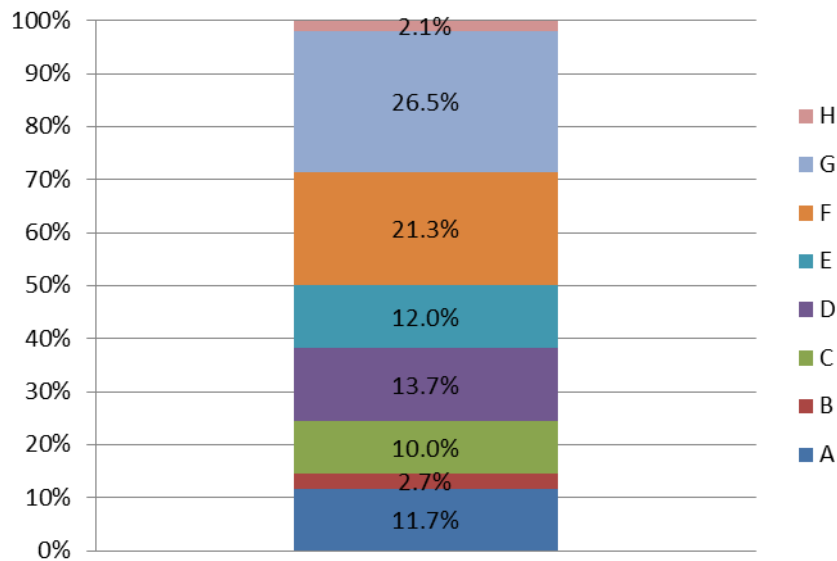
House prices

According to Zoopla, the average house price in the village of Sherfield English (as of September 2016) is **£699,203**. This has increased by 19.8% in the last five years.

It is estimated that **39.4% of households in central rural Test Valley cannot afford to buy a private property**. The central rural area includes the wards of Blackwater, Broughton and Stockbridge, Dun Valley, and Kings Somborne and Michelmersh.

Council Tax Bands

Properties by Council Tax Band



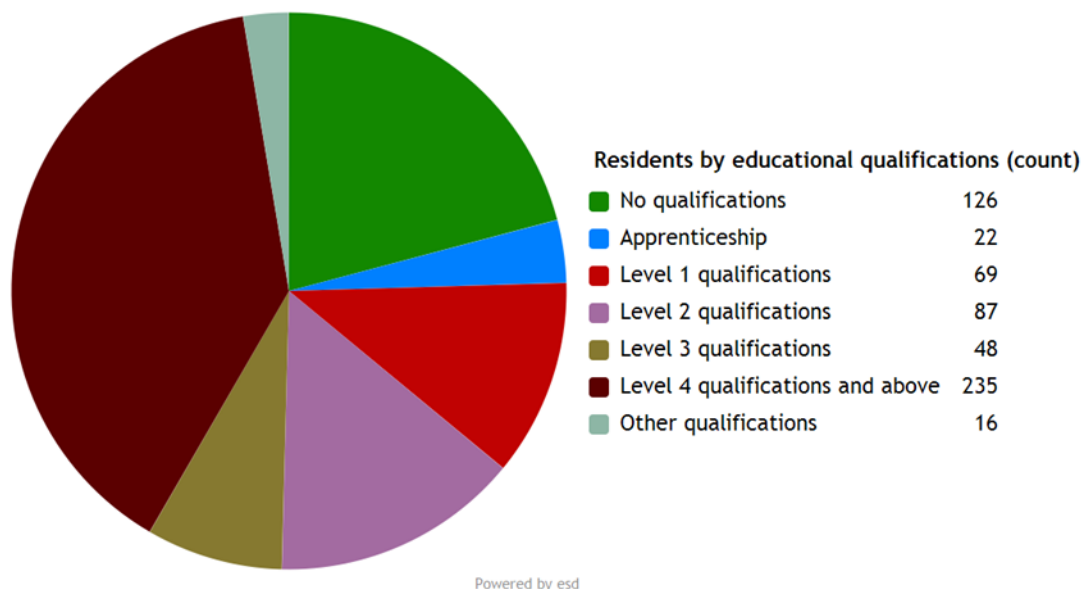
14.4% of Sherfield English properties are at the **lower** end of the property market (Bands A and B). This compares to 22.2% for Test Valley as a whole.

35.7% of the parish's properties are in the **middle** range of the property market (Bands C to E). This compares to 60.8% across the whole borough.

49.9% of Sherfield English's properties are at the **higher** end of the property market (Bands F to H). This compares to 17.1% of all Test Valley properties.

Education

39.0% of Sheffield English's residents have achieved **level 4 qualifications** and above compared to 30.5% in Test Valley as a whole. 20.9% of Sheffield English's residents have **no qualifications** compared to 18.4% in Test Valley.



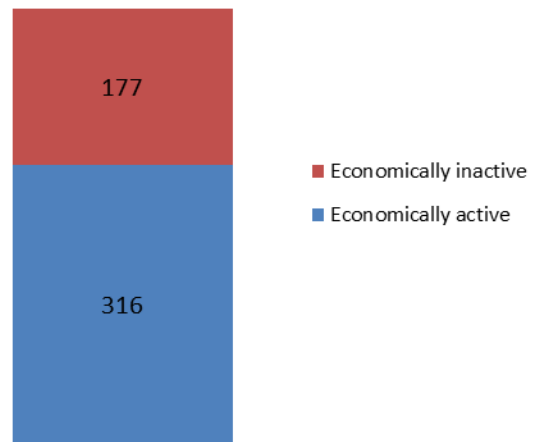
No qualifications	No academic or professional qualifications.
Level 1	1+O level passes, 1+CSE/GCSE any grades, NVQ level 1, Basic/Essential skills, NVQ Level 1.
Level 2	5+O level passes, 5+GCSEs (grades A*-C), 1 A level, 2-3 AS levels, City and Guilds Craft, NVQ level 2.
Level 3	2+A levels, Higher School Certificate, NVQ level 3, City and Guilds Advanced Craft, BTEC National.
Level 4/5	Degree (e.g. BA, BSc) higher degree (e.g. MA, PhD, PGCE), NVQ levels 4 and 5, qualified teacher, nurse or accountant status, BTEC Higher.
Other qualification	Level unknown, vocational/work-related qualifications, foreign qualifications.

Employment

64.1% of Sheffield English residents aged 16-74 are **economically active**, compared to 73.4% of Test Valley residents. This includes people in full, part and self-employment, those who are actively seeking a job, and full-time students.

The remaining 35.9% of residents aged 16-74 are **economically inactive**, compared to 26.6% of Test Valley residents. This includes people who are retired, long-term sick or disabled, or who look after the home and family.

Economic activity (count)

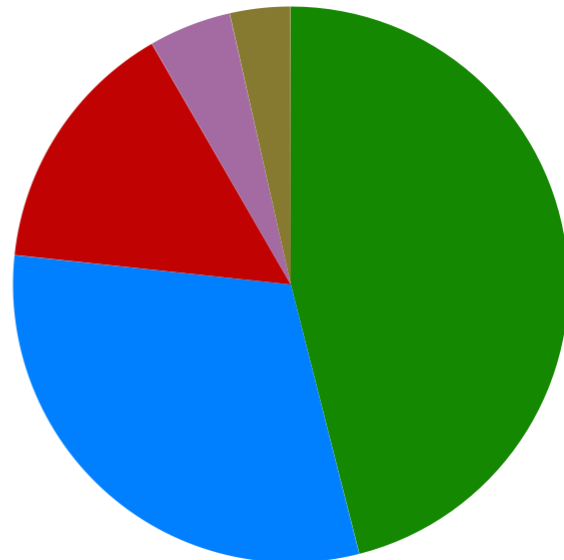


Health

Sheffield English has 34 (4.8%) residents that report being in **bad health** and 25 (3.5%) residents that report being in **very bad health**.

Residents by level of health (count)

Very good health	326
Good health	217
Fair health	106
Bad health	34
Very bad health	25



Powered by esd

Community plans

Sherfield English has a **Village Design Statement** which was adopted by Test Valley Borough Council in April 2000 as Supplementary Planning Guidance. The design statement provides a description of the natural and man-made features of the village of Sherfield English that are regarded by the members of the community as particularly distinctive. The document provides a guide to ensure that future development and change is managed to respect and preserve the character and distinctiveness of the village. It should thus contribute positively to protecting and enhancing the special nature and qualities of the community that is Sherfield English today. This document is available on the Council's website at the following page:

<http://bit.ly/2eqgj7m>

Sherfield English has a **Parish Plan**, which is a document that sets out what is important to the local community. It was published in 2008, and covers a wide range of issues including social, economic and environmental issues, and can be found online:

<http://bit.ly/2en8oJ4>

Details of any community planning exercises your parish is undertaking can be added here. Please get in touch with the Policy Team at the email address below and we will be more than happy to add information at your request.

Local facilities

Food stores	Yes
Other shops	Post Office, farm shop
Primary schools	None
Secondary schools	None
Health facilities	None
Leisure facilities	Sports field
Public houses	The Hatchet Inn
Community facilities	Sherfield English Village Hall
Churches	St Leonard's Church
Local recycling centres	Hill Farm Caravan Site

Public and community transport

Bluestar service X7

This bus service runs between Salisbury and Southampton via several villages, including Sherfield English.

More information about the route and the timetable can be found online at:

<http://bit.ly/2dUJ21D>

Further community transport information for Test Valley can be found on Hampshire County Council's website:

<http://bit.ly/2ecJuLK>



Legend

- Parish Boundaries
- SPA - Special Production Area
- SSSI - Sites of Special Scientific Interest
- SINC - Sites of Importance for Nature Conservation
- Conservation Areas
- VBC Borough Boundary

Scale: NTS@A3L
 Date: 16th March 2016
 Drawn: Ian Moodie
 Dept: GIS
 Doc:

Map Showing Designated Sites Within Sherfield English Parish

THIS PLAN IS REPRODUCED FROM ORDNANCE SURVEY MATERIAL WITH THE PERMISSION OF ORDNANCE SURVEY AND THE NATIONAL ARCHIVE. THE CROWN COPYRIGHT AND OTHER RIGHTS IN THIS MAP ARE RESERVED BY HER MAJESTY'S STATIONERY OFFICE. © CROWN COPYRIGHT. UNAUTHORISED REPRODUCTION INFRINGES CROWN COPYRIGHT AND MAY LEAD TO PROSECUTION OR CIVIL ACTION. TEST VALLEY BOROUGH COUNCIL LICENCE NO. 100024595.2014

Additional information

The information in this profile has been prepared by Test Valley Borough Council's Policy Team in partnership with the Local Government Association. If you would like further information, please contact the Policy Team on 01264 368000 or policyteam@testvalley.gov.uk, and we will be happy to work with you to provide a more detailed profile.

This profile contains key information for you to use to contribute to the development of a Neighbourhood Plan or other community project. If you know of any additional information about the parish that may be of use (for example, information on local facilities) please get in touch and we will endeavor to work with you to add to or change the profile.

Please note that most of the data featured in this profile is taken from the 2011 Census, whilst the population data is taken from Hampshire County Council's 2016 Small Area Population Forecast. Therefore, there is some discrepancy in population figures.