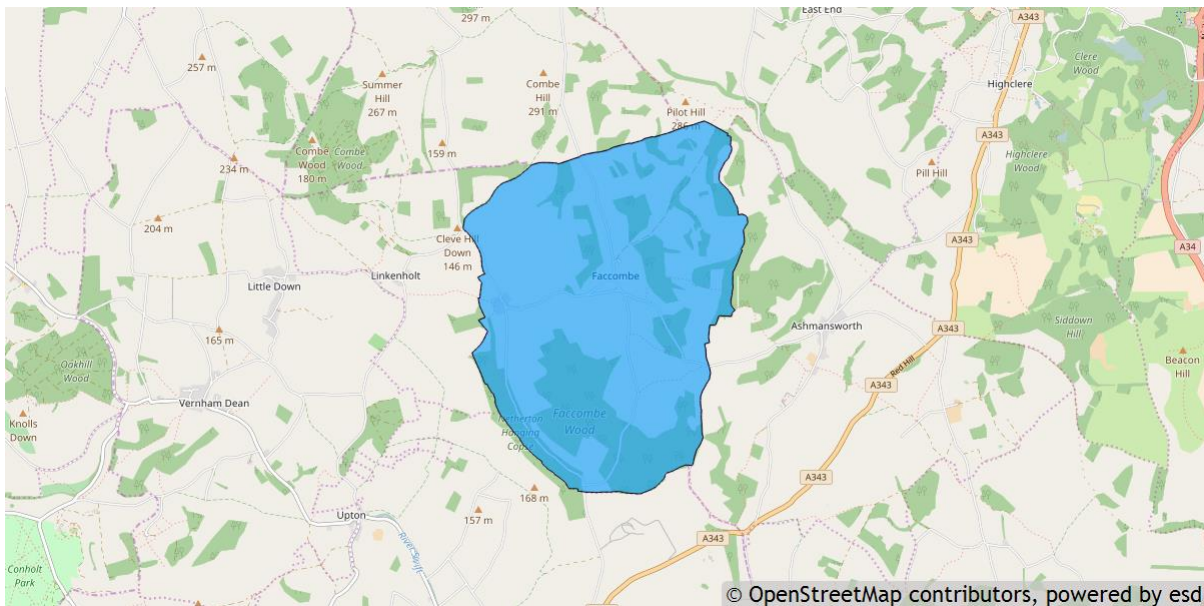


Facombe parish profile

This profile provides a summary of the latest available information on the demographic make-up of the Facombe parish within Test Valley. It looks at information on topics such as the population structure, economic, housing, health and educational information for the parish.

Facombe is one of the 59 parishes in Test Valley. It has an area of 1,514 hectares which represents 2.4% of the total area of Test Valley.



Elected representatives

<p>Hampshire County Councillor</p> <p>Cllr Timothy Rolt Home: 01264 358365 Mobile: 07795 204233 Email: timothy.rolt@hants.gov.uk</p>	<p>Test Valley Borough Councillor</p> <p>Cllr Peter Giddings Home: 01794 737647 Mobile: 07721 051832 Email: cllrpgiddings@testvalley.gov.uk</p>
<p>Facombe Parish Meeting Chairman</p> <p>Cllr Richard Hadland Daytime: 01264 737247 Email: al@faccombe.co.uk</p>	<p>Facombe Parish Meeting Clerk</p> <p>Ms Caroline Stevens Daytime: 01264 737247 Email: caroline@faccombe.co.uk</p>

Residents

The estimated 2016 population of Faccombe parish is 93. This is expected to increase to 101 by 2021 (an increase of 8.6%).

Faccombe's resident population is 52.7% female and 46.3% male.

Young people (0-19) currently make up 20.4% of Faccombe's population; this is expected to rise to 21.8% by 2021.

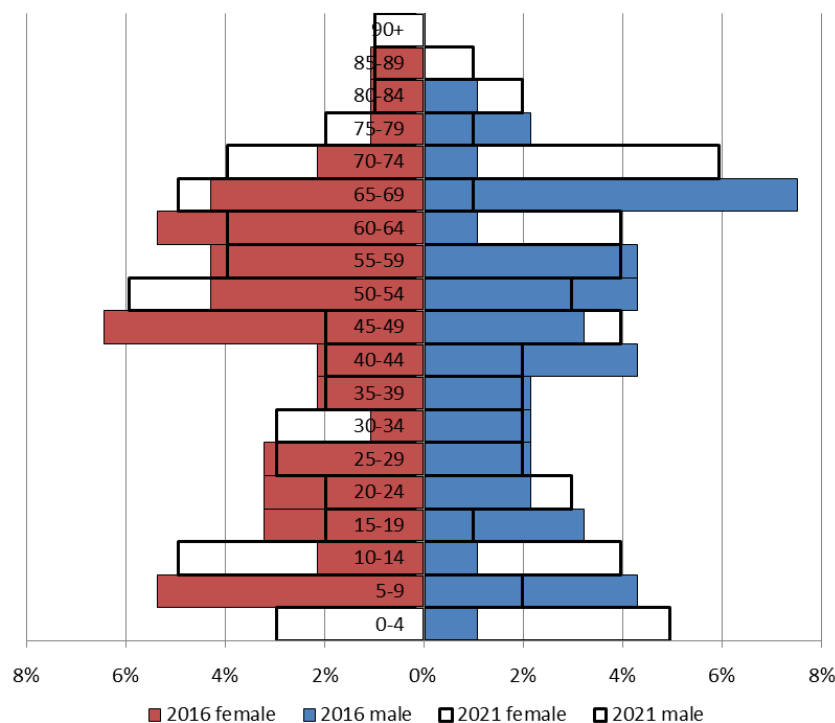
Young adults (20-39) currently make up 18.3% of the parish's population; this is expected to rise slightly to 18.8% by 2021.

Middle aged residents (40-64) currently account for 39.8% of Faccombe's population; this is expected to fall to 34.7% by 2021.

Those **aged 65 and over** make up 21.5% of the parish's population; this is expected to rise to 24.8% by 2021.

Those **aged 85 and over** currently represent 1.1% of the population; this is expected to rise to 3.0% by 2021.

Age of parish population

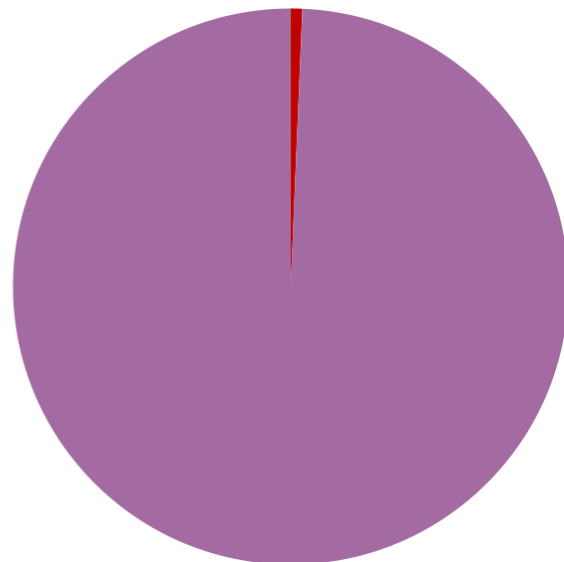


Ethnicity

The largest ethnic group in Facombe is “White” at 99.3% of the parish's population. That compares with a figure of 95.9% for Test Valley as a whole and 95.0% for Hampshire.

Residents by ethnicity (count)

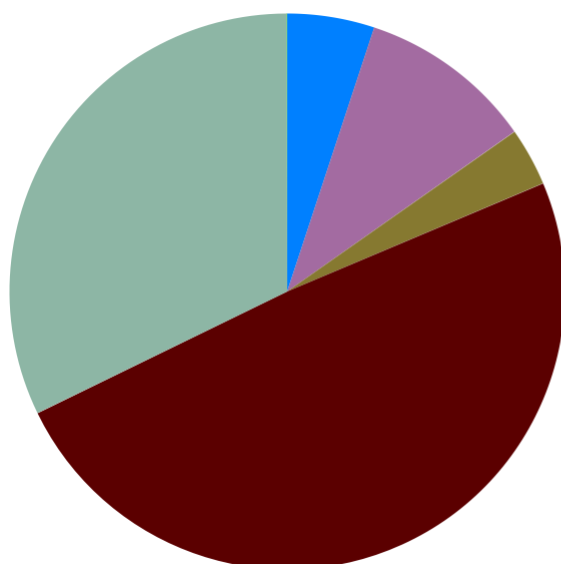
Residents who are Asian/Asian British	0
Residents who are Black/African/Caribbean/Black British	0
Residents who are Mixed/multiple ethnic groups	1
Residents who are White	145
Residents who are Other ethnic group	0



Powered by esd

Households

Facombe parish has **59 households**, which represent 0.1% of Test Valley's 47,626 households. The household split by tenure is shown below (tenure refers to the financial arrangements under which a home is occupied).



Households by tenure (count)

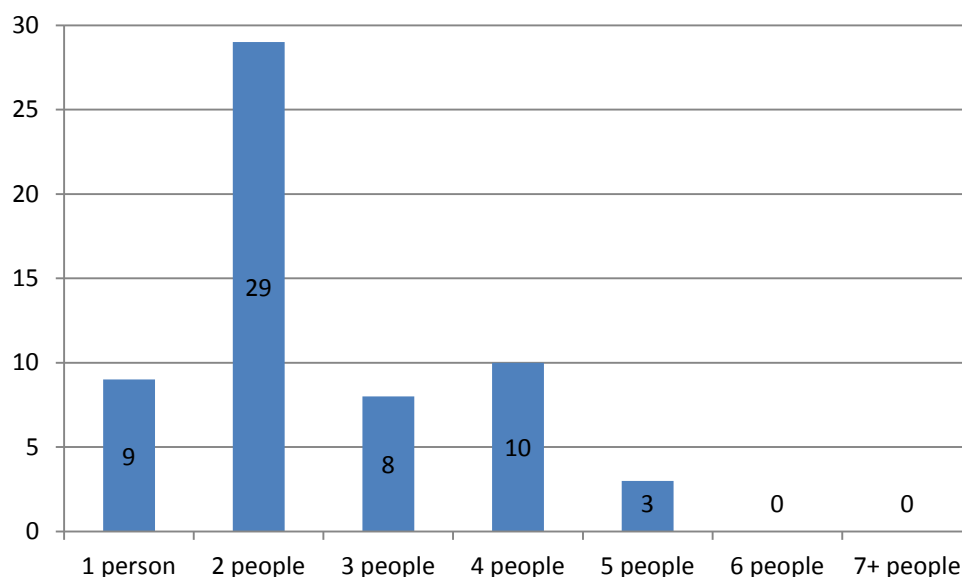
Households rented from council or equivalent	0
Households rented from other private owners	3
Households rented from other social landlords	0
Households owned outright	6
Households owned with a mortgage or loan	2
Households rented from private landlord or letting agency	29
Households where occupiers living rent free	19
Households in shared ownership	0

Powered by esd

The majority of properties (54.2%) are **rented from private owners**. This is higher than the Test Valley average of 12.9%. None of Facombe's households are **socially rented**, compared to 14.4% across Test Valley.

The majority of Test Valley households (70.4%) are **owned by those who live in them**, compared to 13.6% of Facombe households.

Households by number of residents



49.2% of Facombe's households are occupied by two people, and 15.3% by one person. 35.6% of the parish's households are occupied by more than two people.

Facombe has 4 households with **dependent children aged 0 to 4**. That represents 6.8% of the parish's households.

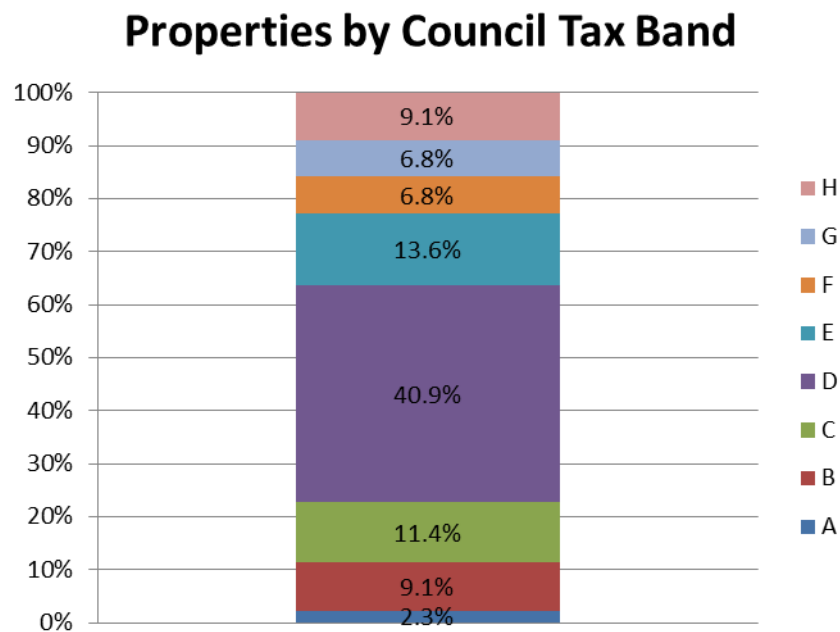
17 households in the parish have **dependent children of all ages**. That represents 28.8% of the parish's households.

House prices

According to Zoopla, the average house price in Facombe (as of November 2016) is **£895,043**. This has increased by 30.0% in the last five years.

It is estimated that **38.2% of households in north rural Test Valley cannot afford to buy a private property**. The north rural area includes the wards of Bourne Valley, Anna, Ampport, Bourne Valley, Harewood, Over Wallop, and Penton Bellinger.

Council Tax Bands



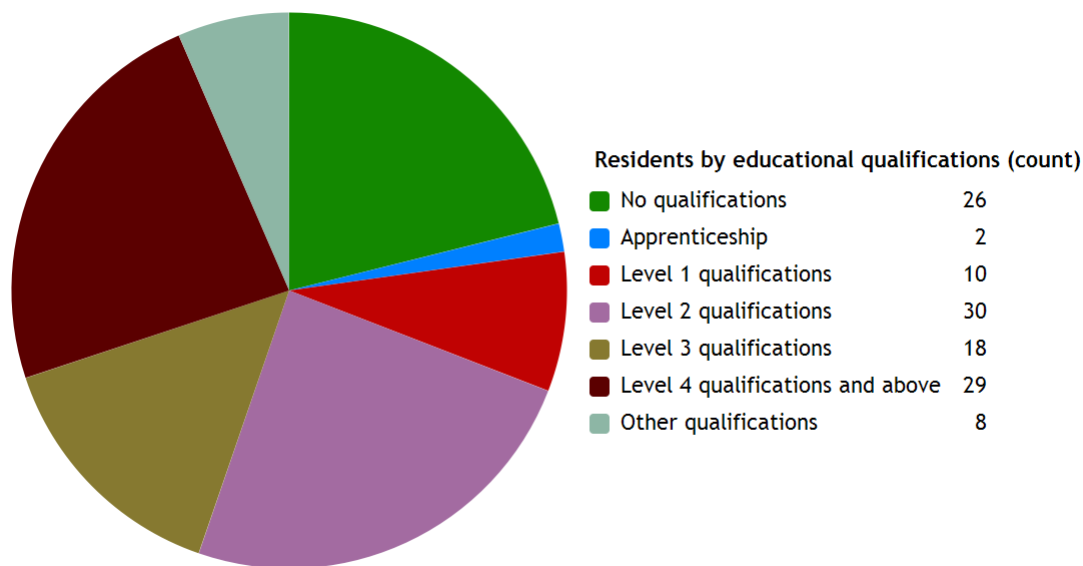
11.4% of Faccombe properties are at the **lower** end of the property market (Bands A and B). This compares to 22.2% for Test Valley as a whole.

65.9% of the parish's properties are in the **middle** range of the property market (Bands C to E). This compares to 60.8% across the whole borough.

22.7% of Faccombe's properties are at the **higher** end of the property market (Bands F to H). This compares to 17.1% of all Test Valley properties.

Education

23.6% of Faccombe's residents have achieved **level 4 qualifications** and above compared to 30.5% in Test Valley as a whole. 21.1% of Faccombe's residents have **no qualifications** compared to 18.4% in Test Valley.



Powered by esd

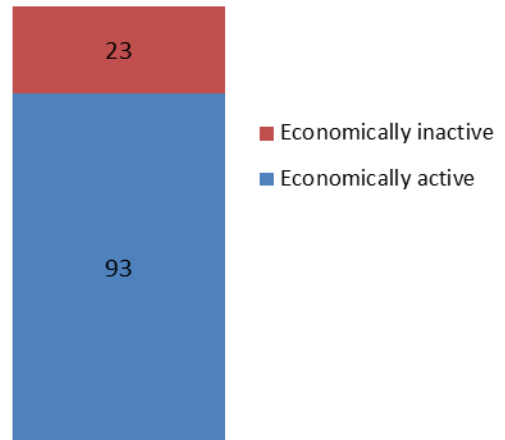
No qualifications	No academic or professional qualifications.
Level 1	1+O level passes, 1+CSE/GCSE any grades, NVQ level 1, Basic/Essential skills, NVQ Level 1.
Level 2	5+O level passes, 5+GCSEs (grades A*-C), 1 A level, 2-3 AS levels, City and Guilds Craft, NVQ level 2.
Level 3	2+A levels, Higher School Certificate, NVQ level 3, City and Guilds Advanced Craft, BTEC National.
Level 4/5	Degree (e.g. BA, BSc) higher degree (e.g. MA, PhD, PGCE), NVQ levels 4 and 5, qualified teacher, nurse or accountant status, BTEC Higher.
Other qualification	Level unknown, vocational/work-related qualifications, foreign qualifications.

Employment

80.2% of Facombe residents aged 16-74 are **economically active**, compared to 73.4% of Test Valley residents. This includes people in full, part and self-employment, those who are actively seeking a job, and full-time students.

The remaining 19.8% of residents aged 16-74 are **economically inactive**, compared to 26.6% of Test Valley residents. This includes people who are retired, long-term sick or disabled, or who look after the home and family.

Economic activity (count)

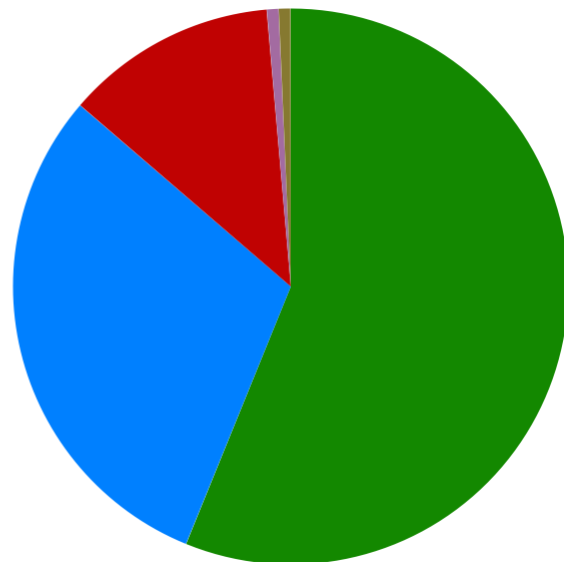


Health

Facombe has 1 (0.7%) residents that report being in **bad health** and 1 (0.7%) residents that report being in **very bad health**.

Residents by level of health (count)

Very good health	82
Good health	44
Fair health	18
Bad health	1
Very bad health	1



Powered by esd

Community plans

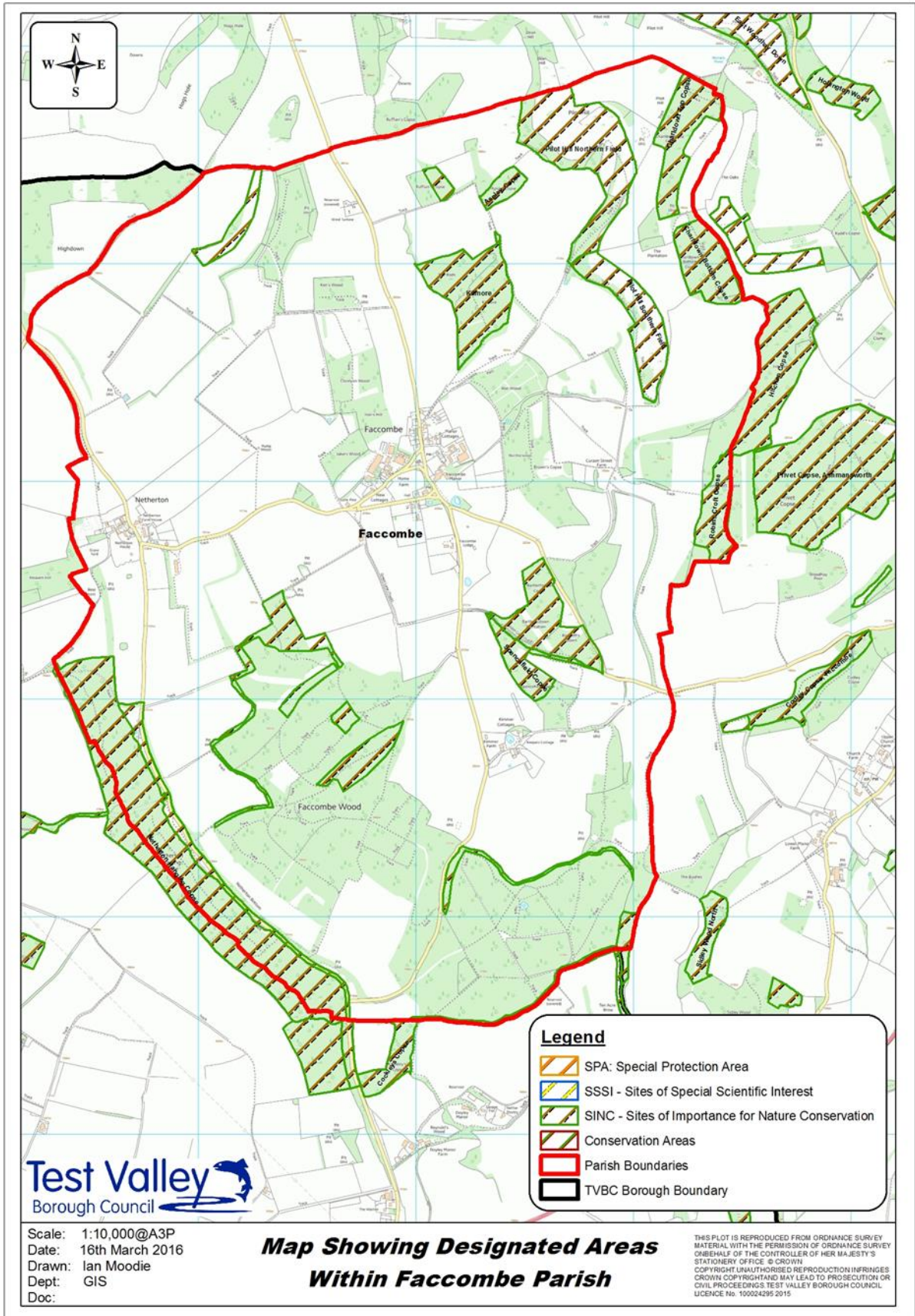
Details of any community planning exercises your parish is undertaking can be added here. Please get in touch with the Policy Team at the email address below and we will be more than happy to add information at your request.

Local facilities

Food stores	None
Other shops	None
Primary schools	None
Secondary schools	None
Health facilities	None
Leisure facilities	None
Public houses	The Jack Russell Inn
Community facilities	Facombe Village Hall
Churches	St Barnabas' Church
Local recycling centres	Facombe Village Hall

Public and community transport

There is currently no public or community transport available for Facombe. Community transport information for Test Valley can be found on Hampshire County Council's website: <http://bit.ly/2ecJuLK>



Additional information

The information in this profile has been prepared by Test Valley Borough Council's Policy Team in partnership with the Local Government Association. If you would like further information, please contact the Policy Team on 01264 368000 or policyteam@testvalley.gov.uk, and we will be happy to work with you to provide a more detailed profile.

This profile contains key information for you to use to contribute to the development of a Neighbourhood Plan or other community project. If you know of any additional information about the parish that may be of use (for example, information on local facilities) please get in touch and we will endeavor to work with you to add to or change the profile.

Please note that most of the data featured in this profile is taken from the 2011 Census, whilst the population data is taken from Hampshire County Council's 2016 Small Area Population Forecast. Therefore, there is some discrepancy in population figures.