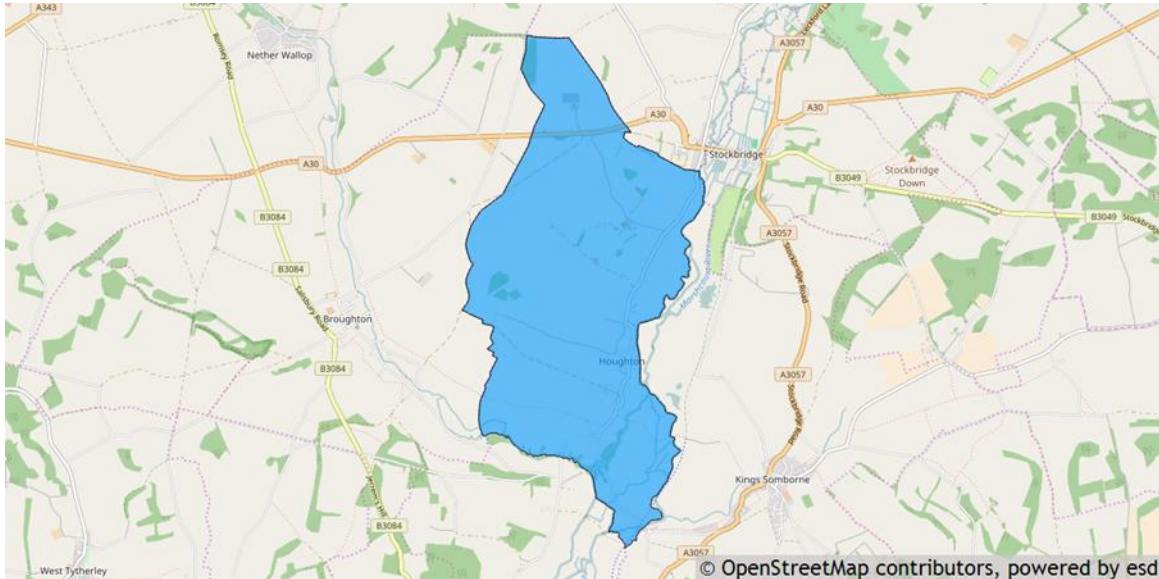


Houghton parish profile

This profile provides a summary of the latest available information on the demographic make-up of the Houghton parish within Test Valley. It looks at information on topics such as the population structure, economic, housing, health and educational information for the parish.

Houghton is one of the 59 parishes in Test Valley. It has an area of 1,688 hectares which represents 2.7% of the total area of Test Valley.



Elected representatives

<p>Hampshire County Councillor</p> <p>Cllr Andrew Gibson Home: 01264 861138 Office: 01264 861087 Mobile: 07802 878248 Email: andrew.gibson@hants.gov.uk</p>	<p>Test Valley Borough Councillors</p> <p>Cllr Peter Boulton Home: 01794 301212 Mobile: 07527 075219 Email: cllrboulton@testvalley.gov.uk</p> <p>Cllr Daniel Busk Home: 01794 388389 Mobile: 07752 070225 Email: cllrdbusk@testvalley.gov.uk</p>
<p>Houghton Parish Council Chairman</p> <p>Cllr Philip Page Home: 01794 388512 Email: Philip.page@cwsurveyors.co.uk</p>	<p>Houghton Parish Council Clerk</p> <p>Ingrid Burt Home: 01794 388070 cllr.ingridburt@gmail.com</p>

Residents

The estimated 2016 population of Houghton parish is 435. This is expected to fall by to 430 by 2021 (a fall of 1.2%).

Houghton 's resident population is 49.9% female and 50.1% male.

Young people (0-19) currently make up 22.3% of Houghton's population; this is expected to fall to 20.7% by 2021.

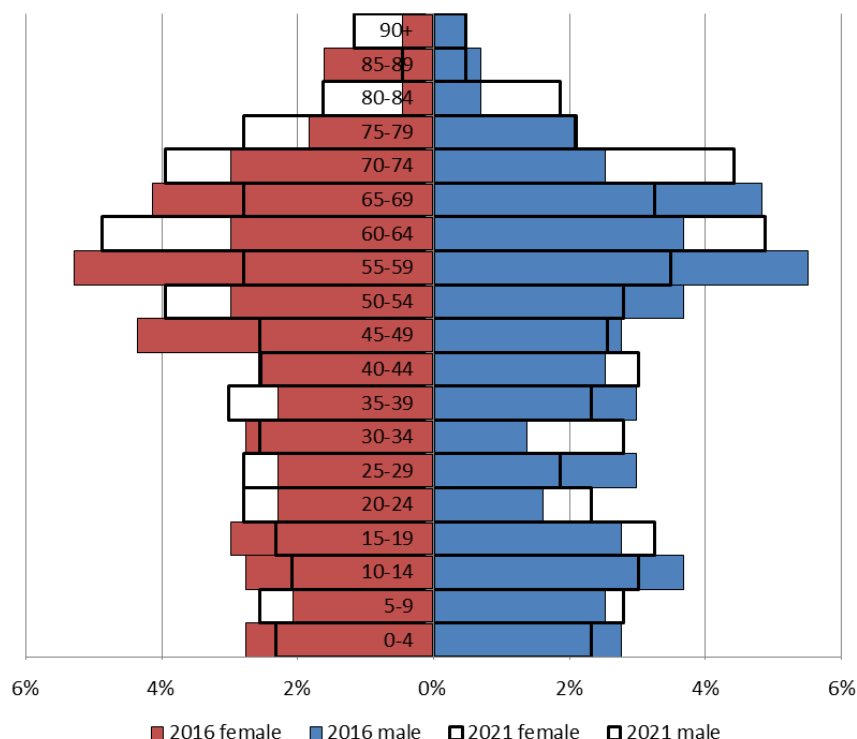
Young adults (20-39) currently make up 18.6% of the parish's population; this is expected to increase to 20.5% by 2021.

Middle aged residents (40-64) currently account for 36.3% of Houghton's population; this is expected to fall to 33.5% by 2021.

Those **aged 65 and over** make up 22.8% of the parish's population; this is expected to rise to 25.3% by 2021.

Those **aged 85 and over** currently represent 3.2% of the population; this is expected to decrease slightly to 2.6% by 2021.

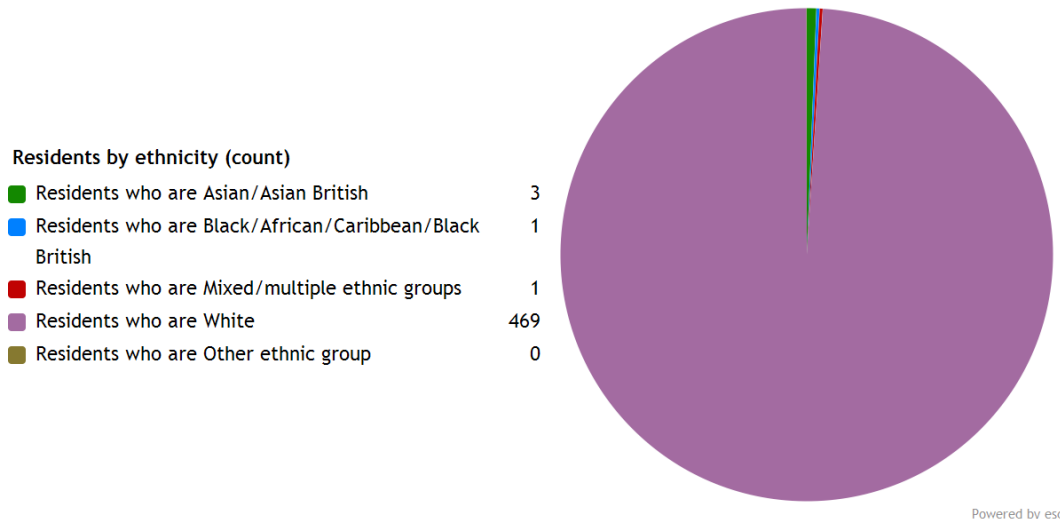
Age of parish population



Ethnicity

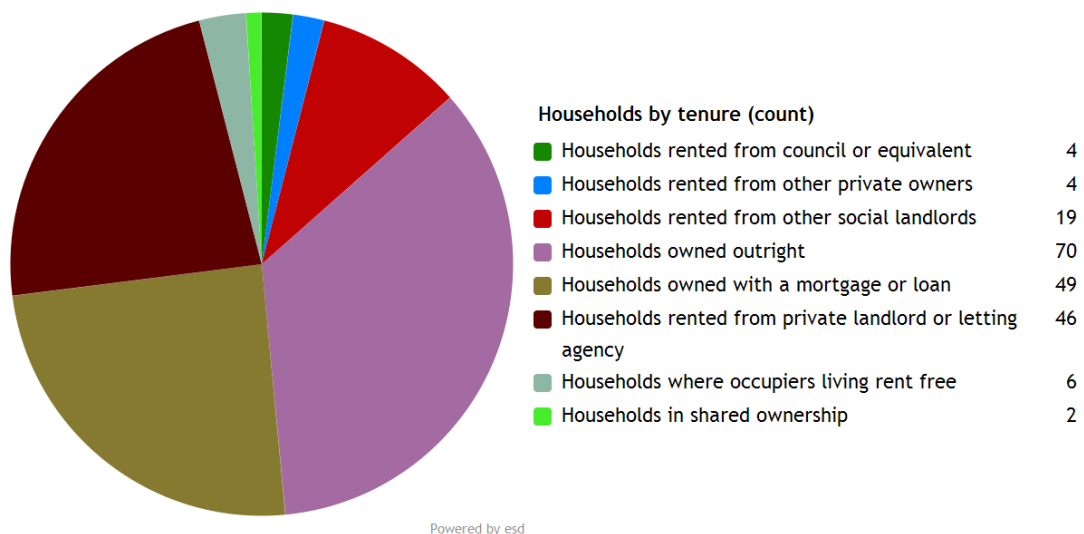
The largest ethnic group in Houghton is “White” at 98.9% of the parish's population. That compares with a figure of 95.9% for Test Valley as a whole and 95.0% for Hampshire.

The second largest ethnic group (0.6%) is “Asian/Asian British”. That compares with 2.0% for Test Valley as a whole and 2.7% for Hampshire.



Households

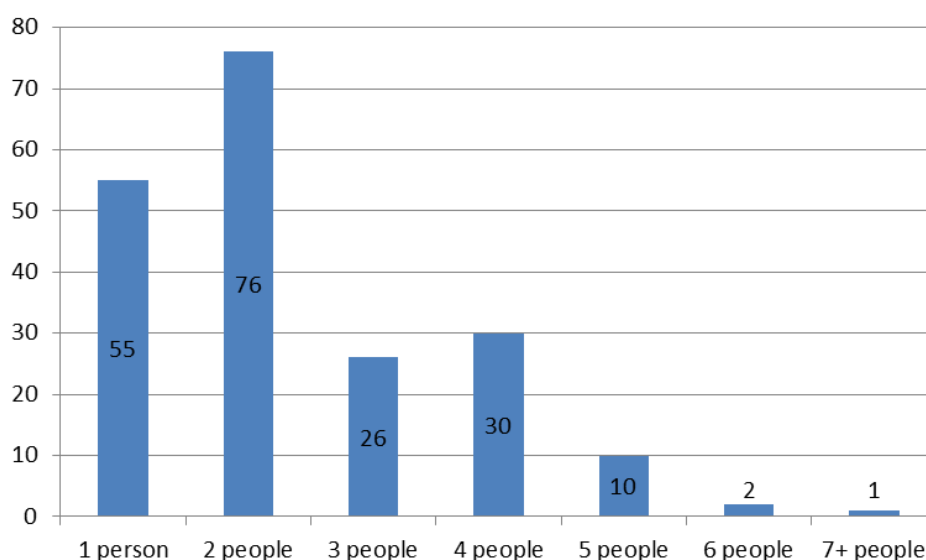
Houghton parish has **200 households**, which represent 0.4% of Test Valley's 47,626 households. The household split by tenure is shown below (tenure refers to the financial arrangements under which a home is occupied).



The majority of properties (59.5%) are **owned by those who live in them**. This is lower than the Test Valley average of 70.4%.

25.0% of Houghton households are **privately rented**, and 11.5% are **socially rented**. This compares to 12.9% and 14.4% respectively across Test Valley.

Households by number of residents



38.0% of Houghton's households are occupied by two people, and 27.5% by one person. 34.5% of the parish's households are occupied by more than two people.

Houghton has 16 households with **dependent children aged 0 to 4**. That represents 8.0% of the parish's households.

55 households in the parish have **dependent children of all ages**. That represents 27.5% of the parish's households.

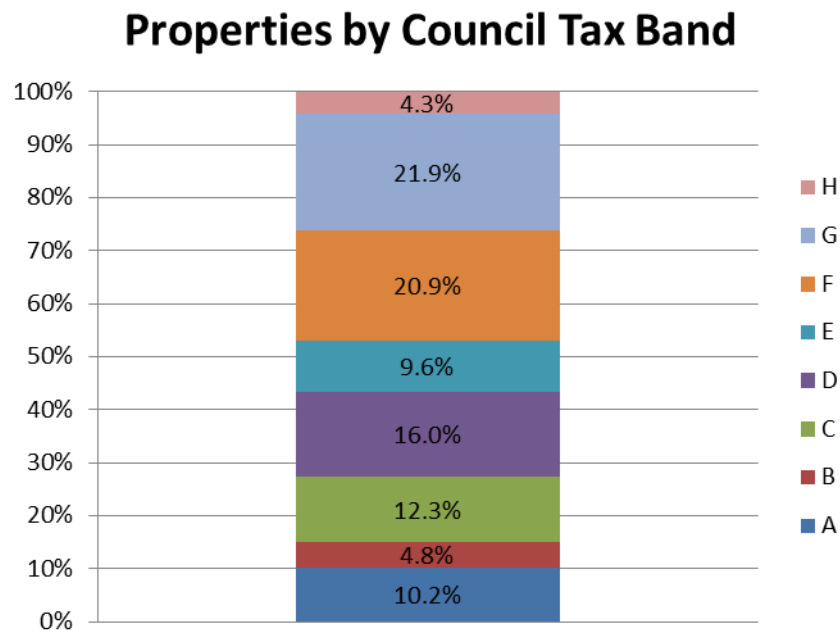
House prices

According to Zoopla, the average house price in Houghton (as of September 2016) is **£788,594**. This has increased by 17.9% in the last five years.

According to Zoopla, the average house price in North Houghton (as of September 2016) is **£1,000,270**. This has increased by 16.4% in the last five years.

It is estimated that **39.4% of households in central rural Test Valley cannot afford to buy a private property**. The central rural area includes the wards of Broughton and Stockbridge, Blackwater, Broughton and Stockbridge, Dun Valley, and Kings Somborne and Michelmersh.

Council Tax Bands



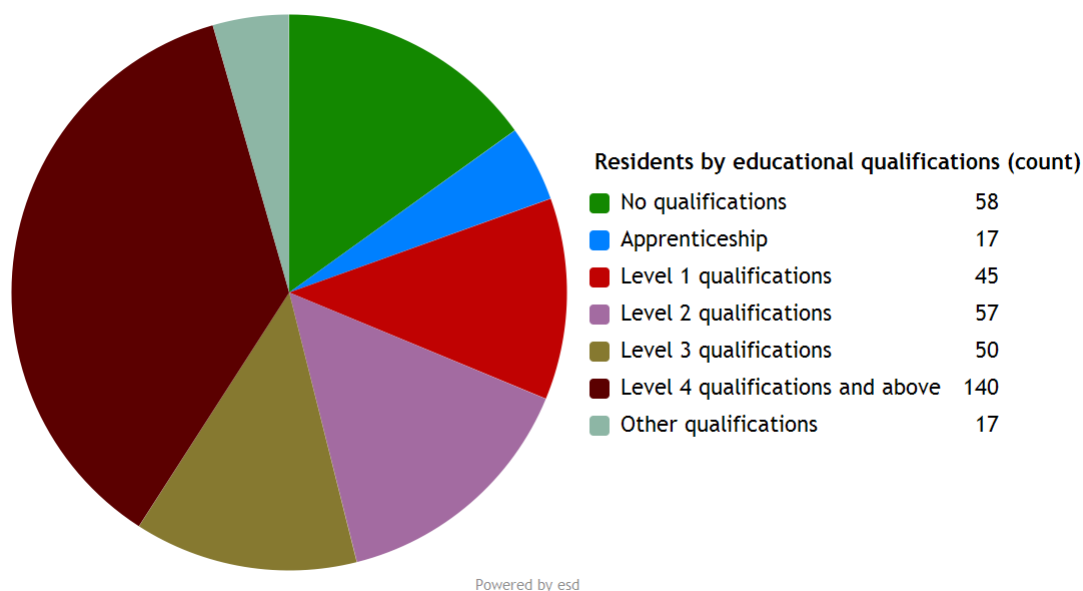
15.0% of Houghton properties are at the **lower** end of the property market (Bands A and B). This compares to 22.2% for Test Valley as a whole.

37.9% of the parish's properties are in the **middle** range of the property market (Bands C to E). This compares to 60.8% across the whole borough.

47.1% of Houghton's properties are at the **higher** end of the property market (Bands F to H). This compares to 17.1% of all Test Valley properties.

Education

36.5% of Houghton's residents have achieved **level 4 qualifications** and above compared to 30.5% in Test Valley as a whole. 15.1% of Houghton's residents have **no qualifications** compared to 18.4% in Test Valley.



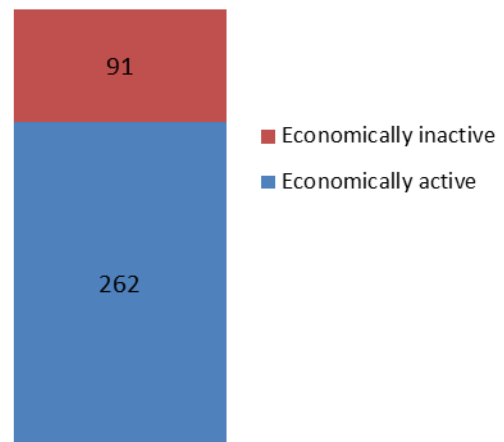
No qualifications	No academic or professional qualifications.
Level 1	1+O level passes, 1+CSE/GCSE any grades, NVQ level 1, Basic/Essential skills, NVQ Level 1.
Level 2	5+O level passes, 5+GCSEs (grades A*-C), 1 A level, 2-3 AS levels, City and Guilds Craft, NVQ level 2.
Level 3	2+A levels, Higher School certificate, NVQ level 3, City and Guilds Advanced Craft, BTEC National.
Level 4/5	Degree (e.g. BA, BSc) higher degree (e.g. MA, PhD, PGCE), NVQ levels 4 and 5, qualified teacher, nurse or accountant status, BTEC Higher.
Other qualification	Level unknown, vocational/work-related qualifications, foreign qualifications.

Employment

74.2% of Houghton residents aged 16-74 are **economically active**, compared to 73.4% of Test Valley residents. This includes people in full-, part- and self-employment, those who are actively seeking a job, and full-time students.

The remaining 25.8% of residents aged 16-74 are **economically inactive**, compared to 26.6% of Test Valley residents. This includes people who are retired, long-term sick or disabled, or who look after the home and family.

Economic activity (count)

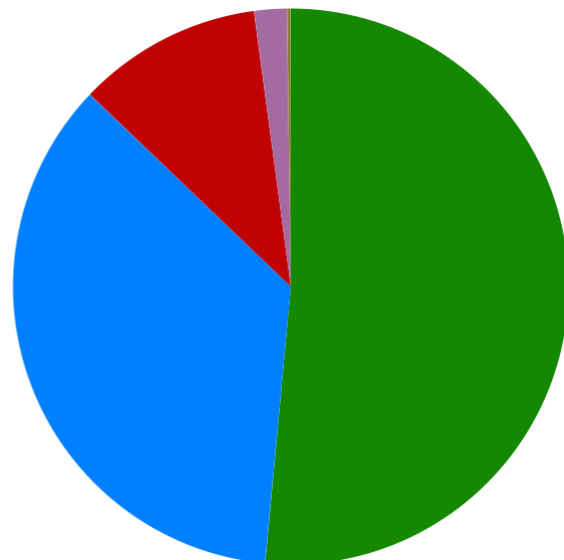


Health

Houghton has 9 (1.9%) residents that report being in **bad health** and 1 (0.2%) resident that report being in **very bad health**.

Residents by level of health (count)

Very good health	244
Good health	169
Fair health	51
Bad health	9
Very bad health	1



Powered by esd

Community plans

Houghton has a **Parish Plan**, which is a document that sets out what is important to the local community. It was published in 2008, and covers a wide range of issues including social, economic and environmental issues, and can be found online:

<https://www.testvalley.gov.uk/resident/communityandleisure/workingwithcommunities/mylocalarea/kings-somborne-michelmersh/parish-plans/>

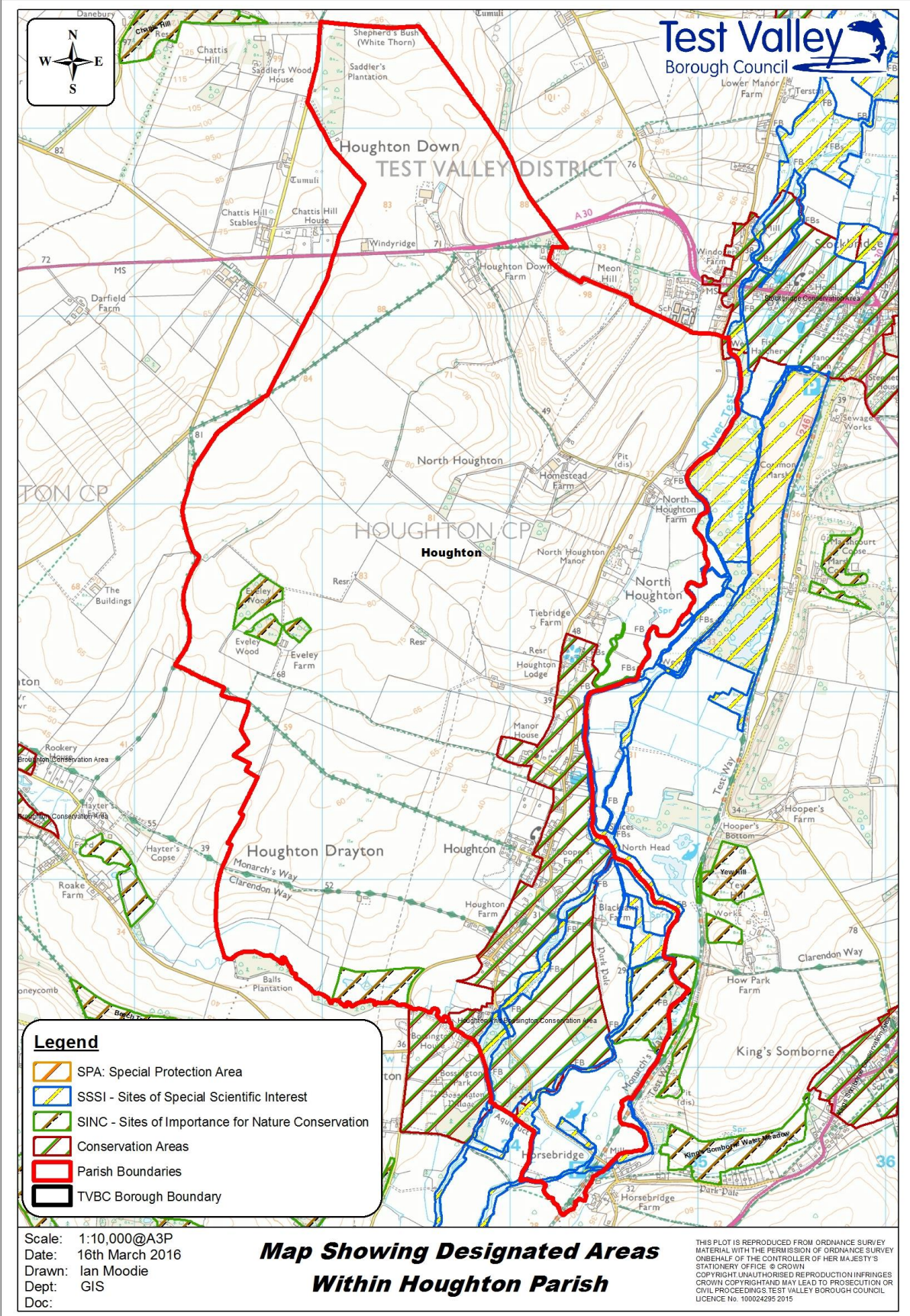
Details of any community planning exercises your parish is undertaking can be added here. Please get in touch with the Policy Team at the email address below and we will be more than happy to add information at your request.

Local facilities

Food stores	None
Other shops	None
Primary schools	None
Secondary schools	None
Health facilities	None
Leisure facilities	Houghton Allotments Houghton Lodge
Public houses	The Boot Inn
Community facilities	Houghton Village Hall
Churches	All Saints Church
Local recycling centres	Houghton Village Hall

Public and community transport

<p>Wheelers 15 bus service</p> <p>A bus service between Andover and Stockbridge stopping at various villages in Northern Test Valley.</p> <p>More information can be found here:</p> <p>http://ow.ly/HnRO306pWda</p>	<p>Taxi share service 54</p> <p>Passengers must pre-book and are picked up from their local bus stop.</p> <p>Please phone 01962 846786</p> <p>More information can be found online at:</p> <p>http://ow.ly/xsUI306pWns</p>
<p>Stockbridge Neighbourcare</p> <p>A scheme based upon a volunteer driver who will take residents to GP and hospital appointments, shopping visits.</p> <p>For more information can be here:</p> <p>http://bit.do/cSQBT</p>	<p>Further community transport information for Test Valley can be found on Hampshire County Council's website:</p> <p>http://bit.do/cSQBz</p>



Additional information

The information in this profile has been prepared by Test Valley Borough Council's Policy Team in partnership with the Local Government Association. If you would like further information, please contact the Policy Team on 01264 368000 or policyteam@testvalley.gov.uk, and we will be happy to work with you to provide a more detailed profile.

This profile contains key information for you to use to contribute to the development of a Neighbourhood Plan or other community project. If you know of any additional information about the parish that may be of use (for example, information on local facilities) please get in touch and we will endeavor to work with you to add to or change the profile.

Please note that most of the data featured in this profile is taken from the 2011 Census, whilst the population data is taken from Hampshire County Council's 2016 Small Area Population Forecast. Therefore, there is some discrepancy in population figures.