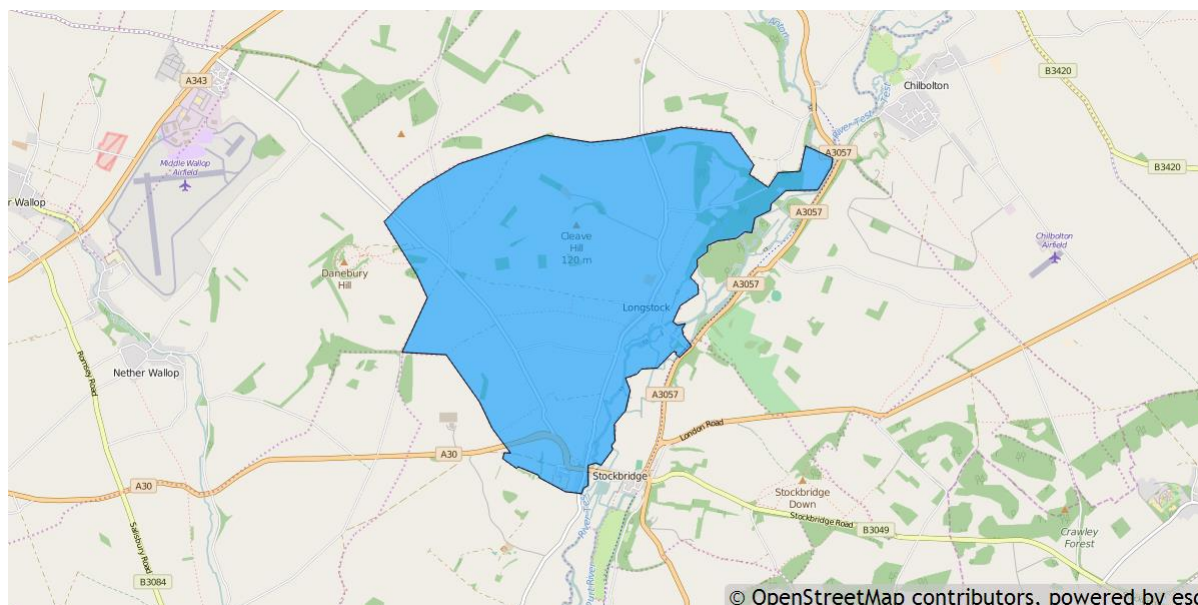


Longstock parish profile

This profile provides a summary of the latest available information on the demographic make-up of the Longstock parish within Test Valley. It looks at information on topics such as the population structure, economic, housing, health and educational information for the parish.

Longstock is one of the 59 parishes in Test Valley. It has an area of 1,207 hectares which represents 1.9% of the total area of Test Valley



Elected representatives

<p>Hampshire County Councillor</p> <p>Cllr Andrew Gibson Home: 01264 861138 Office: 01264 861087 Mobile: 07802 878248 Email: andrew.gibson@hants.gov.uk</p>	<p>Test Valley Borough Councillors</p> <p>Cllr Peter Boulton Home: 01794 301212 Mobile: 07527 075219 Email: cllrboulton@testvalley.gov.uk</p> <p>Cllr Daniel Busk Home: 01794 388389 Mobile: 07752 070225 Email: cllrdbusk@testvalley.gov.uk</p>
<p>Longstock Parish Council Chairman</p> <p>Cllr Sophie Walters Daytime: 01264 810171 Email: sophie.walters@btopenworld.com</p>	<p>Longstock Parish Council Clerk</p> <p>Mr John Musters Daytime: 01264 810459 Email: musters358@btinternet.com</p>

Residents

The estimated 2016 population of Longstock parish is 459. This is expected to rise by 2021 to 478 (an increase of 4.1%).

Longstock's resident population is 50.3% female and 49.7% male.

Young people (0-19) currently make up 18.7% of Longstock's population; this is expected to increase slightly to 19.0% by 2021.

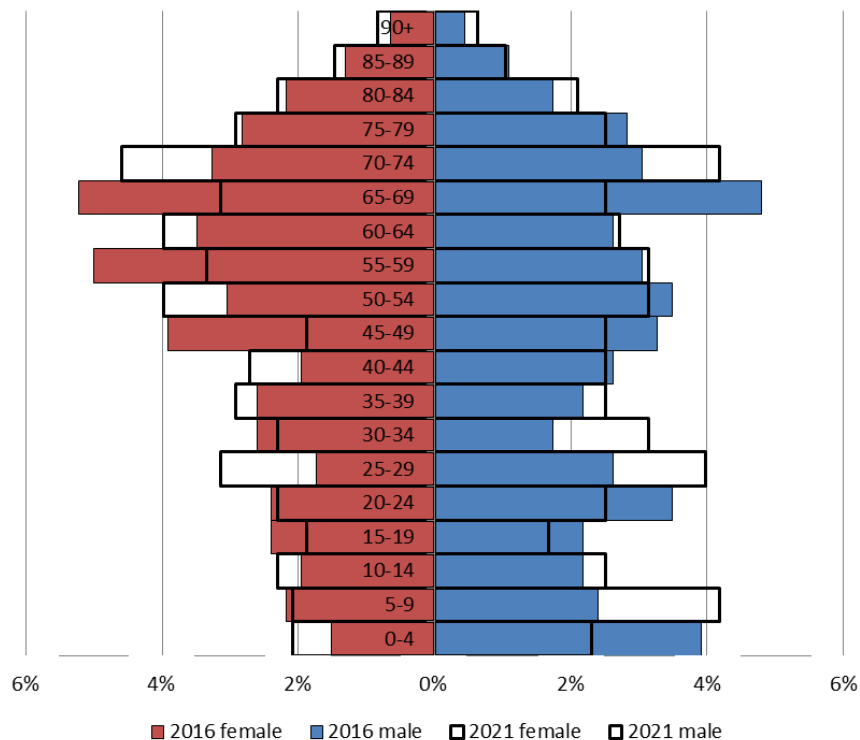
Young adults (20-39) currently make up 19.4% of the parish's population; this is expected to rise to 22.8% by 2021.

Middle aged residents (40-64) currently account for 32.5% of Longstock's population; this is expected to fall to 29.9% by 2021.

Those **aged 65 and over** make up 29.4% of the parish's population; this is expected to fall to 28.2% by 2021.

Those **aged 85 and over** currently represent 3.5% of the population; this is expected to increase slightly to 4.0% by 2021.

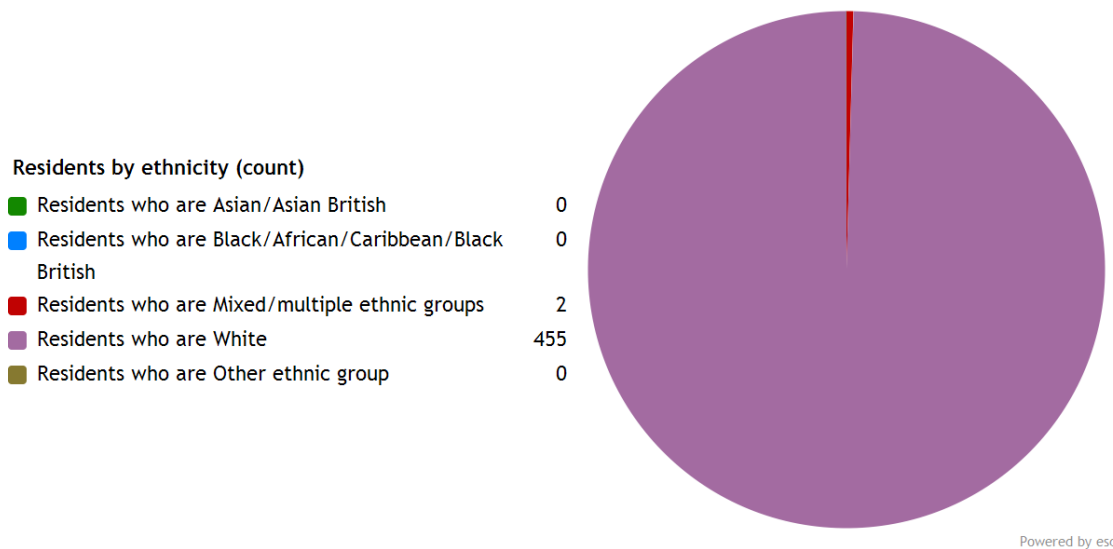
Age of parish population



Ethnicity

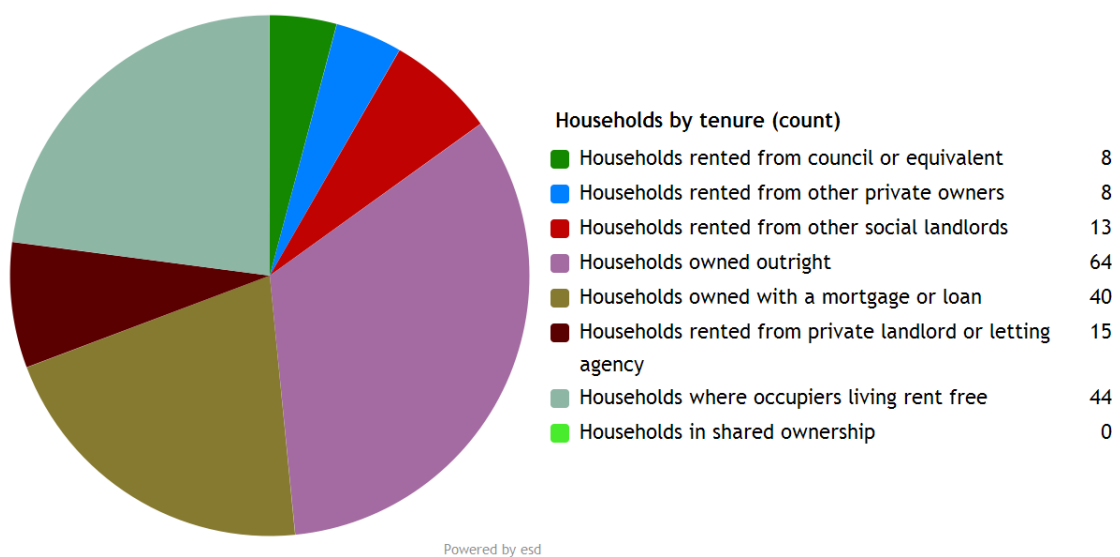
The largest ethnic group in Longstock is “White” at 99.6 % of the parish's population. That compares with a figure of 95.9% for Test Valley as a whole and 95.0% for Hampshire.

The second largest ethnic group (0.9%) is “Mixed/multiple ethnic groups”. That compares with 1.3% for Test Valley as a whole and 1.4% for Hampshire.



Households

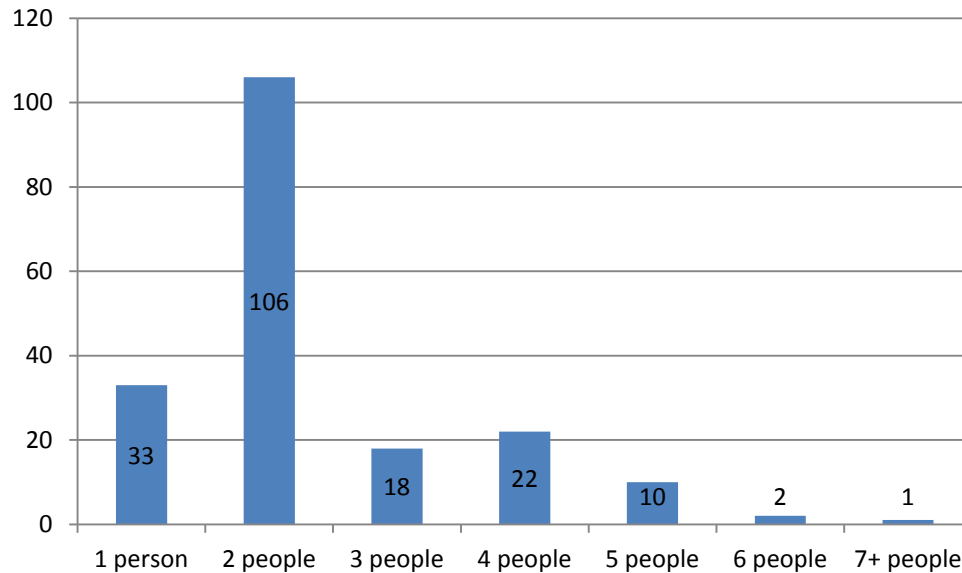
Longstock parish has **192 households**, which represent 0.4% of Test Valley's 47,626 households. The household split by tenure is shown below (tenure refers to the financial arrangements under which a home is occupied).



The majority of properties (54.2%) are **owned by those who live in them**. This is lower than the Test Valley average of 70.4%.

12.0% of Longstock households are **privately rented**, and 10.9% are **socially rented**. This compares to 12.9% and 14.4% respectively across Test Valley.

Households by number of residents



55.2% of Longstock's households are occupied by two people, and 17.2% by one person. 27.6% of the parish's households are occupied by more than two people.

Longstock has 12 households with **dependent children aged 0 to 4**. That represents 6.3% of the parish's households.

44 households in the parish have **dependent children of all ages**. That represents 22.9% of the parish's households.

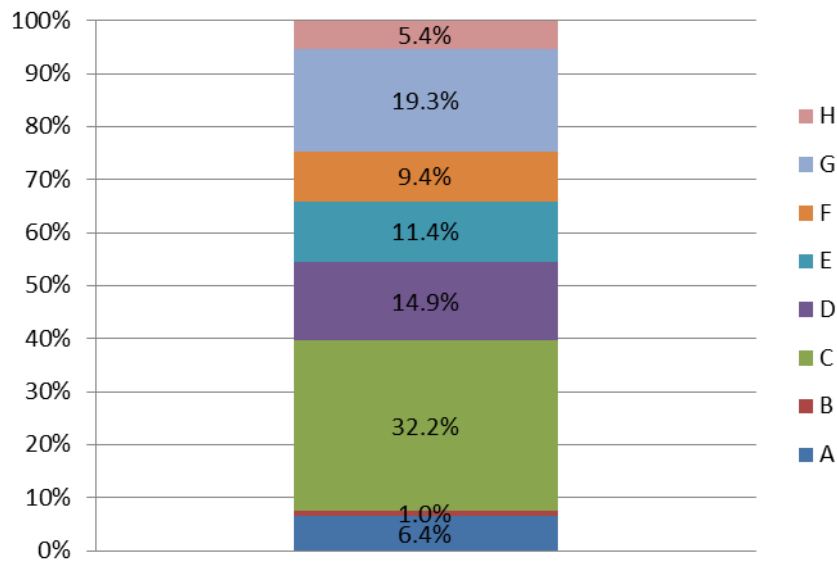
House prices

According to Zoopla, the average house price in Longstock (as of March 2016) is **£1,071,972**. This has increased by 22.8% in the last five years.

It is estimated that **39.4% of households in central rural Test Valley cannot afford to buy a private property**. The central rural area includes the wards of Broughton and Stockbridge, Blackwater, Broughton and Stockbridge, Dun Valley, and Kings Somborne and Michelmersh.

Council Tax Bands

Properties by Council Tax Band



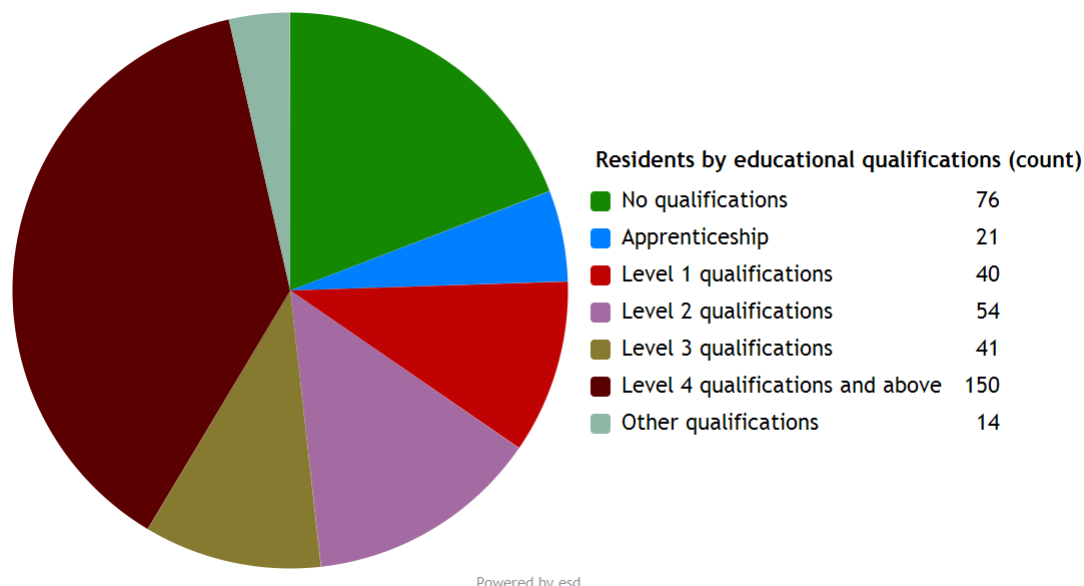
7.4% of Longstock properties are at the **lower** end of the property market (Bands A and B). This compares to 22.2% for Test Valley as a whole.

58.5% of the parish's properties are in the **middle** range of the property market (Bands C to E). This compares to 60.8% across the whole borough.

34.1% of Longstock's properties are at the **higher** end of the property market (Bands F to H). This compares to 17.1% of all Test Valley properties.

Education

32.8% of Longstock's residents have achieved **level 4 qualifications** and above compared to 30.5% in Test Valley as a whole. 16.6% of Longstock's residents have **no qualifications** compared to 18.4% in Test Valley.



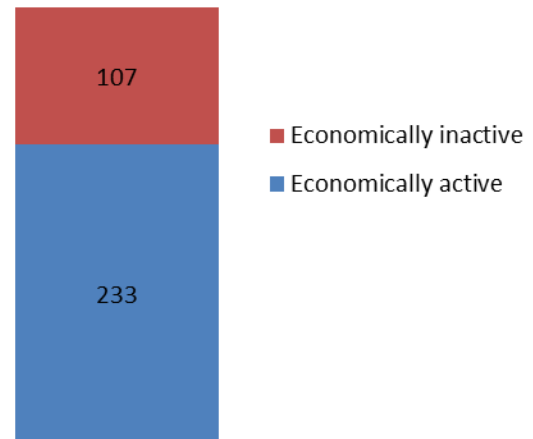
No qualifications	No academic or professional qualifications.
Level 1	1+O level passes, 1+CSE/GCSE any grades, NVQ level 1, Basic/Essential skills, NVQ Level 1.
Level 2	5+O level passes, 5+GCSEs (grades A*-C), 1 A level, 2-3 AS levels, City and Guilds Craft, NVQ level 2.
Level 3	2+A levels, Higher School certificate, NVQ level 3, City and Guilds Advanced Craft, BTEC National.
Level 4/5	Degree (e.g. BA, BSc) higher degree (e.g. MA, PhD, PGCE), NVQ levels 4 and 5, qualified teacher, nurse or accountant status, BTEC Higher.
Other qualification	Level unknown, vocational/work-related qualifications, foreign qualifications.

Employment

68.5% of Longstock residents aged 16-74 are **economically active**, compared to 73.4% of Test Valley residents. This includes people in full-, part- and self-employment, those who are actively seeking a job, and full-time students.

The remaining 31.5% of residents aged 16-74 are **economically inactive**, compared to 26.6% of Test Valley residents. This includes people who are retired, long-term sick or disabled, or who look after the home and family.

Economic activity (count)

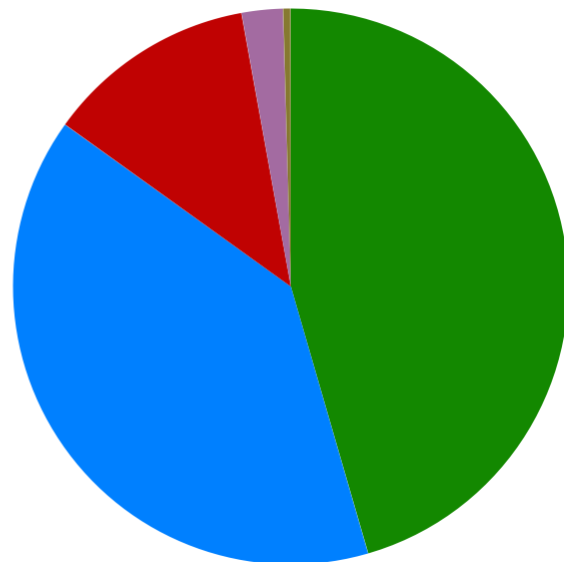


Health

Longstock has 11 (2.4%) residents that report being in bad health and 2 (0.4%) residents that report being in very bad health.

Residents by level of health (count)

Very good health	208
Good health	180
Fair health	56
Bad health	11
Very bad health	2



Powered by esd

Community plans

Longstock has a **Village Design Statement** which was adopted by Test Valley Borough Council in June 2010 as Supplementary Planning Guidance.

The advisory document aims to describe the qualities of the village that the community treasures and sets out how these can be preserved and enhanced. It also identifies the developments that the community would like to see to improve the village and its environment. This document is available on the Council's website at the following page:

<http://www.testvalley.gov.uk/resident/planningandbuildingcontrol/planningpolicy/village-design-statements/longstockvds/>

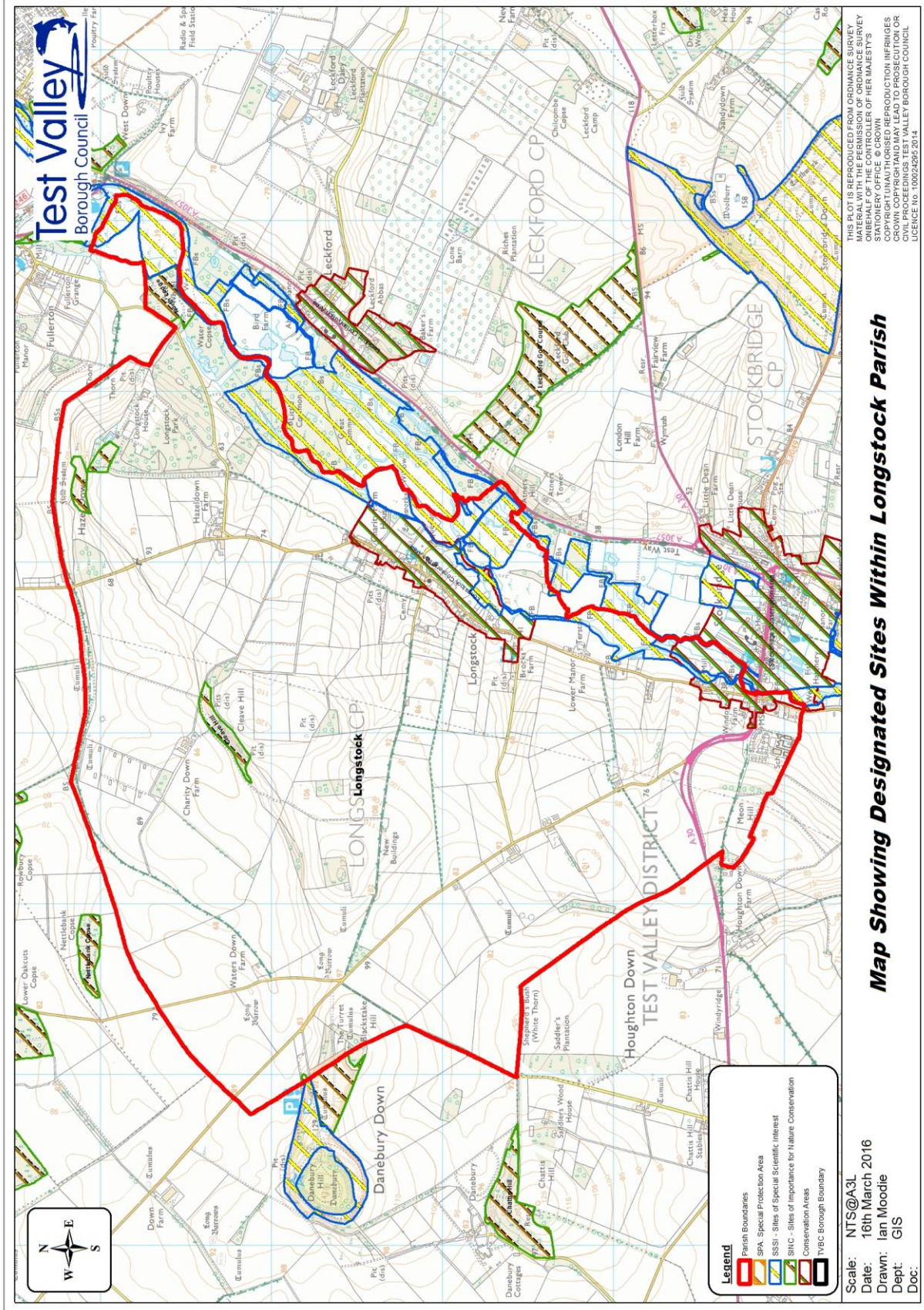
Details of any community planning exercises your parish is undertaking can be added here. Please get in touch with the Policy Team at the email address below and we will be more than happy to add information at your request.

Local facilities

Food stores	None
Other shops	None
Primary schools	None
Secondary schools	Test Valley School
Health facilities	None
Leisure facilities	Playground
Public houses	Peat Spade Inn
Community facilities	Village hall
Churches	St Mary's Church
Local recycling centre	None

Public and community transport

<p>Andover dial-a-ride</p> <p>Offers a weekly shopping trip for anyone who has difficulty using public transport or lives more than 400m from a bus stop.</p> <p>More information can be found online at:</p> <p>http://www.tvcs.org.uk/dial-a-ride/</p>	<p>Taxi share service 54</p> <p>Passengers must pre-book and are picked up from their local bus stop.</p> <p>Please phone 01962 846786</p> <p>More information can be found online at:</p> <p>http://www3.hants.gov.uk/passengertransport/communitytransport/taxishares/testvalleytaxishares/stockbridgetaxishare.htm</p>
<p>Wheels to Work</p> <p>Wheels to Work is a moped loan scheme and is designed for people who do not have access to public or private transport to get them to a job, vocational training or to attend interviews. A moped can be loaned for 3 to 12 months depending on circumstances. The scheme is aimed at people between the ages of 16-25.</p> <p>More information on the scheme can be found at:</p> <p>http://www3.hants.gov.uk/passengertransport/communitytransport/wheels-to-work.htm</p>	<p>Stockbridge Neighbourcare</p> <p>A voluntary car scheme for the purpose of GP, Dental, Optician and Hospital appointments.</p> <p>For more information telephone 01264 810363</p> <p>Further information can be found online at:</p> <p>http://www3.hants.gov.uk/community-transport/community-transport-detail?var_org_code=588&var_typecode=33&var_district=</p>



Additional information

The information in this profile has been prepared by Test Valley Borough Council's Policy Team in partnership with the Local Government Association. If you would like further information, please contact the Policy Team on 01264 368000 or policyteam@testvalley.gov.uk, and we will be happy to work with you to provide a more detailed profile.

This profile contains key information for you to use to contribute to the development of a Neighbourhood Plan or other community project. If you know of any additional information about the parish that may be of use (for example, information on local facilities) please get in touch and we will endeavor to work with you to add to or change the profile.

Please note that most of the data featured in this profile is taken from the 2011 Census, whilst the population data is taken from Hampshire County Council's 2016 Small Area Population Forecast. Therefore, there is some discrepancy in population figures.