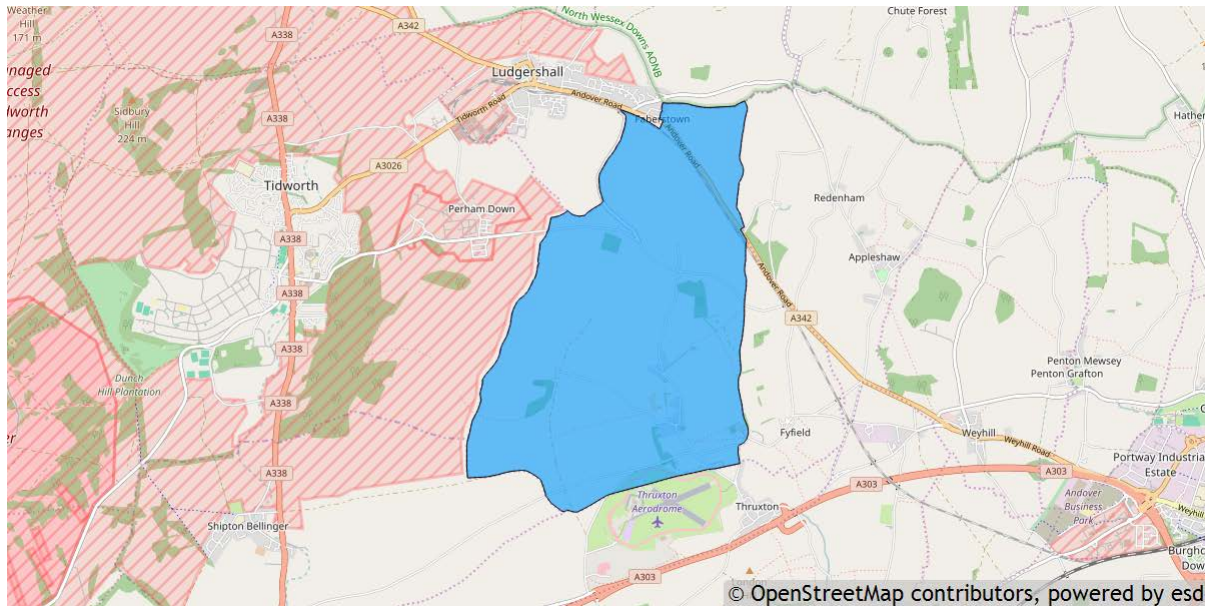


## Kimpton parish profile

This profile provides a summary of the latest available information on the demographic make-up of the Kimpton parish within Test Valley. It looks at information on topics such as the population structure, economic, housing, health and educational information for the parish.

Kimpton is one of the 59 parishes in Test Valley. It has an area of 1,121 hectares which represents 1.8% of the total area of Test Valley.



### Elected representatives

<p><b>Hampshire County Councillor</b></p> <p><b>Cllr Zilliah Brooks</b> Home: 01264 335388 Email: <a href="mailto:zilliah.brooks@hants.gov.uk">zilliah.brooks@hants.gov.uk</a></p>	<p><b>Test Valley Borough Councillors</b></p> <p><b>Cllr Phil Lashbrook</b> Home: 01264 773588 Mobile: 07766 708060 Email: <a href="mailto:cllrplashbrook@testvalley.gov.uk">cllrplashbrook@testvalley.gov.uk</a></p> <p><b>Cllr Pam Mutton</b> Home: 01264 396756 Email: <a href="mailto:cllrpmutton@testvalley.gov.uk">cllrpmutton@testvalley.gov.uk</a></p>
<p><b>Kimpton Parish Council Chairman</b></p> <p><b>Cllr Klaus Tamke</b> Email: <a href="mailto:klaus.tamke@btinternet.com">klaus.tamke@btinternet.com</a></p>	<p><b>Kimpton Parish Council Clerk</b></p> <p><b>Mr Richard Waterman</b> Home: 01264 772460 Mobile: 07777 678485 Email: <a href="mailto:richard.waterman150@btinternet.com">richard.waterman150@btinternet.com</a></p>

## Residents

The estimated 2016 population of Kimpton parish is 344. This is expected to rise to 364 by 2021 (an increase of 5.8%).

Kimpton's resident population is 49.7% female and 50.3% male.

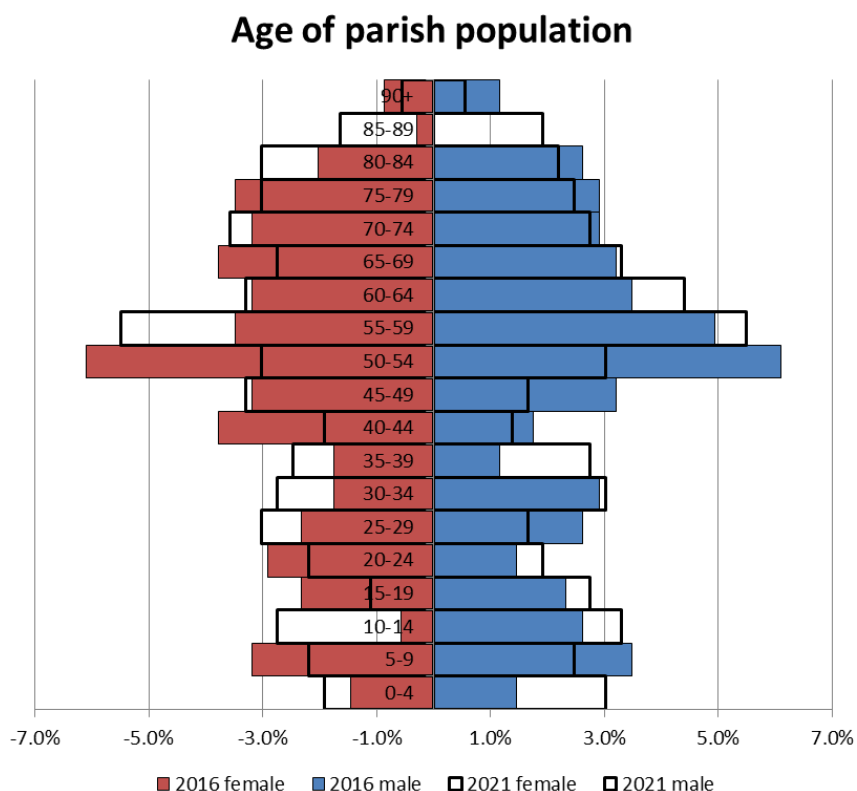
**Young people (0-19)** currently make up 17.4% of Kimpton's population; this is expected to rise to 19.5% by 2021.

**Young adults (20-39)** currently make up 16.9% of the parish's population; this is expected to increase to 19.8% by 2021.

**Middle aged residents (40-64)** currently account for 39.2% of Kimpton's population; this is expected to fall to 33.0% by 2021.

Those **aged 65 and over** make up 26.5% of the parish's population; this is expected to rise to 27.7% by 2021.

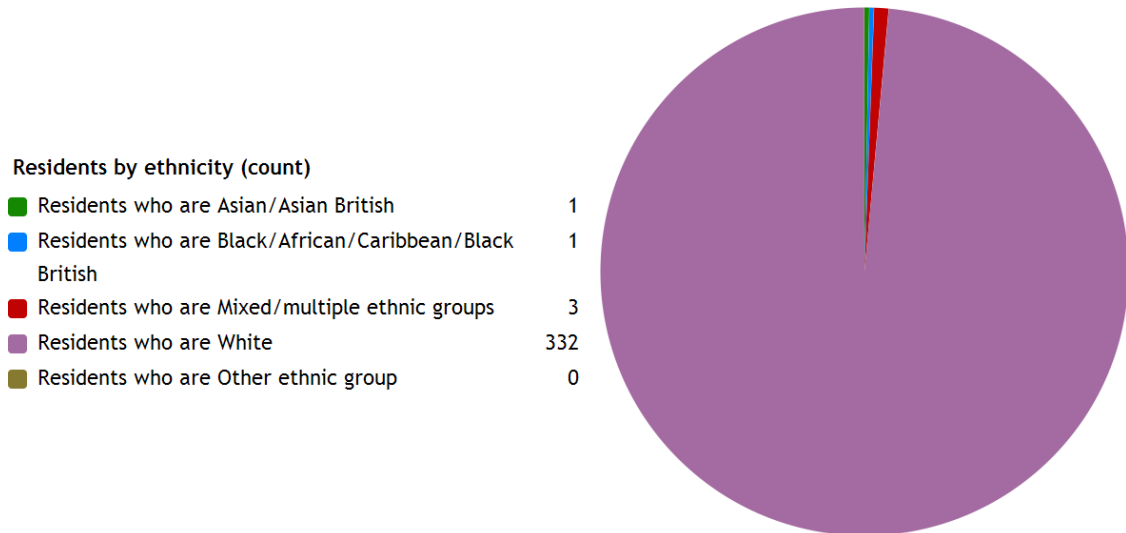
Those **aged 85 and over** currently represent 2.3% of the population; this is expected to rise to 4.7% by 2021.



## Ethnicity

The largest ethnic group in Kimpton is “White” at 98.6% of the parish's population. That compares with a figure of 95.9% for Test Valley as a whole and 95.0% for Hampshire.

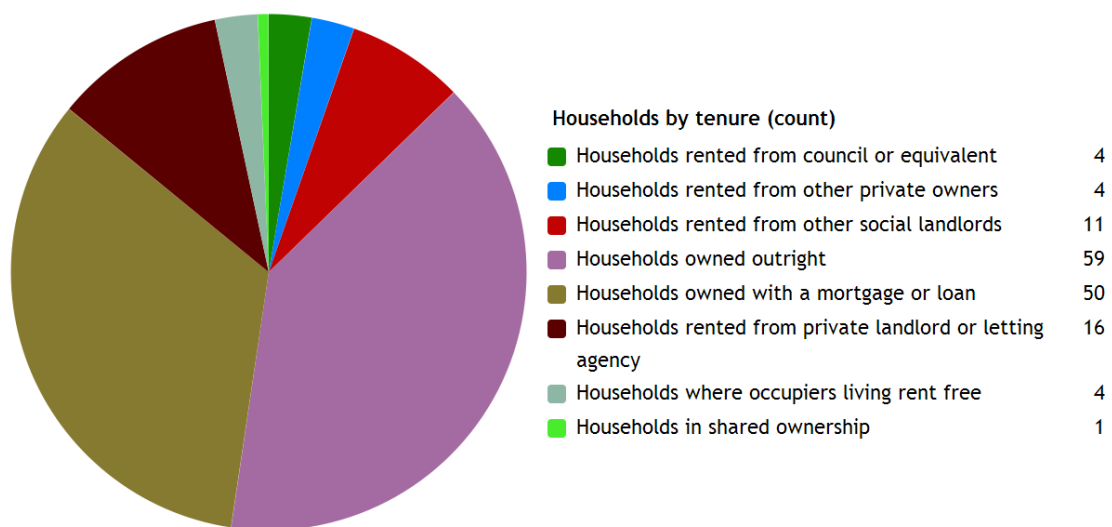
The second largest ethnic group (0.9%) is “Mixed/multiple ethnic groups”. That compares with 1.3% for Test Valley as a whole and 1.4% for Hampshire.



Powered by esd

## Households

Kimpton parish has **149 households**, which represent 0.3% of Test Valley's 47,626 households. The household split by tenure is shown below (tenure refers to the financial arrangements under which a home is occupied).

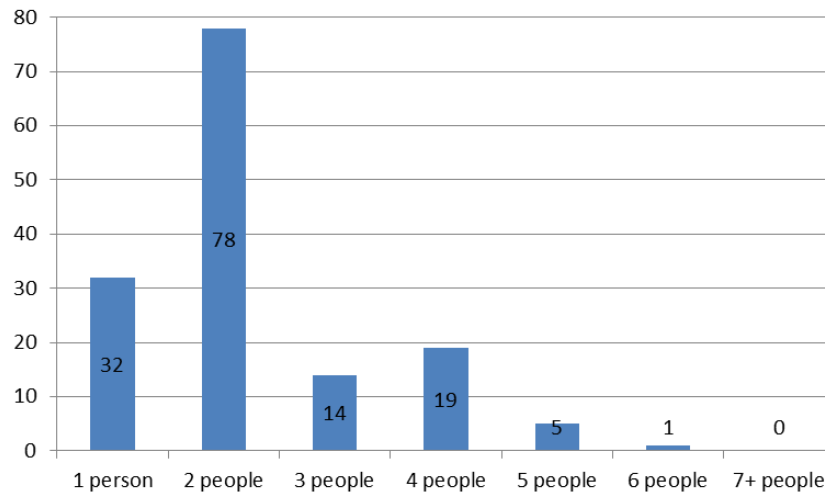


Powered by esd

The majority of properties (73.2%) are **owned by those who live in them**. This is higher than the Test Valley average of 70.4%.

13.4% of Kimpton households are **privately rented**, and 10.1% are **socially rented**. This compares to 12.9% and 14.4% respectively across Test Valley.

### Households by number of residents



52.3% of Kimpton's households are occupied by two people, and 21.5% by one person. 26.2% of the parish's households are occupied by more than two people.

Kimpton has 9 households with **dependent children aged 0 to 4**. That represents 6.0% of the parish's households.

30 households in the parish have **dependent children of all ages**. That represents 20.1% of the parish's households.

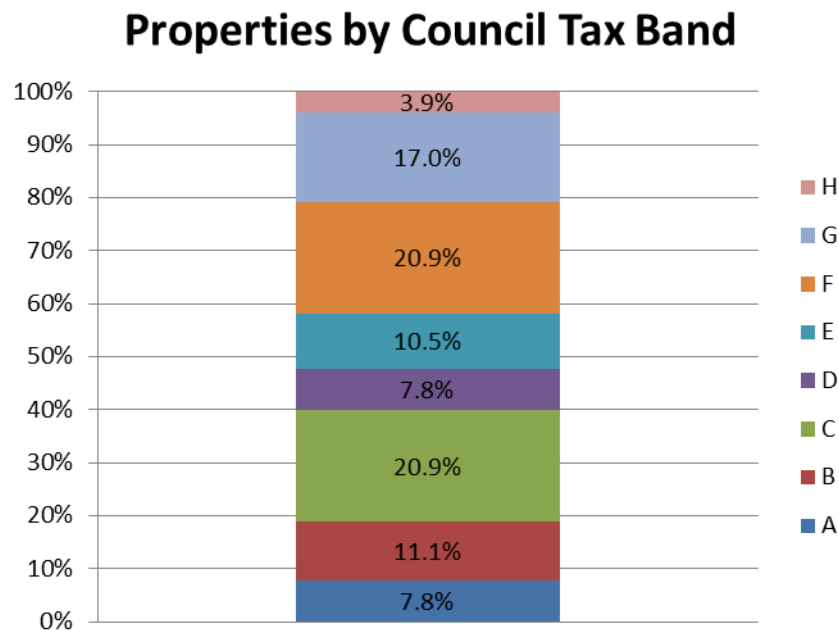
### House prices

According to Zoopla, the average house prices (as of September 2016) in the villages of Kimpton parish are:

- In **Kimpton** the average house price is **£709,135**. This has increased by 23.1% in the last five years.
- In **Great Shoddiesden** is average house price is **£454,729**. This has increased by 23.1% in the last five years.
- In **Little Shoddiesden** is average house price is **£283,160**. This has increased by 23.8% in the last five years.

It is estimated that **38.2% of households in north rural Test Valley cannot afford to buy a private property**. The north rural area includes the wards of Penton Bellinger , Anna, Amport, Bourne Valley, Harewood, and Over Wallop.

## Council Tax Bands



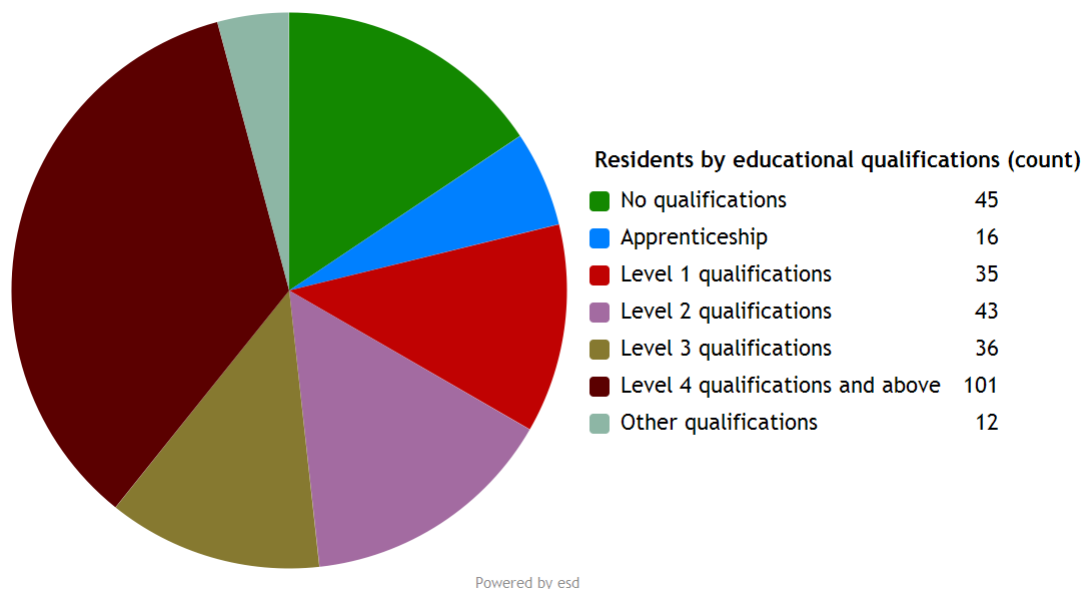
18.9% of Kimpton properties are at the **lower** end of the property market (Bands A and B). This compares to 22.2% for Test Valley as a whole.

39.2% of the parish's properties are in the **middle** range of the property market (Bands C to E). This compares to 60.8% across the whole borough.

41.8% of Kimpton's properties are at the **higher** end of the property market (Bands F to H). This compares to 17.1% of all Test Valley properties.

## Education

35.1% of Kimpton's residents have achieved **level 4 qualifications** and above compared to 30.5% in Test Valley as a whole. 15.6% of Kimpton's residents have **no qualifications** compared to 18.4% in Test Valley.



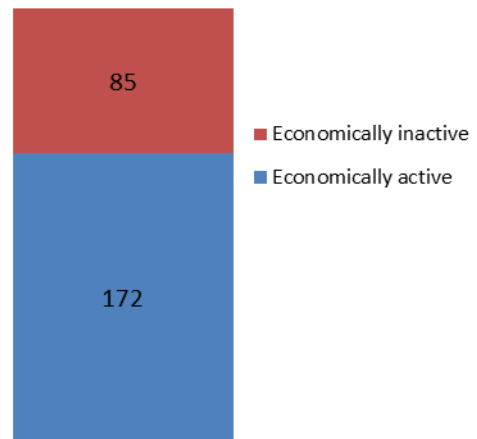
No qualifications	No academic or professional qualifications.
Level 1	1+O level passes, 1+CSE/GCSE any grades, NVQ level 1, Basic/Essential skills, NVQ Level 1.
Level 2	5+O level passes, 5+GCSEs (grades A*-C), 1 A level, 2-3 AS levels, City and Guilds Craft, NVQ level 2.
Level 3	2+A levels, Higher School certificate, NVQ level 3, City and Guilds Advanced Craft, BTEC National.
Level 4/5	Degree (e.g. BA, BSc) higher degree (e.g. MA, PhD, PGCE), NVQ levels 4 and 5, qualified teacher, nurse or accountant status, BTEC Higher.
Other qualification	Level unknown, vocational/work-related qualifications, foreign qualifications.

## Employment

66.9% of Kimpton residents aged 16-74 are **economically active**, compared to 73.4% of Test Valley residents. This includes people in full-, part- and self-employment, those who are actively seeking a job, and full-time students.

The remaining 33.1% of residents aged 16-74 are **economically inactive**, compared to 26.6% of Test Valley residents. This includes people who are retired, long-term sick or disabled, or who look after the home and family.

## Economic activity (count)

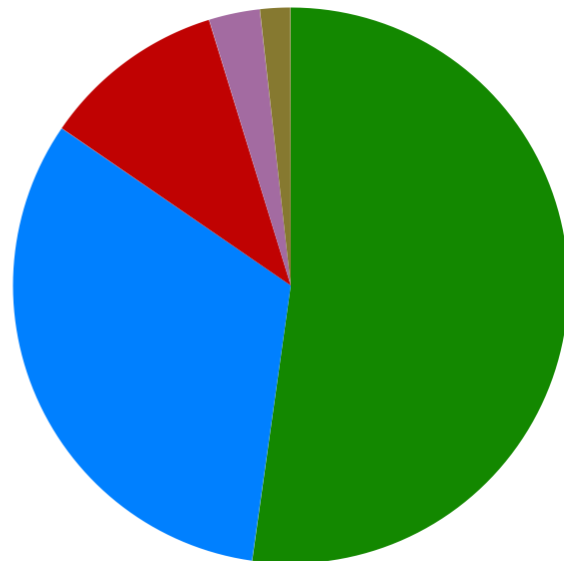


## Health

Kimpton has 10 (3.0%) residents that report being in **bad health** and 6 (1.8%) residents that report being in **very bad health**.

Residents by level of health (count)

Very good health	176
Good health	109
Fair health	36
Bad health	10
Very bad health	6



Powered by esd

## Community plans

Details of any community planning exercises your parish is undertaking can be added here. Please get in touch with the Policy Team at the email address below and we will be more than happy to add information at your request.

## Local facilities

<b>Food stores</b>	None
<b>Other shops</b>	None
<b>Primary schools</b>	Kimpton Primary School
<b>Secondary schools</b>	None
<b>Health facilities</b>	None
<b>Leisure facilities</b>	Park
<b>Public houses</b>	The Welcome Stranger
<b>Community facilities</b>	Kimpton Village Hall
<b>Churches</b>	St Peter's and St Paul's Church
<b>Local recycling centres</b>	None



## Public and community transport

### C1 Cango bus service

This bus service runs between Kimpton and Andover via several Test Valley villages.

More information about the route and the timetable can be found online at:

[http://www3.hants.gov.uk/c1\\_cango\\_time\\_table\\_01-12-2015\\_hf000010525082.pdf](http://www3.hants.gov.uk/c1_cango_time_table_01-12-2015_hf000010525082.pdf)

### C6 Cango bus service

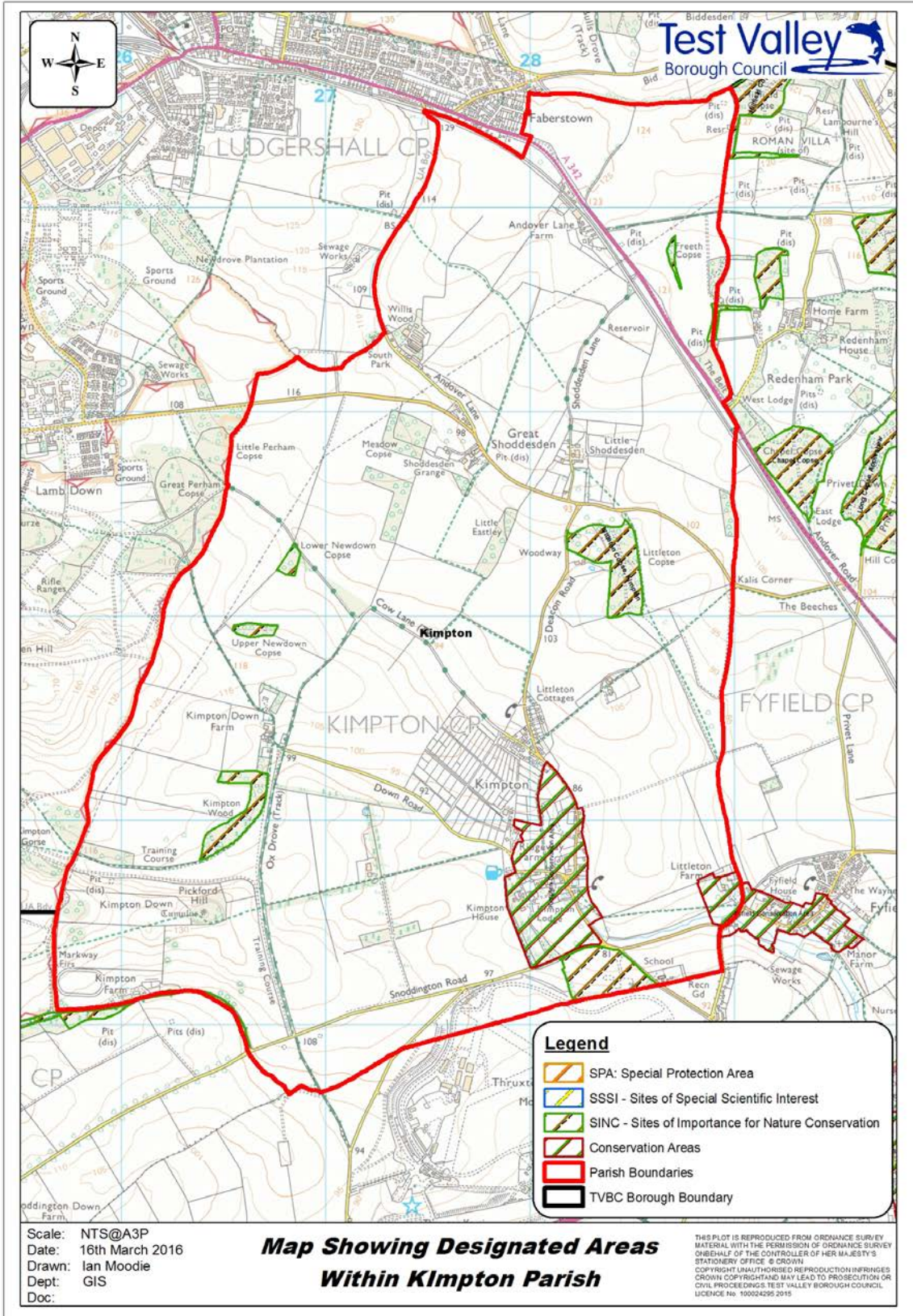
This service operates between Kimpton and Vernham Dean

More information about the route and the timetable can be found online at:

[http://www3.hants.gov.uk/c6\\_cango\\_time\\_table\\_01-12-2015\\_hf000010525358.pdf](http://www3.hants.gov.uk/c6_cango_time_table_01-12-2015_hf000010525358.pdf)

Further community transport information for Test Valley can be found on Hampshire County Council's website:

<http://www3.hants.gov.uk/passengertransport/communitytransport/community-transport.htm>



## **Additional information**

The information in this profile has been prepared by Test Valley Borough Council's Policy Team in partnership with the Local Government Association. If you would like further information, please contact the Policy Team on 01264 368000 or [policyteam@testvalley.gov.uk](mailto:policyteam@testvalley.gov.uk), and we will be happy to work with you to provide a more detailed profile.

This profile contains key information for you to use to contribute to the development of a Neighbourhood Plan or other community project. If you know of any additional information about the parish that may be of use (for example, information on local facilities) please get in touch and we will endeavor to work with you to add to or change the profile.

Please note that most of the data featured in this profile is taken from the 2011 Census, whilst the population data is taken from Hampshire County Council's 2016 Small Area Population Forecast. Therefore, there is some discrepancy in population figures.