

Longparish

Parish Profile



2021

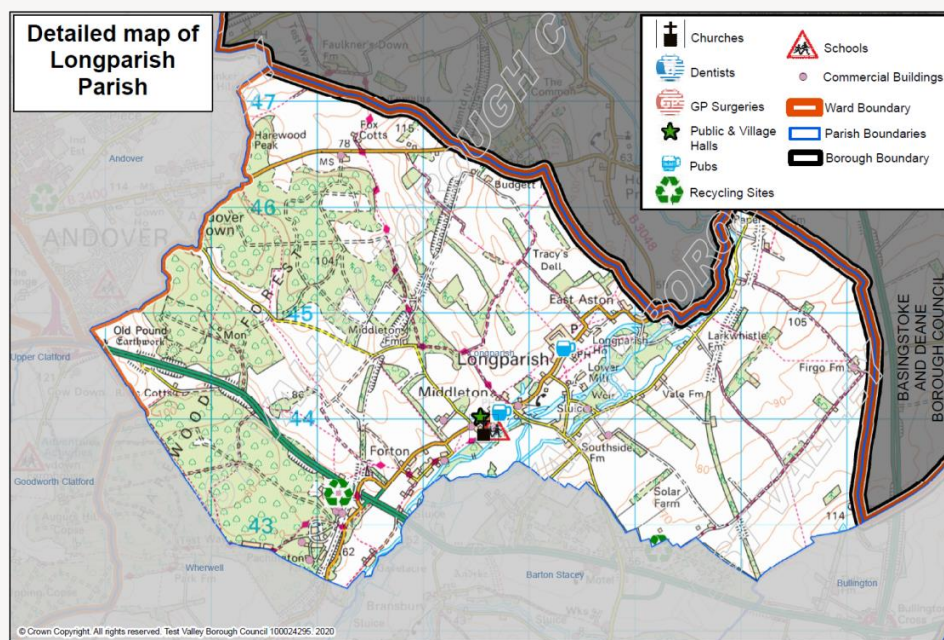
Test Valley
Borough Council 



Longparish Parish Profile

This profile provides a summary of the latest available information on the demographic make-up of the parish of Longparish within Test Valley. It looks at information on topics such as the population structure, economic, housing, health and educational information for the parish.

Longparish is one of the Test Valley's fifty-nine parishes. It has an area of **2156.02** hectares which represents 3.43% of the total area of Test Valley; in terms of size, **Longparish** is Test Valley's **fourth largest** parish. The parish's population is **653** and its population density is **0.30** people per hectare, which is lower than the borough's average population density of **2.10** people per hectare.



Census Data

Some of the data used in this profile is taken from the 2011 Census; where this is the case, this is clearly labelled. Though this data is from several years ago, the breadth and volume of information the Census collects means it remains a valuable source of data and a reasonable indication of current trends. Data from the 2021 Census will be released by the Office for National Statistics in 2022/3. When this happens, this profile will be updated and circulated to Councillors.

Elected Representatives

Hampshire County Councillor

Councillor David Drew

Division: Test Valley Central

Email: david.drew@hants.gov.uk

Telephone: 07738 289902

Test Valley Borough Councillor

Councillor David Drew

Ward: Harewood

Email: clldrew@testvalley.gov.uk

Telephone: 01264 357024



Longparish Parish Council

Chairman: Councillor Christian Dryden

Email: christian.drydenpc@longparish.org.uk

Clerk: Sally Lawman

Email: clerk@longparish.org.uk

Telephone: 01264 738716

Population

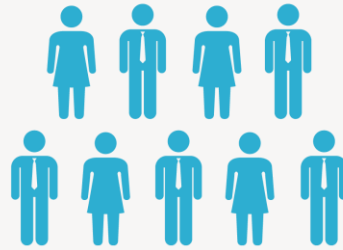


652

Population 2020



11.5% decrease



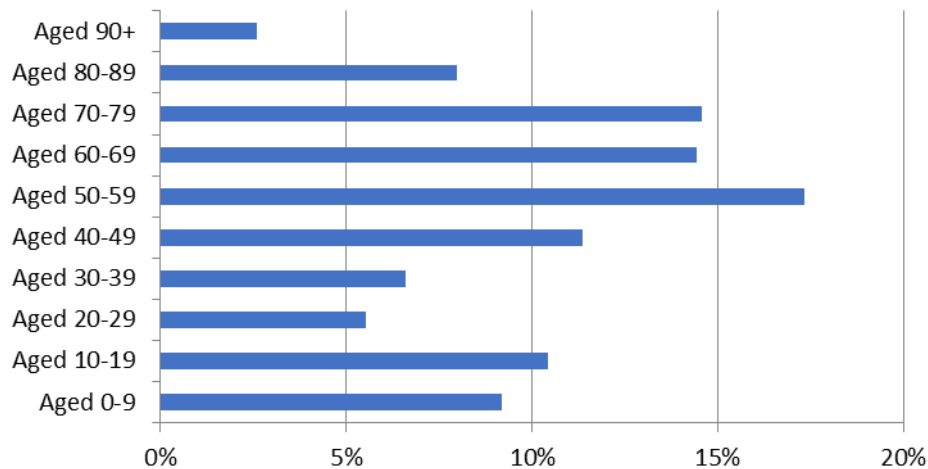
577

Estimated population in 2027



0.49% of Test Valley's population

Percentage of the population by age group 2020



Population Data

Age breakdown

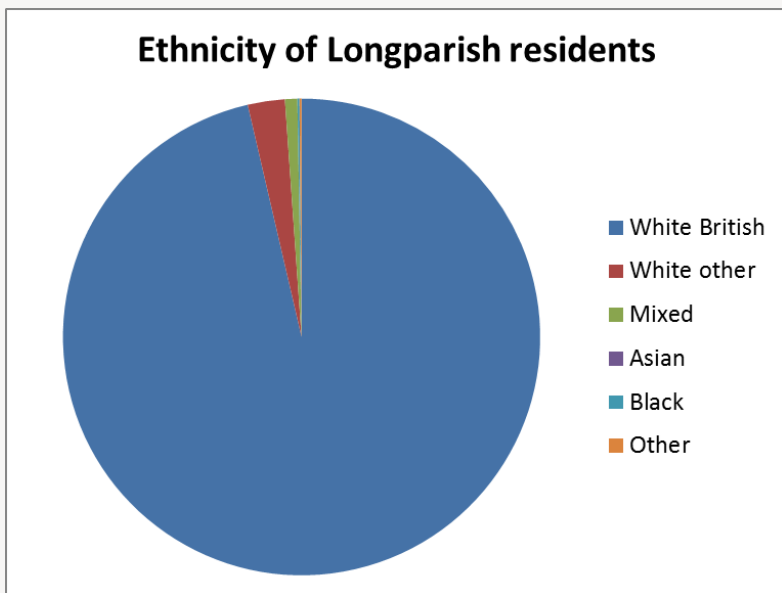
At 19.6% Longparish has a smaller percentage of **young people** (aged 0-19) than the borough average of 22.8%. By 2027, the proportion of young people will decrease to 16.3%, and will then be 6.7% lower than the borough average. At 12.1%, Longparish has lower amount of **young adults** (aged 20-39) than the wider borough at 19.9%. The proportion of young adults living in the parish is expected to decrease by 0.3% between 2020 and 2027, a smaller fall than the 1.2% decrease forecast for the wider borough.

Middle aged residents (aged 40-69) constitute 43.1% of Longparish's population, which is higher than the borough average of 40.2%. This is forecast to decrease slightly to 41.6% by 2025, and will then be 2.0% below the borough average.

At 25.2%, Longparish has a higher percentage of those **aged 70 and over**, 8.0% above the borough average. By 2027 this percentage is forecast to increase by 5.2%, which is considerably higher than the forecasted increase of 1.5% for the borough as a whole.

This population data is taken from the Small Area Population Forecasts (SAPF), provided by Hampshire County Council. Further information on this is available online at: <https://www.hants.gov.uk/landplanningandenvironment/facts-figures/population/estimates-forecasts>.

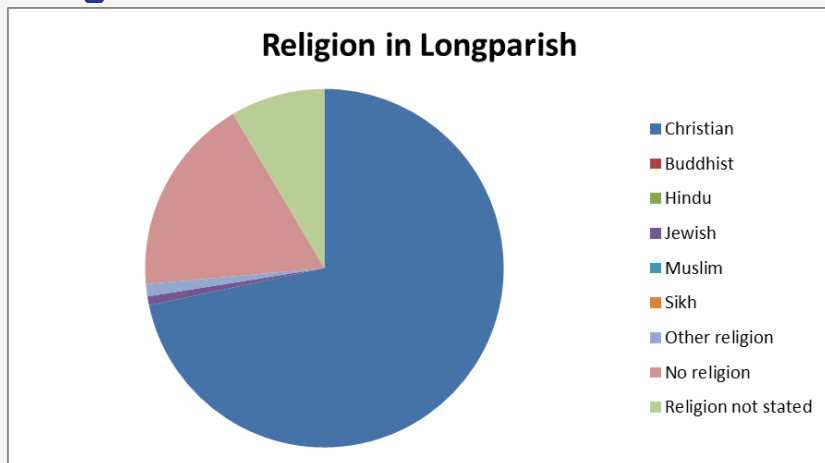
Ethnicity



White British	White other	Mixed/multiple ethnic groups	Asian	Black	Other
96.4%	2.5%	0.8%	0.0%	0.1%	0.1%

The graph shows the ethnic groups within Longparish by percentage. In the 2011 Census, 96.4% of Longparish's population identified as White British. This is above the borough average of 93.1%. Longparish's level of ethnic diversity is also lower than England as a whole, where 79.8% of the population are White British.

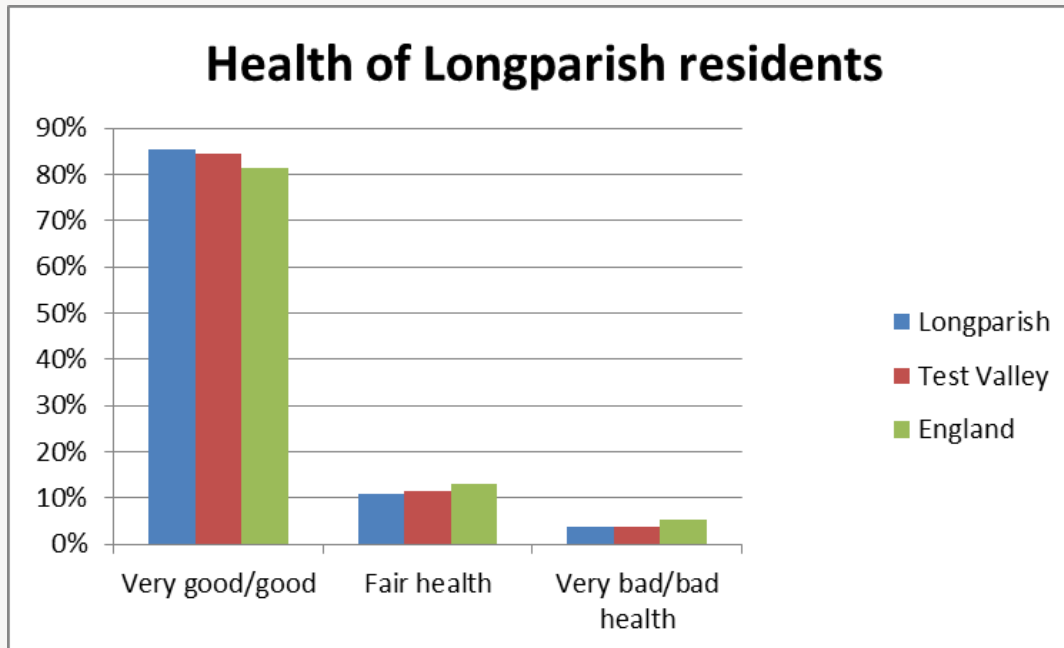
Religion



Christian	Buddhist	Hindu	Jewish	Muslim	Sikh	Other religion	No religion	Religion not stated
71.6%	0.0%	0.0%	0.8%	0.0%	0.0%	1.1%	17.9%	8.5%

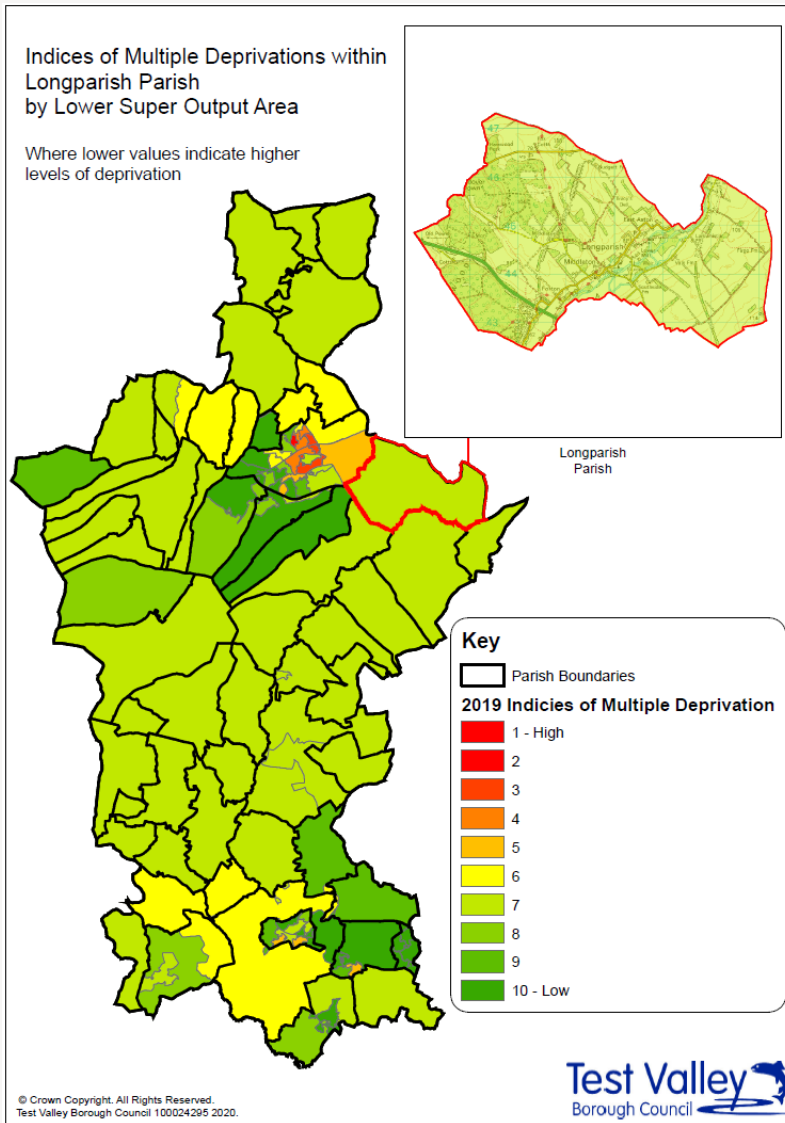
In the 2011 Census, the majority of Longparish residents (71.6%) classified themselves as Christian, which is higher than the borough average of 65.7% as well as the English average of 59.8%. The next largest group are those that say they have no religion (17.9%), which is lower than both the Test Valley average (25.1%) and the English average (27.7%). Of those groups that do adhere to a religion, other religions are collectively the second largest group at 1.1%; this is higher than the equivalent figures for Test Valley and England where in both instances, 0.4% of people identified as adhering to other religions.

Health



1.2% of Longparish's residents are long term sick or disabled (2011 Census)

Deprivation



The English Index of Multiple Deprivation 2019 is designed to identify areas where communities lack resources and are in need. To do this, seven factors are considered, which are:

- income deprivation;
- employment deprivation;
- education, skills and training deprivation;
- health deprivation and disability;
- crime;
- barriers to housing and services;
- living environment deprivation.

Areas are scored on each of these factors, and ranked nationally from least deprived to most deprived.

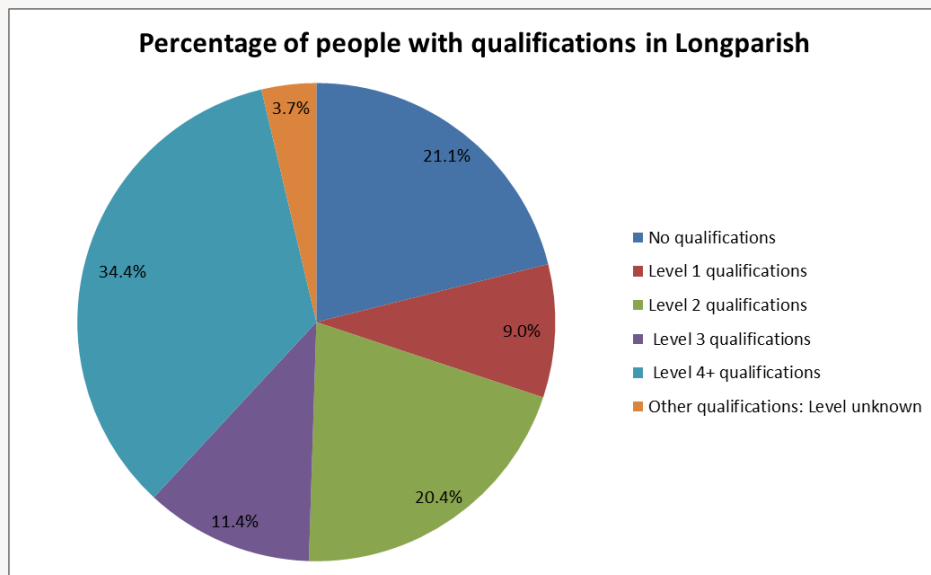
This map shows the deprivation scores for parish of Longparish against all areas in Test Valley. Of 32,844 areas ranked across the country, Longparish ranks 21,136th this puts it in the **40% of least deprived** areas in the country.

More specifically, Longparish ranks in the top 10% of most deprived areas when it comes to physical proximity of local services. Longparish is also in the top 10% of most deprived areas for the quality of housing available as well as being the top 30% of most deprived areas for its 'outdoors' living environment, which relates to air quality and road traffic accidents.

Further information about the Ministry of Housing, Communities and Local Government 2019 English Indices of Deprivation is available online at: <https://www.gov.uk/government/statistics/english-indices-of-deprivation-2019>

Education and employment

Qualifications

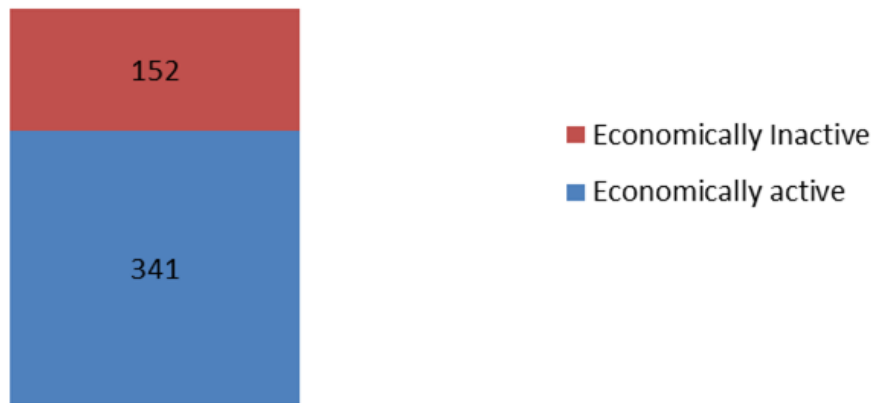


The pie chart shows the qualifications gained by Longparish residents aged 16-74 years, according to the 2011 Census. 75.2% of people living in Longparish have at least one GCSE or equivalent qualification, a figure which is lower than the Test Valley average of 77.6%. Additionally, 3.7% of residents have an unknown qualification, which is similar to the borough average. This means that 21.1% of Longparish residents between 16 and 74 have no academic, vocational or professional qualifications, which is 2.7% higher than the borough average. In addition, 34.4% of Longparish residents have a level 4 qualification or above, which is equivalent to at least an undergraduate degree. This is higher than the borough average of 30.5%.

No qualifications	No academic or professional qualifications.
Level 1	1+'O' level passes, 1+CSE/GCSE any grades, NVQ level 1, Basic/Essential skills, NVQ Level 1.
Level 2	5+'O' level passes, 5+GCSEs (grades A*-C) 1 A level/2-3 AS levels. City and Guilds Craft, Apprenticeship, NVQ level 2.
Level 3	2+'A' levels, Higher School certificate, NVQ level 3, City and Guilds Advanced Craft, BTEC National.
Level 4/5	Degree (for example BA, BSc) higher degree (for example Master's, PhD, PGCE), NVQ levels 4 and 5, Qualified Teacher status, Nurse or Accountancy. BTEC Higher level.
Other qualification	Level unknown, vocational/work-related Qualifications, Foreign qualifications.

Economic Activity

Economic activity (count)



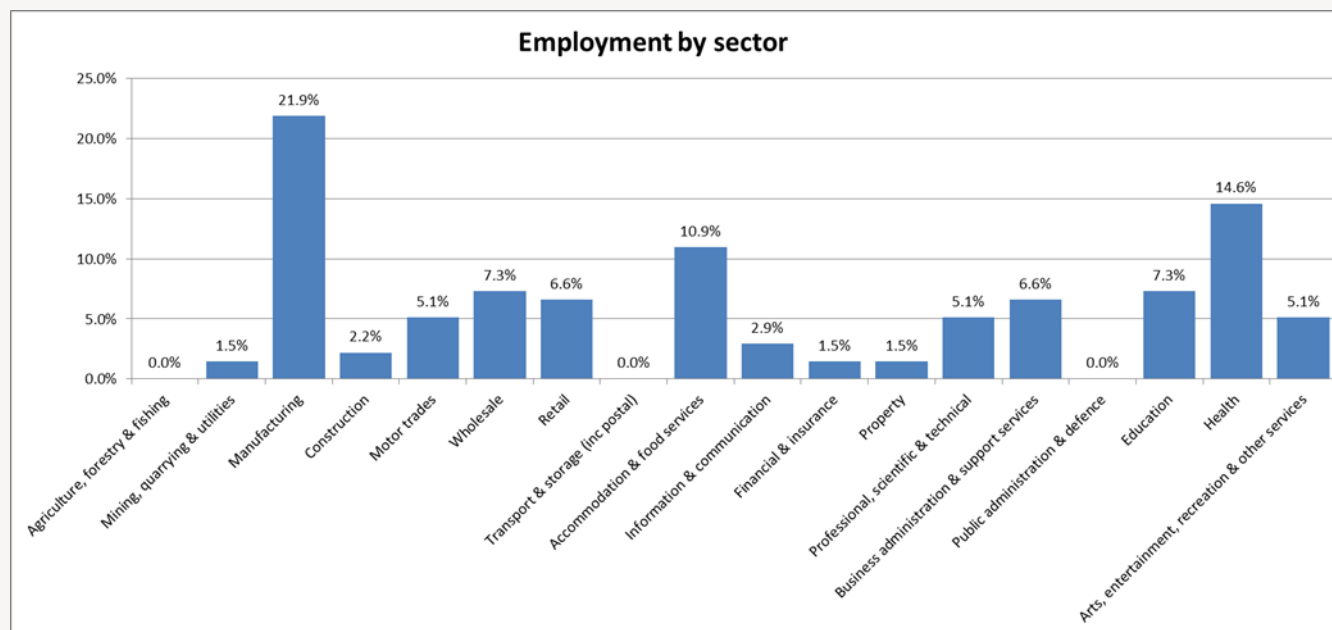
According to the 2011 Census, 69.2% of Longparish residents aged 16-74 are economically active, lower than Test Valley as a whole where the figure is 73.4% of residents. This includes people in full-, part- and self-employment, those who are actively seeking a job, and full-time students.

The remaining 30.8% of residents aged 16-74 are economically inactive, compared to 26.6% of Test Valley residents. This includes people who are retired, long-term sick or disabled, or who look after the home and family.

Employment by sector

Following the Local Government Boundary Commission for England (LGBCE) review in 2017, new Ward and Parish boundaries have been introduced in Test Valley. Hence, this information has been produced on a 'best fit' basis, it's not an exact representation of Longparish but provides as good an indication as is currently feasible.

This data is taken from the 2018 UK Business Register and Employment Survey which is produced by the Office for National Statistics (ONS). This dataset relies upon a sample of 85,000 businesses across the country, from which these estimates are modelled. As such, there will be some sampling variability which result in the quality of the estimates deteriorating for smaller geographies. A better indication will be available from the 2021 Census which will be available in 2022/3; once this data is released, this profile will be updated and circulated to Borough and Parish Councillors.



This graph shows the percentage of the workforce by sector, according to the latest Business Register and Employment Survey in 2018. The largest sector employing people in Longparish is Manufacturing (21.9%) followed by Health (14.6%) and Accommodation & Food Services (10.9%).

Properties

Total number of properties

313

Dwellings

Estimated Average Value

12.8%
Terraced



£ 382,019

37.1%
Semi-Detached



£ 563,455

1.6%
Flat



£ 169,379

47.0%
Detached



£ 907,598

1.6%
Mobile

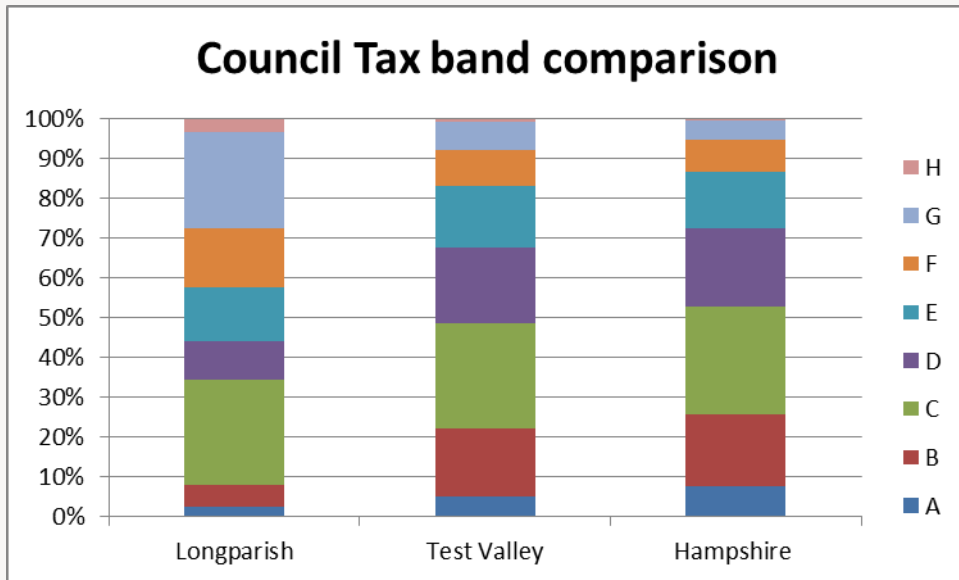


Figure not available

According to Zoopla estimates, the average value of a property in Longparish in 2020 is **£ 708,211**. This is an increase of 12.8% over the past 5 years and makes Longparish the twenty-fifth most expensive parish in Test Valley.

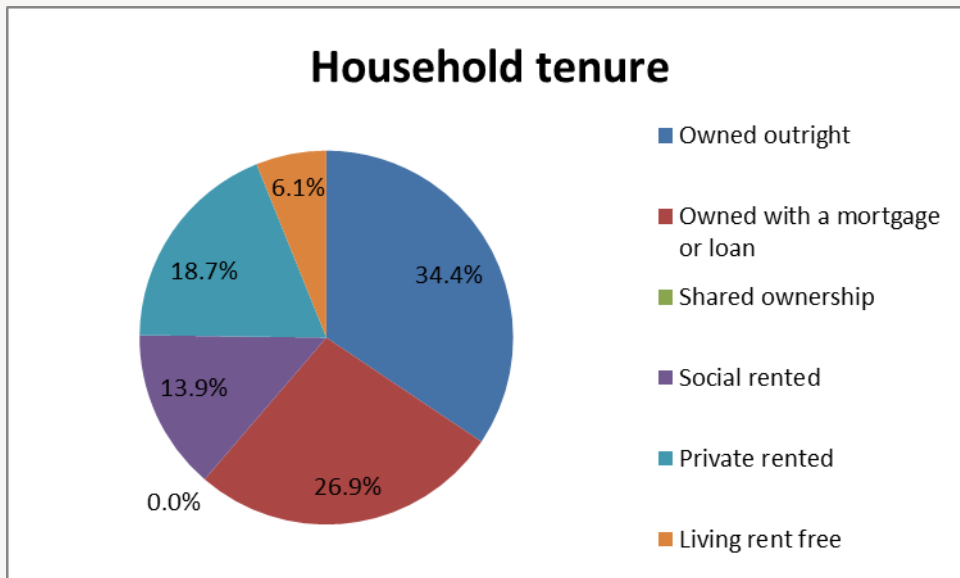
In Hampshire, the average value of a property is £381,137 (a 11.3% rise in 5 years) whilst in South East England, the average is £424,800 (a 10.6% rise in 5 years).

Council Tax Bandings



		Longparish	Test Valley
Bands F-H		42.5%	16.9%
Bands C-E		49.5%	60.8%
Bands A-B		8.0%	22.3%

Household Tenure



Household tenure refers to the financial arrangements under which people occupy their homes and is taken from the 2011 Census.

This pie chart depicts the tenure of households in Longparish. 61.3% of people in Longparish live in a property which they own outright or with a mortgage or loan. This is significantly lower than both the average for Test Valley, which is 70.3%, and the average for the South East of England, which is 67.6%.

13.9% of residents rent their property from a Housing Association, slightly lower than the borough average of 14.4%.

18.7% of residents privately rent their property; this figure is higher than the borough average of 12.9%.

Unusually, 6.1% of residents live in their properties rent free. This is higher than the Test Valley average of 1.7%.

Community facilities

Within Longparish there are a range of community facilities including two stores (one of which includes a Post Office), a Village Hall, a Community Hall, a Cricket Ground, The Cricketers Inn pub, and St Nicholas Church. More unusually, the parish is also home to two multiple fisheries as well as a Distillery.

The parish has a primary school, Longparish Church of England Primary School, as well as a pre-school, Longparish Little School. The nearest GP surgery and railway station are both located in the nearby town of Whitchurch.



Community plans

Longparish has a **Village Design Statement** which was adopted by Test Valley Borough Council in April 2003 as Supplementary Planning Guidance. The design statement provides a description of the natural and man-made features of the village of Longparish that are regarded by the members of the community as particularly distinctive. The document provides a guide to ensure that future development and change is managed to respect and preserve the character and distinctiveness of the village. It should thus contribute positively to protecting and enhancing the special nature and qualities of the community that is Longparish today.

The Village Design Statement can be accessed using the following link:

<https://www.testvalley.gov.uk/planning-and-building/planningpolicy/village-design-statements/longparishvds>

Details of any community planning exercises your parish is undertaking can be added here. Please get in touch with the Policy Team at the email address below and we will be more than happy to add information at your request.

Test Valley Borough Council – Policy Team

The information in this profile has been prepared by Test Valley Borough Council's Policy Team. If you have any further queries or would like to talk to us about other information you would like to see then please contact one of the Policy Team who will be happy to help:

policyteam@testvalley.gov.uk

Hollie French

Senior Policy Officer

James Hill

Policy Officer

Halil Coskun

Policy Officer