

# Thrupton Parish Profile



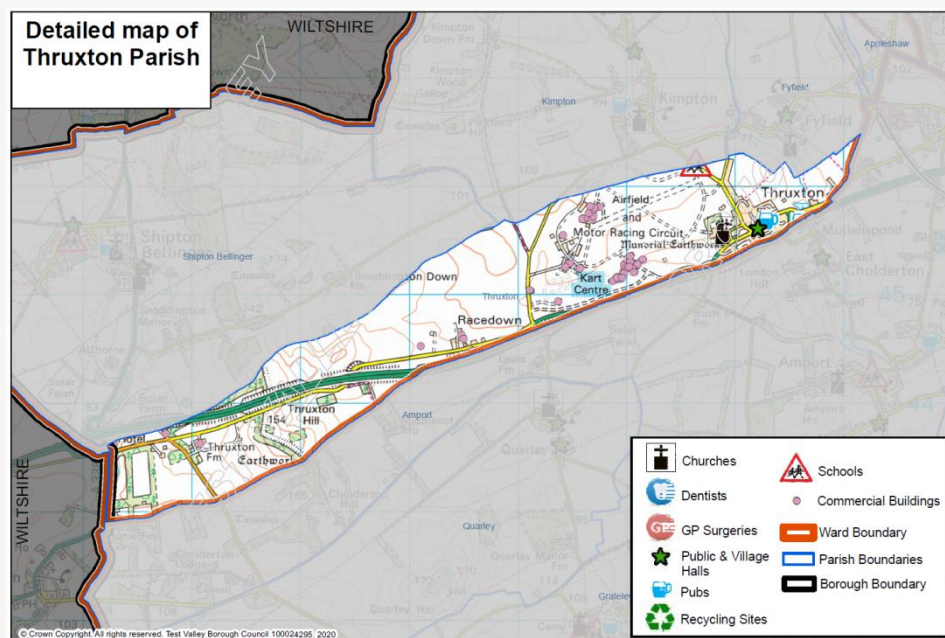
2021



# Thruxton Parish Profile

This profile provides a summary of the latest available information on the demographic make-up of the parish of Thruxton within Test Valley. It looks at information on topics such as the population structure, economic, housing, health and educational information for the parish.

**Thruxton** is one of the Test Valley's fifty-nine parishes. It has an area of **632.97** hectares which represents **1.01%** of the total area of Test Valley; in terms of size, **Thruxton** is Test Valley's **forty-first largest** parish. The parish's population is **620** and its population density is **0.97** people per hectare, which is lower than the borough's average population density of **2.10** people per hectare.



## Census Data

Some of the data used in this profile is taken from the 2011 Census; where this is the case, this is clearly labelled. Though this data is from several years ago, the breadth and volume of information the Census collects means it remains a valuable source of data and a reasonable indication of current trends. Data from the 2021 Census will be released by the Office for National Statistics in 2022/3. When this happens, this profile will be updated and circulated to Councillors.

## Elected Representatives

### Hampshire County Councillor

**Councillor Christopher Donnelly**

**Division:** Andover West

**Email:** [chris.donnelly@hants.gov.uk](mailto:chris.donnelly@hants.gov.uk)

**Telephone:** 07738 289858

### Test Valley Borough Councillor

**Councillor Philip Lashbrook**

**Ward:** Bellinger

**Email:** [cllrplashbrook@testvalley.gov.uk](mailto:cllrplashbrook@testvalley.gov.uk)

**Telephone:** 01264 773588



### Thruxton Parish Council

**Chairman:** Councillor Peter Christie

**Clerk:** Heather Bourner

**Email:** [heather.bourner@googlemail.com](mailto:heather.bourner@googlemail.com)

**Telephone:** 07880 706601

# Population



620

Population 2020



0.3%  
decrease



618

Estimated population  
in 2027



0.47% of Test Valley's population

## Age breakdown

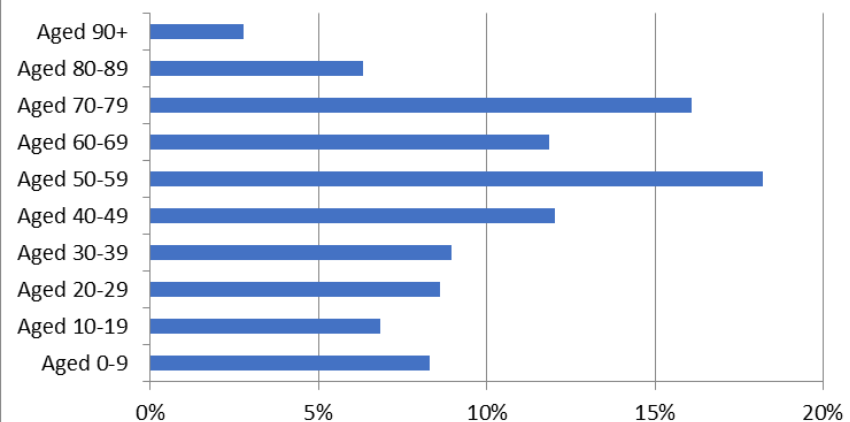
At 15.3% Thrupton has a significantly smaller percentage of young people (aged 0-19) than the borough average of 22.8%. By 2027, the proportion of young people will increase to 16.7%, and will then be 6.3% lower than the borough average.

At 17.9%, Thrupton has a smaller percentage of young adults (aged 20-39) than the borough average of 19.9%. The proportion of young adults living in the parish is expected to fall by 0.1% between 2020 and 2027, compared to the fall of 1.2% across the borough.

**Middle aged residents** (aged 40-69) constitute 42.1% of Thrupton's population, which is higher than the borough average of 40.2%. This is forecast to decrease slightly to 40.5% by 2027, 0.9% above the borough average.

At 24.7%, Thrupton has a significantly larger percentage of those aged 70 and over, 7.5% above the borough average. By 2027 this percentage is forecast to increase by 0.4%, a slower rate than the forecast increase for the borough as a whole of 1.5%.

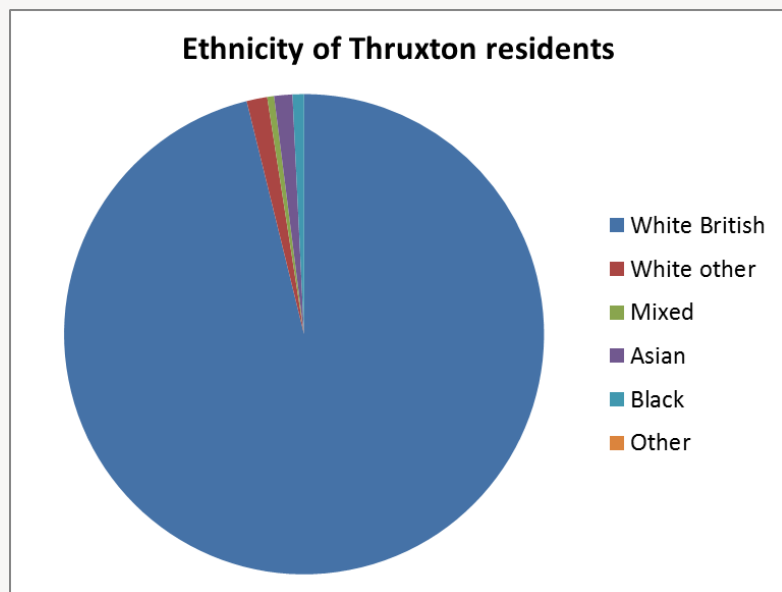
Percentage of the population by age group 2020



## Population Data

This population data is taken from the Small Area Population Forecasts (SAPF), provided by Hampshire County Council. Further information on this is available online at: <https://www.hants.gov.uk/landplanningandenvironment/facts-figures/population/estimates-forecasts>.

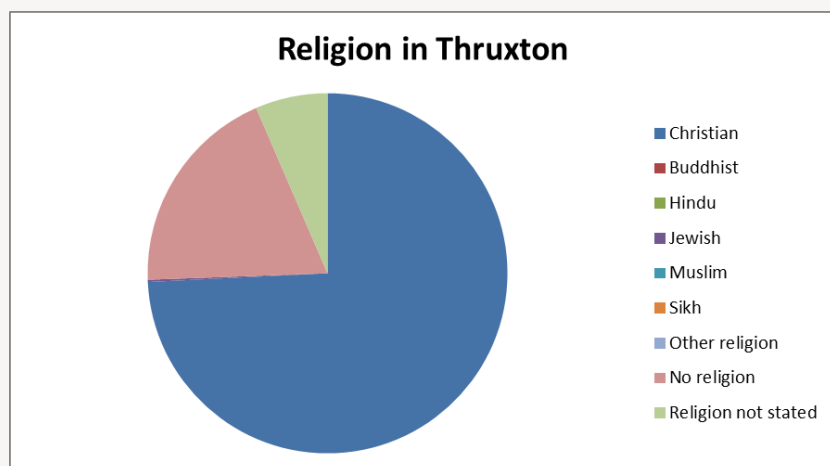
## Ethnicity



White British	White other	Mixed/multiple ethnic groups	Asian	Black	Other
96.2%	1.4%	0.5%	1.2%	0.8%	0.0%

The graph shows the ethnic groups within Thruxton by percentage. In the 2011 Census, 96.2% of Thruxton's population identified as White British. This is slightly above the borough average of 93.1%. Thruxton's level of ethnic diversity is also lower than England as a whole, where only 79.8% of the population are White British.

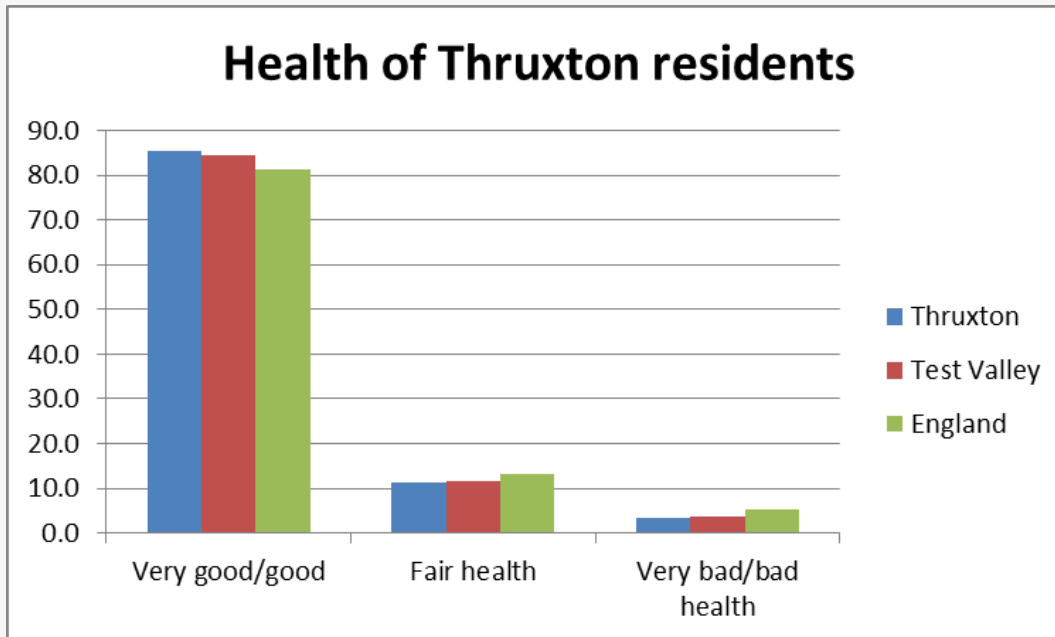
## Religion



Christian	Buddhist	Hindu	Jewish	Muslim	Sikh	Other religion	No religion	Religion not stated
74.3%	0.0%	0.0%	0.2%	0.0%	0.0%	0.0%	19.1%	6.5%

At the 2011 Census, the majority of Thruxton residents (74.3%) classify themselves as Christian, which is higher than the borough average of 65.7% and the English average of 59.8%. The next largest group are those that say they have no religion (19.1%), which is lower than both the Test Valley average (25.1%) and the English average (27.7%). Of those groups that do adhere to a religion, Judaism is the second largest group at 0.2%, this is 0.3% lower than the equivalent figure for England.

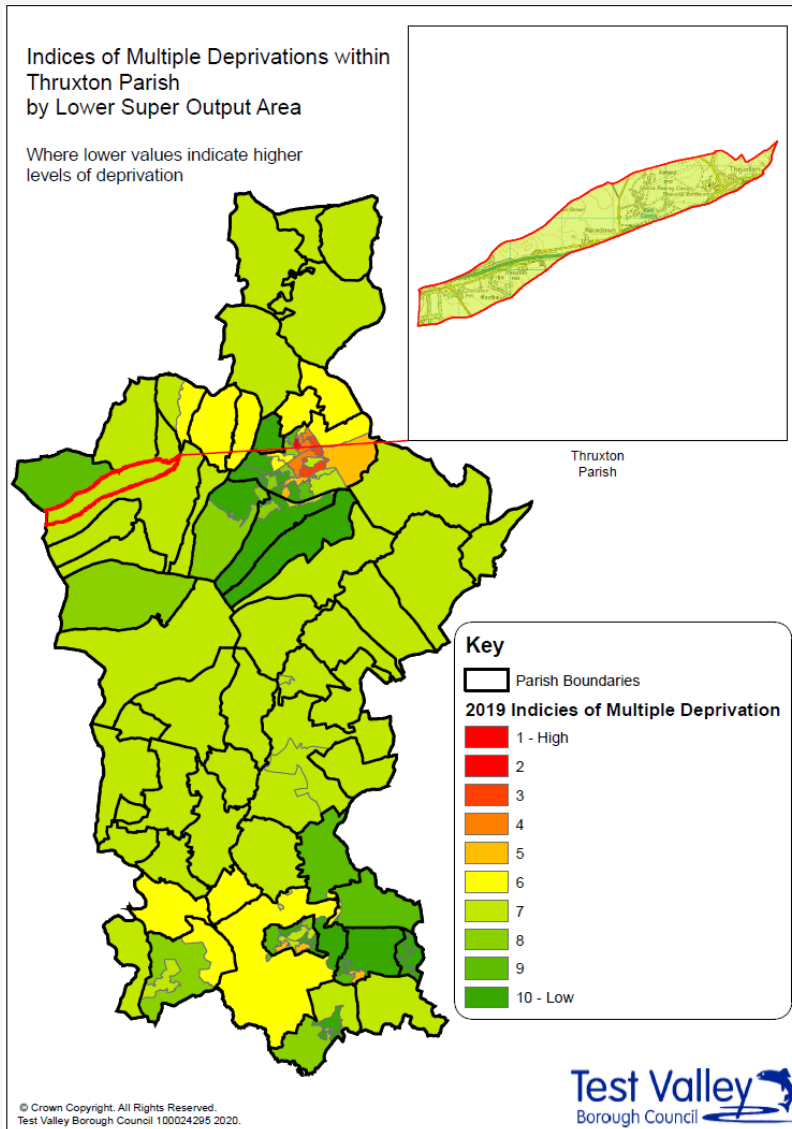
## Health



At the 2011 Census, 85.6% of residents in Thruxton said they felt that they were in very good or good health. This is slightly higher than the average for Test Valley (84.6%) as well as the average for England (81.4%). 3.3% of the population rated their health as bad or very bad, which is lower than both the borough (3.8%) and English averages (5.4%)

**1.6% of Thruxton's residents are long term sick or disabled (2011 Census)**

# Deprivation



The English Index of Multiple Deprivation 2019 is designed to identify areas where communities lack resources and are in need. To do this, seven factors are considered, which are:

- income deprivation;
- employment deprivation;
- education, skills and training deprivation;
- health deprivation and disability;
- crime;
- barriers to housing and services;
- living environment deprivation.

Areas are scored on each of these factors, and ranked nationally from least deprived to most deprived.

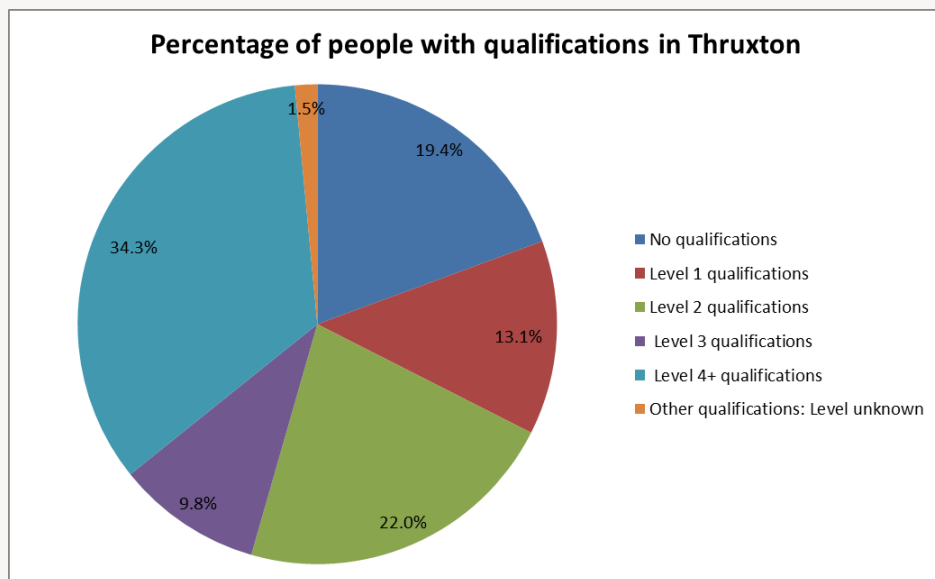
This map shows the deprivation scores for parish of Thrupton against all areas in Test Valley. Of 32,844 areas ranked across the country, Thrupton ranks 21,510<sup>th</sup> this puts it in the **40%** of **least deprived** areas in the country.

More specifically, Thrupton ranks in the top 10% of most deprived areas when it comes to physical proximity of local services. Thrupton is also in the top 30% of most deprived areas for the quality of housing available.

*Further information about the Ministry of Housing, Communities and Local Government 2019 English Indices of Deprivation is available online at: <https://www.gov.uk/government/statistics/english-indices-of-deprivation-2019>*

# Education and employment

## Qualifications

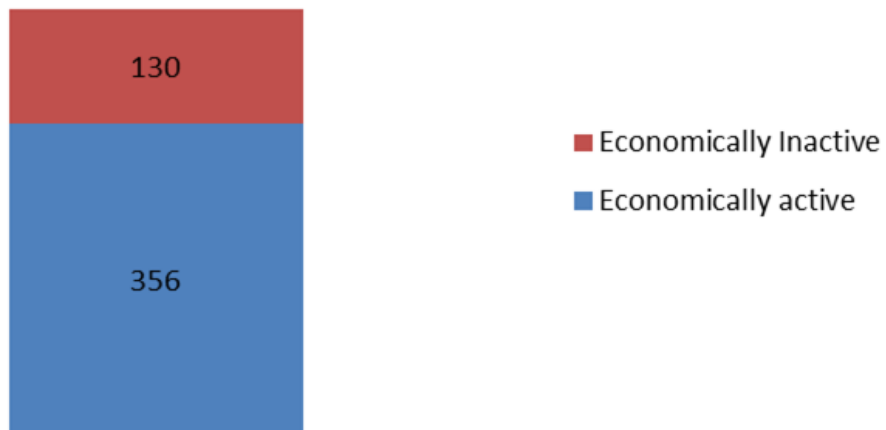


The pie chart shows the qualifications gained by Thruxton's residents aged 16-74 years, according to the 2011 Census. 79.2% of people living in Thruxton have at least one GCSE or equivalent qualification, a figure which is similar to the Test Valley average of 77.6%. Additionally, 1.5% of residents have an unknown qualification, which is similar to the borough average. This means that 19.4% of Thruxton residents between 16 and 74 have no academic, vocational or professional qualifications, which is 1.0% higher than the borough average. In addition, 34.3% of Thruxton residents have a level 4 qualification or above, which is equivalent to at least an undergraduate degree. This is slightly higher than the borough average of 30.5%.

No qualifications	No academic or professional qualifications.
Level 1	1+'O' level passes, 1+CSE/GCSE any grades, NVQ level 1, Basic/Essential skills, NVQ Level 1.
Level 2	5+'O' level passes, 5+GCSEs (grades A*-C) 1 A level/2-3 AS levels. City and Guilds Craft, Apprenticeship, NVQ level 2.
Level 3	2+'A' levels, Higher School certificate, NVQ level 3, City and Guilds Advanced Craft, BTEC National.
Level 4/5	Degree (for example BA, BSc) higher degree (for example Master's, PhD, PGCE), NVQ levels 4 and 5, Qualified Teacher status, Nurse or Accountancy. BTEC Higher level.
Other qualification	Level unknown, vocational/work-related Qualifications, Foreign qualifications.

## Economic Activity

### Economic activity (count)



According to the 2011 Census, 73.3% of Thruxton's residents aged 16-74 are economically active, similar than Test Valley as a whole where the figure is 73.4% of residents. This includes people in full-, part- and self-employment, those who are actively seeking a job, and full-time students.

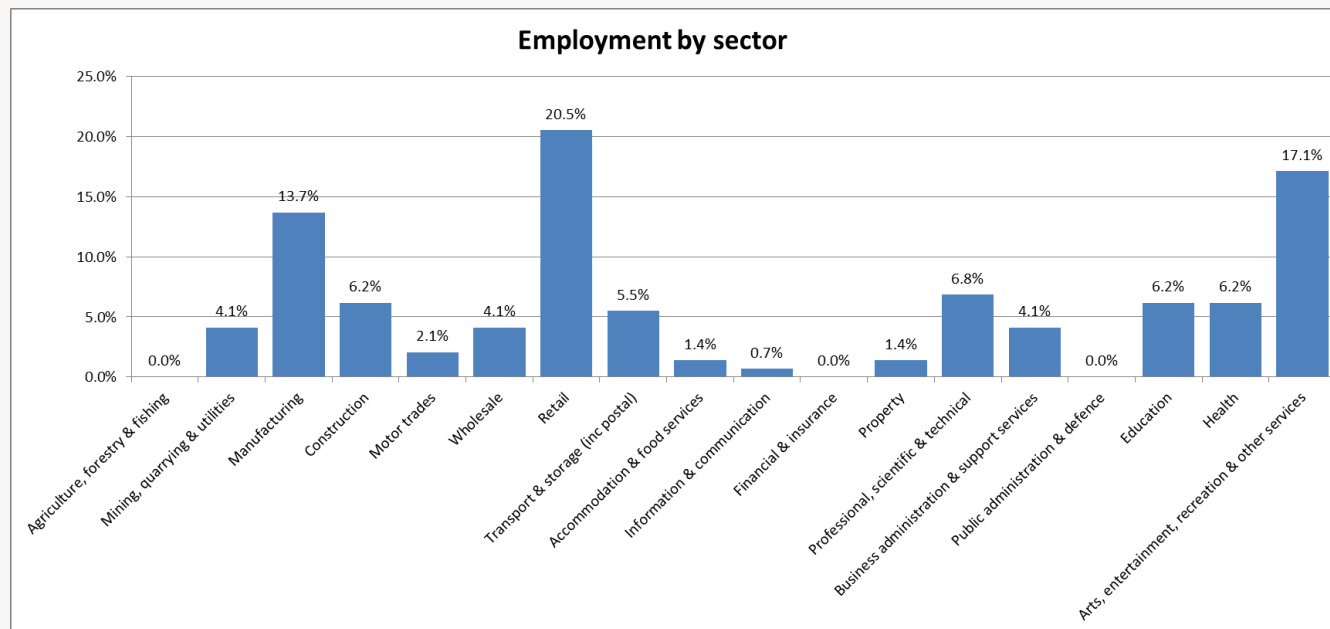
The remaining 26.7% of residents aged 16-74 are economically inactive, compared to 26.6% of Test Valley residents. This includes people who are retired, long-term sick or disabled, or who look after the home and family.



## Employment by sector

Following the Local Government Boundary Commission for England (LGBCE) review in 2017, new Ward and Parish boundaries have been introduced in Test Valley. Hence, this information has been produced on a 'best fit' basis, it's not an exact representation of Thruxton but provides as good an indication as is currently feasible.

This data is taken from the 2018 UK Business Register and Employment Survey which is produced by the Office for National Statistics (ONS). This dataset relies upon a sample of 85,000 businesses across the country, from which these estimates are modelled. As such, there will be some sampling variability which result in the quality of the estimates deteriorating for smaller geographies. A better indication will be available from the 2021 Census which will be available in 2022/3; once this data is released, this profile will be updated and circulated to Borough and Parish Councillors.








This graph shows the percentage of the workforce by sector, according to the latest Business Register and Employment Survey in 2018. The largest sector employing people in Thruxton is Retail (20.5%) followed by Arts, Entertainment and Other Services (17.1%) and Manufacturing (13.7%).

# Properties

Total number of properties

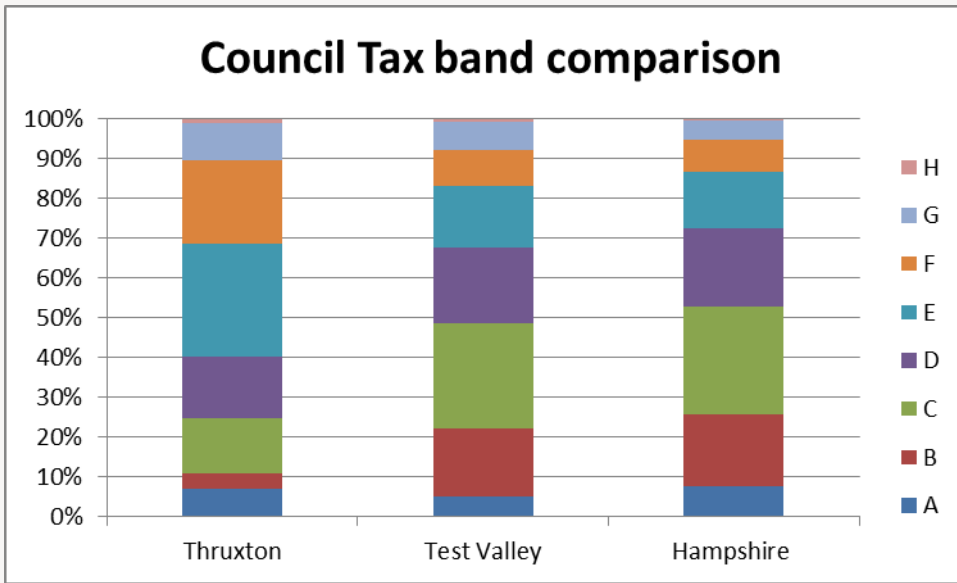
**279**




Dwellings		Estimated Average Value
10.0% <i>Terraced</i>		£279,668
25.6% <i>Semi-Detached</i>		£347,234
2.8% <i>Flat</i>		£169,379
61.2% <i>Detached</i>		£535,566
0.4% <i>Mobile</i>		<i>Figure not available</i>

According to Zoopla estimates, the average value of a property in Thruxton in 2021 is **£488,829**. This is an increase of 20% over the past 5 years and makes Thruxton the fortieth most expensive parish in Test Valley.

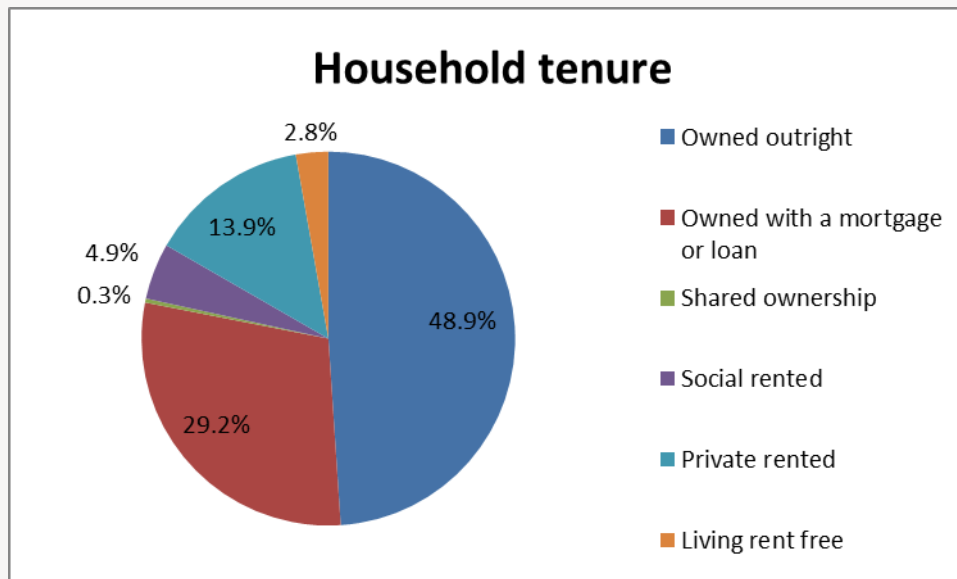
In Hampshire, the average value of a property is £381,137 (a 12% rise in 5 years) whilst in South East England, the average is £424,800 (an 11% rise in 5 years).

## Council Tax Bandings



	Thrupton	Test Valley
Bands F-H 	<b>31.5%</b>	<b>16.9%</b>
Bands C-E 	<b>57.3%</b>	<b>60.8%</b>
Bands A-B 	<b>11.1%</b>	<b>22.2%</b>

## Household Tenure



Household tenure refers to the financial arrangements under which people occupy their homes and is taken from the 2011 Census.

This pie chart depicts the tenure of households in Thrupton. 78.1% of people in Thrupton live in a property which they own outright or with a mortgage or loan. This is higher than both the average for Test Valley, which is 70.3%, and the average for the South East of England, which is 67.6%.

4.9% of residents rent their property from a Housing Association, which is significantly lower than the borough average of 14.4%.

13.9% of residents privately rent their property; this figure is slightly higher than borough average of 12.9%.

# Community facilities

Within Thruxton there are a range of community facilities including St Peter and St Paul's Church, Thruxton Memorial Hall and a Recreation Ground. Thruxton is also home to Thruxton Aerodrome and Thruxton Motorsport Circuit which hosts a range of race meets and other driving events.

In 2019 the village was also judged to by the Hampshire Association of Local Councils to be the county's Small Village of the Year

The nearest primary school, Kimpton, Thruxton and Fyfield Church of England Primary School, is situated in the neighboring parish of Kimpton whilst the nearest GP surgery is in Tidworth. The closest railway stations are located in Andover and Grateley.



# Community plans

Thruxton has a **Village Design Statement** which was adopted by Test Valley Borough Council in February 2006 as Supplementary Planning Guidance. The design statement provides a description of the natural and man-made features of the village of Thruxton that are regarded by the members of the community as particularly distinctive. The document provides a guide to ensure that future development and change is managed to respect and preserve the character and distinctiveness of the village. It should thus contribute positively to protecting and enhancing the special nature and qualities of the community that is Thruxton today.

The Village Design Statement can be accessed using the following link:

<https://www.testvalley.gov.uk/planning-and-building/planningpolicy/village-design-statements/ThruxtonVDS>

Thruxton has a **Neighbourhood Plan**, this was 'made' following a positive referendum in May 2021. The plan explores issues that are important to the parish, set out a vision for the area and provide planning policies relating to the use and development of land.

The Neighbourhood Plan can be accessed using the following link:

<https://www.testvalley.gov.uk/planning-and-building/planningpolicy/neighbourhood-planning/thruxton-neighbourhood-plan>

## Test Valley Borough Council – Policy Team

The information in this profile has been prepared by Test Valley Borough Council's Policy Team. If you have any further queries or would like to talk to us about other information you would like to see then please contact one of the Policy Team who will be happy to help:

[policyteam@testvalley.gov.uk](mailto:policyteam@testvalley.gov.uk)

**Hollie French**

Senior Policy Officer

**James Hill**

Policy Officer

**Halil Coskun**

Policy Officer