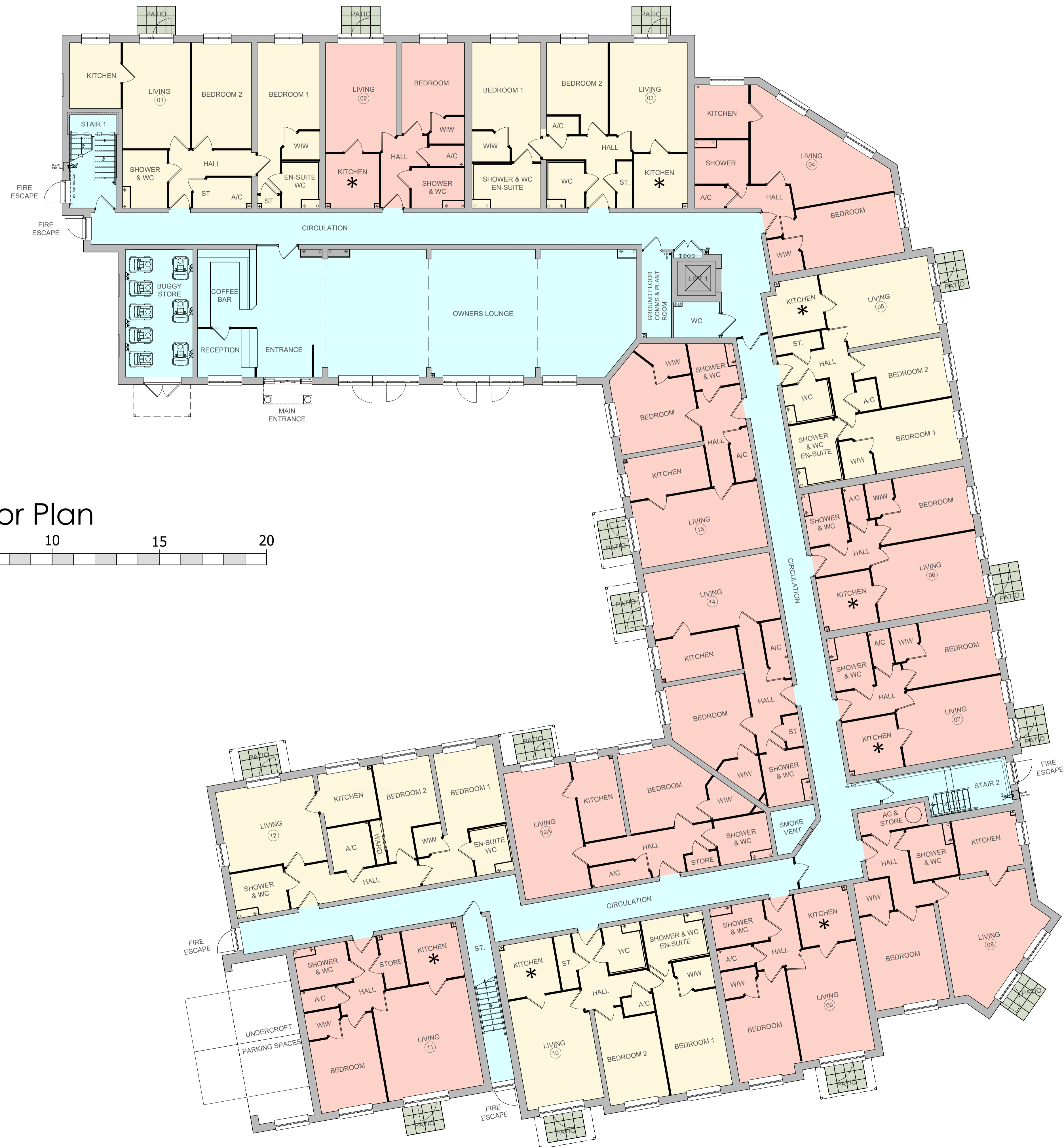
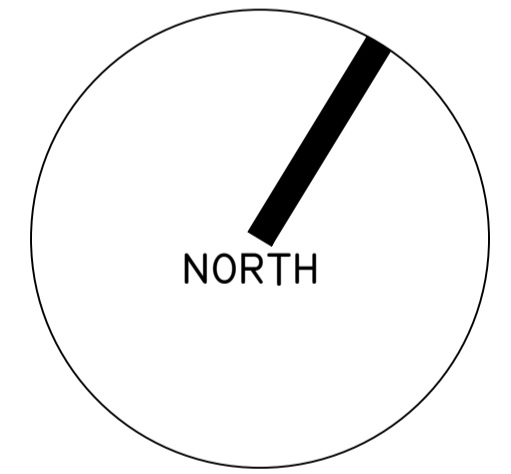
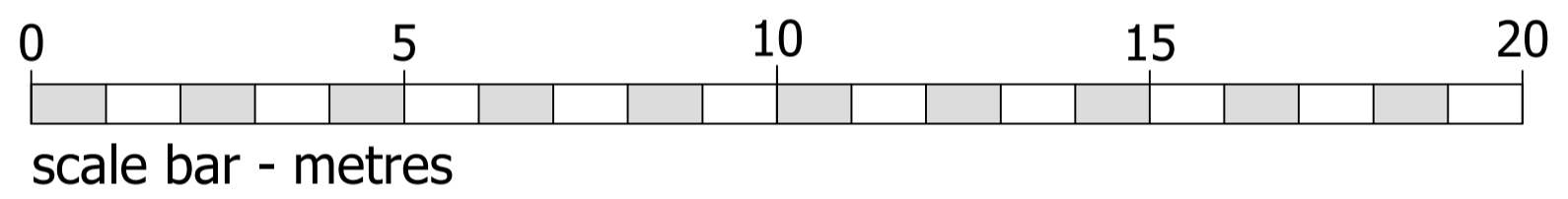


REVISIONS

Rev.	Description	Date	By
A	Doors & windows amended to flats 5, 6 & 7.	Aug '23	KLS
B	Amendments to OL, guest suite, buggy store and flat 11 locations.	Nov '23	KLS



Ground Floor Plan



FFL +16.750M AOD

FLAT MIX:

1 BED APARTMENTS =	09
2 BED APARTMENTS =	05
<b>TOTAL</b>	<b>= 14</b>

<span style="display:inline-block; width:10px; height:10px; background-color:lightcoral; border:1px solid black;"></span> - 1 BED APARTMENTS
<span style="display:inline-block; width:10px; height:10px; background-color:lightyellow; border:1px solid black;"></span> - 2 BED APARTMENTS
<span style="display:inline-block; width:10px; height:10px; background-color:lightblue; border:1px solid black;"></span> - COMMUNAL AREAS
<span style="display:inline-block; width:10px; height:10px; background-color:lightcoral; border:1px solid black; text-align:center; font-size:8px;">*</span> - INTERNAL KITCHEN

©CHURCHILL RETIREMENT LIVING

**planning issues**  
TOWN PLANNING AND ARCHITECTURAL DESIGN

Rob Jackson RIBA

Churchill House \* Parkside  
Ringwood \* Hampshire BH24 3JG  
Telephone: (01425) 462109  
Fax : (01425) 462101  
E-mail: design@planningissues.co.uk

Client

**Churchill Retirement Living**

Project Title  
Retirement Living Apartments  
Edwina Mountbatten House - Broadwater Road  
Romsey  
SO51 8GH

Drawing Title  
PROPOSED GROUND FLOOR PLAN  
PLANNING APPLICATION

Scale	1:100 @ A1	Date	JUNE 2023
Drawn	KLS	Checked	RJ
Drawing No.	10123RS - PA02	Rev.	B