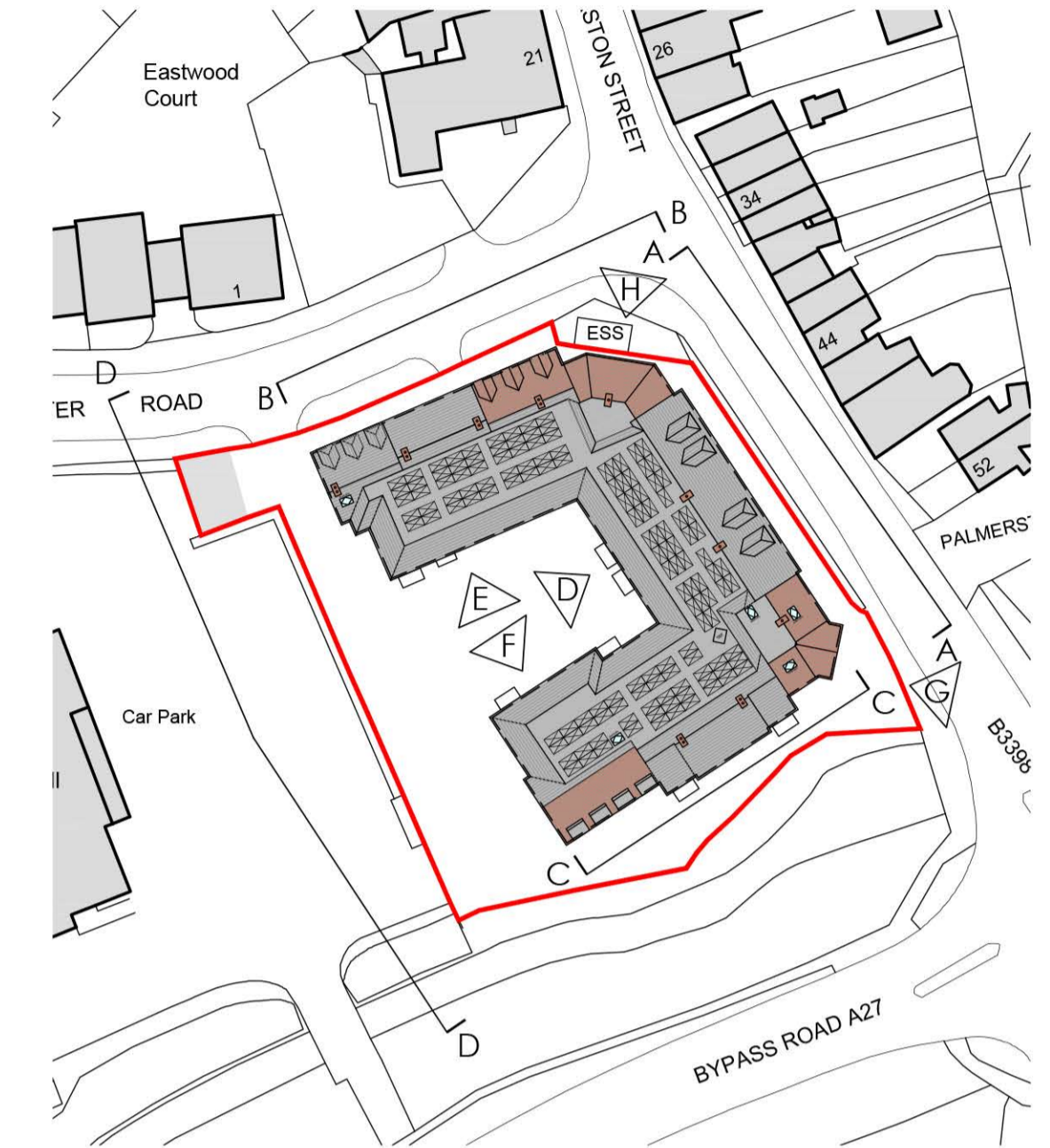


REVISIONS

Rev.	Date	By
A	Aug '23	KLS
General minor amendments. Tax windows removed. Brick ribbon added. Finials and detailing added to gable fascias.		
B	Nov '23	KLS
General minor amendments. Red clay tile hanging added. Brick ribbon reduced. Main entrance amended.		



Crosfield Hall Car Park Contextual Elevation

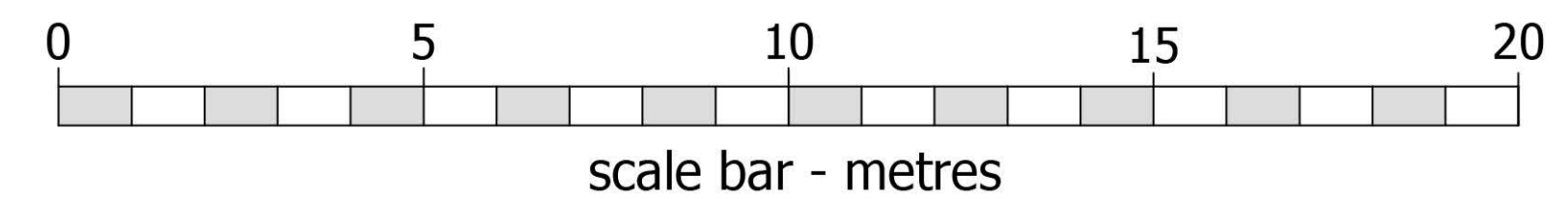
Key to Elevations



- 1 Prefabricated chimney
- 2 Natural slate roof tiles
- 3 Red clay roof tiles
- 4 Dormer windows
- 5 Black uPVC gutters and fascia
- 6 Red facing brick
- 7 Matching brick window heads & cills
- 8 Painted heads & cills
- 9 White-painted brickwork, heads & cills
- 10 Projecting GRP canopies over flat doors
- 11 Tax window
- 12 White uPVC casement windows
- 13 Painted metal balustrades
- 14 Feature cast stone entrance portico
- 15 Red clay tile hanging
- 16 Feature brick ribbon

← crosfield hall facing elevation →

Elevation D-D facing Crosfield Hall



©CHURCHILL RETIREMENT LIVING

planning **issues**
TOWN PLANNING AND ARCHITECTURAL DESIGN
Rob Jackson RIBA
Churchill House • Parkside
Ringwood • Hampshire BH24 3EG
Telephone: 01423 462109
Fax: 01423 462101
E-mail: design@planningissues.co.uk

Client
Churchill Retirement Living

Project Title
Retirement Living Apartments
Edwina Mountbatten House
Romsey
SO51 8GH

Drawing Title
PROPOSED CROSFIELD HALL ELEVATION
PLANNING APPLICATION

Scale 1:100 @ A1 Date JUNE 2023
Drawn KLS Checked RJ
Drawing No. Rev.
10123RS - PA09 B