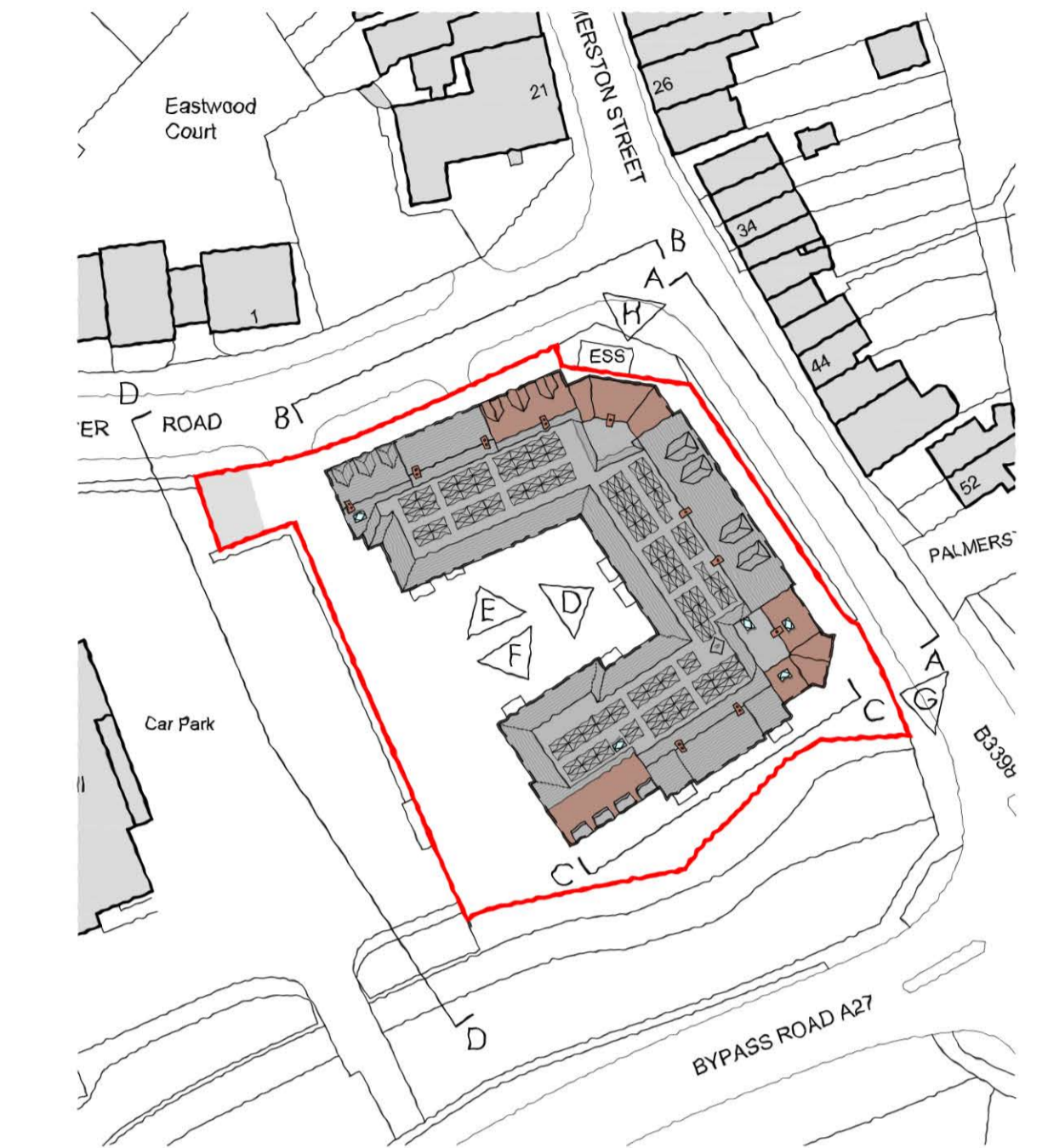
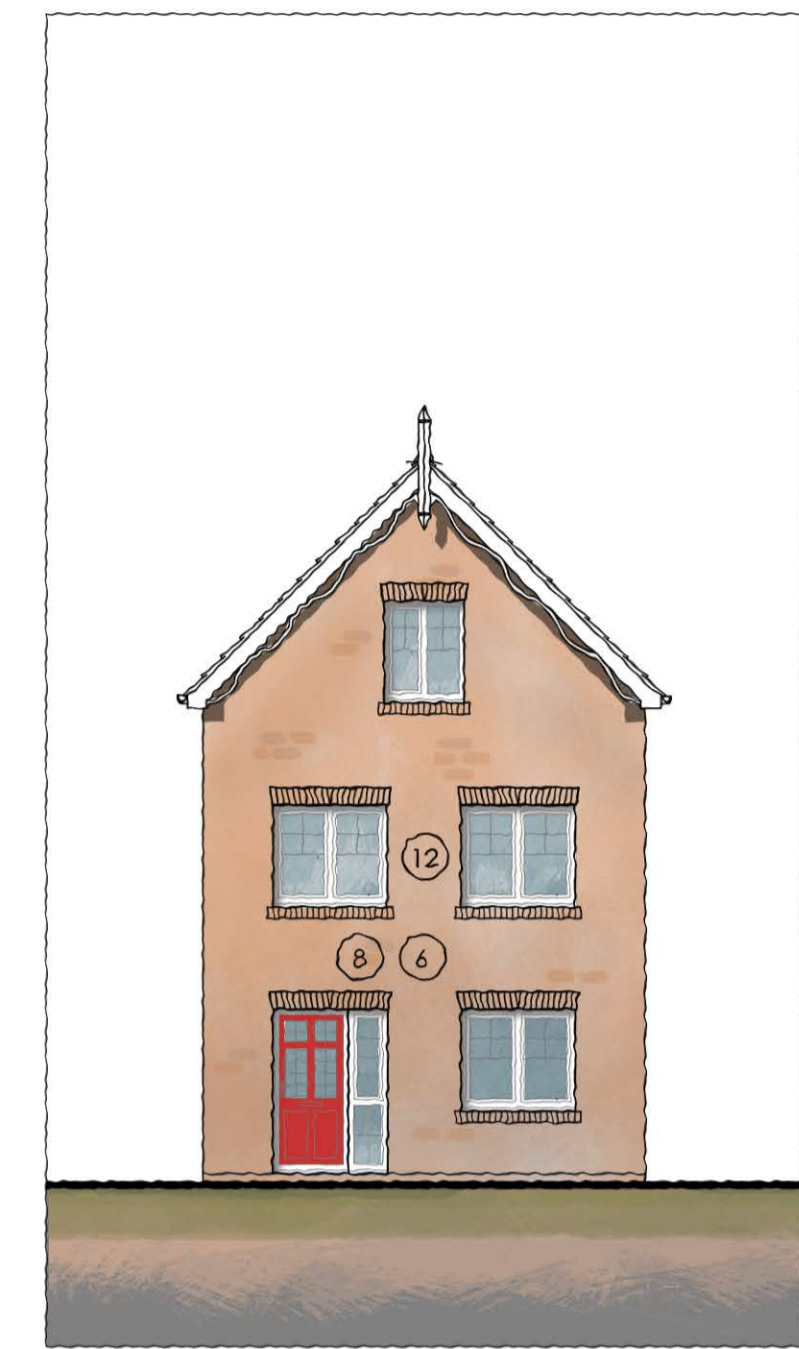


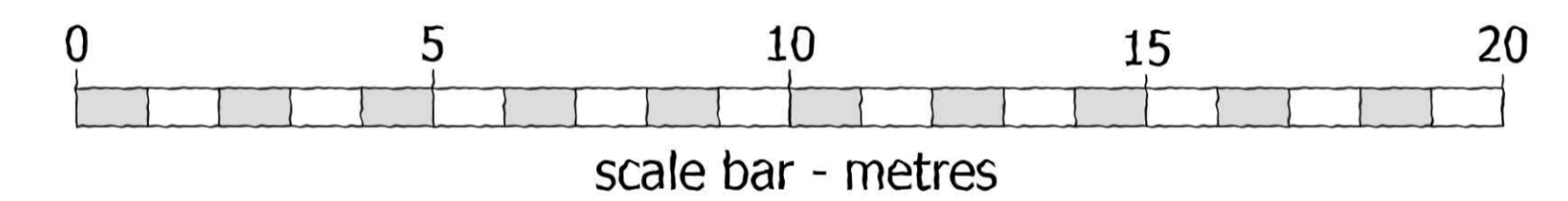
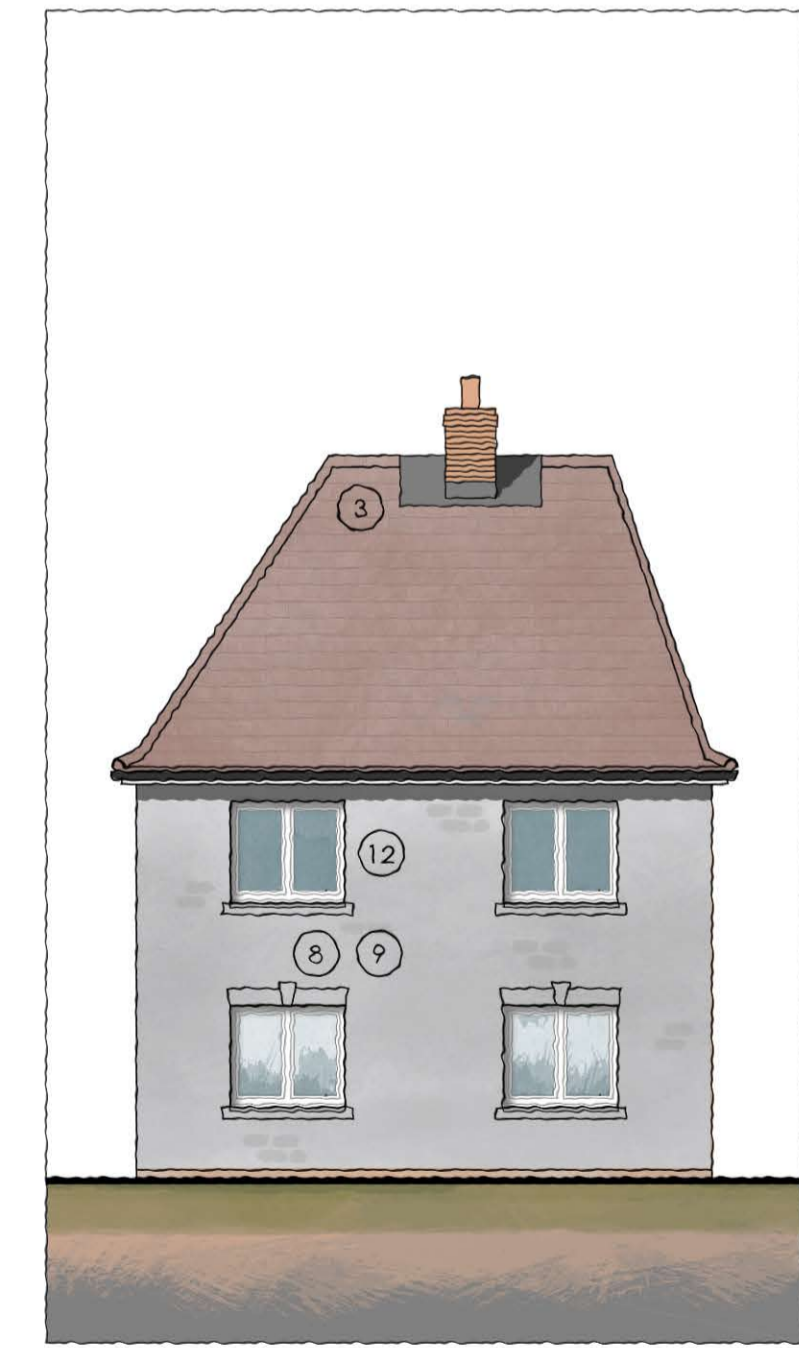
REVISIONS		
Rev.	Date	By
A	Aug '23	KLS
General minor amendments. Gable above flat 4D lowered. Brick ribbon added to gable.		
B	Nov '23	KLS
General minor amendments. Gable above Guest Suite lowered. Main entrance and buggy store relocated.		



Internal Courtyard Elevation E

Elevation G
South-East Gable

Key to Elevations



Internal Courtyard Elevation F

Elevation H
North Gable

- ① Prefabricated chimney
- ② Natural slate roof tiles
- ③ Red clay roof tiles
- ④ Dormer windows
- ⑤ Black uPVC gutters and fascia
- ⑥ Red facing brick
- ⑦ Matching brick window heads & cills
- ⑧ Painted heads & cills
- ⑨ White-painted brickwork, heads & cills
- ⑩ Projecting GRP canopies over flat doors
- ⑪ Tax window
- ⑫ White uPVC casement windows
- ⑬ Painted metal balustrades
- ⑭ Feature cast stone entrance portico
- ⑮ Red clay tile hanging
- ⑯ Feature brick ribbon

©CHURCHILL RETIREMENT LIVING

planning issues
TOWN PLANNING AND ARCHITECTURAL DESIGN

Rob Jackson RIBA

Churchill House * Parkside
Ringwood * Hampshire BH24 3JG
Telephone: (01423) 447107
Fax: (01423) 442101
E-mail: design@planningissues.co.uk

Client

Churchill Retirement Living

Project Title

Retirement Living Apartments
Edwina Mountbatten House
Romsey
SO51 8GH

Drawing Title

PROPOSED OTHER ELEVATIONS
PLANNING APPLICATION

Scale 1:100 @ A1 Date JUNE 2023

Drawn KLS Checked RJ

Drawing No. 10123RS - PA10 Rev. B