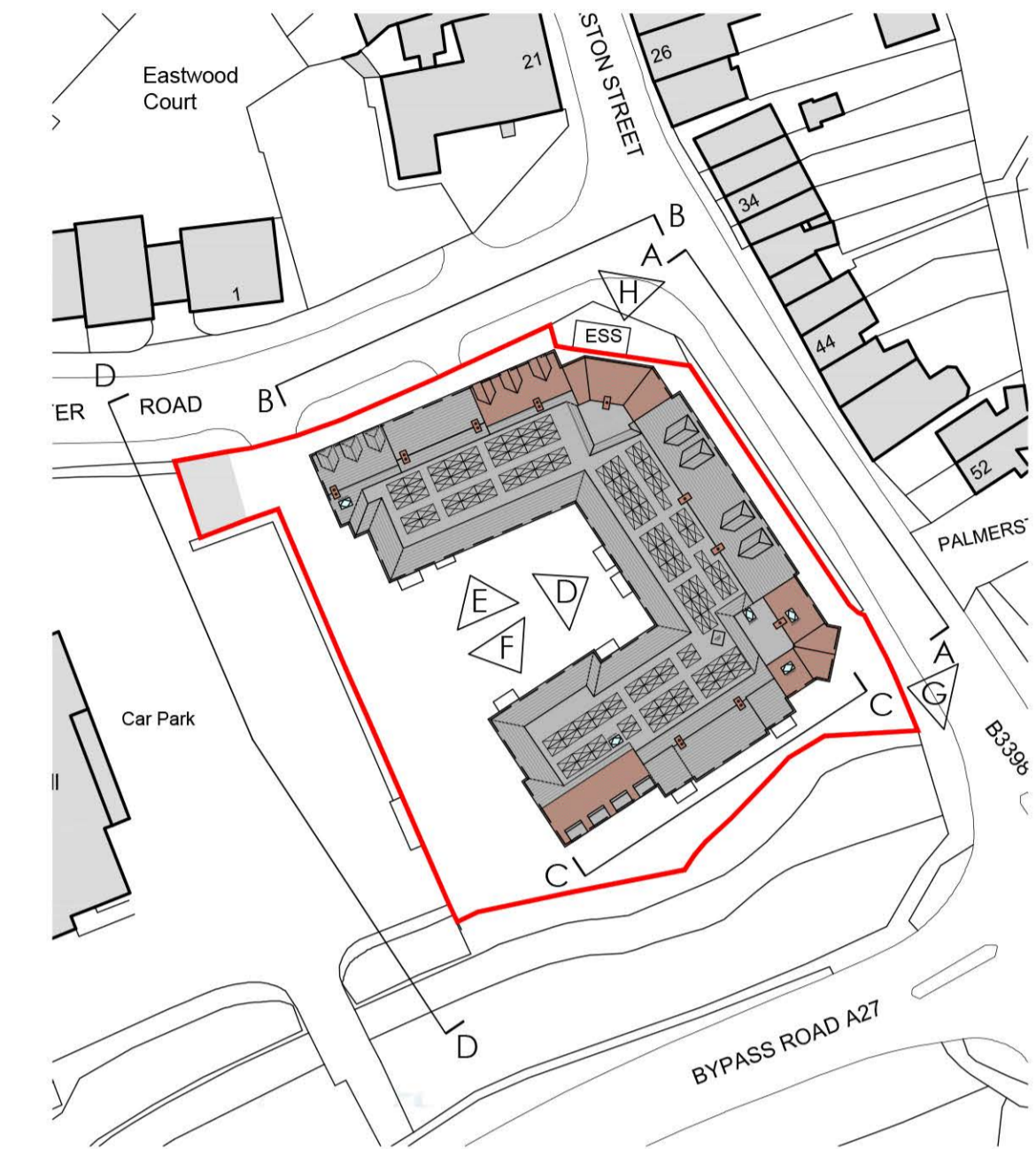


REVISIONS

Rev.	Date	By
A	Aug '23	KLS
General minor amendments. Dormers changed from flat to pitched. Brick ribbon added. Front doors added to flats 5, 6, & 7. Roof over flat 40 lowered. Chimney positions amended. Arched heads and stone cills added.		
B	Nov '23	KLS
General minor amendments. Dormers aligned with windows below. Brick ribbon partly removed. Front doors added to flats 5, 6, & 7. Roof over Guest Suite lowered. Chimney positions amended. Stone heads and cills omitted.		



Palmerston Street Contextual Elevation

Key to Elevations

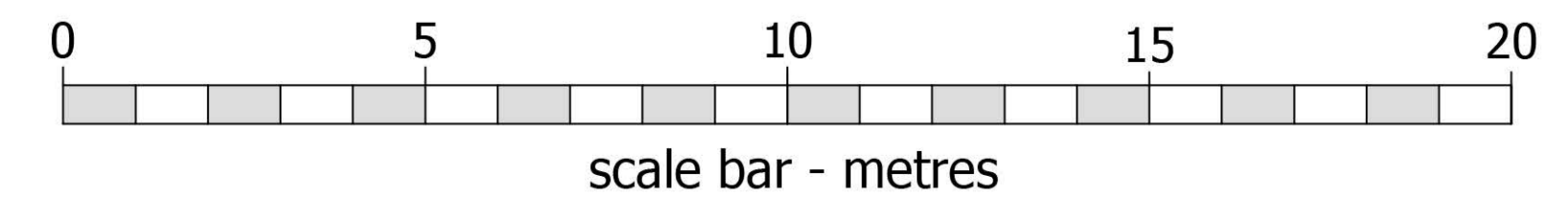


- 1 Prefabricated chimney
- 2 Natural slate roof tiles
- 3 Red clay roof tiles
- 4 Dormer windows
- 5 Black uPVC gutters and fascia
- 6 Red facing brick
- 7 Matching brick window heads & cills
- 8 Painted heads & cills
- 9 White-painted brickwork
- 10 Projecting GRP canopies over flat doors
- 11 Tax window
- 12 White uPVC casement windows
- 13 Painted metal balustrades
- 14 Feature cast stone entrance portico
- 15 Red clay tile hanging
- 16 Feature brick ribbon

← palmerston street elevation →

← broadwater road →

Elevation A-A to Palmerston Street



©CHURCHILL RETIREMENT LIVING

planning **issues**
TOWN PLANNING AND ARCHITECTURAL DESIGN
Rob Jackson RIBA
Churchill House • Parkside
Ringwood • Hampshire BH24 3JG
Telephone: 01423 462109
Fax: 01423 462101
E-mail: design@planningissues.co.uk

Client
Churchill Retirement Living

Project Title
Retirement Living Apartments
Edwina Mountbatten House
Romsey
SO51 8GH

Drawing Title
PROPOSED PALMERSTON STREET ELEVATION
PLANNING APPLICATION

Scale 1:100 @ A1 Date JUNE 2023
Drawn KLS Checked RJ
Drawing No. Rev.
10123RS - PA06 B