

Awbridge Parish Profile



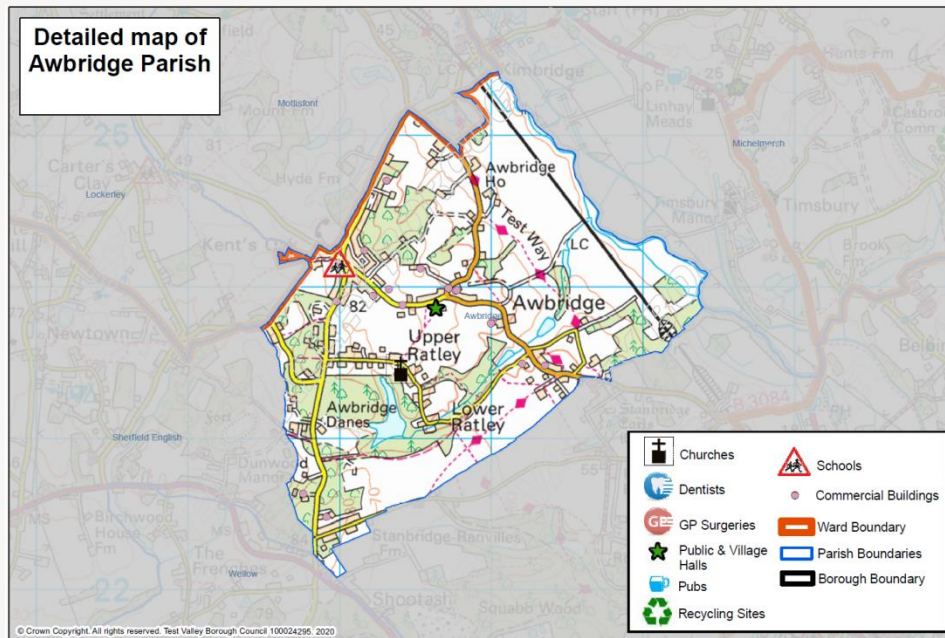
2024



Awbridge Parish Profile

This profile provides a summary of the latest available information on the demographic make-up of the parish of Awbridge within Test Valley. It looks at information on topics such as the population structure, economic, housing, health and educational information for the parish.

Awbridge is one of the Test Valley's fifty-nine parishes. It has an area of **482.70** hectares which represents **0.77%** of the total area of Test Valley; in terms of size, **Awbridge** is Test Valley's **forty-eighth largest** parish. The parish's population is **767** and its population density is **1.58** people per hectare, which is lower than the borough's average population density of **2.10** people per hectare.



Census Data

Some of the data used in this profile is taken from the 2011 Census; where this is the case, this is clearly labelled. Though this data is from several years ago, the breadth and volume of information the Census collects means it remains a valuable source of data and a reasonable indication of current trends.

Elected Representatives

Hampshire County Councillor

Councillor Nick Adams-King

Division: Romsey Rural

Email: nick.adams-king@hants.gov.uk

Telephone: 07771 727402

Test Valley Borough Councillors

Councillor Nick Adams-King

Ward: Blackwater

Email: cllrnadams-king@testvalley.gov.uk

Telephone: 01794 516341



Councillor Gordon Bailey MBE

Ward: Blackwater

Email: cllrdbailey@testvalley.gov.uk

Telephone: 01794 323557



Awbridge Parish Council

Chairman: **Councillor Grahame Jackson**

Email: gjackson@awbridgepc.org.uk

Clerk: **Ian Milsom**

Email: clerk@awbridgepc.org.uk

Telephone: 07745 411274

Population

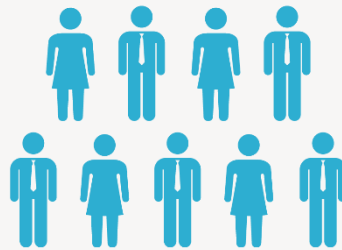


767

Population 2020



3.9%
increase



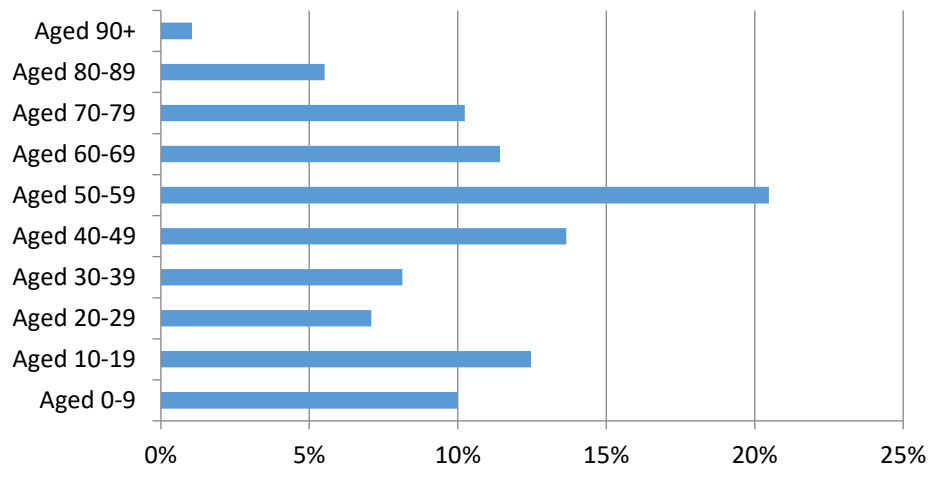
797

Estimated population
in 2027



0.58% of Test Valley's population

Percentage of the population by age group 2020



Age breakdown

At 22.6%, Awbridge has a similar percentage of **young people** (aged 0-19) than the borough average of 22.8%. By 2027, the proportion of young people will decrease slightly to 21.7%, and will then be 1.3% lower than the borough average.

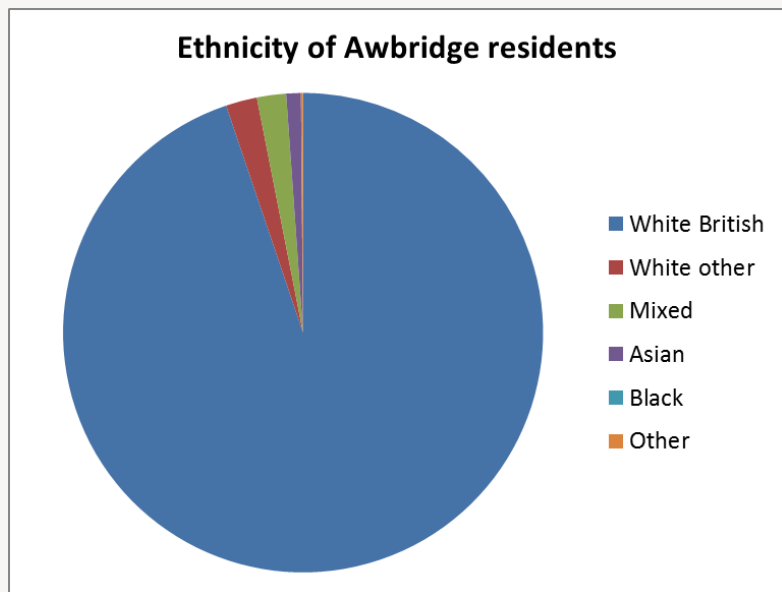
At 15.1%, Awbridge has a smaller percentage of **young adults** (aged 20-39) than the borough average of 19.9%. The proportion of young adults living in the parish is expected to increase by 0.3% between 2020 and 2027, compared to a fall of 1.2% across the borough.

Middle aged residents (aged 40-69) constitute 45.5% of Awbridge's population, which is higher than the borough average of 40.2%. This is forecast to increase to 46.5% by 2027, 6.9% above the borough average. At 16.8%, Awbridge has a slightly smaller percentage of those **aged 70 and over**, 0.4% below the borough average. By 2027 this percentage is forecast to decrease by 0.5%, in contrast to the forecast increase for the borough as a whole of 1.5%.

Population Data

This population data is taken from the Small Area Population Forecasts (SAPF), provided by Hampshire County Council. Further information on this is available online at: <https://www.hants.gov.uk/landplanningandenvironment/facts-figures/population/estimates-forecasts>.

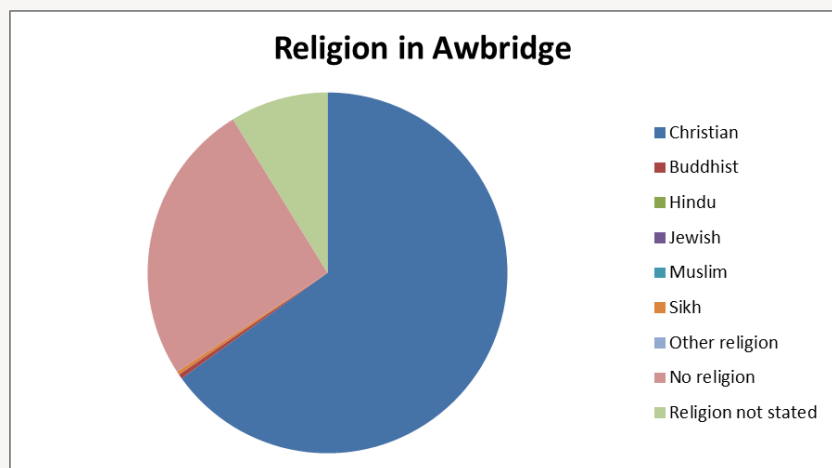
Ethnicity



White British	White other	Mixed/multiple ethnic groups	Asian	Black	Other
94.8%	2.1%	2.0%	1.0%	0.0%	0.1%

The graph shows the ethnic groups within Awbridge by percentage. In the 2011 Census, 94.8% of Awbridge's population identified as White British. This is slightly above the borough average of 93.1%. Awbridge's level of ethnic diversity is also lower than England as a whole, where only 79.8% of the population are White British.

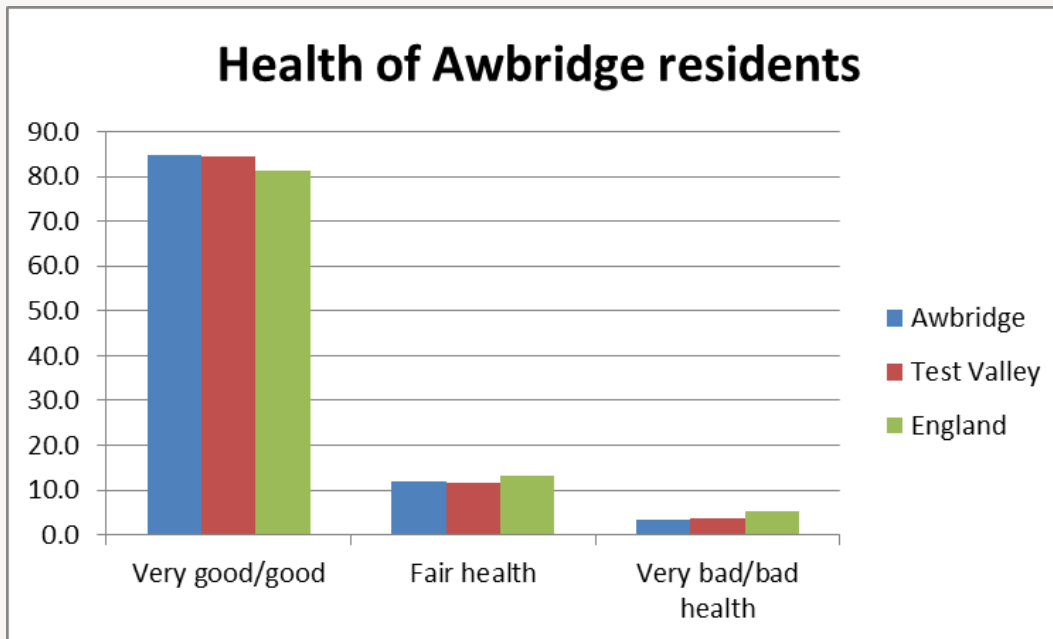
Religion



Christian	Buddhist	Hindu	Jewish	Muslim	Sikh	Other religion	No religion	Religion not stated
65.0%	0.4%	0.0%	0.0%	0.0%	0.3%	0.0%	25.4%	8.8%

At the 2011 Census, the majority of Awbridge residents (65.0%) classify themselves as Christian, which is slightly lower than the borough average of 65.7% but higher than the English average of 59.8%. The next largest group are those that say they have no religion (25.4%), which is slightly higher than both the Test Valley average (25.1%) but lower than the English average (27.7%). Of those groups that do adhere to a religion, Buddhism is the second largest group at 0.4%, this is 0.1% lower than the equivalent figure for England.

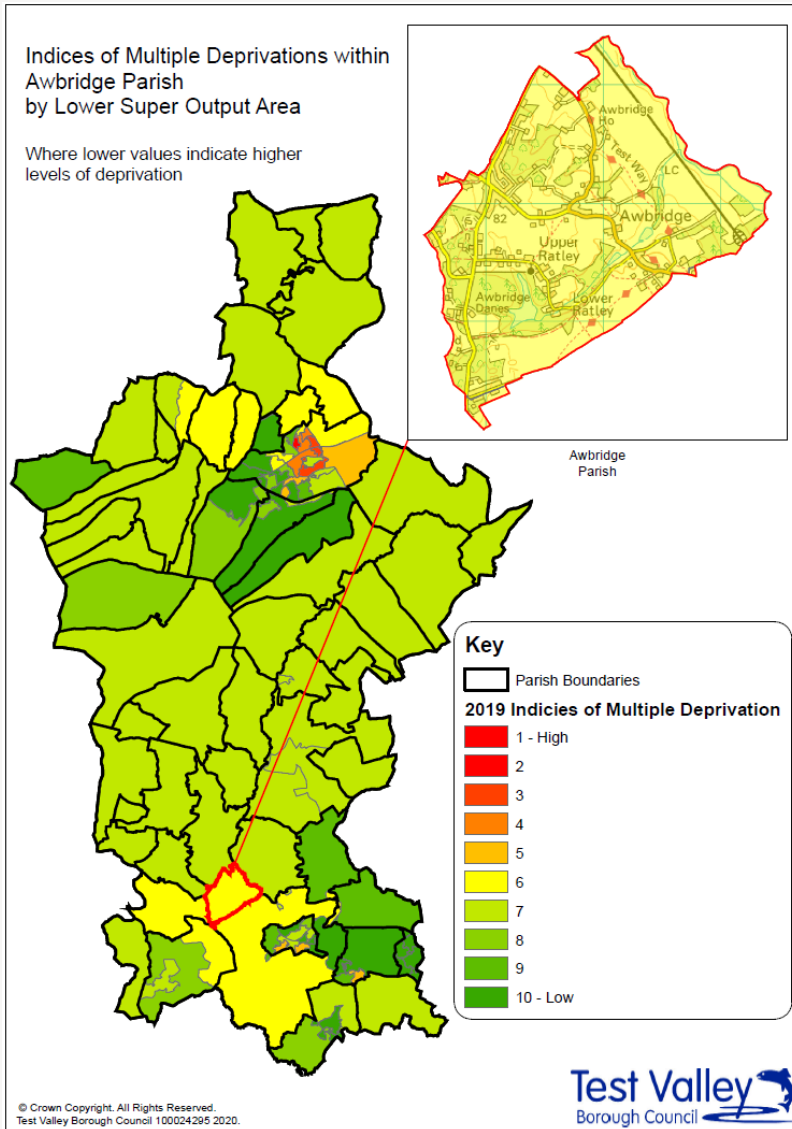
Health



At the 2011 Census, 84.7% of residents in Awbridge said they felt that they were in very good or good health. This is slightly higher than the average for Test Valley (84.6%) as well as the average for England (81.4%). 3.4% of the population rated their health as bad or very bad, which is lower than both the borough (3.8%) and English averages (5.4%)

0.8% of Awbridge's residents are long term sick or disabled (2011 Census)

Deprivation



The English Index of Multiple Deprivation 2019 is designed to identify areas where communities lack resources and are in need. To do this, seven factors are considered, which are:

- income deprivation;
- employment deprivation;
- education, skills and training deprivation;
- health deprivation and disability;
- crime;
- barriers to housing and services;
- living environment deprivation.

Areas are scored on each of these factors, and ranked nationally from least deprived to most deprived.

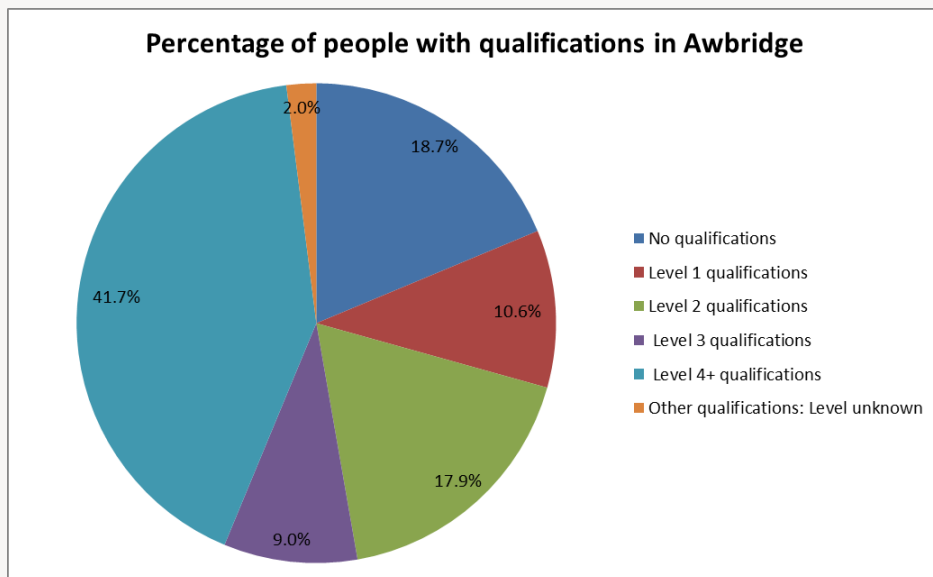
This map shows the deprivation scores for parish of Awbridge against all areas in Test Valley. Of 32,844 areas ranked across the country, Awbridge ranks 17,643rd, this puts it in the **50%** of **least deprived** areas in the country.

More specifically, Awbridge ranks in the top 10% of most deprived areas when it comes to physical proximity of local services. Awbridge is also in the top 10% of most deprived areas for the quality of housing available.

Further information about the Ministry of Housing, Communities and Local Government 2019 English Indices of Deprivation is available online at: <https://www.gov.uk/government/statistics/english-indices-of-deprivation-2019>

Education and employment

Qualifications

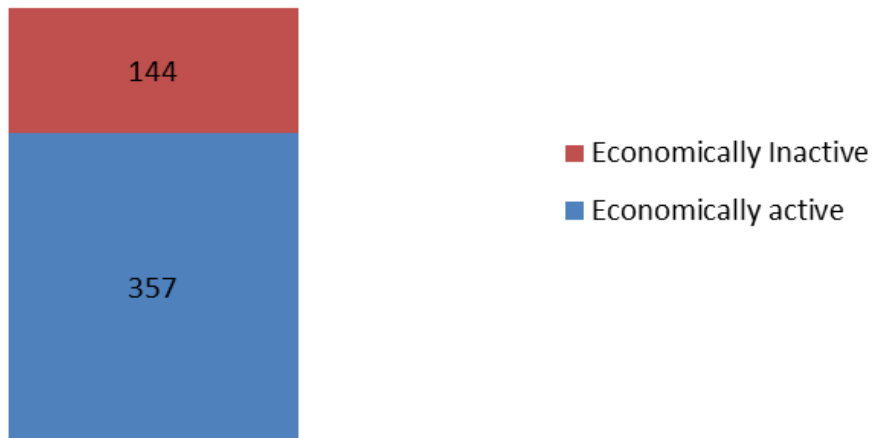


The pie chart shows the qualifications gained by Awbridge's residents aged 16-74 years, according to the 2011 Census. 79.2% of people living in Awbridge have at least one GCSE or equivalent qualification, a figure which is similar to the Test Valley average of 77.6%. Additionally, 2.0% of residents have an unknown qualification, which is similar to the borough average. This means that 18.7% of Awbridge residents between 16 and 74 have no academic, vocational or professional qualifications, which is 0.3% higher than the borough average. In addition, 41.7% of Awbridge residents have a level 4 qualification or above, which is equivalent to at least an undergraduate degree. This is significantly higher than the borough average of 30.5%.

No qualifications	No academic or professional qualifications.
Level 1	1+'O' level passes, 1+CSE/GCSE any grades, NVQ level 1, Basic/Essential skills, NVQ Level 1.
Level 2	5+'O' level passes, 5+GCSEs (grades A*-C) 1 A level/2-3 AS levels. City and Guilds Craft, Apprenticeship, NVQ level 2.
Level 3	2+'A' levels, Higher School certificate, NVQ level 3, City and Guilds Advanced Craft, BTEC National.
Level 4/5	Degree (for example BA, BSc) higher degree (for example Master's, PhD, PGCE), NVQ levels 4 and 5, Qualified Teacher status, Nurse or Accountancy. BTEC Higher level.
Other qualification	Level unknown, vocational/work-related Qualifications, Foreign qualifications.

Economic Activity

Economic activity (count)



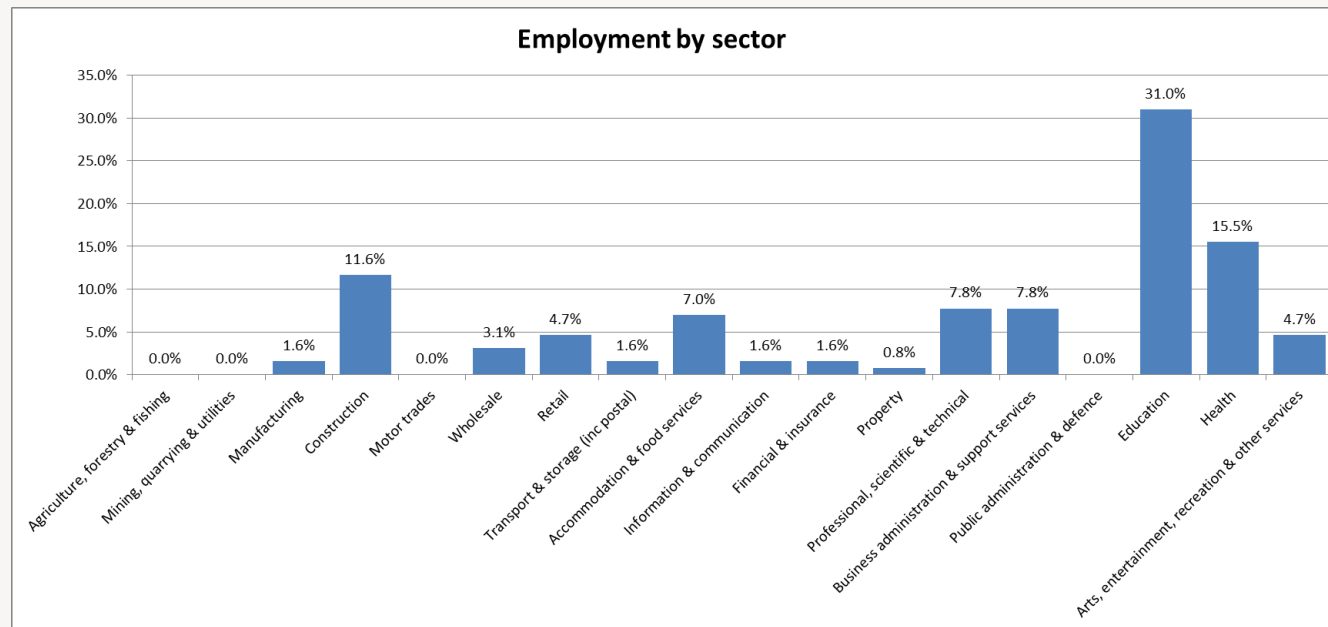
According to the 2011 Census, 71.3% of Awbridge's residents aged 16-74 are economically active, lower than Test Valley as a whole where the figure is 73.4% of residents. This includes people in full-, part- and self-employment, those who are actively seeking a job, and full-time students.

The remaining 28.7% of residents aged 16-74 are economically inactive, compared to 26.6% of Test Valley residents. This includes people who are retired, long-term sick or disabled, or who look after the home and family.

Employment by sector

Following the Local Government Boundary Commission for England (LGBCE) review in 2017, new Ward and Parish boundaries have been introduced in Test Valley. Hence, this information has been produced on a 'best fit' basis, it's not an exact representation of Awbridge but provides as good an indication as is currently feasible.

This data is taken from the 2018 UK Business Register and Employment Survey which is produced by the Office for National Statistics (ONS). This dataset relies upon a sample of 85,000 businesses across the country, from which these estimates are modelled. As such, there will be some sampling variability which result in the quality of the estimates deteriorating for smaller geographies.



This graph shows the percentage of the workforce by sector, according to the latest Business Register and Employment Survey in 2018. The largest sector employing people in Awbridge is Education (31.0%) followed by Health (15.5%) and Construction (11.6%).

Properties

Total number of properties

312

Dwellings

Estimated Average Value

4.8%
Terraced



£447,387

27.3%
Semi-Detached



£400,521

1.7%
Flat



£242,403

64.5%
Detached



£857,515

1.7%
Mobile

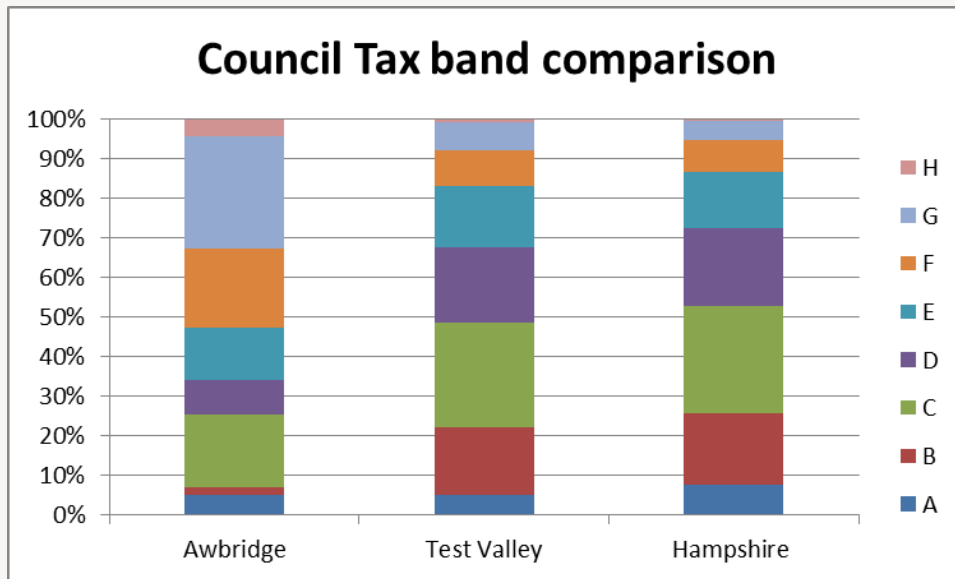





Figure not available

According to Zoopla estimates, the average value of a property in Awbridge in 2021 is **£762,404**. This is an increase of 12.75% over the past 5 years and makes Awbridge the thirteenth most expensive parish in Test Valley.

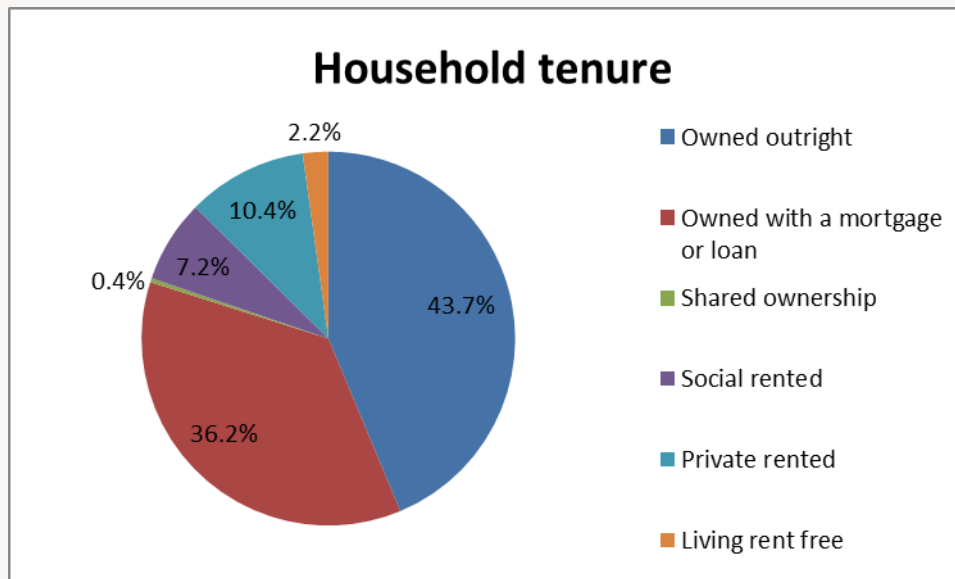
In Hampshire, the average value of a property is £381,137 (a 12% rise in 5 years) whilst in South East England, the average is £424,800 (an 11% rise in 5 years).

Council Tax Bandings



	Awbridge	Test Valley
Bands F-H 	51.9%	16.9%
Bands C-E 	40.1%	60.8%
Bands A-B 	8.0%	22.2%

Household Tenure



Household tenure refers to the financial arrangements under which people occupy their homes and is taken from the 2011 Census.

This pie chart depicts the tenure of households in Awbridge. 79.9% of people in Awbridge live in a property which they own outright or with a mortgage or loan. This is higher than both the average for Test Valley, which is 70.3%, and the average for the South East of England, which is 67.6%.

7.2% of residents rent their property from a Housing Association, which is significantly lower than the borough average of 14.4%.

10.4% of residents privately rent their property; this figure is slightly lower than borough average of 12.9%.

Community facilities

Within Awbridge there are a range of community facilities including a village hall, playing field, children's play facilities, and All Saints Church.

The parish has a primary school, Awbridge Primary School. The nearest GP surgeries are situated in Romsey. The nearest railway station is Mottisfont and Dunbridge.



Community plans

Details of any community planning exercises your parish is undertaking can be added here. Please get in touch with the Policy Team at the email address below and we will be more than happy to add information at your request.

Test Valley Borough Council – Policy Team

The information in this profile has been prepared by Test Valley Borough Council's Policy Team. If you have any further queries or would like to talk to us about other information you would like to see, then please contact the Policy Team who will be happy to help:

policyteam@testvalley.gov.uk