

Table 2: Historical Flooding - Southern Water

Source: Southern Water

Reference	Tile	Date of most recent incident	Post town	Locality	Street	Sewer Problem Description	Sewer Type Description	Internal Flooding	Curtilage Flooding	Highway or Open Space
SOW551	D	19990706	Andover	Andover	Anton Mill Road	Hydraulic	Foul/Combined		Yes	Yes
SOW552	C	20021014	Andover	Monxton	Chalkpit Lane	Hydraulic	Foul/Combined		Yes	
SOW553	D	19990127	Andover	Goodworth Clatford	Church Lane	Hydraulic	Foul/Combined			Yes
SOW554	A	20030416	Andover	Appleshaw	Cleaver Cottages	Hydraulic	Foul/Combined			Yes
SOW555	A	20030124	Andover	Ragged Appleshaw	Greensey	Hydraulic	Foul/Combined			Yes
SOW556	C	20021127	Andover	Anna Valley	Kings Mead	Hydraulic	Foul/Combined			Yes
SOW557	C	20060914	Andover		Mead Hedges	Hydraulic	Foul/Combined		Yes	
SOW558	B	20010212	Andover	Enham Alamein	Newbury Road	Hydraulic	Foul/Combined			Yes
SOW559	C	20001213	Andover	Kimpton	The Green	Hydraulic	Foul/Combined		Yes	Yes
SOW560	F	20001030	Eastleigh	Chandlers Ford	Alderwood Avenue	Hydraulic	Foul/Combined		Yes	
SOW561	F	19991224	Eastleigh	Chandlers Ford	Tweed Close	Hydraulic	Foul/Combined			Yes
SOW562	E	20021230	Romsey		Budds Lane	Hydraulic	Foul/Combined		Yes	Yes
SOW563	E	19991224	Romsey		Duttons Road	Hydraulic	Foul/Combined		Yes	Yes
SOW564	F	19991224	Romsey		Fair Field	Hydraulic	Foul/Combined		Yes	
SOW565	E	20001212	Romsey		Great Bridge Road	Hydraulic	Foul/Combined		Yes	
SOW566	F	19991224	Romsey	Romsey	Halterworth Lane	Hydraulic	Foul/Combined		Yes	Yes
SOW567	G	19991224	Romsey	West Wellow	Maurys Lane	Hydraulic	Foul/Combined		Yes	
SOW568	E	20010108	Romsey		Middlebridge Street	Hydraulic	Foul/Combined		Yes	
SOW569	E	20010126	Romsey	Timsbury	New Road	Hydraulic	Foul/Combined			Yes
SOW570	F	20040201	Romsey		Newlyn Walk	Hydraulic	Foul/Combined		Yes	Yes
SOW571	F	19980105	Romsey		Peel Close	Hydraulic	Foul/Combined		Yes	
SOW572	F	20050801	Romsey		Richmond Lane	Hydraulic	Surface Water			Yes
SOW573	E	20001106	Romsey		Riverside Gardens	Hydraulic	Foul/Combined		Yes	Yes
SOW574	F	20001009	Romsey		Senlac Road	Hydraulic	Surface Water		Yes	
SOW575	F	20021112	Romsey		Seward Rise	Hydraulic	Surface Water		Yes	
SOW576	F	19991224	Romsey		Smiths Field	Hydraulic	Foul/Combined			Yes
SOW577	E	20030117	Romsey	Timsbury	St. Andrews Close	Hydraulic	Foul/Combined		Yes	
SOW578	F	20061104	Romsey		St. Blaize Road	Hydraulic	Surface Water		Yes	
SOW579	F	20001107	Romsey	Romsey	Tadburn Road	Hydraulic	Foul/Combined			Yes
SOW580	F	20001205	Romsey		Viney Avenue	Hydraulic	Foul/Combined		Yes	
SOW581	F	20001030	Southampton	North Baddesley	Cedar Crescent	Hydraulic	Foul/Combined		Yes	
SOW582	F	20010126	Southampton	North Baddesley	Linden Walk	Hydraulic	Foul/Combined		Yes	Yes
SOW583	H	20040201	Southampton	North Baddesley	Middle Road	Hydraulic	Foul/Combined	Yes	Yes	Yes
SOW584	H	20050801	Southampton	Southampton	Test Lane	Hydraulic	Foul/Combined		Yes	
SOW585	H	20040201	Southampton	North Baddesley	Thomas Road	Hydraulic	Surface Water		Yes	
SOW586	F	20001105	Southampton	North Baddesley	Whitebeam Way	Hydraulic	Foul/Combined	Yes	Yes	
SOW587	F	20030116	Stockbridge	Kings Somborne	Romsey Road	Hydraulic	Foul/Combined		Yes	Yes
SOW588	F	20010227	Stockbridge	Kings Somborne	Winchester Road	Hydraulic	Foul/Combined			Yes
SOW589	C	20030106	Tidworth	Shipton Bellinger	Cosy Bungalows, Salisbury Road	Hydraulic	Foul/Combined		Yes	Yes

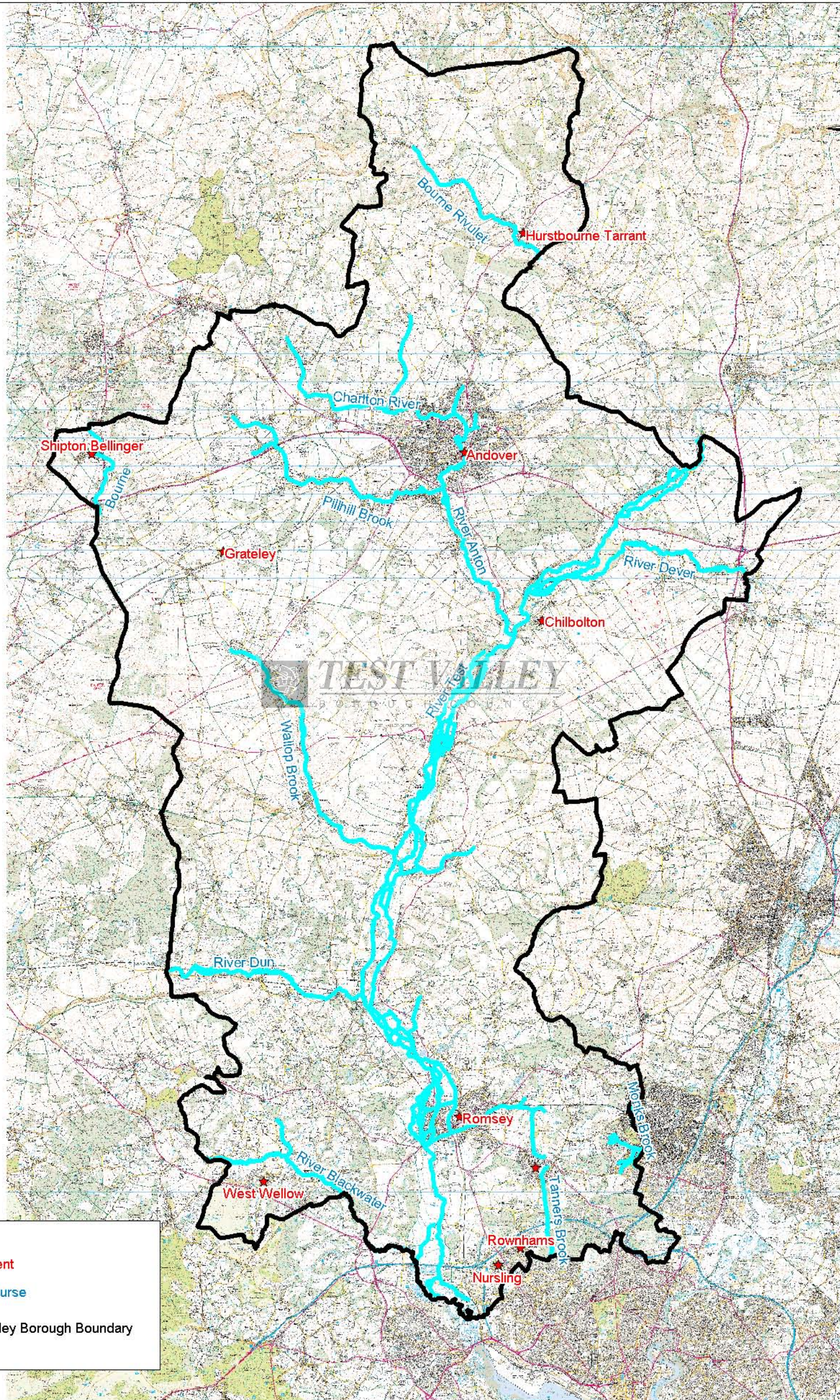
Note: This table is to be read in conjunction with Tiles A to H

Table 3: Localised Flooding Areas

Source: Test Valley Borough Council

Reference	Tile	Source Of Flooding	Occurrence of Flooding in Years	Source of Outline	Date Received
TV001	G	Land	8	Shapefile provided by council	12/01/2007
TV002	H	Surface (lack of drainage capability)	2	Shapefile provided by council	12/01/2007
TV003	H	Land (lack of capacity)	5	Shapefile provided by council	12/01/2007
TV004	H	Land (lack of capacity)	5	Shapefile provided by council	12/01/2007
TV005	F	Fluvial	5	Shapefile provided by council	12/01/2007
TV006	F	Fluvial	5	Shapefile provided by council	12/01/2007
TV007	F	Fluvial (flash floods) surface	10	Shapefile provided by council	12/01/2007
TV008	E	Fluvial	10	Shapefile provided by council	12/01/2007
TV009	E	Fluvial	3	Shapefile provided by council	12/01/2007
TV010	E	Fluvial	8	Shapefile provided by council	12/01/2007
TV011	E	Land (blocked culvert through	2	Shapefile provided by council	12/01/2007
TV012	F	Surface (lack of road drainage	8	Shapefile provided by council	12/01/2007
TV013	E	Ground	10	Shapefile provided by council	12/01/2007
TV014	E	Ground	10 to 15	Shapefile provided by council	12/01/2007
TV015	C	Ground	10	Shapefile provided by council	12/01/2007
TV016	F	Ground	5 to 10	Shapefile provided by council	12/01/2007
TV017	F	Ground	5 to 10	Shapefile provided by council	12/01/2007
TV018	C	Ground	10	Shapefile provided by council	12/01/2007
TV019	D	Ground	10	Shapefile provided by council	12/01/2007
TV020	D	Fluvial and surface water	10	Shapefile provided by council	12/01/2007
TV021	D	Fluvial and surface water	10	Shapefile provided by council	12/01/2007
TV022	B	Ground	5	Shapefile provided by council	12/01/2007
TV023	C	Ground	5	Shapefile provided by council	12/01/2007
TV024	C	Ground	5	Shapefile provided by council	12/01/2007
TV025	C	Ground	5	Shapefile provided by council	12/01/2007
TV026	C	Fluvial	15	Shapefile provided by council	12/01/2007
TV027	A	Ground	5	Shapefile provided by council	12/01/2007
TV028	A	Ground	5	Shapefile provided by council	12/01/2007
TV029	A	Ground	5	Shapefile provided by council	12/01/2007
TV030	C	Surface	20	Shapefile provided by council	12/01/2007
TV031	A	Ground	5	Shapefile provided by council	12/01/2007
TV032	C	Ground	5 years	Shapefile provided by council	12/01/2007
TV033	A	Ground	5	Shapefile provided by council	12/01/2007
TV034	A	Ground	5	Shapefile provided by council	12/01/2007
TV035	B	Ground	5	Shapefile provided by council	12/01/2007
TV036	A	Ground	5	Shapefile provided by council	12/01/2007
TV037	A	Ground	5	Shapefile provided by council	12/01/2007
TV038	E	Fluvial	8	Shapefile provided by council	12/01/2007
TV039	E	Fluvial	3	Shapefile provided by council	12/01/2007
TV040	E	Fluvial	5	Shapefile provided by council	12/01/2007
TV041	C	Ground	5	Shapefile provided by council	12/01/2007

Note: This table is to be read in conjunction with Tiles A to H



Legend

- ★ Settlement
- Watercourse
- Test Valley Borough Boundary

This map is reproduced from Ordnance Survey material with the permission of Ordnance Survey on behalf of the Controller of Her Majesty's Stationery Office © Crown copyright. Unauthorised reproduction infringes Crown copyright and may lead to prosecution or civil proceedings. Test Valley Borough Council Licence No. 100024295 2007.

Strategic Flood Risk Assessment for Local Development Framework

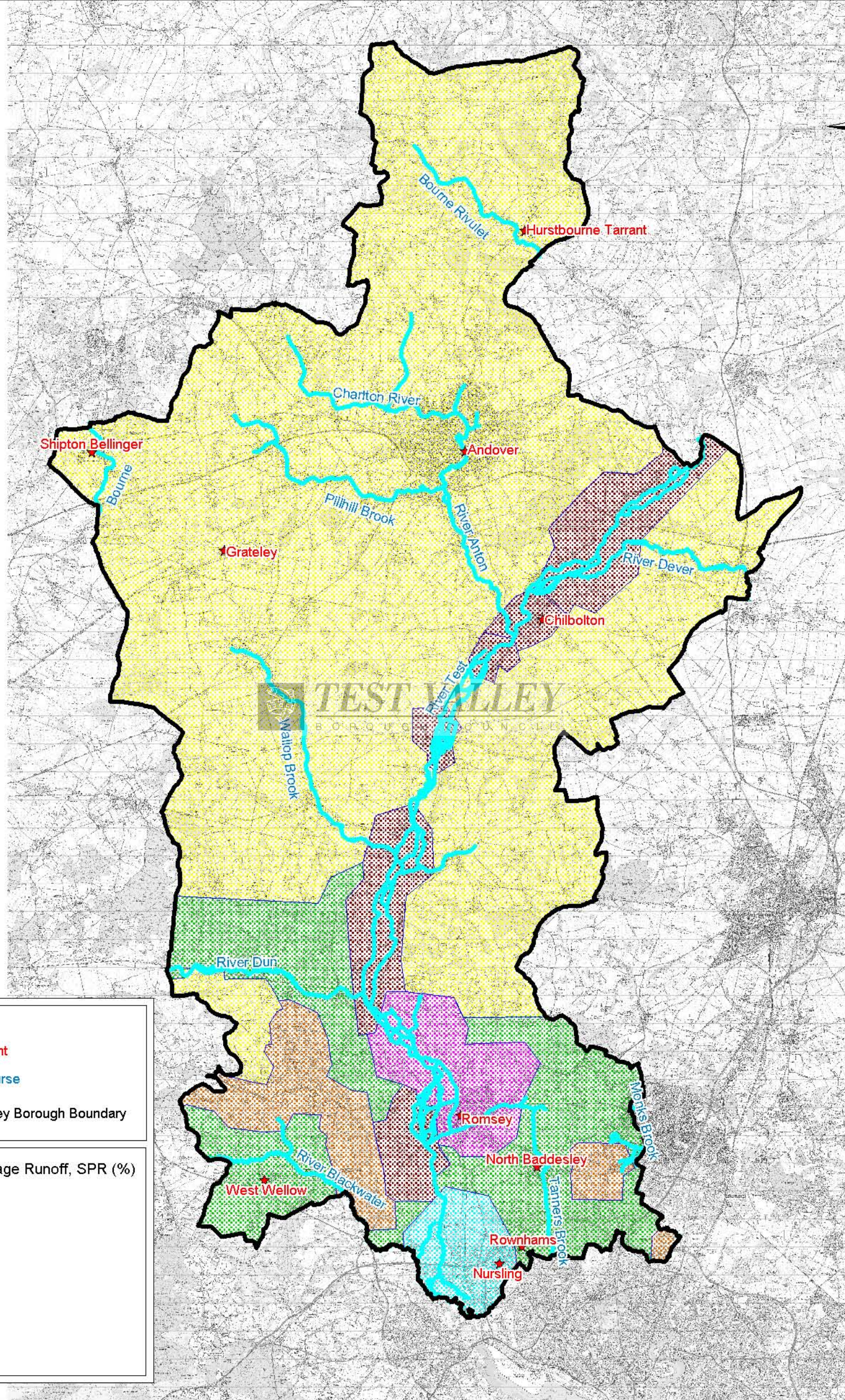
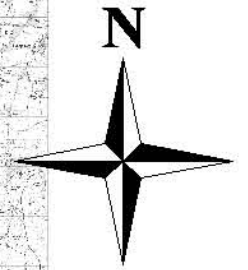


Figure 1: Study Area

DRAWN BY	APPROVED BY	SCALES @A3
ARBS	BV	NTS

Test Valley Borough Council
 Beech Hurst
 Weyhill Road
 Andover
 Hampshire SP10 3AJ

Halcrow Group Ltd
 Griffin House, 135 High Street
 Crawley
 West Sussex
 RH10 1DQ



Legend

- ★ Settlement
- Watercourse
- ▭ Test Valley Borough Boundary

Standard Percentage Runoff, SPR (%)

	2.0
	49.6
	25.3
	14.5
	29.2
	14.5

This map is reproduced from Ordnance Survey material with the permission of Ordnance Survey on behalf of the Controller of Her Majesty's Stationery Office © Crown copyright. Unauthorised reproduction infringes Crown copyright and may lead to prosecution or civil proceedings. Test Valley Borough Council Licence No. 100024295 2007.