

Test Valley Borough Council

Picket Twenty Resident Newsletter



Dear Residents,

this bi-monthly newsletter is to provide information about the development, activities and events to residents at Picket Twenty.

This will be my last newsletter for residents at Picket Twenty as there will shortly be a new Community Development Worker for the area. The new worker will be in touch to introduce themselves in due course, but in the meantime please feel free to contact me.

May I take this opportunity to wish you all the best at Picket Twenty.

Kind regards

Sharon
sgoodridge@testvalley.gov.uk
01264 368622



Housing Occupations

Latest figures obtained from the developers' sales offices showed that over 220 homes, of the overall 1200 homes planned, are now occupied at Picket Twenty.

Reminders.....

Driving around the neighbourhood.

Residents and contractors are asked to please drive carefully around the development as children may be playing near the roadside.

Parking

Please be considerate to your neighbours when parking your vehicle at Picket Twenty. Every household has allocated parking spaces and residents should use these to park their vehicles.

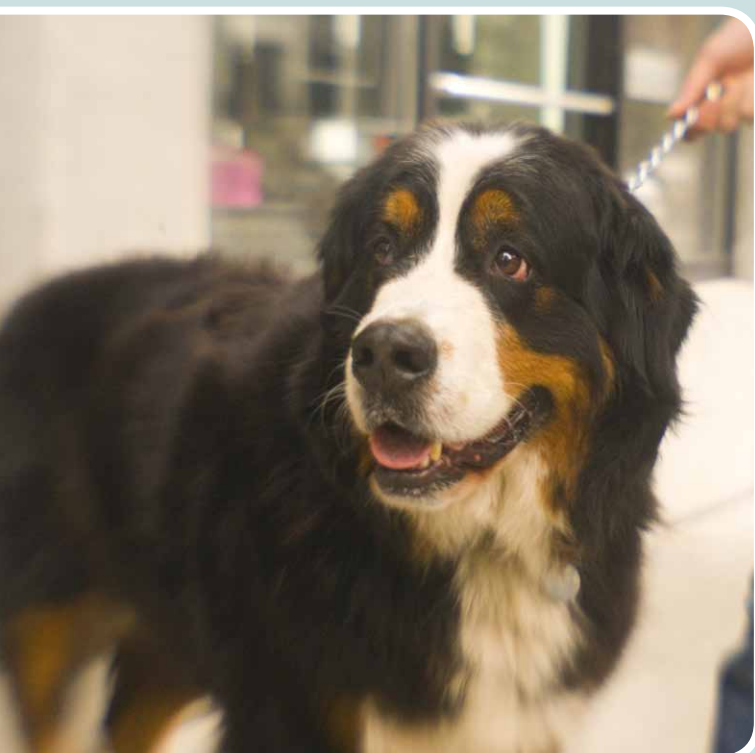
Cars parked on roads and pavements make it difficult for pedestrians to walk safely and can be dangerous especially for children. Buses and emergency vehicles such as fire engines could also find it difficult to access some roads/ houses, where residents have parked inconsiderately.

Parked vehicles which are causing an obstruction at road junctions should be reported to the police using the 101 number.

A plea to all dog owners.....

Please help keep the Picket Twenty neighbourhood clean by clearing up after your dog - thank you.

Both the black bin on Picket Twenty Way and the red dog bin in the footpath off Boulter Road are suitable for dog owners to dispose of bagged dog mess in.



It is actually an offence if you do not clear up after your dog and owners may receive a Fixed Penalty Notice of £80. Authorised council officers patrol throughout the borough including your neighbourhood.

If you know of an area that suffers from dog fouling or you have seen a person not clearing up after their dog, call Test Valley Borough Council on:

01264 368000.

Community Information

Community Centre

The temporary facility is next to the Persimmon site office, at the end of Picket Twenty Way. It is used as a venue for information about the development, local facilities, services and community activities in and around Andover. A permanent community centre at Picket Twenty will be provided by the developers once 400 homes are occupied.



Community Coffee Group

Pop into the community centre for a cuppa' on Thursday afternoon's, throughout March, 1.30 – 3pm. This is a great opportunity to find out more about the development and to meet your neighbours (accompanied children welcome).

Community Litter Pick

As local residents, please spare an hour of your time to help keep the development and parkland litter free. Meet Sharon at the Community Centre, Picket Twenty Way on Saturday 16 March at 10.30am. Litter 'grabbers', rubber gloves and rubbish bags will be provided.



Family Fun Day

We are planning a Family Fun Day for local residents in June at the temporary community centre.



Neighbourhood Watch (NW)

A meeting to discuss the Neighbourhood Watch scheme at Picket Twenty was held in January. Information about NW and crime prevention was discussed, residents volunteered to become co-ordinators for NW schemes and as a result schemes are currently being set up at Picket Twenty Way, Quicksilver Way, Boulter Road and Boulter Crescent.

NW signs have been put up around the development to promote NW in the area. Thank you to Persimmon developers for providing these signs.

If you would like to get further involved or find out more information regarding any of these community events, please contact Sharon.



Welcome to
St. Mary's
Andover

Hello and Welcome!

As you will have read in Update 5 of the Resident Newsletter, the Picket Twenty development is situated within the parish of St. Mary's, and I write to extend a very warm welcome to you all as you settle into your new home.

St. Mary's Andover is a visionary, growing and relevant community of Christians from all walks of life with a reputation for being friendly and welcoming. Whatever your age or background, or whether you've had a lot or almost no involvement before with church, St. Mary's simply offers you the opportunity to become a part of a local community that enjoys life!

We have different styles of services each Sunday, from traditional at 9am to modern and lively at 10.30am, and there are many groups designed by all of us to meet our needs and expectations for a fulfilling life.

These include mid week activities for parents and pre-school age children, groups for men and women, social groupings, outreach programmes for practical help to others in the parish communities, opportunities for Christian meditation and contemplation and much, much more.

*To find out more visit our website **www.stmarys-andover.org.uk** or look for the information leaflets available at the temporary Community Centre, next to the Persimmon site office at the end of Picket Twenty Way. Or just come along and see for yourself, you will be assured of a warm welcome!*

John

Reverend Canon John Harkin

Vicar Andover St. Mary

Area Dean Andover Deanery

Pilgrims' Cross CE Aided Primary School



Picket Twenty Way, SP11 6TY

Opening September 2013



Admissions - September 2013

The Governing Body have determined that the school will open to children in Years R, 1 and 2 in September 2013. Details of how to apply for a place are given below. However, we are also keen to hear if you have a child or children of pre-school or key stage 2 (Years 3,4,5 or 6) age. We would therefore be grateful if you could email us at pilgrimscrossprimary@gmail.com. Thank you for your time and interest.

Cutting edge facilities

- Large, light and airy classrooms, with flexible learning spaces
- A spacious hall, music and drama facility, food technology/art room and discovery suite
- Field, playground, orchard, internal courtyard & the latest technologies

www.pilgrimscross.hants.sch.uk/3673-index.htm



How to apply for a place in Year R, 1 or 2:

By telephone or email:

0845 603 5623

admissions.team@hants.gov.uk

Online:

<http://www3.hants.gov.uk/education/admissions/ad-applyonline.htm>

By post or in person:

County Admissions Team
Children's Services
Department
The Castle, Winchester
Hampshire, SO23 8UG

Welcome from the Head Teacher

Hello!

My name is Amanda Johnston and I have the incredible honour of becoming your Headteacher at Pilgrims' Cross Primary School, from Easter 2013.

I am currently the Headteacher at Brighstone CE Aided Primary School on the Isle of Wight and am greatly looking forward to moving to the area and working with you to facilitate the growth of what I know, will become a wonderful learning community.

I plan to update you on the school's progress again at Easter and look forward to meeting many of you over the coming months. In the meantime, I hope that you continue to enjoy watching the school grow from your upstairs windows!

Best wishes,
Miss Johnston



Reporting Crimes & Incidents

Residents are encouraged to report any incidents of Anti Social Behaviour or other non emergency incidents using the 101, non emergency, telephone number.

For any community safety matters residents can contact TVBC Community Wardens at wardens@testvalley.gov.uk

Crime Stoppers 0800 555 111

Disposing of rubbish

There is a mixed glass recycling bin situated outside the temporary community centre for residents to use.

Refuse collection day at Picket Twenty is on a Thursday.

Following the collection of kerbside rubbish from Picket

Twenty properties, TVBC request that all bins are taken back onto your property as soon as possible so the development is kept looking tidy.

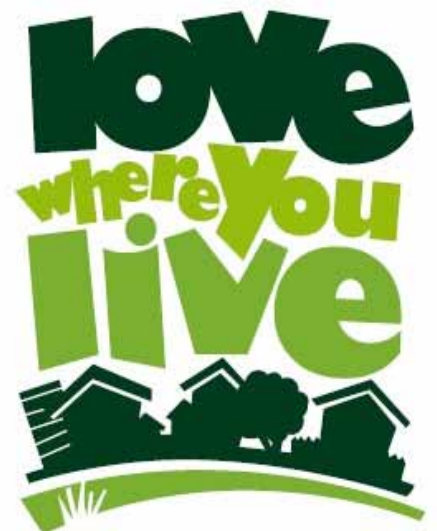
For information on waste and recycling visit www.testvalley.gov.uk



A free 'Green Guide to Recycling' booklet is available by contacting Sharon. This contains information on recycling.

If you would like to report any litter or environmental issues please text 'love' to 60060 explaining what you've seen and where, call 01264 368000 or email environmentalservice@testvalley.gov.uk.

Information available online at www.testvalley.gov.uk/love





London Road Underpass

We have been advised that once a safety audit has been carried out, the underpass should be open for buses to use. This will reduce the time it takes for buses to reach the town centre.

Local school students travelling to Test Valley School, Stockbridge

Clegg + Brooking operate a school bus from Andover to Test Valley School in Stockbridge. Presently children from Picket Twenty catch the bus from the Fire Station London Road or Golf Course Winchester Road. Clegg + Brooking would like to hear from parents of children who have a place at Test Valley School starting September 2013 and who are interested in having a school bus service from Picket Twenty.

Contact Clegg + Brooking Coaches **01264 781 679** / schoolrun@cbcoaches.co.uk

Andover Bus Station

Andover Bus Station is shortly to be extended and refurbished to cope with Andover's expanding population. Funding will come from developers whose new homes have increased the demand on the Bus Station. Facilities will include additional space for buses and coaches, an enclosed waiting and internal seating area, a bus enquiry office, café, shopmobility facility and electronic passenger information system.

Subsidised bus passes

Following the commencement of the new P20 bus service connecting the development with the town centre, subsidised 'Andover Area Mega Rider' bus passes are available for residents at Picket Twenty, funded by the developer. Contact Sharon for an application form and details about the scheme.

The P20, hourly, service links Picket Twenty, Admirals Way, Vigo Road, Andover town centre, Weyhill Road, Andover Rail Station and Tesco Extra.

Two drivers and an extra low-floor single deck bus are used to provide the new service. Information from stagecoachbus.com/south or Traveline on **08457 484950**

Car Sharing

Drivers in Hampshire are being encouraged to save money and beat the recent rise in fuel prices by sharing their journeys rather than driving alone. To join Hants Car Share for free, just go to www.hantscarshare.com, register your journey and start searching for someone going your way today!

Health Walks

All residents are welcome for an hour long walk, lead by a Health Walk Leader, to help fitness and meet new people on Tuesday 12 March.

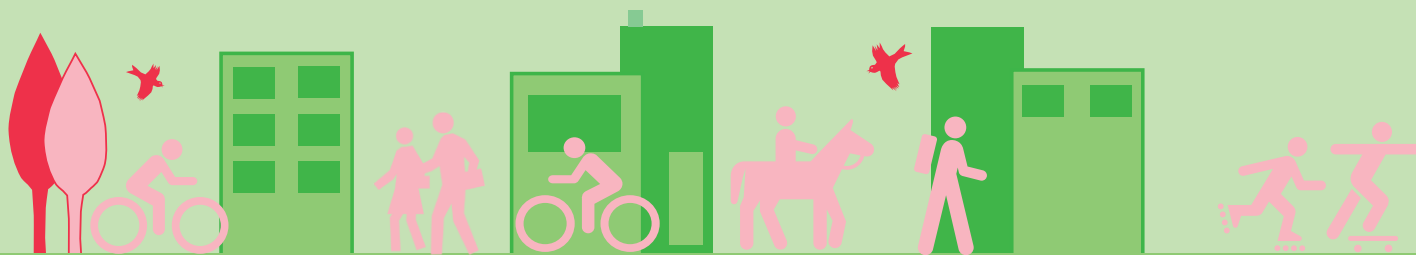
We will leave from outside the Temporary Community Centre on Picket Twenty Way, at 10am. Please wear suitable footwear and bring a waterproof coat (if necessary) and a drink.

For details please contact Sharon.

Cycle Ride

We would like to offer group cycle rides at Picket Twenty. These cycle rides would be to keep fit and an opportunity to meet other local people. The routes could be as long or short as people wanted. If you are interested in cycling with other residents of Picket Twenty please contact Sharon.

For any information regarding the Community Travel Plan or local routes, please contact Sharon Goodridge, Community Development Worker
01264 368622
sgoodridge@testvalley.gov.uk



Information for residents

Resident Newsletters

Residents are reminded that they can view the bi-monthly resident newsletters and access local information about the development, local activities and events on the Picket Twenty page of the Council's website by accessing: www.testvalley.gov.uk

Sharon can email or post you a newsletter on request or they can be collected from the Community Centre.

Contact us

Residents can contact the Planning Policy Team at planningpolicy@testvalley.gov.uk or call **01264 368000** with any planning queries regarding the New Neighbourhoods in Andover.